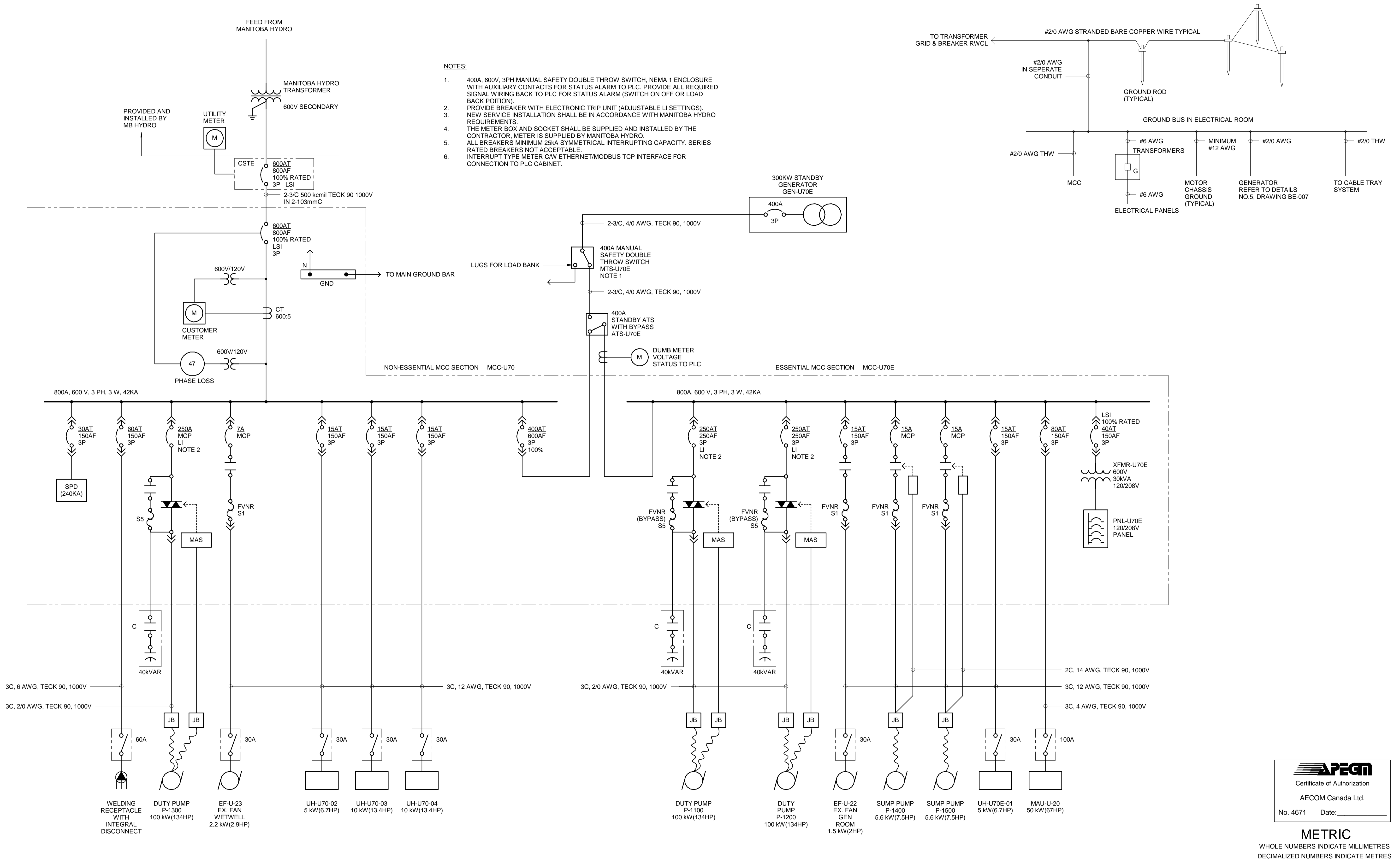


P:\60321148\900-CAD\900-CAD-09-SUPPORT\PROJECT_TITLE_BLOCKS\Title Block for Pump Station works\1633853-XTB-C1-CU.dwg



- NOTES:**
- 400A, 600V, 3PH MANUAL SAFETY DOUBLE THROW SWITCH, NEMA 1 ENCLOSURE WITH AUXILIARY CONTACTS FOR STATUS ALARM TO PLC. PROVIDE ALL REQUIRED SIGNAL WIRING BACK TO PLC FOR STATUS ALARM (SWITCH ON OFF OR LOAD BACK POSITION).
 - PROVIDE BREAKER WITH ELECTRONIC TRIP UNIT (ADJUSTABLE LI SETTINGS). NEW SERVICE INSTALLATION SHALL BE IN ACCORDANCE WITH MANITOBA HYDRO REQUIREMENTS.
 - THE METER BOX AND SOCKET SHALL BE SUPPLIED AND INSTALLED BY THE CONTRACTOR, METER IS SUPPLIED BY MANITOBA HYDRO.
 - ALL BREAKERS MINIMUM 25KA SYMMETRICAL INTERRUPTING CAPACITY. SERIES RATED BREAKERS NOT ACCEPTABLE.
 - INTERRUPT TYPE METER C/W ETHERNET/MODBUS TCP INTERFACE FOR CONNECTION TO PLC CABINET.



METRIC
WHOLE NUMBERS INDICATE MILLIMETRES
DECIMALIZED NUMBERS INDICATE METRES

UNDERGROUND STRUCTURES SUPV. U/G STRUCTURES DATE		B.M. ELEV.				ENGINEER'S SEAL PROVINCE OF MANITOBA R. BOGDANOV Member 33564 REGISTERED PROFESSIONAL ENGINEER				THE CITY OF WINNIPEG PUBLIC WORKS DEPARTMENT	
LOCATION OF UNDERGROUND STRUCTURES AS SHOWN ARE BASED ON THE BEST INFORMATION AVAILABLE. BUT NO GUARANTEE IS GIVEN THAT ALL EXISTING UTILITIES ARE SHOWN OR THAT THE GIVEN LOCATIONS ARE EXACT. CONFIRMATION OF EXISTENCE AND EXACT LOCATION OF ALL SERVICES MUST BE OBTAINED FROM THE INDIVIDUAL UTILITIES BEFORE PROCEEDING WITH CONSTRUCTION.		O ISSUED FOR TENDER 17/01/09 RC				DESIGNED BY RB CHECKED BY LCS		CONSULTANT PROJECT NUMBER 60321148		WAVERLEY STREET UNDERPASS AT CN MILE 3.89 RIVERS SUB CONTRACT 2: UNDERPASS STRUCTURE, RAILWORKS, ROADWORKS, LAND DRAINAGE SEWER, PUMPING STATION AND LANDSCAPING WORKS	
NO. REVISIONS DATE BY		HOR. SCALE AS SHOWN VERTICAL		DRAWN BY RC APPROVED BY SS		RELEASED FOR CONSTRUCTION		PUMPING STATION SCHEMATICS		SHEET 7 OF 8	
		DATE 06/01/2016 DATE 05/30/16						C2-BE-007		CONSULTANT DRAWING NUMBER	