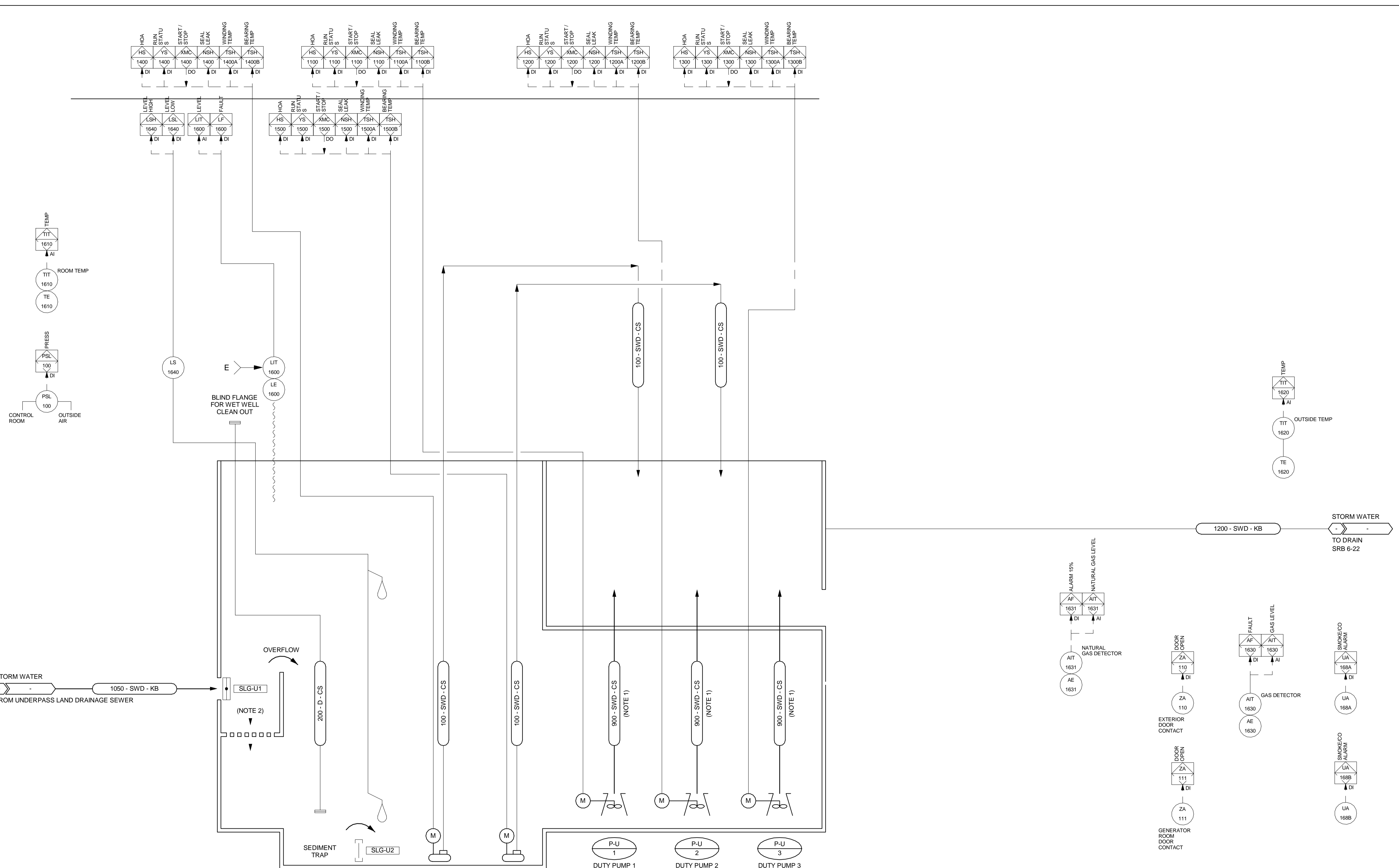


P:\60321148\900-CAD\900-CAD\900-CAD\PROJECT_TITLE_BLOCKS\Title Block for Pump Station works\163383-XTB-C1-CU.dwg



NOTE:

- 1. DRAFT TUBE DIAMETER MAY DIFFER DEPENDING ON PUMP MODEL.
- 2. MAIN FLOW THROUGH TRASH RACKS FOR COLLECTING LARGE DEBRIS. REFER TO STRUCTURAL DRAWINGS FOR DETAIL.
- 3. FOR PROCESS CONTROL NARRATIVE & CONTROL LOOP DRAWINGS SEE SPECIFICATIONS.
- 4. CONFIRM LOCATION OF FLOAT AND LEVEL TRANSMITTERS WITH CONTRACT ADMINISTRATOR PRIOR TO CONSTRUCTION.



UNDERGROUND STRUCTURES		B.M. ELEV.
SUPV. U/G STRUCTURES	DATE	
LOCATION OF UNDERGROUND STRUCTURES AS SHOWN ARE BASED ON THE BEST INFORMATION AVAILABLE BUT NO GUARANTEE IS GIVEN THAT ALL EXISTING UTILITIES ARE SHOWN OR THAT THE GIVEN LOCATIONS ARE EXACT. CONFIRMATION OF EXISTENCE AND EXACT LOCATION OF ALL SERVICES MUST BE OBTAINED FROM THE INDIVIDUAL UTILITIES BEFORE PROCEEDING WITH CONSTRUCTION.		

NO.	REVISIONS	DATE	BY



DESIGNED BY	JAT	CHECKED BY	MPG
DRAWN BY	DJP	APPROVED BY	AN
HOR. SCALE	AS SHOWN	RELEASED FOR CONSTRUCTION	
VERTICAL			

ENGINEER'S SEAL

PROVINCE OF MANITOBA
J.A. THOMPSON
Member
30632
REGISTERED PROFESSIONAL ENGINEER

CONSULTANT PROJECT NUMBER
60321148

THE CITY OF WINNIPEG
PUBLIC WORKS DEPARTMENT

Waverley Street Underpass at CN Mile 3.89 Rivers Sub
CONTRACT 2: UNDERPASS STRUCTURE, RAILWORKS,
ROADWORKS, LAND DRAINAGE SEWER, PUMPING STATION
AND LANDSCAPING WORKS

CITY DRAWING NUMBER
U-239-2016-C2-BP-004

SHEET 4 OF 5

CONSULTANT DRAWING NUMBER
C2-BP-004

METRIC
WHOLE NUMBERS INDICATE MILLIMETRES
DECIMALIZED NUMBERS INDICATE METRES