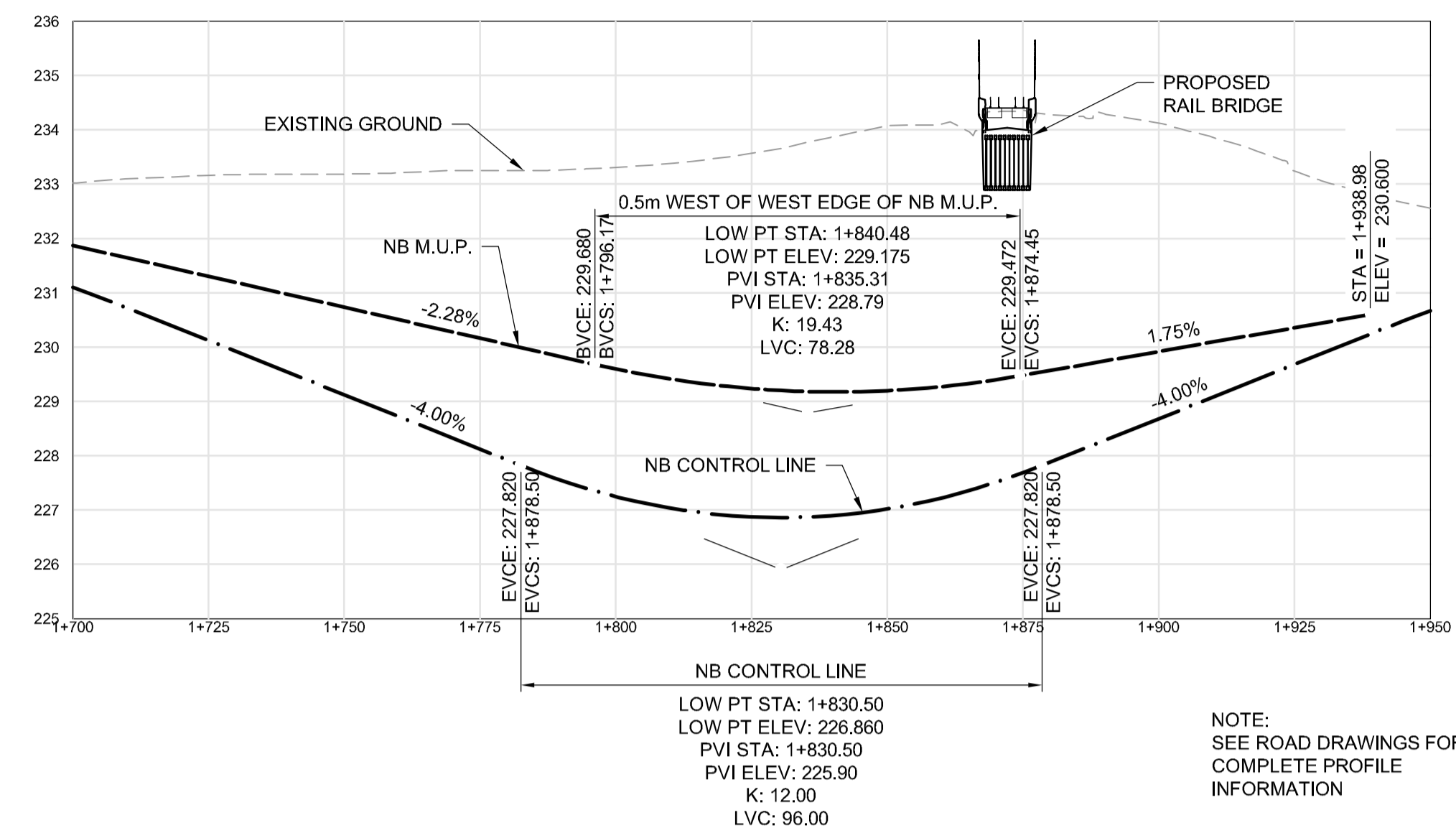


WAVERLEY - SOUTHBOUND ROAD AND M.U.P. PROFILES

SCALE H 1:1000
V 1:100

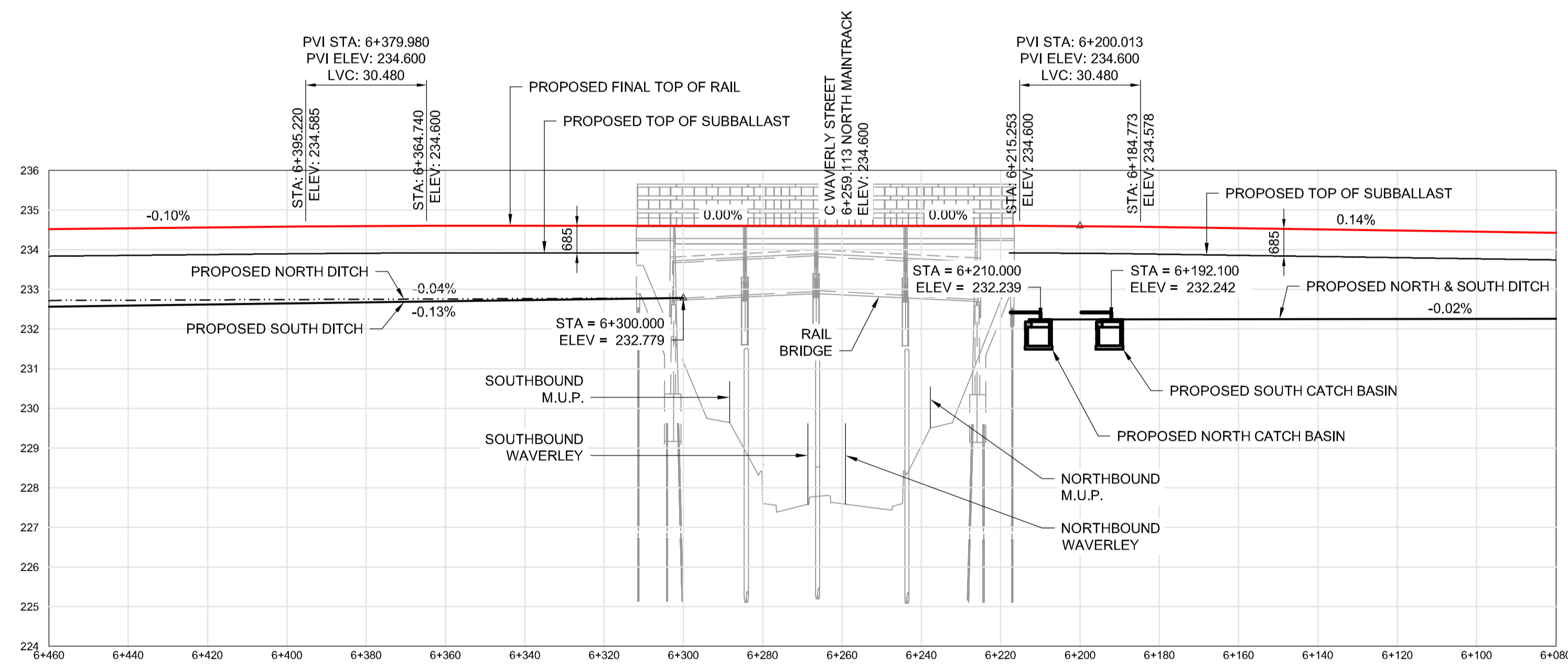
NOTE:
SEE ROAD DRAWINGS FOR
COMPLETE PROFILE
INFORMATION



WAVERLEY - NORTHBOUND ROAD AND M.U.P. PROFILES

SCALE H 1:1000
V 1:100

NOTE:
SEE ROAD DRAWINGS FOR
COMPLETE PROFILE
INFORMATION



RAILWAY PROFILE

SCALE H 1:1000
V 1:100

NOTE:
SEE ROAD DRAWINGS FOR
COMPLETE PROFILE
INFORMATION

G:\CAD\163353\Technical Workspace\Engineering\Drawings and Figures\Structures\Contract\163353-C2-CON-CS-SITE PLAN 2.dwg

NOTICE:
THE EXISTENCE, LOCATION AND ELEVATION OF UTILITIES AND/OR CONCEALED STRUCTURES AT THE PROJECT SITE ARE BASED ON THE BEST INFORMATION AVAILABLE AND ARE NOT GUARANTEED BY DILLON CONSULTING LIMITED. THE CONTRACTOR IS RESPONSIBLE FOR DETERMINING THE EXISTENCE, LOCATION AND ELEVATION OF ALL SUCH UTILITIES AND/OR CONCEALED STRUCTURES AND IS RESPONSIBLE FOR NOTIFYING THE APPROPRIATE COMPANY, DEPARTMENT OR PERSON(S) OF ITS INTENTION TO CARRY OUT HIS OPERATIONS.



DESIGNED BY	RE	CHECKED BY	SSR
DRAWN BY	CGC	APPROVED BY	DBW
HOR. SCALE	AS SHOWN	RELEASED FOR CONSTRUCTION	
VERTICAL SCALE	AS SHOWN		
NO.	REVISIONS	DATE	BY
0	ISSUED FOR TENDER	17/01/09	RE

DILLON CONSULTING	
DESIGNED BY	RE
CHECKED BY	SSR
DRAWN BY	CGC
APPROVED BY	DBW
HOR. SCALE	AS SHOWN
VERTICAL SCALE	AS SHOWN
RELEASED FOR CONSTRUCTION	

ENGINEER'S SEAL
PROVINCE OF MANITOBA
R.B. ERIC
Member 22665
REGISTERED PROFESSIONAL ENGINEER
CONSULTANT PROJECT NUMBER
16-3353

THE CITY OF WINNIPEG
PUBLIC WORKS DEPARTMENT

WAVERLEY STREET UNDERPASS AT CN MILE 3.89 RIVERS SUB
CONTRACT 2: UNDERPASS STRUCTURE, RAILWORKS,
ROADWORKS, LAND DRAINAGE SEWER, PUMPING STATION
AND LANDSCAPING WORKS

ROAD AND RAILWAY PROFILES
AT BRIDGE SITE

CITY DRAWING NUMBER
U-239-2016-C2-CS-004
SHEET 004 OF 085
CONSULTANT DRAWING NUMBER
C2-CS-004