

SB WAVERLEY RIGHT TURN TO WB TAYLOR						
SEGMENT	STATION (START)	STATION (END)	NORTHING (START)	EASTING (START)	NORTHING (END)	EASTING (END)
L48	1+984.797	1+990.196	5523706.697	630874.798	5523707.086	630880.183
C29	1+990.196	2+005.430	5523707.086	630880.183	5523715.078	630892.386
L49	2+005.430	2+026.596	5523715.078	630892.386	5523733.822	630902.219
C30	2+026.596	2+051.560	5523733.822	630902.219	5523757.675	630908.951
L50	2+051.560	2+060.000	5523757.675	630908.951	5523766.095	630909.517

CURVE DATA					
#	R.	Δc	Tc	L.	L.C.
C29	15.000	58°11'26"	8.347	15.234	14.588
C30	60.000	23°50'22"	12.666	24.965	24.785

EB TAYLOR RIGHT TURN TO SB WAVERLEY						
SEGMENT	STATION (START)	STATION (END)	NORTHING (START)	EASTING (START)	NORTHING (END)	EASTING (END)
L57	2+718.809	2+723.809	5523677.625	630852.914	5523678.077	630857.894
C35	2+723.809	2+748.188	5523678.077	630857.894	5523675.352	630881.952
L58	2+748.188	2+758.736	5523675.352	630881.952	5523672.075	630891.978
C36	2+758.736	2+778.277	5523672.075	630891.978	5523657.100	630902.300
L59	2+778.277	2+783.277	5523657.100	630902.300	5523652.105	630902.061

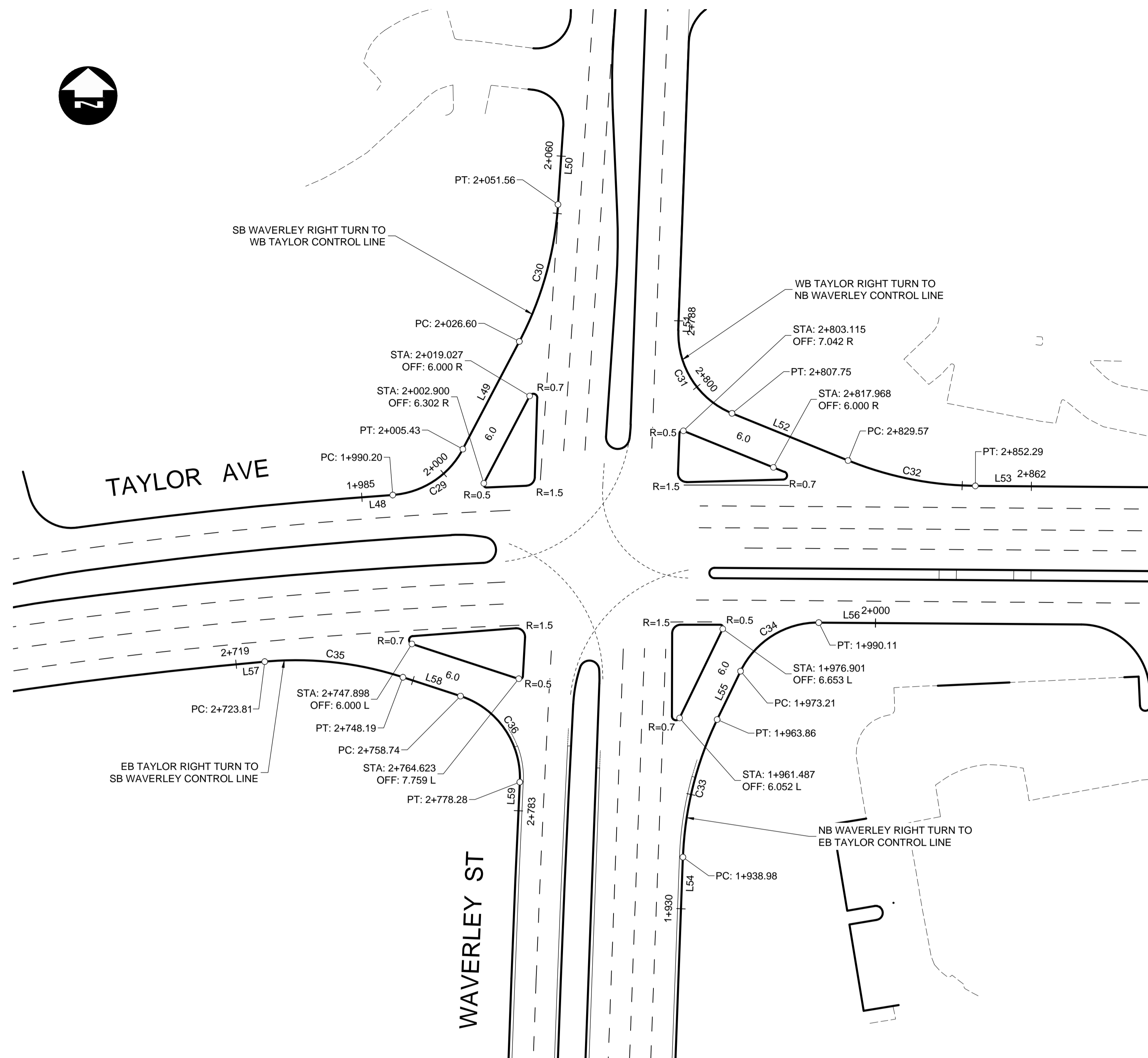
CURVE DATA					
#	R.	Δc	Tc	L.	L.C.
C35	60.000	23°16'50"	12.360	24.379	24.212
C36	15.000	74°38'34"	11.436	19.541	18.189

WB TAYLOR RIGHT TURN TO NB WAVERLEY						
SEGMENT	STATION (START)	STATION (END)	NORTHING (START)	EASTING (START)	NORTHING (END)	EASTING (END)
L51	2+787.760	2+789.427	5523737.415	630929.963	5523735.749	630929.902
C31	2+789.427	2+807.746	5523735.749	630929.902	5523721.305	630939.244
L52	2+807.746	2+829.566	5523721.305	630939.244	5523713.088	630959.458
C32	2+829.566	2+852.291	5523713.088	630959.458	5523708.673	630981.611
L53	2+852.291	2+862.052	5523708.673	630981.611	5523708.601	630991.371

CURVE DATA					
#	R.	Δc	Tc	L.	L.C.
C31	15.000	69°58'14"	10.497	18.318	17.201
C32	60.000	21°42'02"	11.500	22.725	22.589

NB WAVERLEY RIGHT TURN TO EB TAYLOR						
SEGMENT	STATION (START)	STATION (END)	NORTHING (START)	EASTING (START)	NORTHING (END)	EASTING (END)
L54	1+930.000	1+938.981	5523635.054	630930.370	5523644.029	630930.697
C33	1+938.981	1+963.857	5523644.029	630930.697	5523667.996	630936.660
L55	1+963.857	1+973.209	5523667.996	630936.660	5523676.413	630940.737
C34	1+973.209	1+990.114	5523676.413	630940.737	5523684.873	630954.347
L56	1+990.114	2+001.543	5523684.873	630954.347	5523684.789	630965.775

CURVE DATA					
#	R.	Δc	Tc	L.	L.C.
C33	60.000	23°45'16"	12.619	24.875	24.698
C34	15.000	64°34'28"	9.478	16.906	16.025



G:\CAD\163353\Technical\Workspaces\Engineering\Drawings and Figures\Roadworks\Contract\163353-C2-CON-CT-CONTROL-LINE-GEOMETRY.dwg

LEGEND	
b.o.c.	- BACK OF CURB
f.o.g.	- FACE OF 600mm WIDE CURB AND GUTTER PAN



UNDERGROUND STRUCTURES SUPV. U/G STRUCTURES DATE	B.M. ELEV. SEE SHEET C2-CT-007 FOR CONTROL POINT INFORMATION		ENGINEER'S SEAL 		WAYERLEY STREET UNDERPASS AT CN MILE 3.89 RIVERS SUB CONTRACT 2: UNDERPASS STRUCTURES, RAILWORKS, ROADWORKS, LAND DRAINAGE SEWER, PUMPING STATION AND LANDSCAPING WORKS	CITY DRAWING NUMBER U-239-2016-C2-CT-014 SHEET 014 OF 081
			DESIGNED BY RTP CHECKED BY DBW DRAWN BY TJH APPROVED BY DBW HOR. SCALE 1:500 RELEASED FOR CONSTRUCTION VERTICAL DATE			
LOCATION OF UNDERGROUND STRUCTURES AS SHOWN ARE BASED ON THE BEST INFORMATION AVAILABLE. BUT NO GUARANTEE IS GIVEN THAT ALL EXISTING UTILITIES ARE SHOWN OR THAT THE GIVEN LOCATIONS ARE EXACT. CONFIRMATION OF EXISTENCE AND EXACT LOCATION OF ALL SERVICES MUST BE OBTAINED FROM THE INDIVIDUAL UTILITIES BEFORE PROCEEDING WITH CONSTRUCTION.	0 ISSUED FOR TENDER 17/01/09 DBW NO. REVISIONS DATE BY	DATE DATE DATE	16-3353	CONTROL LINE GEOMETRY SMART CHANNELS (1 OF 2)	CONSULTANT DRAWING NUMBER C2-CT-014	C2-CT-014