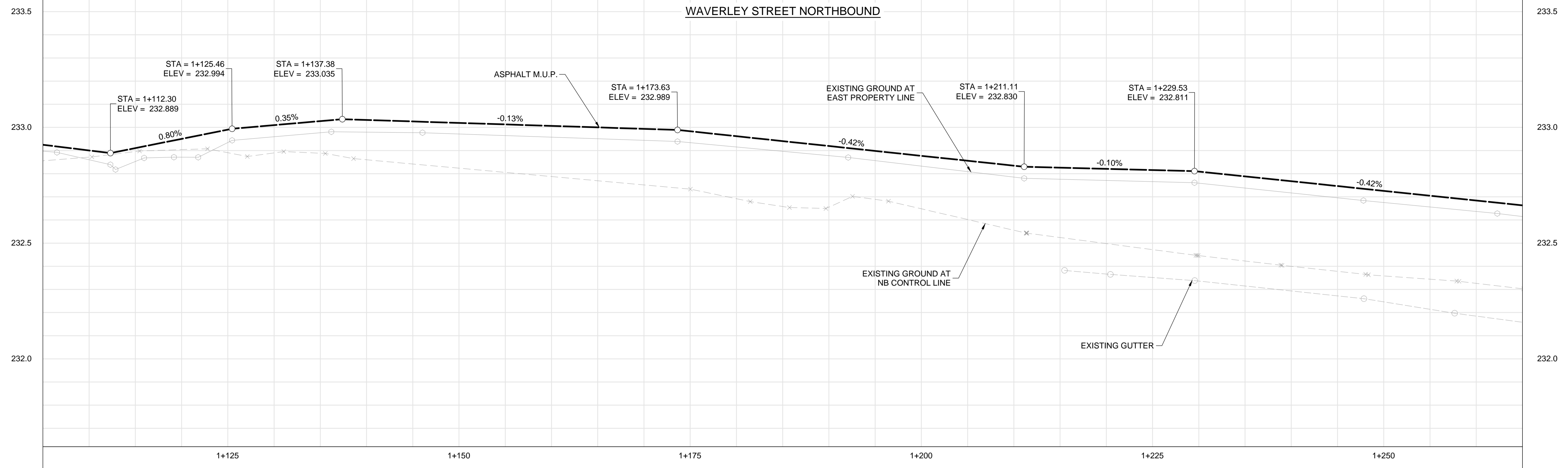
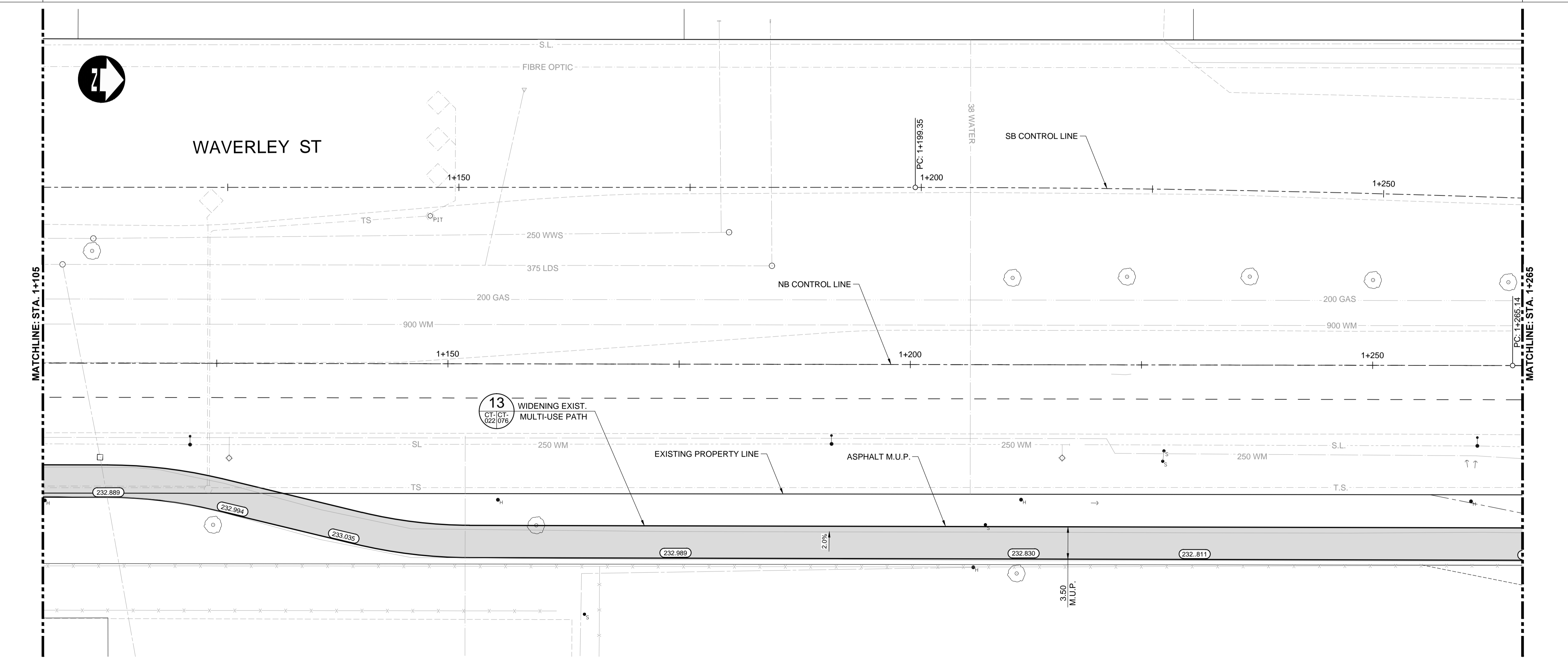


WAVERLEY STREET NORTHBOUND



- CONSTRUCTION NOTES:**
- ISOLATE MISCELLANEOUS ITEMS IN NEW CONCRETE WORKS AS PER SD-228C.
 - LEGAL PLAN AND UNDERGROUND INFORMATION FROM CITY OF WINNIPEG LBIS. CONTRACTOR VERIFY ALL UNDERGROUNDS IN THE FIELD.
 - CONTRACTOR TO TAKE PRECAUTIONARY STEPS TO AVOID DAMAGE FROM CONSTRUCTION ACTIVITIES TO TREES WITHIN THE LIMITS OF CONSTRUCTION.
 - LOCATION OF EXISTING SERVICES TO BE CONFIRMED IN THE FIELD BY THE CONTRACTOR.
 - INSTALL CB LEADS AT MIN. 1.0% SLOPE OR AS DIRECTED BY CONTRACT ADMINISTRATOR.
 - FOR CB LEADS, RIP RAP AND LDS INFORMATION SEE "CU" DRAWINGS.
 - CONTRACTOR SHALL CONFIRM EXISTING LEAD INVERT ELEVATIONS PRIOR TO INSTALLATION.



METRIC

WHOLE NUMBERS INDICATE MILLIMETRES
DECIMAL NUMBERS INDICATE METRES

WARNING

IF POWER EQUIPMENT OR EXPLOSIVES ARE TO BE USED FOR EXCAVATION ON THIS PROJECT THE CONTRACTOR MUST:

- NOTIFY THE GAS COMPANY OF THE PROPOSED LOCATION OF EXCAVATION.
- TAKE PRECAUTION TO AVOID DAMAGE TO GAS COMPANY INSTALLATIONS SEE PROVINCIAL REGULATION 210/72 FOR DETAILS.
- OBTAIN EXCAVATION PERMITS PRIOR TO CONSTRUCTION.



G:\CAD\163353\Technical\Workspace\Engineering\Drawings and Figures\Roadworks\Contract\163353-C2-CON-CT-PLAN-PROFILE-WAVERLEY-SOUTH.dwg

150 WM	WATERMAIN	150 WM	CONCRETE	150 WM	WATERMAIN	150 WM	WATERMAIN
HYDRANT	HYDRANT	ASPHALT	LAND DRAINAGE SEWER	300 LDS	LAND DRAINAGE SEWER	300 LDS	LAND DRAINAGE SEWER
VALVE	VALVE	PLANING	WASTE WATER SEWER	250 WWS	WASTE WATER SEWER	250 WWS	WASTE WATER SEWER
MANHOLE	MANHOLE	SIDEWALK	HYDRANT		HYDRANT		HYDRANT
CATCH BASIN	CATCH BASIN	PAVING STONES	VALVE		VALVE		VALVE
CURB INLET	CURB INLET	PARTIAL DEPTH REPAIR	Q PROFILE		Q PROFILE		Q PROFILE
300 LDS	LAND DRAINAGE SEWER	PROPERTY LINE	NORTH/WEST GUTTER		NORTH/WEST GUTTER		NORTH/WEST GUTTER
250 WWS	WASTE WATER SEWER	DRAINAGE ARROW	SOUTH/EAST GUTTER		SOUTH/EAST GUTTER		SOUTH/EAST GUTTER
HYDRO	HYDRO	CURB RAMP (SD-229C)	NORTH/WEST DITCH		NORTH/WEST DITCH		NORTH/WEST DITCH
M.T.S.	M.T.S.	DETECTABLE WARNING	SOUTH/EAST DITCH		SOUTH/EAST DITCH		SOUTH/EAST DITCH
100 GAS	GAS	SURFACE TILE (SD-229AA)					
EXISTING	LEGEND-PLAN	PROPOSED	EXISTING	LEGEND-PLAN	PROPOSED	EXISTING	LEGEND-PROFILE
							PROPOSED

UNDERGROUND STRUCTURES

SUPPLY: U/G STRUCTURES DATE

LOCATION OF UNDERGROUND STRUCTURES AS SHOWN ARE BASED ON THE BEST INFORMATION AVAILABLE, BUT NO GUARANTEE IS GIVEN THAT ALL EXISTING UTILITIES ARE SHOWN OR THAT THE GIVEN LOCATIONS ARE EXACT. CONFIRMATION OF EXISTENCE AND EXACT LOCATION OF ALL SERVICES MUST BE OBTAINED FROM THE INDIVIDUAL UTILITIES BEFORE PROCEEDING WITH CONSTRUCTION.

B.M. ELEV.	SEE SHEET C2-CT-007 FOR CONTROL POINT INFORMATION		
0	ISSUED FOR TENDER	17/01/09	DBW
NO.	REVISIONS	DATE	BY

DESIGNED BY	RTP	CHECKED BY	DBW
DRAWN BY	TJH	APPROVED BY	DBW
HOR. SCALE	1:250	RELEASED FOR CONSTRUCTION	
VERTICAL	1:10	DATE	

ENGINEER'S SEAL

PROVINCE OF MANITOBA

D.B. WIEBE

Member 22480

REGISTERED PROFESSIONAL ENGINEER

CONSULTANT PROJECT NUMBER

16-3353

THE CITY OF WINNIPEG
PUBLIC WORKS DEPARTMENT

Winnipeg

WAVERLEY STREET UNDERPASS AT CN MILE 3.89 RIVERS SUB CONTRACT 2: UNDERPASS STRUCTURES, RAILWORKS, ROADWORKS, LAND DRAINAGE SEWER, PUMPING STATION AND LANDSCAPING WORKS

WAVERLEY STREET - STA. 1+105 TO 1+265 (PLAN-PROFILE)

CITY DRAWING NUMBER: U-239-2016-C2-CT-022
SHEET OF: 022 OF 081
CONSULTANT DRAWING NUMBER: C2-CT-022