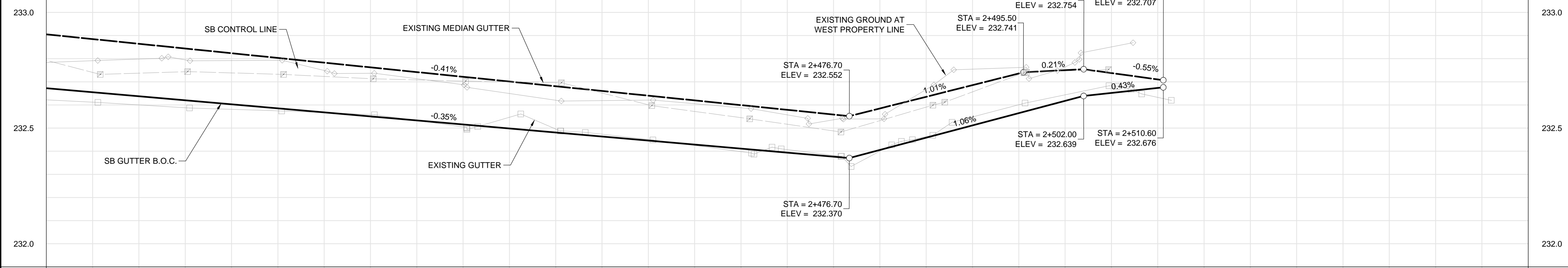
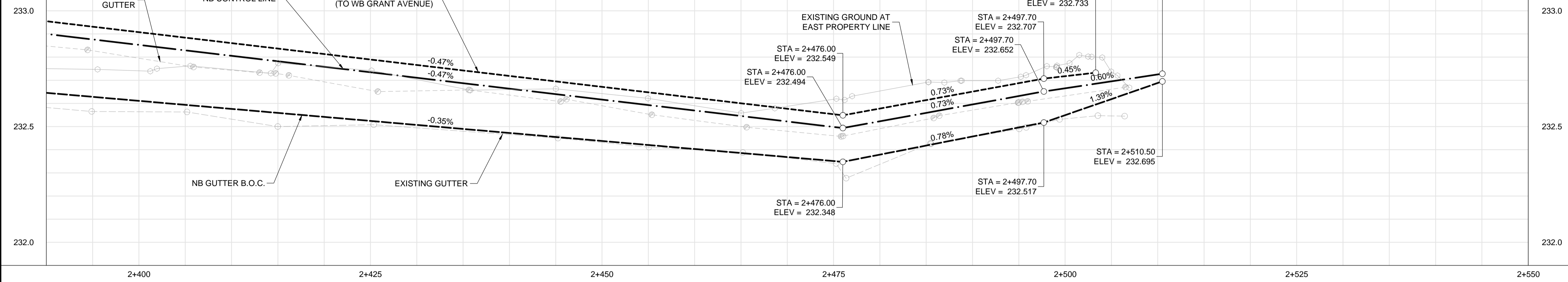


WAVERLEY STREET SOUTHBOUND

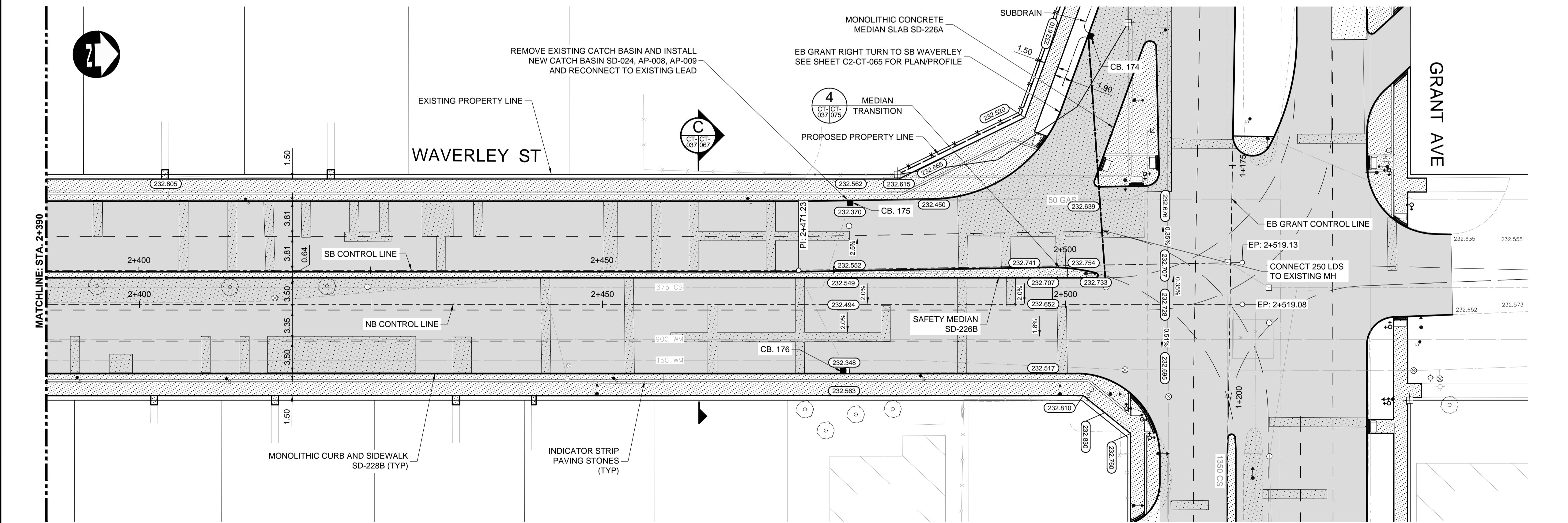


WAVERLEY STREET NORTHBOUND



- CONSTRUCTION NOTES:**
- ISOLATE MISCELLANEOUS ITEMS IN NEW CONCRETE WORKS AS PER SD-228C.
  - LEGAL PLAN AND UNDERGROUND INFORMATION FROM CITY OF WINNIPEG LBIS. CONTRACTOR VERIFY ALL UNDERGROUNDS IN THE FIELD.
  - CONTRACTOR TO TAKE PRECAUTIONARY STEPS TO AVOID DAMAGE FROM CONSTRUCTION ACTIVITIES TO TREES WITHIN THE LIMITS OF CONSTRUCTION.
  - LOCATION OF EXISTING SERVICES TO BE CONFIRMED IN THE FIELD BY THE CONTRACTOR.
  - INSTALL CB LEADS AT MIN. 1.0% SLOPE OR AS DIRECTED BY CONTRACT ADMINISTRATOR.
  - FOR CB LEADS, RIP RAP AND LDS INFORMATION SEE "CU" DRAWINGS.
  - CONTRACTOR SHALL CONFIRM EXISTING LEAD INVERT ELEVATIONS PRIOR TO INSTALLATION.

CATCH BASINS					
CB	STA	AP	RIM	BTM	INV
CB. 175	2+2476	AP-008 AP-009	232.370	230.130	230.730
CB. 176	2+475	AP-008 AP-009	232.348	230.108	230.708



EXISTING	LEGEND-PLAN	PROPOSED	EXISTING	LEGEND-PLAN	PROPOSED	EXISTING	LEGEND-PROFILE	PROPOSED
150 WM	WATERMAIN	150 WM	CONCRETE	ASPHALT	150 WM	WATERMAIN	150 WM	WATERMAIN
300 LDS	HYDRANT	300 LDS	PAVING STONES	PAVING STONES	300 LDS	LAND DRAINAGE SEWER	300 LDS	LAND DRAINAGE SEWER
250 WWS	VALVE	250 WWS	PARTIAL DEPTH REPAIR	PARTIAL DEPTH REPAIR	250 WWS	WASTE WATER SEWER	250 WWS	WASTE WATER SEWER
300 LDS	MANHOLE	300 LDS	PROPERTY LINE	PROPERTY LINE	300 LDS	HYDRANT	300 LDS	HYDRANT
250 WWS	CATCH BASIN	250 WWS	DRAINAGE ARROW	DRAINAGE ARROW	250 WWS	VALVE	250 WWS	VALVE
100 GAS	CURB INLET	100 GAS	DETECTABLE WARNING SURFACE TILE (SD-229AA)	DETECTABLE WARNING SURFACE TILE (SD-229AA)	100 GAS	PROFILE	100 GAS	PROFILE
100 GAS	LAND DRAINAGE SEWER	100 GAS	CURB RAMP (SD-229C)	CURB RAMP (SD-229C)	100 GAS	NORTH/WEST GUTTER	100 GAS	NORTH/WEST GUTTER
100 GAS	WASTE WATER SEWER	100 GAS	INDICATOR STRIP PAVING STONES (TYP)	INDICATOR STRIP PAVING STONES (TYP)	100 GAS	SOUTH/EAST GUTTER	100 GAS	SOUTH/EAST GUTTER
100 GAS	HYDRO	100 GAS			100 GAS	NORTH/WEST DITCH	100 GAS	NORTH/WEST DITCH
100 GAS	M.T.S.	100 GAS			100 GAS	SOUTH/EAST DITCH	100 GAS	SOUTH/EAST DITCH
100 GAS	GAS	100 GAS			100 GAS		100 GAS	

UNDERGROUND STRUCTURES		B.M. ELEV.	
SUPPLY	U/G STRUCTURES	DATE	DATE

DESIGNED BY		CHECKED BY	
DATE	DATE	DATE	DATE
PMW	RTP		
RD	DBW		

ENGINEER'S SEAL	
PROVINCE OF MANITOBA	REGISTERED PROFESSIONAL ENGINEER
D.B. WIEBE	Member 22480
CONSULTANT PROJECT NUMBER 16-3353	

**THE CITY OF WINNIPEG PUBLIC WORKS DEPARTMENT**

WAVERLEY STREET UNDERPASS AT CN MILE 3.89 RIVERS SUB CONTRACT 2: UNDERPASS STRUCTURES, RAILWORKS, ROADWORKS, LAND DRAINAGE SEWER, PUMPING STATION AND LANDSCAPING WORKS

WAVERLEY STREET - STA. 2+385 TO END (PLAN-PROFILE)

CITY DRAWING NUMBER U-239-2016-C2-CT-037 SHEET 037 OF 081 CONSULTANT DRAWING NUMBER C2-CT-037

G:\CAD\163353\Technical\Workspaces\Engineering\Drawings and Figures\Roadworks\Contract\163353-C2-CON-CT-PLAN-PROFILE-WAVERLEY-NORTH.dwg