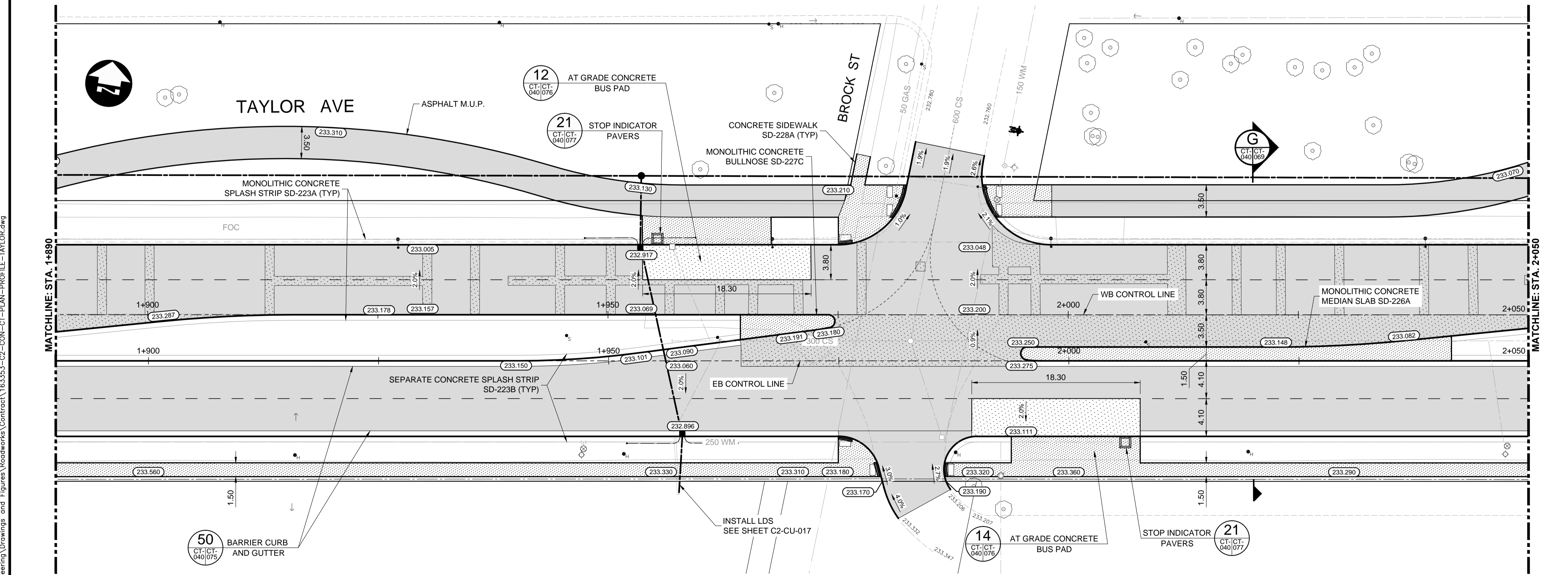


- CONSTRUCTION NOTES:**
- ISOLATE MISCELLANEOUS ITEMS IN NEW CONCRETE WORKS AS PER SD-228C.
 - LEGAL PLAN AND UNDERGROUND INFORMATION FROM CITY OF WINNIPEG LBIS. CONTRACTOR VERIFY ALL UNDERGROUNDS IN THE FIELD.
 - CONTRACTOR TO TAKE PRECAUTIONARY STEPS TO AVOID DAMAGE FROM CONSTRUCTION ACTIVITIES TO TREES WITHIN THE LIMITS OF CONSTRUCTION.
 - LOCATION OF EXISTING SERVICES TO BE CONFIRMED IN THE FIELD BY THE CONTRACTOR.
 - INSTALL CB LEADS AT MIN. 1.0% SLOPE OR AS DIRECTED BY CONTRACT ADMINISTRATOR.
 - FOR CB LEADS, RIP RAP AND LDS INFORMATION SEE "CU" DRAWINGS.
 - CONTRACTOR SHALL CONFIRM EXISTING LEAD INVERT ELEVATIONS PRIOR TO INSTALLATION.



METRIC

WHOLE NUMBERS INDICATE MILLIMETRES
DECIMAL NUMBERS INDICATE METRES

WARNING

IF POWER EQUIPMENT OR EXPLOSIVES ARE TO BE USED FOR EXCAVATION ON THIS PROJECT THE CONTRACTOR MUST:

- NOTIFY THE GAS COMPANY OF THE PROPOSED LOCATION OF EXCAVATION.
- TAKE PRECAUTION TO AVOID DAMAGE TO GAS COMPANY INSTALLATIONS SEE PROVINCIAL REGULATION 210/72 FOR DETAILS.
- OBTAIN EXCAVATION PERMITS PRIOR TO CONSTRUCTION.



EXISTING	LEGEND-PLAN	PROPOSED	EXISTING	LEGEND-PLAN	PROPOSED	EXISTING	LEGEND-PROFILE	PROPOSED
150 WM	WATERMAIN	150 WM	CONCRETE	CONCRETE	150 WM	WATERMAIN	150 WM	WATERMAIN
300 LDS	HYDRANT	300 LDS	ASPHALT	ASPHALT	300 LDS	LAND DRAINAGE SEWER	300 LDS	LAND DRAINAGE SEWER
250 WWS	VALVE	250 WWS	PLANING	PLANING	250 WWS	WASTE WATER SEWER	250 WWS	WASTE WATER SEWER
300 M	MANHOLE	300 M	SIDEWALK	SIDEWALK	300 M	HYDRANT	300 M	HYDRANT
300 C	CATCH BASIN	300 C	PAVING STONES	PAVING STONES	300 C	VALVE	300 C	VALVE
300 I	CURB INLET	300 I	PARTIAL DEPTH REPAIR	PARTIAL DEPTH REPAIR	300 I	C PROFILE	300 I	C PROFILE
300 L	LAND DRAINAGE SEWER	300 L	PROPERTY LINE	PROPERTY LINE	300 L	NORTH/WEST GUTTER	300 L	NORTH/WEST GUTTER
250 WWS	WASTE WATER SEWER	250 WWS	DRAINAGE ARROW	DRAINAGE ARROW	250 WWS	SOUTH/EAST GUTTER	250 WWS	SOUTH/EAST GUTTER
HYDRO	HYDRO	HYDRO	CURB RAMP (SD-229C)	CURB RAMP (SD-229C)	HYDRO	NORTH/WEST DITCH	HYDRO	NORTH/WEST DITCH
M.T.S.	M.T.S.	M.T.S.	DETECTABLE WARNING	DETECTABLE WARNING	M.T.S.	SOUTH/EAST DITCH	M.T.S.	SOUTH/EAST DITCH
100 GAS	GAS	100 GAS	SURFACE TILE (SD-229AA)	SURFACE TILE (SD-229AA)	100 GAS		100 GAS	

UNDERGROUND STRUCTURES

SUPV. U/G STRUCTURES DATE

LOCATION OF UNDERGROUND STRUCTURES AS SHOWN ARE BASED ON THE BEST INFORMATION AVAILABLE. BUT NO GUARANTEE IS GIVEN THAT ALL EXISTING UTILITIES ARE SHOWN OR THAT THE GIVEN LOCATIONS ARE EXACT. CONFIRMATION OF EXISTENCE AND EXACT LOCATION OF ALL SERVICES MUST BE OBTAINED FROM THE INDIVIDUAL UTILITIES BEFORE PROCEEDING WITH CONSTRUCTION.

B.M. ELEV.

SEE SHEET C2-CT-007 FOR CONTROL POINT INFORMATION

DESIGNED BY	RTP	CHECKED BY	DBW
DRAWN BY	RD	APPROVED BY	DBW
HOR. SCALE	1:250	RELEASED FOR CONSTRUCTION	
VERTICAL	1:10	DATE	

DILLON CONSULTING

ENGINEER'S SEAL

PROVINCE OF MANITOBA

D.B. WIEBE

Member 22480

REGISTERED PROFESSIONAL ENGINEER

CONSULTANT PROJECT NUMBER

16-3353

THE CITY OF WINNIPEG

PUBLIC WORKS DEPARTMENT

Waverley Street Underpass at CN Mile 3.89 Rivers Sub Contract 2: Underpass Structures, Railworks, Roadworks, Land Drainage Sewer, Pumping Station and Landscaping Works

TAYLOR AVENUE - STA. 1+890 TO 2+050 (PLAN-PROFILE)

CITY DRAWING NUMBER U-239-2016-C2-CT-040

SHEET 040 OF 081

CONSULTANT DRAWING NUMBER C2-CT-040

G:\CAD\163353\Technical\Workspaces\Drawings and Figures\Roadworks\Contract\163353-C2-CON-CT-PLAN-PROFILE-TAYLOR.dwg