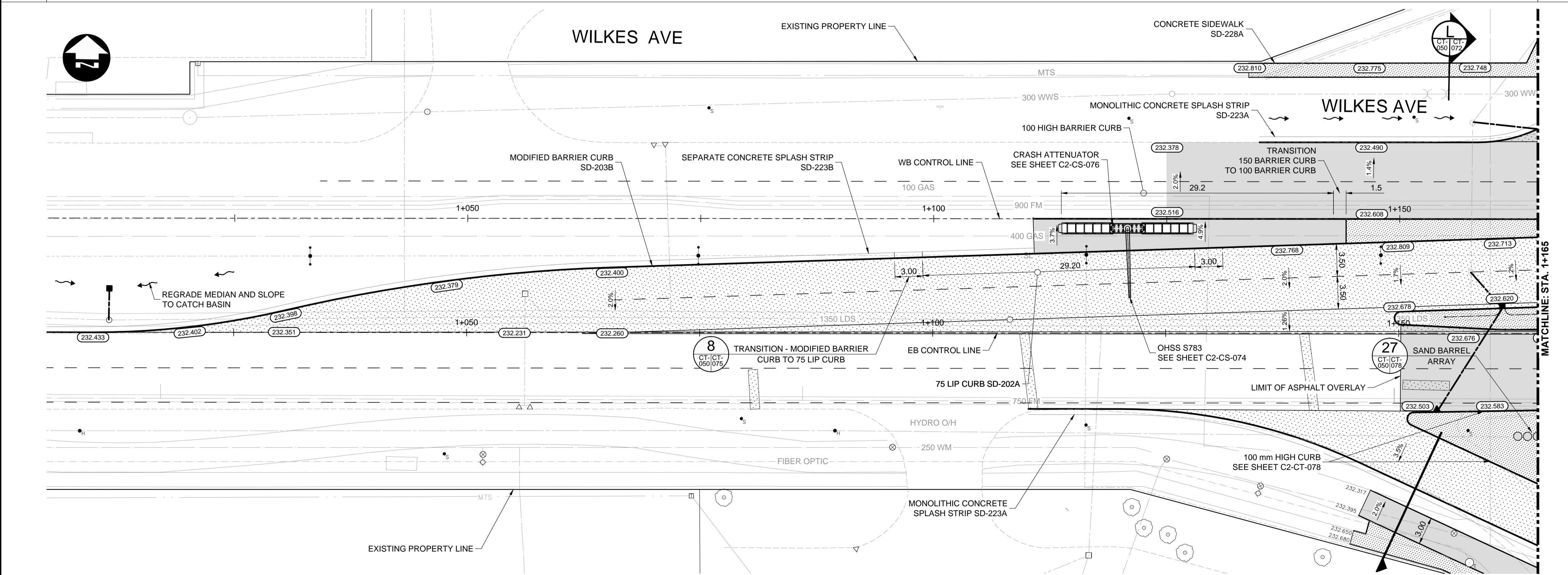


- CONSTRUCTION NOTES:**
- ISOLATE MISCELLANEOUS ITEMS IN NEW CONCRETE WORKS AS PER SD-228C.
  - LEGAL PLAN AND UNDERGROUND INFORMATION FROM CITY OF WINNIPEG LBIS. CONTRACTOR VERIFY ALL UNDERGROUNDS IN THE FIELD.
  - CONTRACTOR TO TAKE PRECAUTIONARY STEPS TO AVOID DAMAGE FROM CONSTRUCTION ACTIVITIES TO TREES WITHIN THE LIMITS OF CONSTRUCTION.
  - LOCATION OF EXISTING SERVICES TO BE CONFIRMED IN THE FIELD BY THE CONTRACTOR.
  - INSTALL CB LEADS AT MIN. 1.0% SLOPE OR AS DIRECTED BY CONTRACT ADMINISTRATOR.
  - FOR CB LEADS, RIP RAP AND LDS INFORMATION SEE "CU" DRAWINGS.
  - CONTRACTOR SHALL CONFIRM EXISTING LEAD INVERT ELEVATIONS PRIOR TO INSTALLATION.



**METRIC**  
WHOLE NUMBERS INDICATE MILLIMETRES  
DECIMALIZED NUMBERS INDICATE METRES

**WARNING**  
IF POWER EQUIPMENT OR EXPLOSIVES ARE TO BE USED FOR EXCAVATION ON THIS PROJECT THE CONTRACTOR MUST:

- NOTIFY THE GAS COMPANY OF THE PROPOSED LOCATION OF EXCAVATION.
- TAKE PRECAUTION TO AVOID DAMAGE TO GAS COMPANY INSTALLATIONS SEE PROVINCIAL REGULATION 210/72 FOR DETAILS.
- OBTAIN EXCAVATION PERMITS PRIOR TO CONSTRUCTION.



**THE CITY OF WINNIPEG**  
PUBLIC WORKS DEPARTMENT

Waverley Street Underpass at CN Mile 3.89 Rivers Sub  
Contract 2: Underpass Structures, Railworks,  
Roadworks, Land Drainage Sewer, Pumping Station  
and Landscaping Works

WILKES AVENUE-HURST WAY - START TO  
STA. 1+165 (PLAN-PROFILE)

CITY DRAWING NUMBER  
U-239-2016-C2-CT-050  
SHEET 050 OF 081  
CONSULTANT DRAWING NUMBER  
C2-CT-050

EXISTING	LEGEND-PLAN	PROPOSED	EXISTING	LEGEND-PLAN	PROPOSED	EXISTING	LEGEND-PROFILE	PROPOSED
150 WM	WATERMAIN	150 WM	CONCRETE	CONCRETE	CONCRETE	150 WM	WATERMAIN	150 WM
300 WWS	WASTE WATER SEWER	300 WWS	ASPHALT	ASPHALT	ASPHALT	300 LDS	LAND DRAINAGE SEWER	300 LDS
250 WWS	WASTE WATER SEWER	250 WWS	PLANING	PLANING	PLANING	250 WWS	WASTE WATER SEWER	250 WWS
100 GAS	GAS	100 GAS	SIDEWALK	SIDEWALK	SIDEWALK	+	HYDRANT	+
HYDRO	HYDRO	HYDRO	PAVING STONES	PAVING STONES	PAVING STONES	○	VALVE	○
MTS	M.T.S.	MTS	PARTIAL DEPTH REPAIR	PARTIAL DEPTH REPAIR	PARTIAL DEPTH REPAIR	□	Q PROFILE	□
150 WM	WATERMAIN	150 WM	PROPERTY LINE	PROPERTY LINE	PROPERTY LINE	---	NORTH/WEST GUTTER	---
300 WWS	WASTE WATER SEWER	300 WWS	DRAINAGE ARROW	DRAINAGE ARROW	DRAINAGE ARROW	→	SOUTH/EAST GUTTER	---
250 WWS	WASTE WATER SEWER	250 WWS	CURB RAMP (SD-229C)	CURB RAMP (SD-229C)	CURB RAMP (SD-229C)	▲	NORTH/WEST DITCH	---
100 GAS	GAS	100 GAS	DETECTABLE WARNING	DETECTABLE WARNING	DETECTABLE WARNING	■	SOUTH/EAST DITCH	---
HYDRO	HYDRO	HYDRO	SURFACE TILE (SD-229AA)	SURFACE TILE (SD-229AA)	SURFACE TILE (SD-229AA)	▭		

**UNDERGROUND STRUCTURES**  
SUPPLY, U/G STRUCTURES DATE

LOCATION OF UNDERGROUND STRUCTURES AS SHOWN ARE BASED ON THE BEST INFORMATION AVAILABLE. BUT NO GUARANTEE IS GIVEN THAT ALL EXISTING UTILITIES ARE SHOWN OR THAT THE GIVEN LOCATIONS ARE EXACT. CONFIRMATION OF EXISTENCE AND EXACT LOCATION OF ALL SERVICES MUST BE OBTAINED FROM THE INDIVIDUAL UTILITIES BEFORE PROCEEDING WITH CONSTRUCTION.

B.M. ELEV.	SEE SHEET C2-CT-007 FOR CONTROL POINT INFORMATION		
DESIGNED BY	PMW	CHECKED BY	RTP
DRAWN BY	PMW	APPROVED BY	DBW
HOR. SCALE	1:250	RELEASED FOR CONSTRUCTION	
VERTICAL	1:10		
0	ISSUED FOR TENDER	17/01/09	DBW
NO.	REVISIONS	DATE	BY

**DILLON CONSULTING**

ENGINEER'S SEAL  
PROVINCE OF MANITOBA  
D.B. WIEBE  
Member 22480  
REGISTERED PROFESSIONAL ENGINEER

CONSULTANT PROJECT NUMBER  
16-3353

G:\CAD\163353\Technical\Workspace\Engineering\Drawings and Figures\Roadworks\Contract\163353-C2-CON-CT-PLAN-PROFILE-HURST.dwg