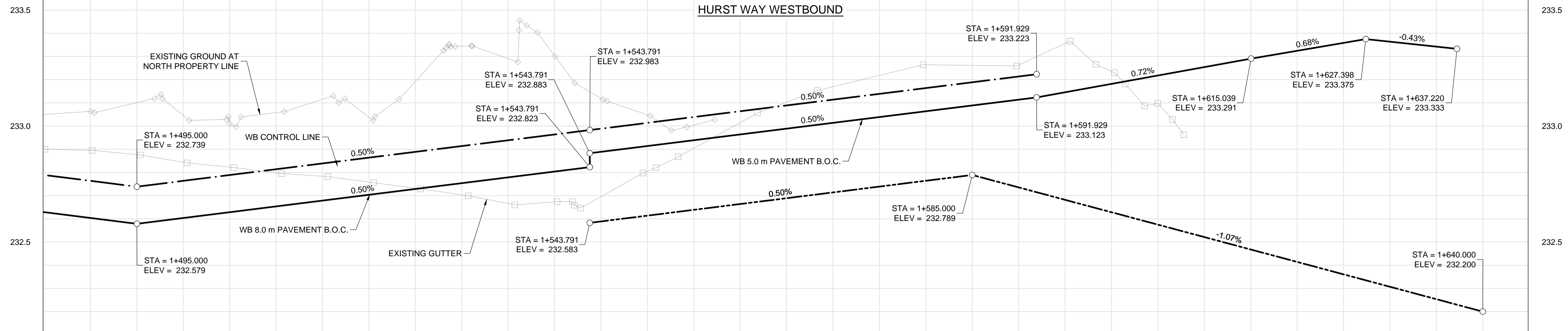
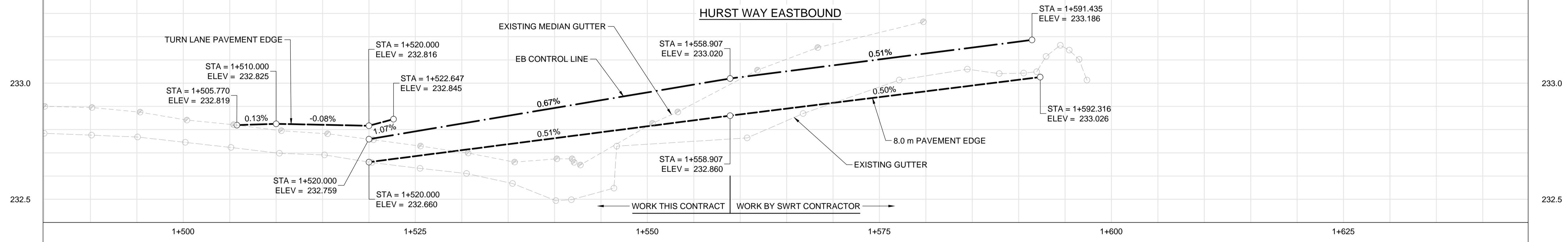


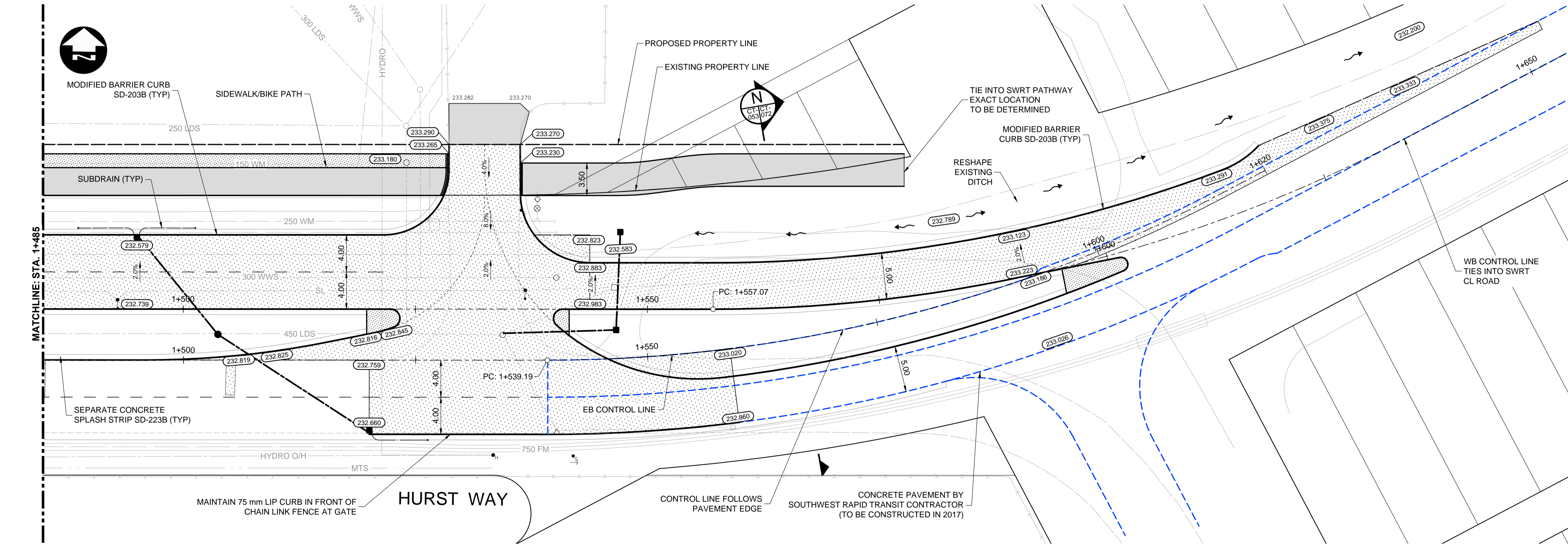
HURST WAY WESTBOUND



HURST WAY EASTBOUND



- CONSTRUCTION NOTES:**
- ISOLATE MISCELLANEOUS ITEMS IN NEW CONCRETE WORKS AS PER SD-228C.
 - LEGAL PLAN AND UNDERGROUND INFORMATION FROM CITY OF WINNIPEG LBIS. CONTRACTOR VERIFY ALL UNDERGROUNDS IN THE FIELD.
 - CONTRACTOR TO TAKE PRECAUTIONARY STEPS TO AVOID DAMAGE FROM CONSTRUCTION ACTIVITIES TO TREES WITHIN THE LIMITS OF CONSTRUCTION.
 - LOCATION OF EXISTING SERVICES TO BE CONFIRMED IN THE FIELD BY THE CONTRACTOR.
 - INSTALL CB LEADS AT MIN. 1.0% SLOPE OR AS DIRECTED BY CONTRACT ADMINISTRATOR.
 - FOR CB LEADS, RIP RAP AND LDS INFORMATION SEE "CU" DRAWINGS.
 - CONTRACTOR SHALL CONFIRM EXISTING LEAD INVERT ELEVATIONS PRIOR TO INSTALLATION.



METRIC

WHOLE NUMBERS INDICATE MILLIMETRES
DECIMALIZED NUMBERS INDICATE METRES

WARNING

- IF POWER EQUIPMENT OR EXPLOSIVES ARE TO BE USED FOR EXCAVATION ON THIS PROJECT THE CONTRACTOR MUST:
- NOTIFY THE GAS COMPANY OF THE PROPOSED LOCATION OF EXCAVATION.
 - TAKE PRECAUTION TO AVOID DAMAGE TO GAS COMPANY INSTALLATIONS SEE PROVINCIAL REGULATION 210/72 FOR DETAILS.
 - OBTAIN EXCAVATION PERMITS PRIOR TO CONSTRUCTION.

APEGM
Certificate of Authorization
Dillon Consulting Limited (MB)
No. 1789 Date: 17/01/09

150 WM	WATERMAIN	150 WM	CONCRETE	150 WM	WATERMAIN	150 WM	WATERMAIN
300 LDS	HYDRANT	300 LDS	ASPHALT	300 LDS	LAND DRAINAGE SEWER	300 LDS	LAND DRAINAGE SEWER
250 WWS	VALVE	250 WWS	PLANING	250 WWS	WASTE WATER SEWER	250 WWS	WASTE WATER SEWER
300 WWS	MANHOLE	300 WWS	SIDEWALK	300 WWS	HYDRANT	300 WWS	HYDRANT
250 WWS	CATCH BASIN	250 WWS	PAVING STONES	250 WWS	VALVE	250 WWS	VALVE
100 GAS	CURB INLET	100 GAS	PARTIAL DEPTH REPAIR	100 GAS	Q PROFILE	100 GAS	Q PROFILE
100 GAS	SEPARATE CONCRETE SPLASH STRIP SD-223B (TYP)	100 GAS	PROPERTY LINE	100 GAS	NORTH/WEST GUTTER	100 GAS	NORTH/WEST GUTTER
100 GAS	HYDRO	100 GAS	DRAINAGE ARROW	100 GAS	SOUTH/EAST GUTTER	100 GAS	SOUTH/EAST GUTTER
100 GAS	M.T.S.	100 GAS	CURB RAMP (SD-229C)	100 GAS	NORTH/WEST DITCH	100 GAS	NORTH/WEST DITCH
100 GAS	GAS	100 GAS	DETECTABLE WARNING SURFACE TILE (SD-229AA)	100 GAS	SOUTH/EAST DITCH	100 GAS	SOUTH/EAST DITCH
EXISTING	LEGEND-PLAN	PROPOSED	EXISTING	LEGEND-PROFILE	PROPOSED	EXISTING	LEGEND-PROFILE

UNDERGROUND STRUCTURES

SUPPLY U/G STRUCTURES DATE

LOCATION OF UNDERGROUND STRUCTURES AS SHOWN ARE BASED ON THE BEST INFORMATION AVAILABLE. BUT NO GUARANTEE IS GIVEN THAT ALL EXISTING UTILITIES ARE SHOWN OR THAT THE GIVEN LOCATIONS ARE EXACT. CONFIRMATION OF EXISTENCE AND EXACT LOCATION OF ALL SERVICES MUST BE OBTAINED FROM THE INDIVIDUAL UTILITIES BEFORE PROCEEDING WITH CONSTRUCTION.

DILLON CONSULTING

DESIGNED BY: PMW
CHECKED BY: RTP
DRAWN BY: PMW
APPROVED BY: DBW
HOR. SCALE: 1:250
VERTICAL: 1:10
RELEASED FOR CONSTRUCTION
DATE: _____

ENGINEER'S SEAL
PROVINCE OF MANITOBA
D.B. WIEBE
Member 22480
REGISTERED PROFESSIONAL ENGINEER
CONSULTANT PROJECT NUMBER
16-3353

THE CITY OF WINNIPEG
PUBLIC WORKS DEPARTMENT

WAVERLEY STREET UNDERPASS AT CN MILE 3.89 RIVERS SUB CONTRACT 2: UNDERPASS STRUCTURES, RAILWORKS, ROADWORKS, LAND DRAINAGE SEWER, PUMPING STATION AND LANDSCAPING WORKS

WILKES AVENUE-HURST WAY - STA. 1+485 TO END (PLAN-PROFILE)

CITY DRAWING NUMBER: U-239-2016-C2-CT-054
SHEET OF: 054 OF 081
CONSULTANT DRAWING NUMBER: C2-CT-054

G:\CAD\163353\Technical\Workspaces\Engineering\Drawings and Figures\Roadworks\Contract\163353-C2-CON-CT-PLAN-PROFILE-HURST.dwg