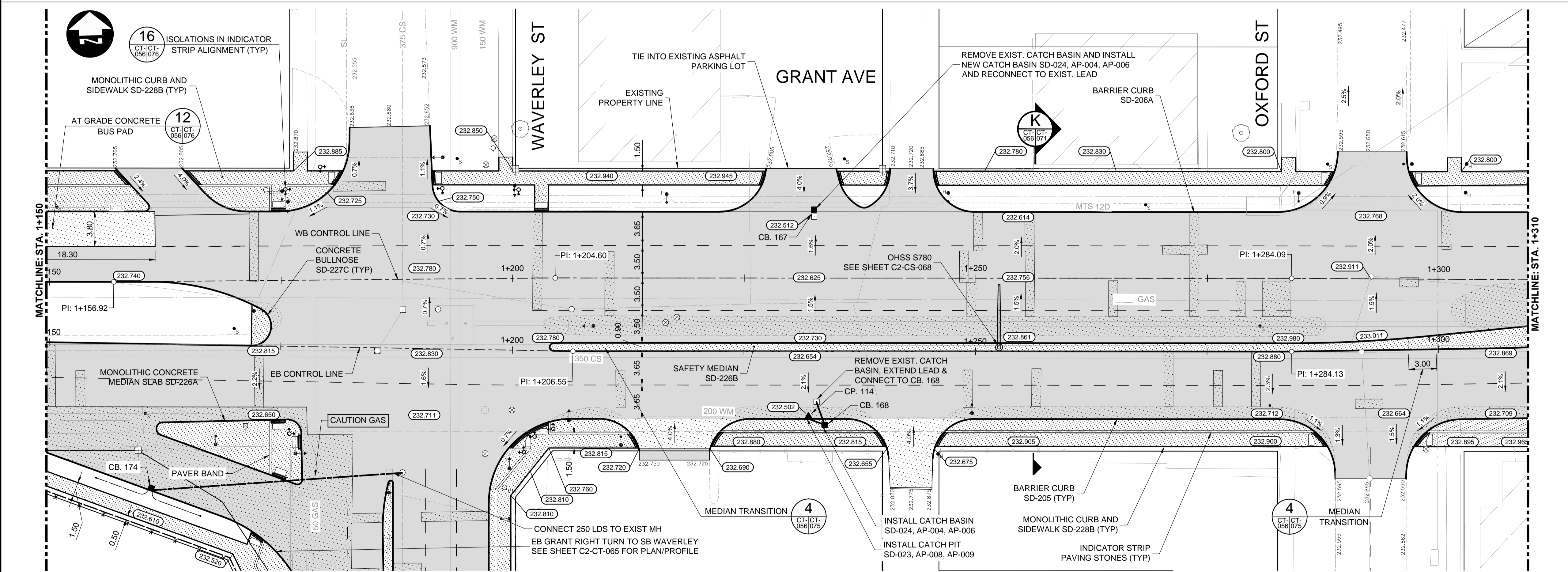
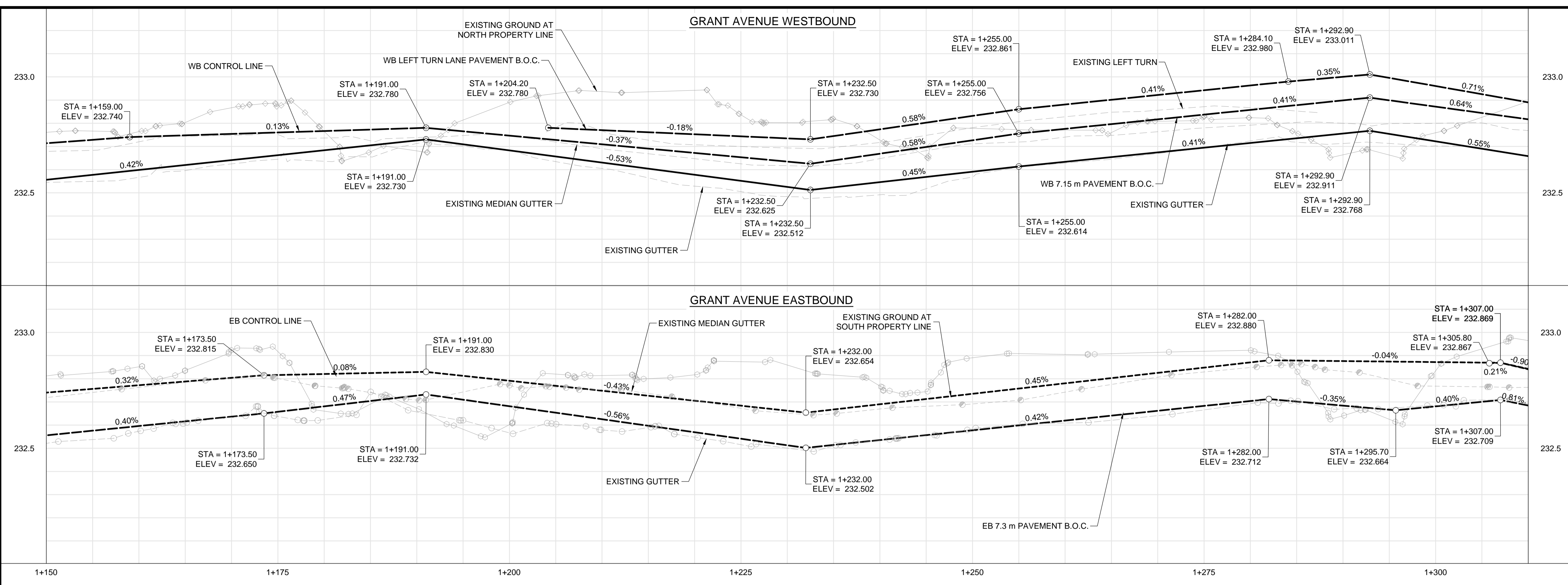


GRANT AVENUE WESTBOUND

GRANT AVENUE EASTBOUND

CONSTRUCTION NOTES:

- ISOLATE MISCELLANEOUS ITEMS IN NEW CONCRETE WORKS AS PER SD-228C.
- LEGAL PLAN AND UNDERGROUND INFORMATION FROM CITY OF WINNIPEG LBIS. CONTRACTOR VERIFY ALL UNDERGROUNDS IN THE FIELD.
- CONTRACTOR TO TAKE PRECAUTIONARY STEPS TO AVOID DAMAGE FROM CONSTRUCTION ACTIVITIES TO TREES WITHIN THE LIMITS OF CONSTRUCTION.
- LOCATION OF EXISTING SERVICES TO BE CONFIRMED IN THE FIELD BY THE CONTRACTOR.
- INSTALL CB LEADS AT MIN. 1.0% SLOPE OR AS DIRECTED BY CONTRACT ADMINISTRATOR.
- FOR CB LEADS, RIP RAP AND LDS INFORMATION SEE "CU" DRAWINGS.
- CONTRACTOR SHALL CONFIRM EXISTING LEAD INVERT ELEVATIONS PRIOR TO INSTALLATION.



CATCH BASINS					
CB	STA	AP	RIM	BTM	INV
CB. 167	1+232	AP-004 AP-006	232.512	230.272	230.872
CB. 168	1+232	AP-008 AP-009	232.690	230.450	231.050
CB. 174	1+161	AP-008 AP-009	232.349	230.109	230.709
CP. 114	1+233	AP-008 AP-009	232.502		231.652

METRIC

WHOLE NUMBERS INDICATE MILLIMETRES
DECIMALIZED NUMBERS INDICATE METRES

WARNING

- IF POWER EQUIPMENT OR EXPLOSIVES ARE TO BE USED FOR EXCAVATION ON THIS PROJECT THE CONTRACTOR MUST:
- NOTIFY THE GAS COMPANY OF THE PROPOSED LOCATION OF EXCAVATION.
 - TAKE PRECAUTION TO AVOID DAMAGE TO GAS COMPANY INSTALLATIONS SEE PROVINCIAL REGULATION 210/72 FOR DETAILS.
 - OBTAIN EXCAVATION PERMITS PRIOR TO CONSTRUCTION.

APEGM
Certificate of Authorization
Dillon Consulting Limited (MB)
No. 1789 Date: 17/01/09

G:\CAD\163353\Technical\Workspaces\Drawings and Figures\Roadworks\Contract\163353-C2-CON-CT-PLAN-PROFILE-GRANT.dwg

150 WM		300 LDS		250 WWS		150 WM		300 LDS		250 WWS	
WATERMAIN	HYDRANT	VALVE	MANHOLE	CATCH BASIN	CURB INLET	LAND DRAINAGE SEWER	WASTE WATER SEWER	CONCRETE	ASPHALT	PLANING	SIDEWALK
PAVING STONES	PARTIAL DEPTH REPAIR	PROPERTY LINE	DRAINAGE ARROW	CURB RAMP (SD-229C)	DETECTABLE WARNING	SURFACE TILE (SD-229AA)	WATERMAIN	LAND DRAINAGE SEWER	WASTE WATER SEWER	HYDRANT	VALVE
CP PROFILE	NORTH/WEST GUTTER	SOUTH/EAST GUTTER	NORTH/WEST DITCH	SOUTH/EAST DITCH	UNDERGROUND STRUCTURES	DATE					

B.M. ELEV.		SEE SHEET C2-CT-007 FOR CONTROL POINT INFORMATION	
0	ISSUED FOR TENDER	17/01/09	DBW
NO.	REVISIONS	DATE	BY

DESIGNED BY	PMW	CHECKED BY	RTP
DRAWN BY	PMW	APPROVED BY	DBW
HOR. SCALE	1:250	RELEASED FOR CONSTRUCTION	
VERTICAL	1:10	DATE	

ENGINEER'S SEAL
PROVINCE OF MANITOBA
D.B. WIEBE
Member
22480
REGISTERED PROFESSIONAL ENGINEER

THE CITY OF WINNIPEG
PUBLIC WORKS DEPARTMENT

Waverley Street Underpass at CN Mile 3.89 Rivers Sub
Contract 2: Underpass Structures, Railworks,
Roadworks, Land Drainage Sewer, Pumping Station
and Landscaping Works

CITY DRAWING NUMBER
U-239-2016-C2-CT-056

SHEET 056 OF 081

CONSULTANT DRAWING NUMBER
C2-CT-056

GRANT AVENUE - STA. 1+150 TO 1+310
(PLAN-PROFILE)