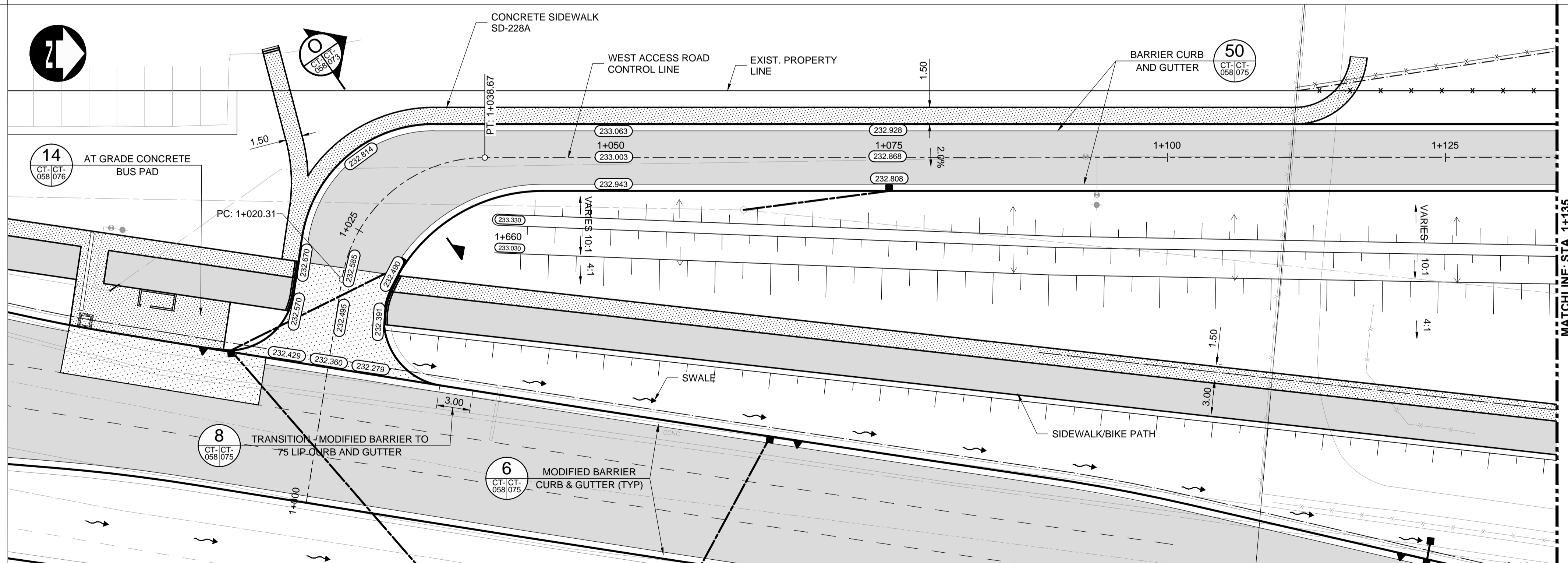
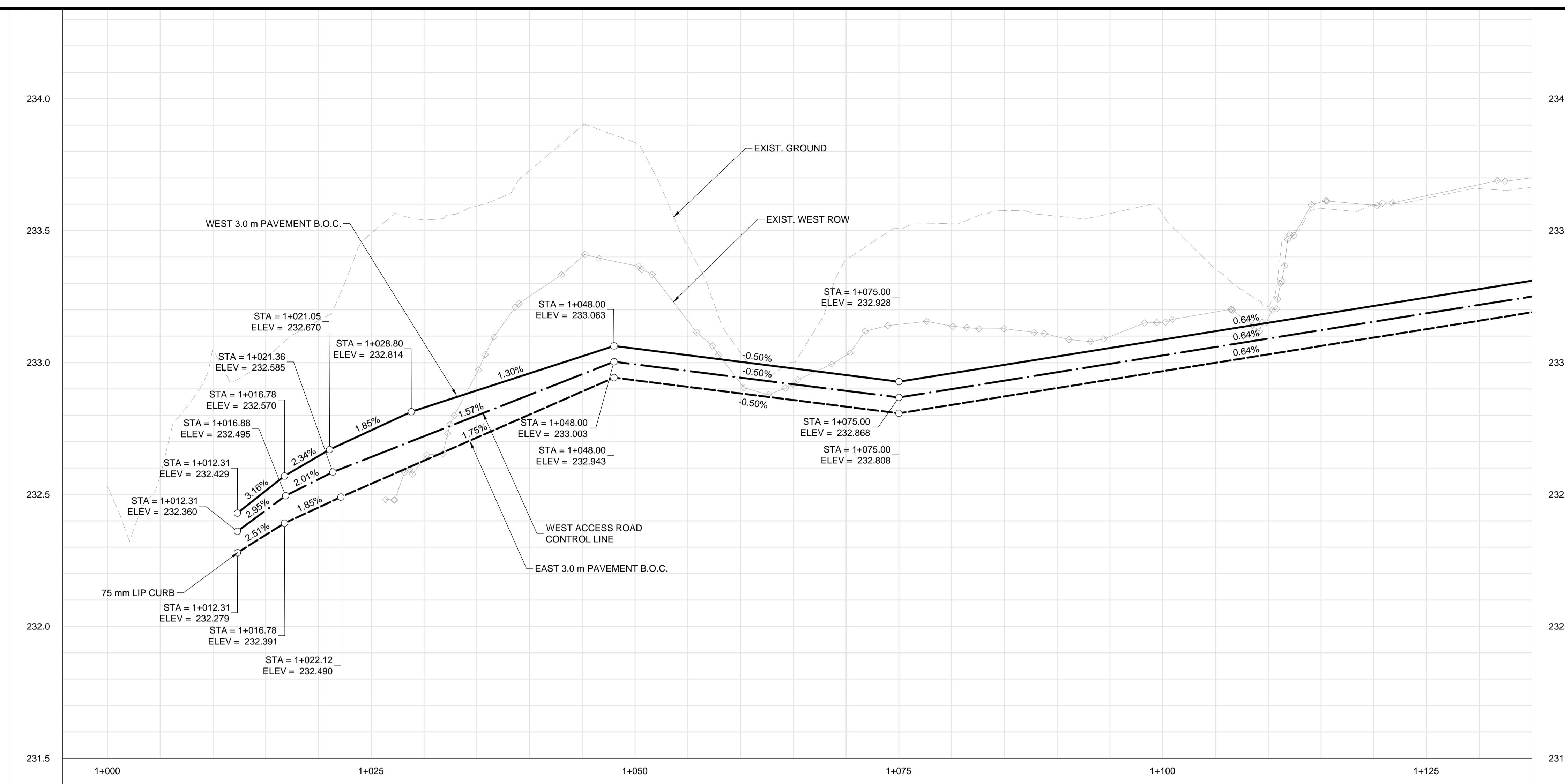


CONSTRUCTION NOTES:

- ISOLATE MISCELLANEOUS ITEMS IN NEW CONCRETE WORKS AS PER SD-228C.
- LEGAL PLAN AND UNDERGROUND INFORMATION FROM CITY OF WINNIPEG LBIS. CONTRACTOR VERIFY ALL UNDERGROUNDS IN THE FIELD.
- CONTRACTOR TO TAKE PRECAUTIONARY STEPS TO AVOID DAMAGE FROM CONSTRUCTION ACTIVITIES TO TREES WITHIN THE LIMITS OF CONSTRUCTION.
- LOCATION OF EXISTING SERVICES TO BE CONFIRMED IN THE FIELD BY THE CONTRACTOR.
- INSTALL CB LEADS AT MIN. 1.0% SLOPE OR AS DIRECTED BY CONTRACT ADMINISTRATOR.
- FOR CB LEADS, RIP RAP AND LDS INFORMATION SEE "CU" DRAWINGS.
- CONTRACTOR SHALL CONFIRM EXISTING LEAD INVERT ELEVATIONS PRIOR TO INSTALLATION.



METRIC

WHOLE NUMBERS INDICATE MILLIMETRES
DECIMALIZED NUMBERS INDICATE METRES

WARNING

IF POWER EQUIPMENT OR EXPLOSIVES ARE TO BE USED FOR EXCAVATION ON THIS PROJECT THE CONTRACTOR MUST:

- NOTIFY THE GAS COMPANY OF THE PROPOSED LOCATION OF EXCAVATION.
- TAKE PRECAUTION TO AVOID DAMAGE TO GAS COMPANY INSTALLATIONS SEE PROVINCIAL REGULATION 210/72 FOR DETAILS.
- OBTAIN EXCAVATION PERMITS PRIOR TO CONSTRUCTION.



THE CITY OF WINNIPEG
PUBLIC WORKS DEPARTMENT

Waverley Street Underpass at CN Mile 3.89 Rivers Sub
Contract 2: Underpass Structures, Railworks,
Roadworks, Land Drainage Sewer, Pumping Station
and Landscaping Works

CITY DRAWING NUMBER
U-239-2016-C2-CT-058

SHEET 058 OF 081

CONSULTANT DRAWING NUMBER
C2-CT-058

WEST ACCESS ROAD - START TO STA.
1+135 (PLAN-PROFILE)

EXISTING	LEGEND-PLAN	PROPOSED	EXISTING	LEGEND-PLAN	PROPOSED	EXISTING	LEGEND-PROFILE	PROPOSED
150 WM	WATERMAIN	150 WM	CONCRETE	CONCRETE	CONCRETE	150 WM	WATERMAIN	150 WM
300 LDS	HYDRANT	300 LDS	ASPHALT	ASPHALT	ASPHALT	300 LDS	LAND DRAINAGE SEWER	300 LDS
250 WWS	VALVE	250 WWS	PLANING	PLANING	PLANING	250 WWS	WASTE WATER SEWER	250 WWS
100 GAS	MANHOLE	100 GAS	SIDEWALK	SIDEWALK	SIDEWALK	100 GAS	HYDRANT	100 GAS
	CATCH BASIN		PAVING STONES	PAVING STONES	PAVING STONES		VALVE	
	CURB INLET		PARTIAL DEPTH REPAIR	PARTIAL DEPTH REPAIR	PARTIAL DEPTH REPAIR		Q PROFILE	
	LAND DRAINAGE SEWER		PROPERTY LINE	PROPERTY LINE	PROPERTY LINE		NORTH/WEST GUTTER	
	WASTE WATER SEWER		DRAINAGE ARROW	DRAINAGE ARROW	DRAINAGE ARROW		SOUTH/EAST GUTTER	
	HYDRO		CURB RAMP (SD-229C)	CURB RAMP (SD-229C)	CURB RAMP (SD-229C)		NORTH/WEST DITCH	
	M.T.S.		DETECTABLE WARNING SURFACE TILE (SD-229AA)	DETECTABLE WARNING SURFACE TILE (SD-229AA)	DETECTABLE WARNING SURFACE TILE (SD-229AA)		SOUTH/EAST DITCH	
	100 GAS							

UNDERGROUND STRUCTURES
SUPPLY: U/G STRUCTURES DATE

LOCATION OF UNDERGROUND STRUCTURES AS SHOWN ARE BASED ON THE BEST INFORMATION AVAILABLE. BUT NO GUARANTEE IS GIVEN THAT ALL EXISTING UTILITIES ARE SHOWN OR THAT THE GIVEN LOCATIONS ARE EXACT. CONFIRMATION OF EXISTENCE AND EXACT LOCATION OF ALL SERVICES MUST BE OBTAINED FROM THE INDIVIDUAL UTILITIES BEFORE PROCEEDING WITH CONSTRUCTION.

B.M. ELEV.	SEE SHEET C2-CT-007 FOR CONTROL POINT INFORMATION		
DESIGNED BY	PMW	CHECKED BY	RTP
DRAWN BY	PMW	APPROVED BY	DBW
HOR. SCALE	1:250	RELEASED FOR CONSTRUCTION	
VERTICAL	1:10	DATE	
0	ISSUED FOR TENDER	17/01/09	DBW
NO.	REVISIONS	DATE	BY

DILLON CONSULTING

ENGINEER'S SEAL
PROVINCE OF MANITOBA
D.B. WIEBE
Member 22480
REGISTERED PROFESSIONAL ENGINEER

CONSULTANT PROJECT NUMBER
16-3353

G:\CAD\163353\Technical\Workbooks\Engineering\Drawings and Figures\Roadworks\Contract\163353-C2-CON-CT-PLAN-PROFILE-WEST-ACCESS-ROAD.dwg