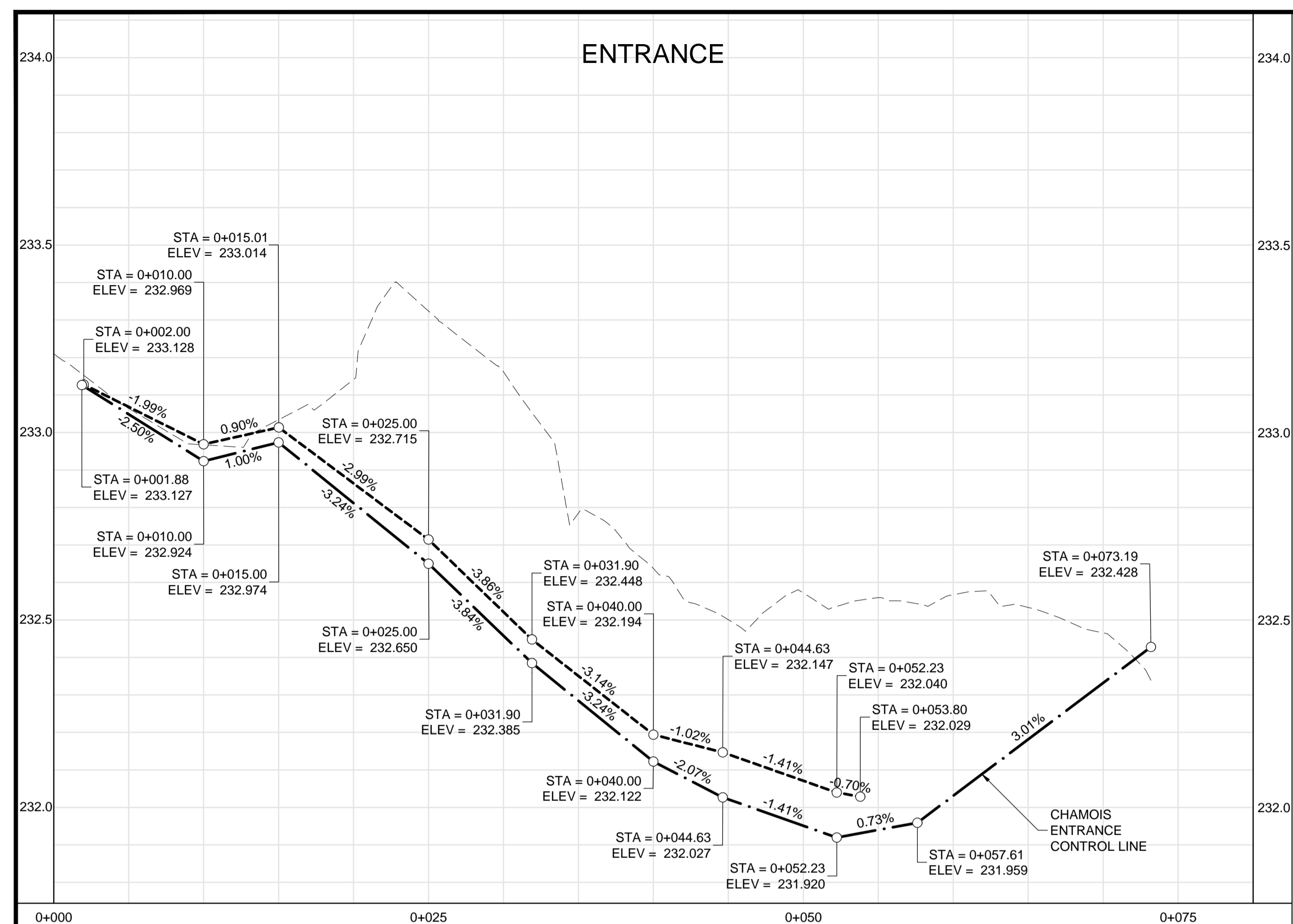
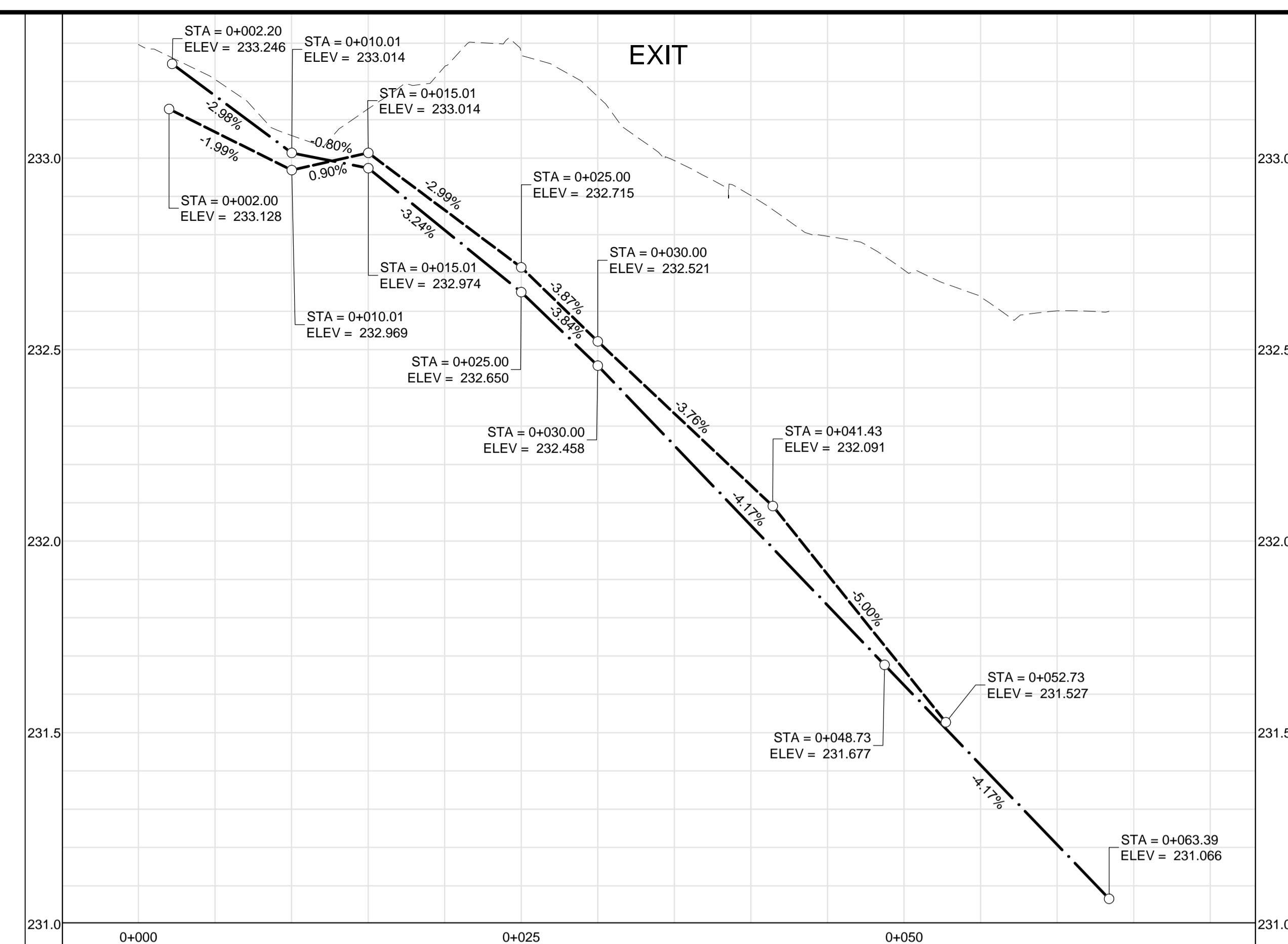


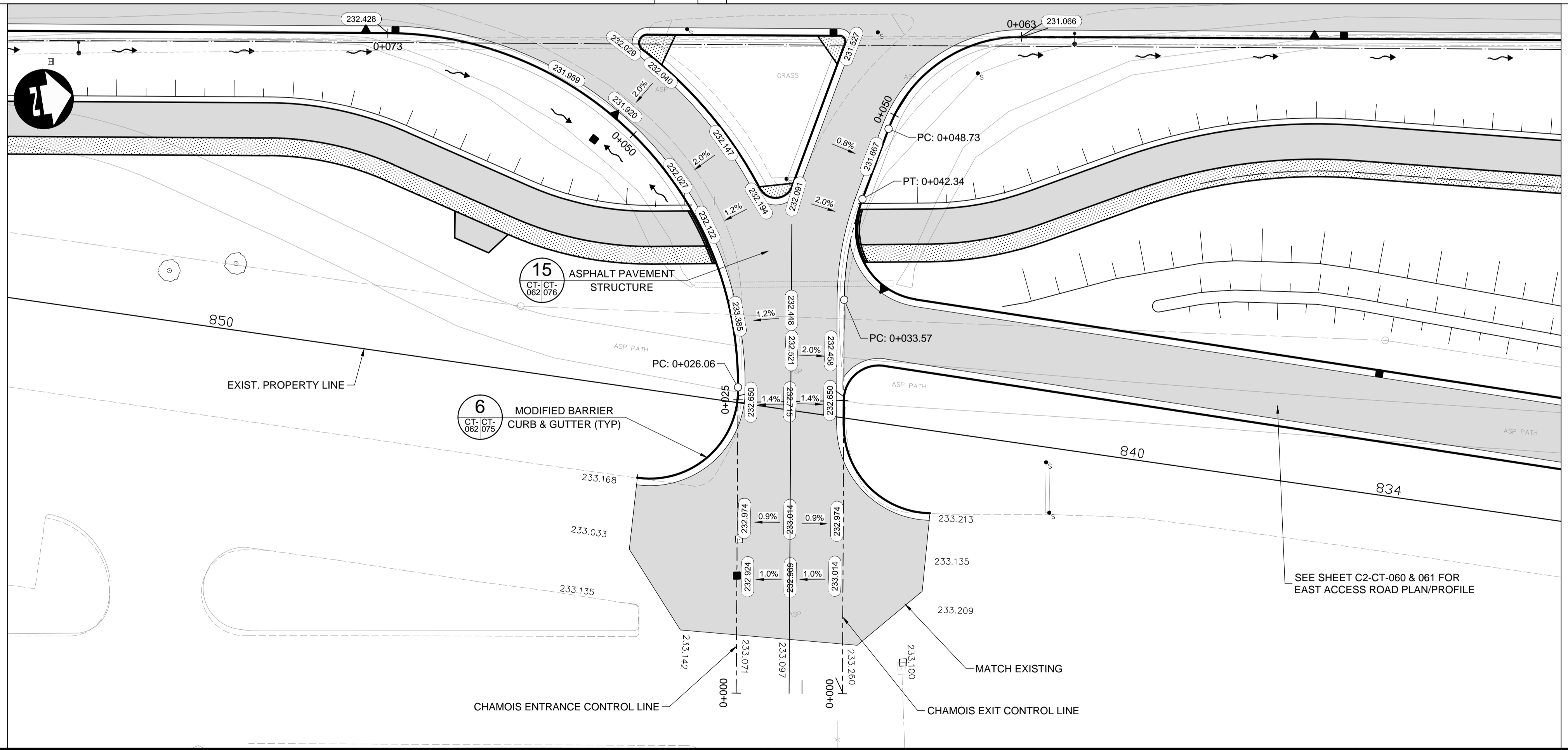
ENTRANCE



EXIT



- CONSTRUCTION NOTES:**
- ISOLATE MISCELLANEOUS ITEMS IN NEW CONCRETE WORKS AS PER SD-228C.
 - LEGAL PLAN AND UNDERGROUND INFORMATION FROM CITY OF WINNIPEG LBIS. CONTRACTOR VERIFY ALL UNDERGROUNDS IN THE FIELD.
 - CONTRACTOR TO TAKE PRECAUTIONARY STEPS TO AVOID DAMAGE FROM CONSTRUCTION ACTIVITIES TO TREES WITHIN THE LIMITS OF CONSTRUCTION.
 - LOCATION OF EXISTING SERVICES TO BE CONFIRMED IN THE FIELD BY THE CONTRACTOR.
 - INSTALL CB LEADS AT MIN. 1.0% SLOPE OR AS DIRECTED BY CONTRACT ADMINISTRATOR.
 - FOR CB LEADS, RIP RAP AND LDS INFORMATION SEE "CU" DRAWINGS.
 - CONTRACTOR SHALL CONFIRM EXISTING LEAD INVERT ELEVATIONS PRIOR TO INSTALLATION.



METRIC

WHOLE NUMBERS INDICATE MILLIMETRES
DECIMALIZED NUMBERS INDICATE METRES

WARNING

- IF POWER EQUIPMENT OR EXPLOSIVES ARE TO BE USED FOR EXCAVATION ON THIS PROJECT THE CONTRACTOR MUST:
- NOTIFY THE GAS COMPANY OF THE PROPOSED LOCATION OF EXCAVATION.
 - TAKE PRECAUTION TO AVOID DAMAGE TO GAS COMPANY INSTALLATIONS SEE PROVINCIAL REGULATION 210/72 FOR DETAILS.
 - OBTAIN EXCAVATION PERMITS PRIOR TO CONSTRUCTION.

APEGM
Certificate of Authorization
Dillon Consulting Limited (MB)
No. 1789 Date: 17/01/09

150 WM	WATERMAIN	150 WM	CONCRETE	150 WM	WATERMAIN	150 WM	WATERMAIN
300 LDS	HYDRANT	300 LDS	ASPHALT	300 LDS	LAND DRAINAGE SEWER	300 LDS	LAND DRAINAGE SEWER
250 WWS	VALVE	250 WWS	PLANING	250 WWS	WASTE WATER SEWER	250 WWS	WASTE WATER SEWER
100 GAS	MANHOLE	100 GAS	SIDEWALK	+	HYDRANT	+	HYDRANT
300 LDS	CATCH BASIN	300 LDS	PAVING STONES	+	Q PROFILE	+	Q PROFILE
250 WWS	CURB INLET	250 WWS	PARTIAL DEPTH REPAIR	+	NORTH/WEST GUTTER	+	NORTH/WEST GUTTER
100 GAS	LAND DRAINAGE SEWER	100 GAS	PROPERTY LINE	+	SOUTH/EAST GUTTER	+	SOUTH/EAST GUTTER
250 WWS	WASTE WATER SEWER	250 WWS	DRAINAGE ARROW	+	NORTH/WEST DITCH	+	NORTH/WEST DITCH
HYDRO	HYDRO	HYDRO	CURB RAMP (SD-229C)	+	SOUTH/EAST DITCH	+	SOUTH/EAST DITCH
M.T.S.	M.T.S.	M.T.S.	DETECTABLE WARNING	+			
100 GAS	GAS	100 GAS	SURFACE TILE (SD-229AA)	+			
EXISTING	LEGEND-PLAN	PROPOSED	EXISTING	LEGEND-PLAN	PROPOSED	EXISTING	LEGEND-PROFILE

UNDERGROUND STRUCTURES		B.M. ELEV.	
SUPV. U/G STRUCTURES	DATE	SEE SHEET C2-CT-007 FOR CONTROL POINT INFORMATION	
LOCATION OF UNDERGROUND STRUCTURES AS SHOWN ARE BASED ON THE BEST INFORMATION AVAILABLE. BUT NO GUARANTEE IS GIVEN THAT ALL EXISTING UTILITIES ARE SHOWN OR THAT THE GIVEN LOCATIONS ARE EXACT. CONFIRMATION OF EXISTENCE AND EXACT LOCATION OF ALL SERVICES MUST BE OBTAINED FROM THE INDIVIDUAL UTILITIES BEFORE PROCEEDING WITH CONSTRUCTION.			

DESIGNED BY	PMW	CHECKED BY	RTP
DRAWN BY	PMW	APPROVED BY	DBW
HOR. SCALE	1:250	RELEASED FOR CONSTRUCTION	
VERTICAL	1:10	DATE	
ISSUED FOR TENDER	17/01/09	DATE	
NO. REVISIONS		BY	

ENGINEER'S SEAL
D.B. WIEBE
Member 22480
REGISTERED PROFESSIONAL ENGINEER
CONSULTANT PROJECT NUMBER
16-3353

THE CITY OF WINNIPEG
PUBLIC WORKS DEPARTMENT
Waverley Street Underpass at CN Mile 3.89 Rivers Sub
Contract 2: Underpass Structures, Railworks,
Roadworks, Land Drainage Sewer, Pumping Station
and Landscaping Works
CITY DRAWING NUMBER
U-239-2016-C2-CT-062
SHEET
062 OF 081
CONSULTANT DRAWING NUMBER
C2-CT-062
COMMERCIAL APPROACHES
(PLAN-PROFILE)

G:\CAD\163353\Technical\Workspaces\Engineering\Drawings and Figures\Roadworks\Contract\163353-C2-CON-CT-PLAN-PROFILE-CHAMOIS.dwg