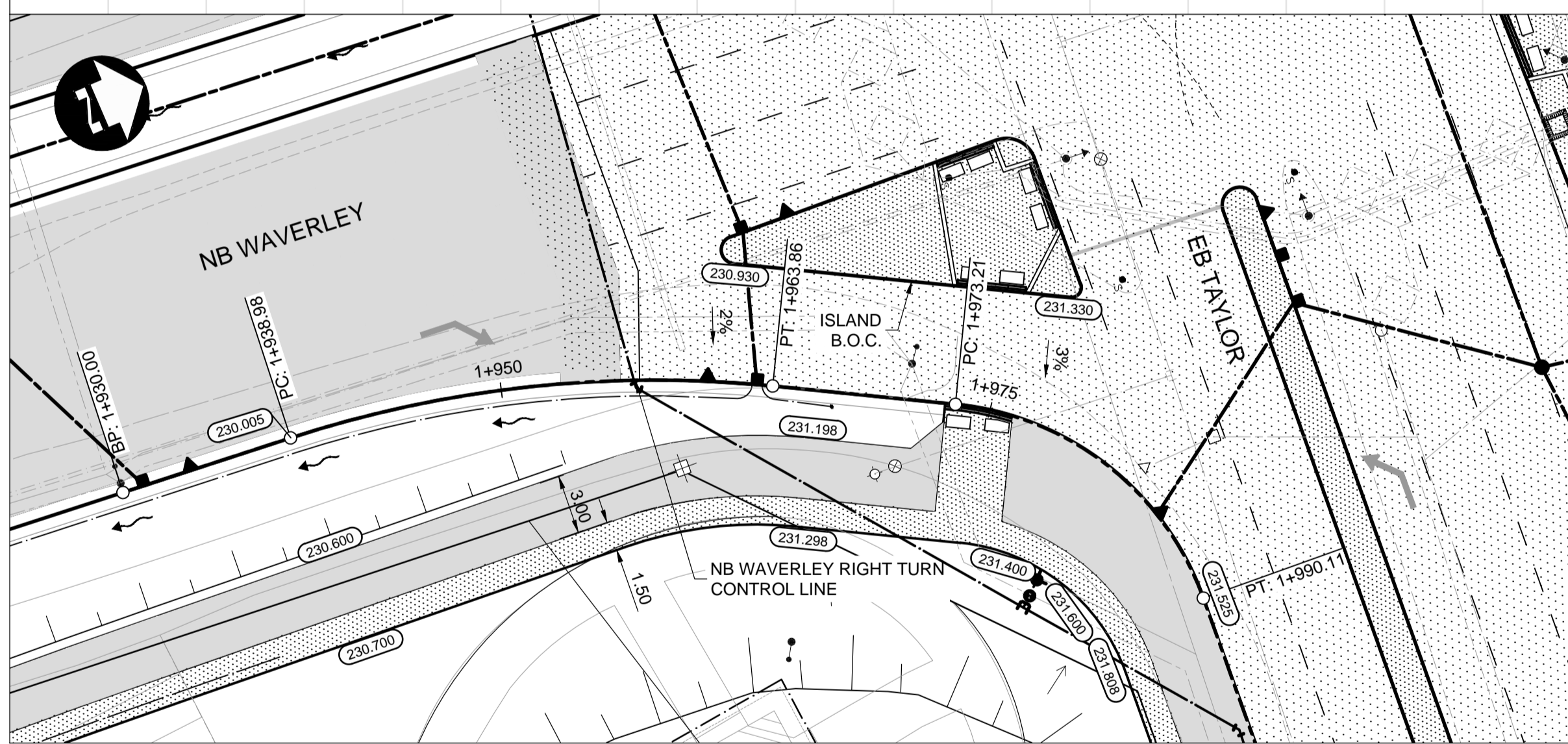
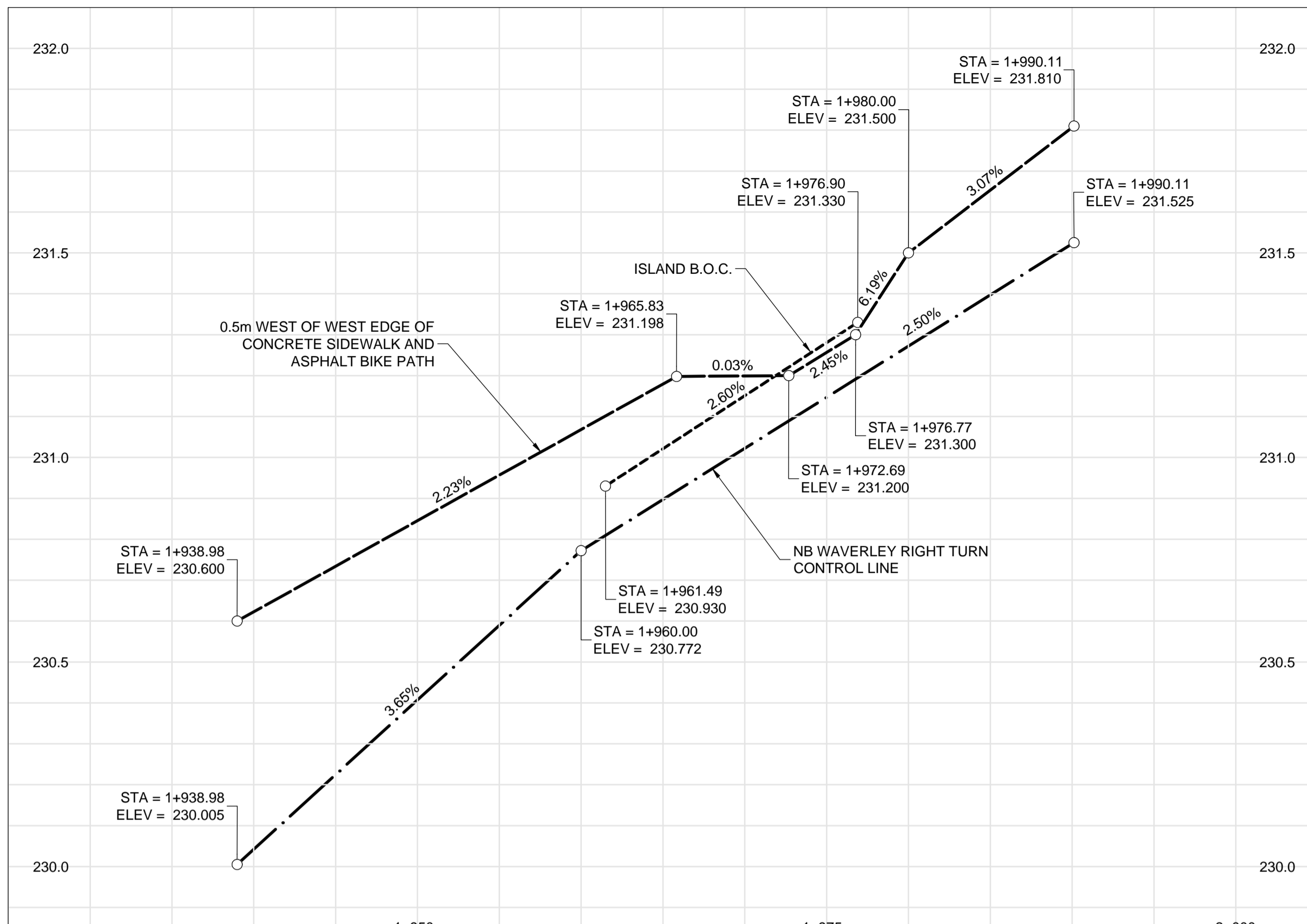


EB TAYLOR RIGHT TURN TO SB WAVERLEY



NB WAVERLEY RIGHT TURN TO EB TAYLOR

CONSTRUCTION NOTES:

- ISOLATE MISCELLANEOUS ITEMS IN NEW CONCRETE WORKS AS PER SD-228C.
- LEGAL PLAN AND UNDERGROUND INFORMATION FROM CITY OF WINNIPEG LBIS. CONTRACTOR VERIFY ALL UNDERGROUNDS IN THE FIELD.
- CONTRACTOR TO TAKE PRECAUTIONARY STEPS TO AVOID DAMAGE FROM CONSTRUCTION ACTIVITIES TO TREES WITHIN THE LIMITS OF CONSTRUCTION.
- LOCATION OF EXISTING SERVICES TO BE CONFIRMED IN THE FIELD BY THE CONTRACTOR.
- INSTALL CB LEADS AT MIN. 1.0% SLOPE OR AS DIRECTED BY CONTRACT ADMINISTRATOR.
- FOR CB LEADS, RIP RAP AND LDS INFORMATION SEE "CU" DRAWINGS.
- CONTRACTOR SHALL CONFIRM EXISTING LEAD INVERT ELEVATIONS PRIOR TO INSTALLATION.

METRIC

WHOLE NUMBERS INDICATE MILLIMETRES
DECIMALIZED NUMBERS INDICATE METRES

WARNING

IF POWER EQUIPMENT OR EXPLOSIVES ARE TO BE USED FOR EXCAVATION ON THIS PROJECT THE CONTRACTOR MUST:

- NOTIFY THE GAS COMPANY OF THE PROPOSED LOCATION OF EXCAVATION.
- TAKE PRECAUTION TO AVOID DAMAGE TO GAS COMPANY INSTALLATIONS SEE PROVINCIAL REGULATION 210/72 FOR DETAILS.
- OBTAIN EXCAVATION PERMITS PRIOR TO CONSTRUCTION.



G:\CAD\163353\Technical\Workspc\Engineering\Drawings and Figures\Roadworks\Contract\163353-C2-CON-CT-PLAN-PROFILE-TURN-LANES.dwg

EXISTING	LEGEND-PLAN	PROPOSED	EXISTING	LEGEND-PLAN	PROPOSED	EXISTING	LEGEND-PROFILE	PROPOSED
	WATERMAIN			CONCRETE			WATERMAIN	
	HYDRANT			ASPHALT			LAND DRAINAGE SEWER	
	VALVE			PLANING			WASTE WATER SEWER	
	MANHOLE			SIDEWALK			HYDRANT	
	CATCH BASIN			PAVING STONES			VALVE	
	CURB INLET			PARTIAL DEPTH REPAIR			PROFILE	
	LAND DRAINAGE SEWER			PROPERTY LINE			NORTH/WEST GUTTER	
	WASTE WATER SEWER			DRAINAGE ARROW			SOUTH/EAST GUTTER	
	HYDRO			CURB RAMP (SD-229C)			NORTH/WEST DITCH	
	M.T.S.			DETECTABLE WARNING			SOUTH/EAST DITCH	
	GAS			SURFACE TILE (SD-229AA)				

UNDERGROUND STRUCTURES		B.M. ELEV.	
SUPV. U/G STRUCTURES	DATE	SEE SHEET C2-CT-007 FOR CONTROL POINT INFORMATION	

DESIGNED BY		CHECKED BY	
DRAWN BY		APPROVED BY	
HOR. SCALE		RELEASED FOR CONSTRUCTION	
VERTICAL		DATE	
PMW	RTP		
PMW	DBW		
1:250			
1:10			

ENGINEER'S SEAL	
CONSULTANT PROJECT NUMBER	
D.B. WIEBE Member 22480 REGISTERED PROFESSIONAL ENGINEER	16-3353

THE CITY OF WINNIPEG PUBLIC WORKS DEPARTMENT	
Waverley Street Underpass at CN Mile 3.89 Rivers Sub Contract 2: Underpass Structures, Railworks, Roadworks, Land Drainage Sewer, Pumping Station and Landscaping Works	
CITY DRAWING NUMBER U-239-2016-C2-CT-064	SHEET OF 064 OF 081
WAVERLEY & TAYLOR TURN LANES (PLAN-PROFILE)	
CONSULTANT DRAWING NUMBER C2-CT-064	