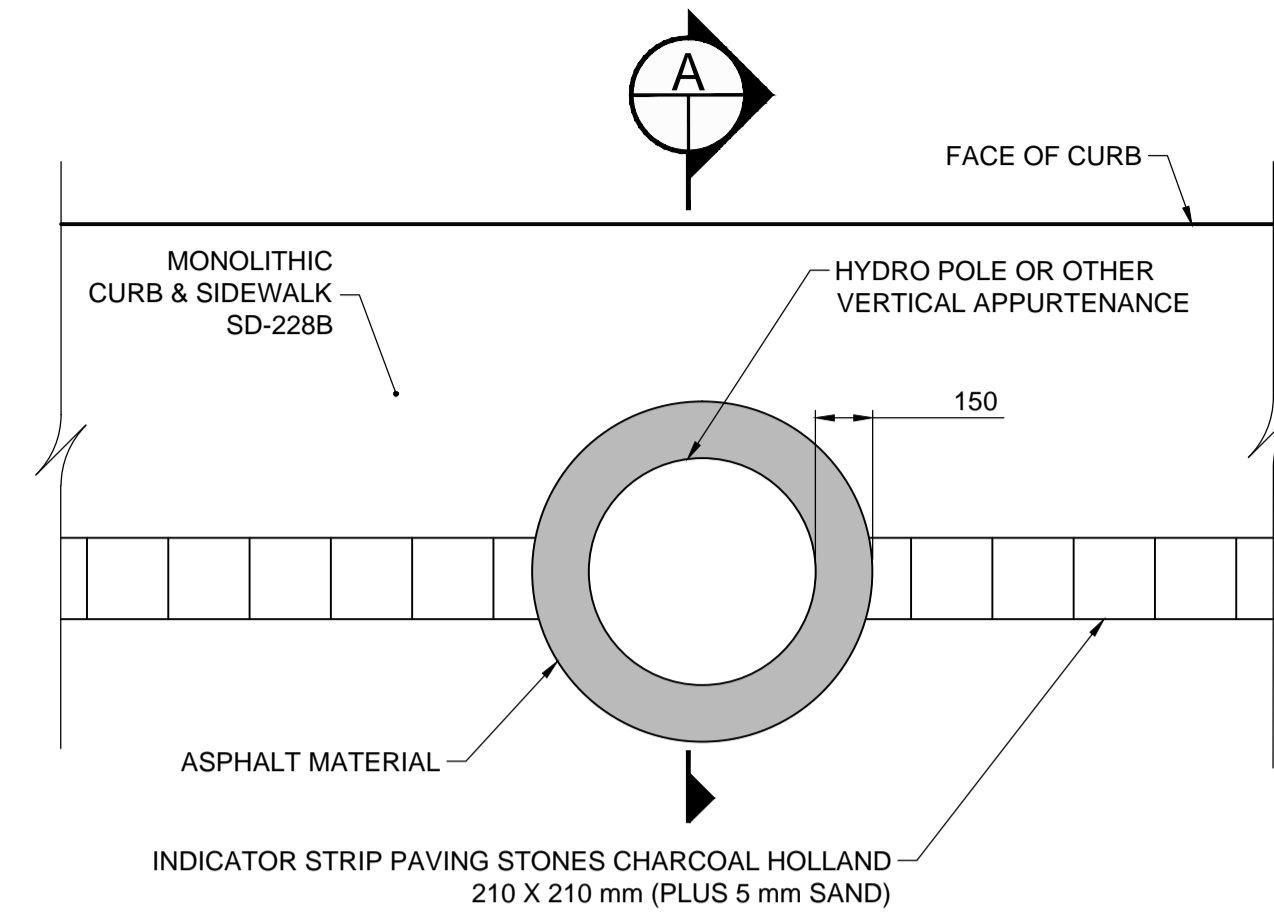
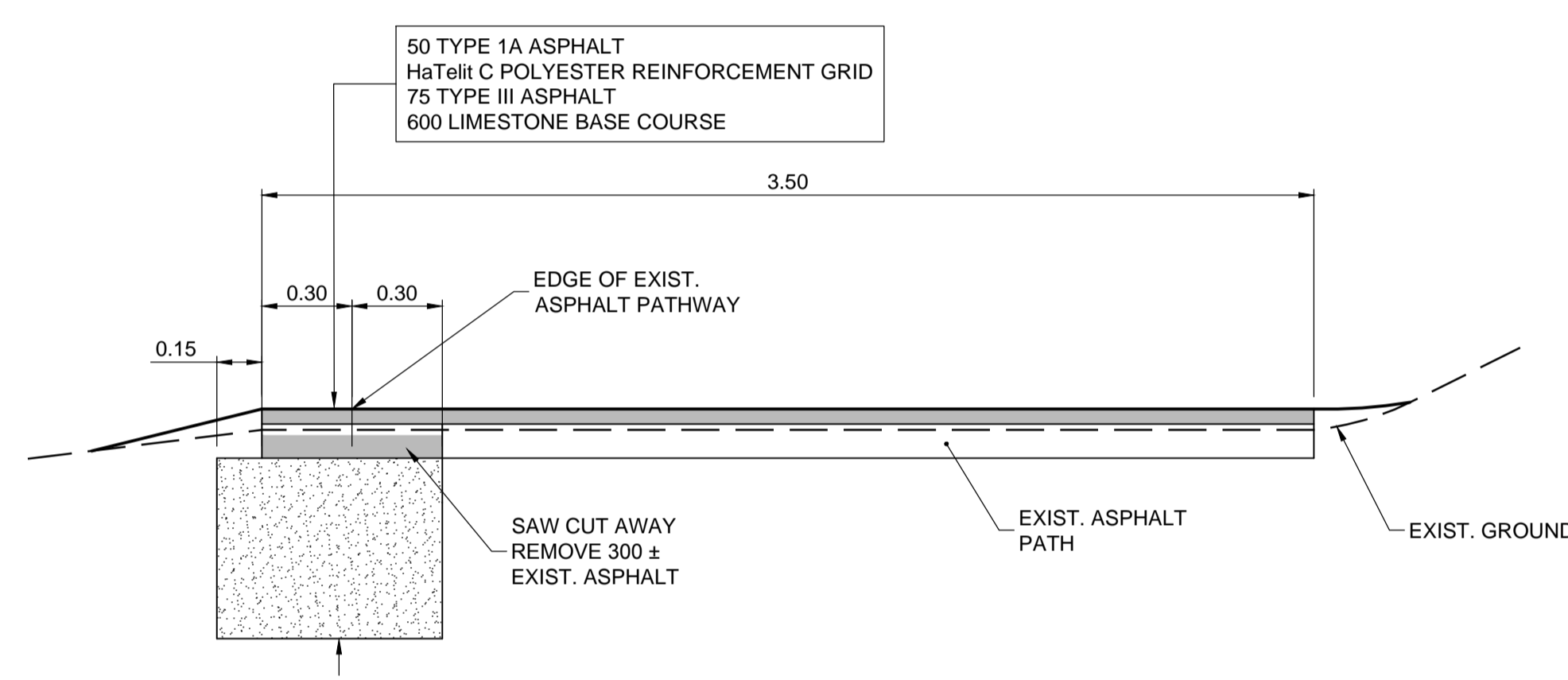


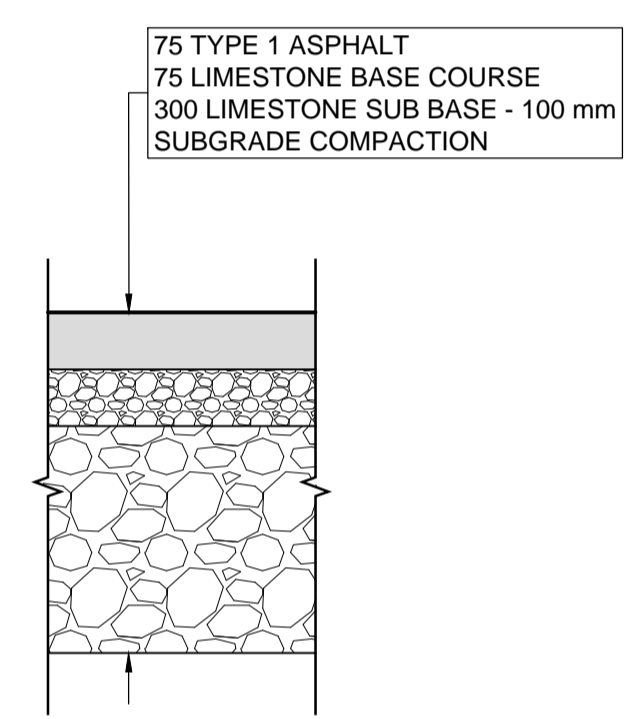
12 AT GRADE CONCRETE BUS PAD
SCALE: 1:10



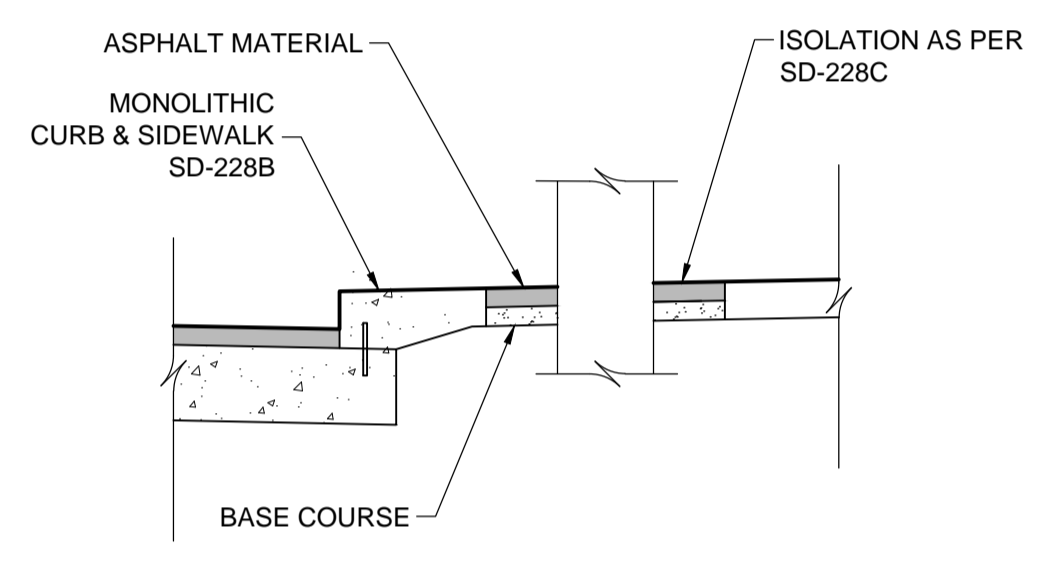
16 ISOLATIONS IN INDICATOR STRIP ALIGNMENT
SCALE: 1:20



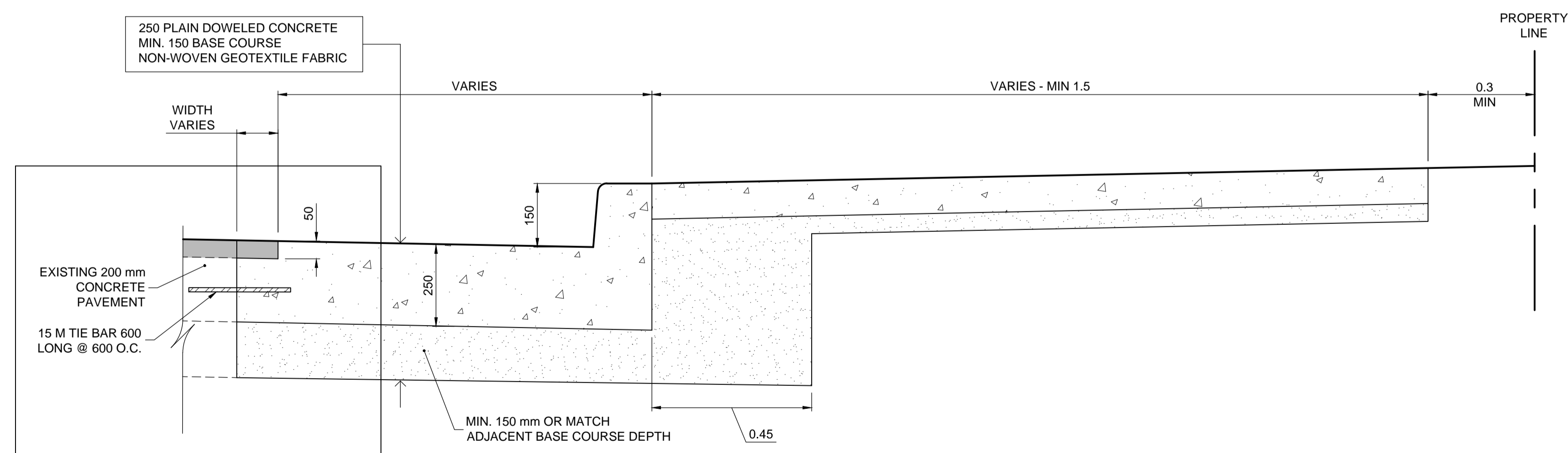
13 WIDENING EXIST. MULTI-USE PATH
SCALE: 1:20



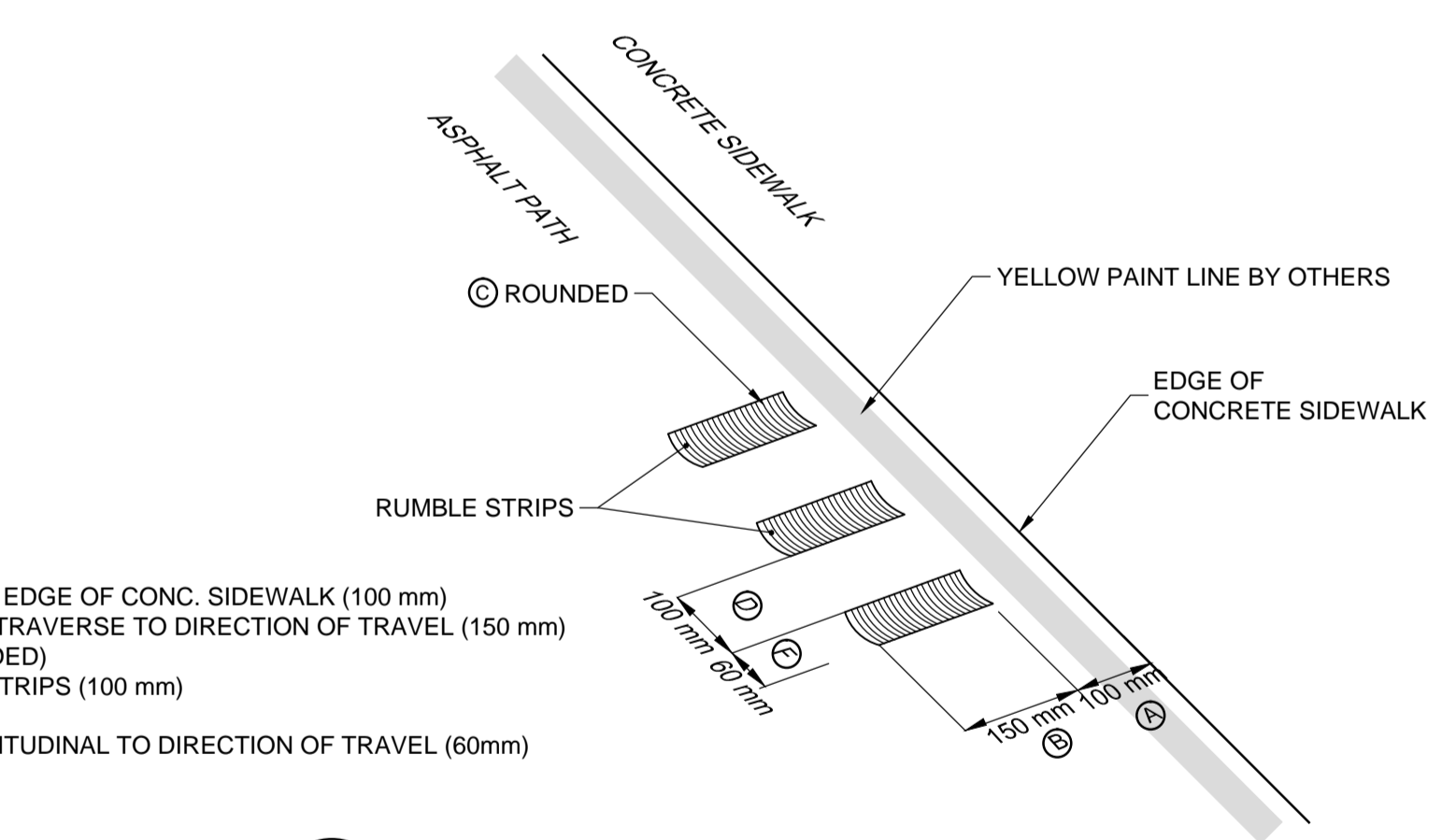
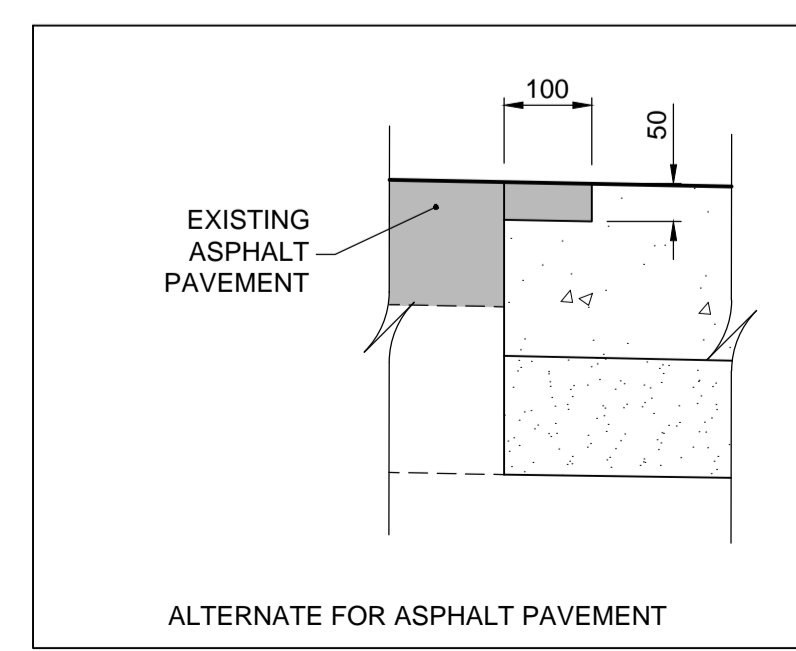
15 ASPHALT PAVEMENT STRUCTURE
SCALE: 1:10



17 ISOLATIONS IN INDICATOR STRIP ALIGNMENT
SCALE: 1:20



14 AT GRADE CONCRETE BUS PAD
SCALE: 1:10



- A - DISTANCE FROM THE EDGE OF CONC. SIDEWALK (100 mm)
- B - WIDTH OF PATTERN (TRAVERSE TO DIRECTION OF TRAVEL (150 mm))
- C - STRIP SHAPE (ROUNDED)
- D - SPACING BETWEEN STRIPS (100 mm)
- E - STRIP DEPTH (6 mm)
- F - STRIP LENGTH (LONGITUDINAL TO DIRECTION OF TRAVEL (60 mm))

17 ASPHALT RUMBLE STRIP
SCALE: NTS



UNDERGROUND STRUCTURES		B.M. ELEV.	SEE SHEET C2-CT-007 FOR CONTROL POINT INFORMATION	DESIGNED BY		CHECKED BY		ENGINEER'S SEAL		THE CITY OF WINNIPEG PUBLIC WORKS DEPARTMENT	
SUPV. U/G STRUCTURES	DATE			RTP	DBW				Waverley Street Underpass at CN Mile 3.89 Rivers Sub CONTRACT 2: UNDERPASS STRUCTURES, RAILWORKS, ROADWORKS, LAND DRAINAGE SEWER, PUMPING STATION AND LANDSCAPING WORKS		CITY DRAWING NUMBER U-239-2016-C2-CT-076
				RD	DBW				SHEET OF 076 OF 081		
									CONSULTANT DRAWING NUMBER C2-CT-076		
									DETAILS (2 OF 4)		
LOCATION OF UNDERGROUND STRUCTURES AS SHOWN ARE BASED ON THE BEST INFORMATION AVAILABLE, BUT NO GUARANTEE IS GIVEN THAT ALL EXISTING UTILITIES ARE SHOWN OR THAT THE GIVEN LOCATIONS ARE EXACT. CONFIRMATION OF EXISTENCE AND EXACT LOCATION OF ALL SERVICES MUST BE OBTAINED FROM THE INDIVIDUAL UTILITIES BEFORE PROCEEDING WITH CONSTRUCTION.				0	ISSUED FOR TENDER	17/01/09	DBW	CONSULTANT PROJECT NUMBER 16-3353		CITY DRAWING NUMBER U-239-2016-C2-CT-076	
				NO.	REVISIONS	DATE	BY	DATE		CONSULTANT DRAWING NUMBER C2-CT-076	

G:\CAD\163353\Technical\Workspaces\Engineering\Drawings and Figures\Roadworks\Contract\163353-C2-CON-CT-DETAILS.dwg