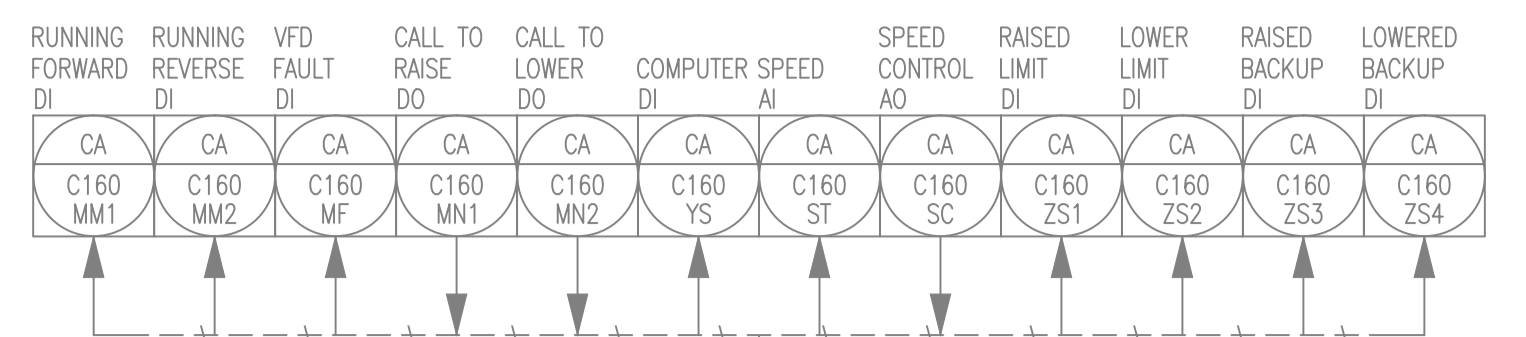
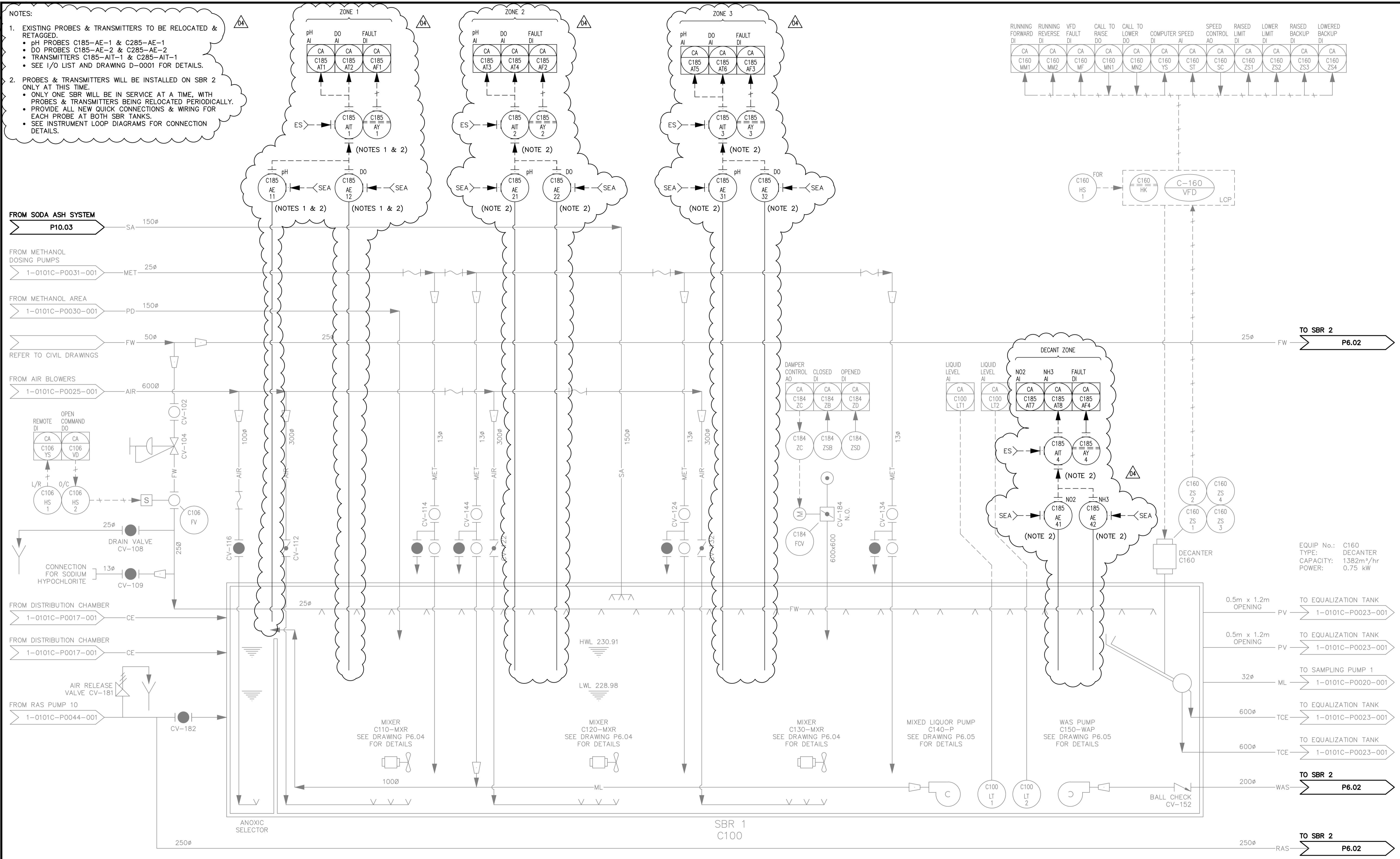


NOTES:

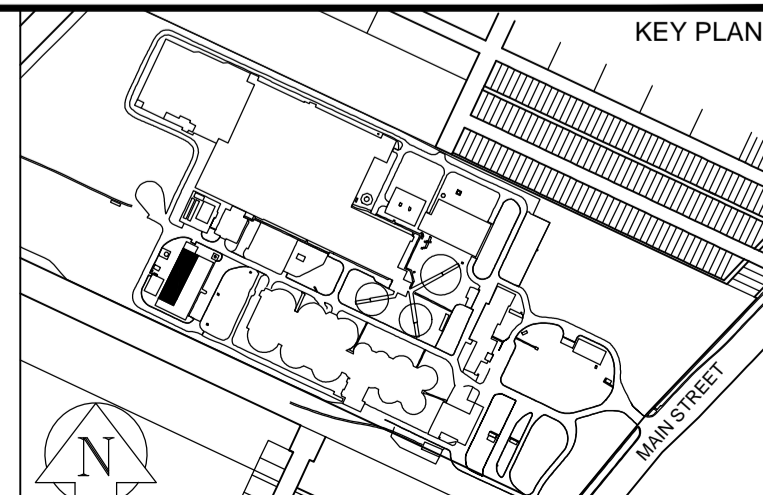
- EXISTING PROBES & TRANSMITTERS TO BE RELOCATED & RETAGGED.
 - pH PROBES C185-AE-1 & C285-AE-1
 - DO PROBES C185-AE-2 & C285-AE-2
 - TRANSMITTERS C185-AIT-1 & C285-AIT-1
 - SEE I/O LIST AND DRAWING D-0001 FOR DETAILS.
- PROBES & TRANSMITTERS WILL BE INSTALLED ON SBR 2 ONLY AT THIS TIME.
 - ONLY ONE SBR WILL BE IN SERVICE AT A TIME, WITH PROBES & TRANSMITTERS BEING RELOCATED PERIODICALLY.
 - PROVIDE ALL NEW QUICK CONNECTIONS & WIRING FOR EACH PROBE AT BOTH SBR TANKS.
 - SEE INSTRUMENT LOOP DIAGRAMS FOR CONNECTION DETAILS.



EQUIP No.: C160
 TYPE: DECANTER
 CAPACITY: 1382m³/hr
 POWER: 0.75 kW

NOTICE:
 AS-CONSTRUCTED DIMENSIONS, MEASUREMENTS AND OTHER DETAILS CONTAINED IN THIS RECORD DRAWING HAVE BEEN OBTAINED BY AECOM CANADA LTD. ("AECOM") FROM VARIOUS SOURCES. SUCH INFORMATION REPRESENTS THE BEST INFORMATION AVAILABLE TO AECOM AT THE TIME OF PREPARATION OF THIS RECORD DRAWING. AECOM DOES NOT IN ANY WAY REPRESENT OR WARRANT THAT SUCH INFORMATION IS ACCURATE AND ASSUMES NO RESPONSIBILITY FOR ANY ERRORS OR OMISSIONS CONTAINED THEREIN.

REVISION 04 CHANGES	
DESIGNED BY: NK	CHECKED BY: KJS
DRAWN BY: SRG	APPROVED BY: KJS
DATE: 16/06/23	RELEASED FOR CONSTR. DATE: -

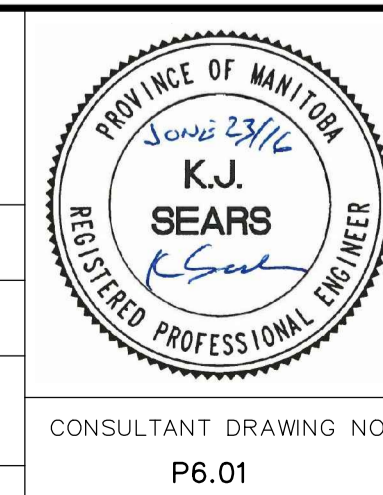


APEGM
 Certificate of Authorization
 AECOM Canada Ltd.
 No. 4671 Date: June 23/16

NO.	REVISIONS	DATE	BY
04	ISSUED FOR TENDER: BID OP 547-2016	16/06/23	SRG
03	AS-CONSTRUCTED DRAWING	09/02/19	DEP
02	ISSUED FOR DCS PROGRAMMING	07/12/17	GLG
01	ISSUED FOR CONSTRUCTION	06/08/30	GLG
00	ISSUED FOR TENDER	06/05/15	SRP

EarthTech
 A Tyco International Ltd. Company

DESIGNED BY: YL/CD	CHECKED BY: SB/PS
DRAWN BY: SRP	APPROVED BY:
SCALE: NONE	RELEASED FOR CONSTRUCTION BY:
DATE: 2006/01/16	DATE:



THE CITY OF WINNIPEG
 WATER AND WASTE DEPARTMENT
 ENGINEERING DIVISION

NEWPCC CENTRATE NUTRIENT TREATMENT
 NITROGEN REMOVAL FACILITY

PROCESS SBR 1
 PROCESS & INSTRUMENTATION DIAGRAM

CITY FILE NUMBER: P6.01
 SHEET OF: 1-0101C-P0018-001-04
 CITY DRAWING NUMBER: 1-0101C-P0018-001-04