

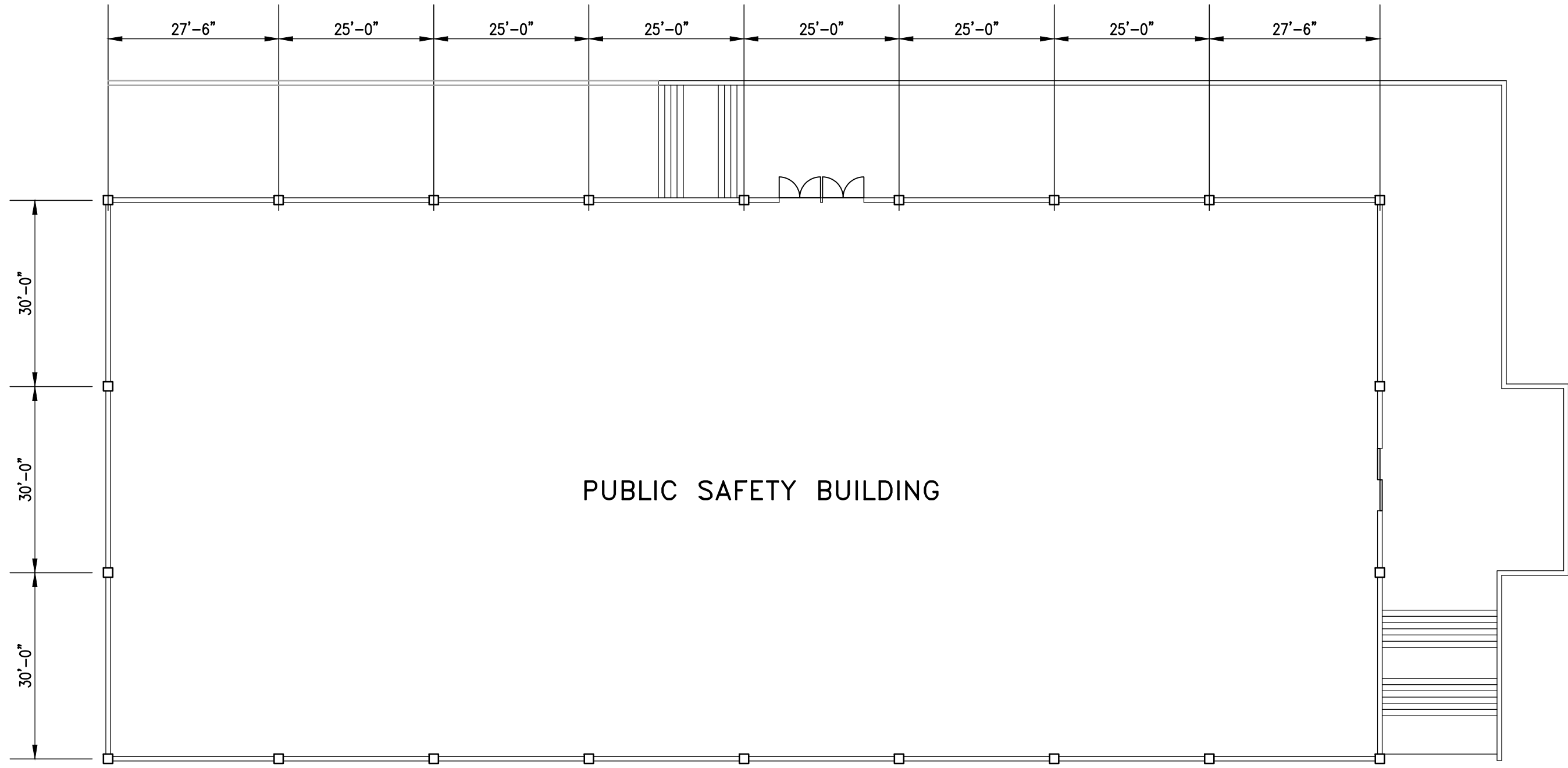
FILE NAME:


DATE:

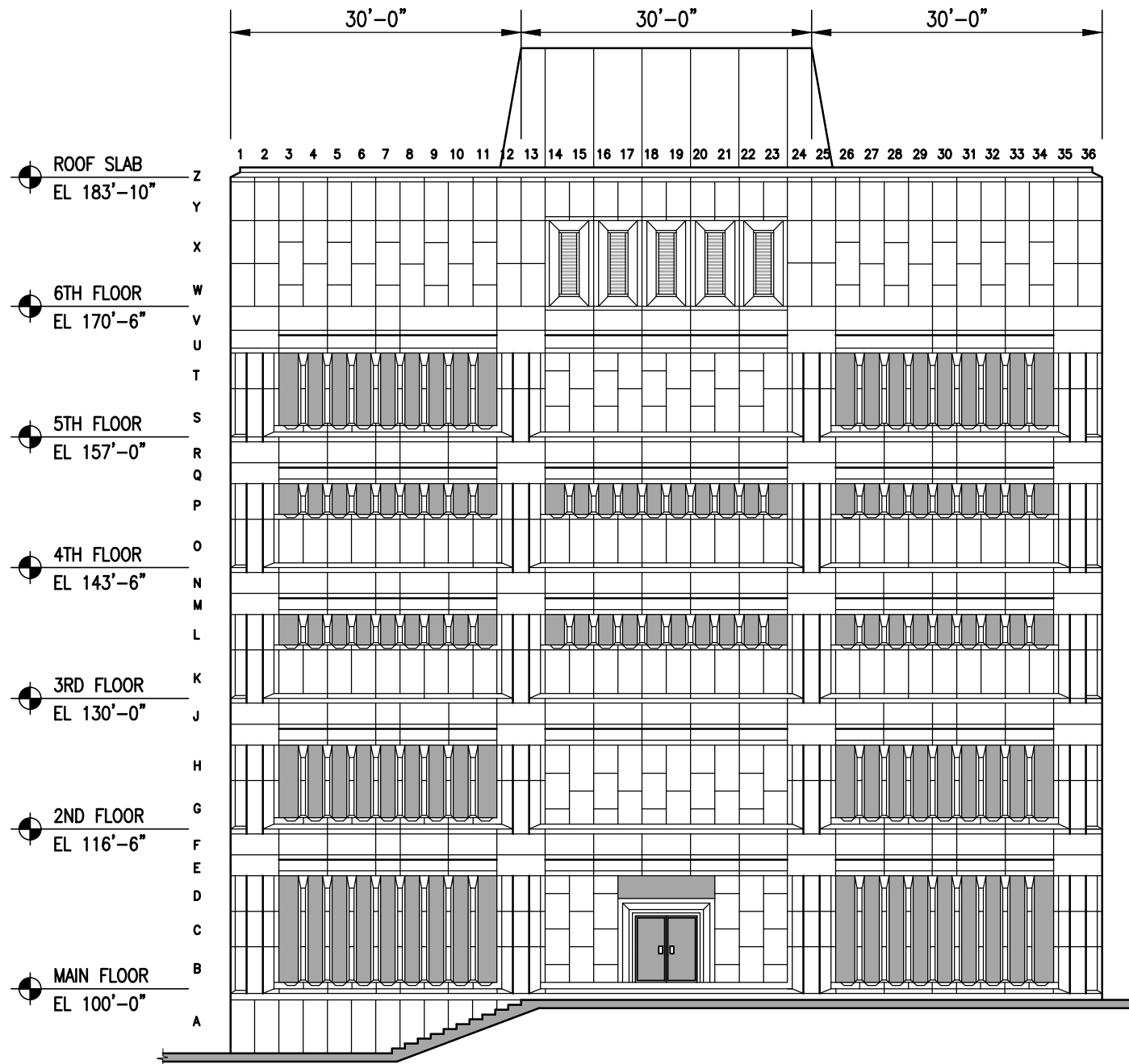
DESCRIPTION:

PROJECT No.:

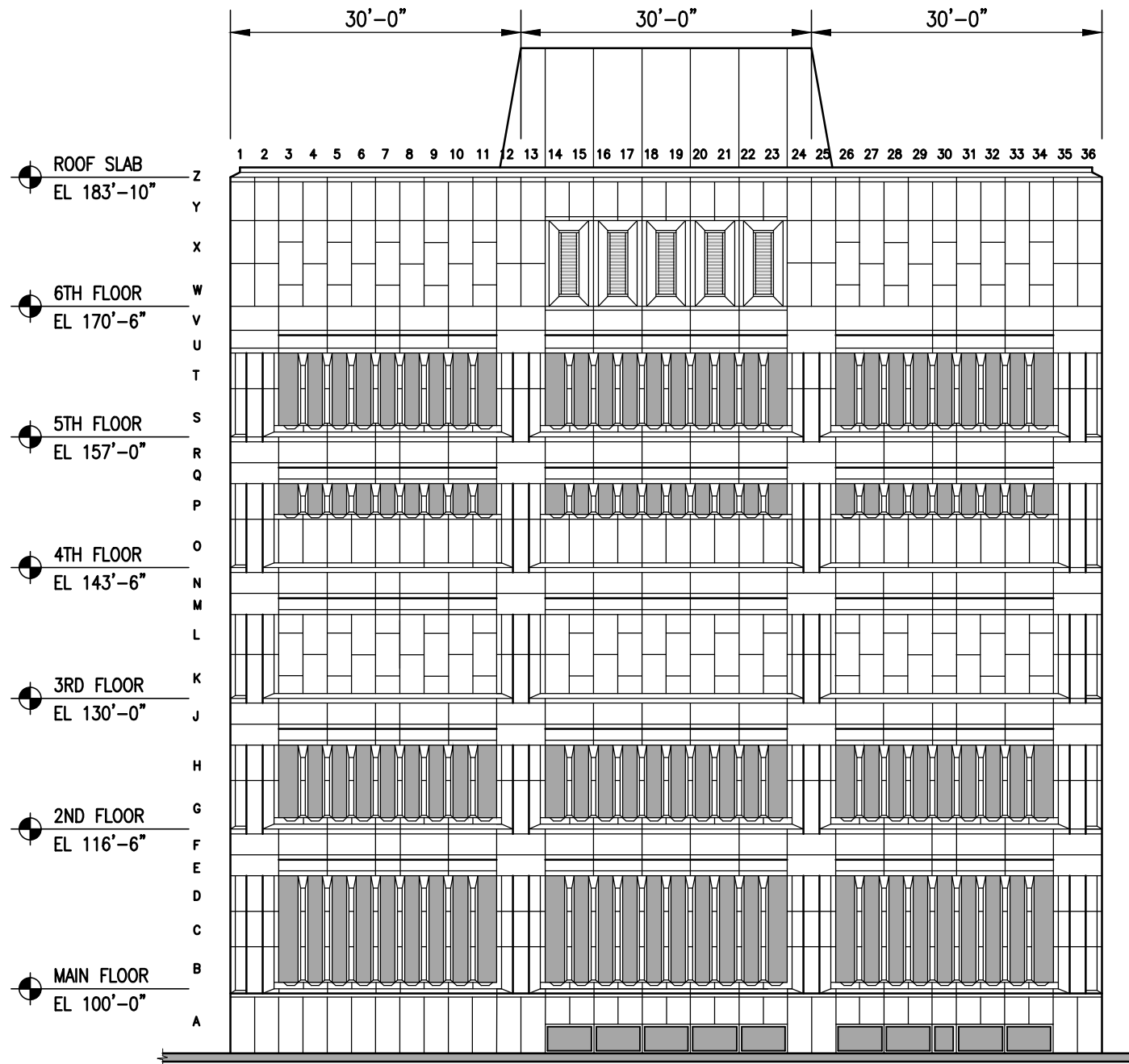
ADDRESS:



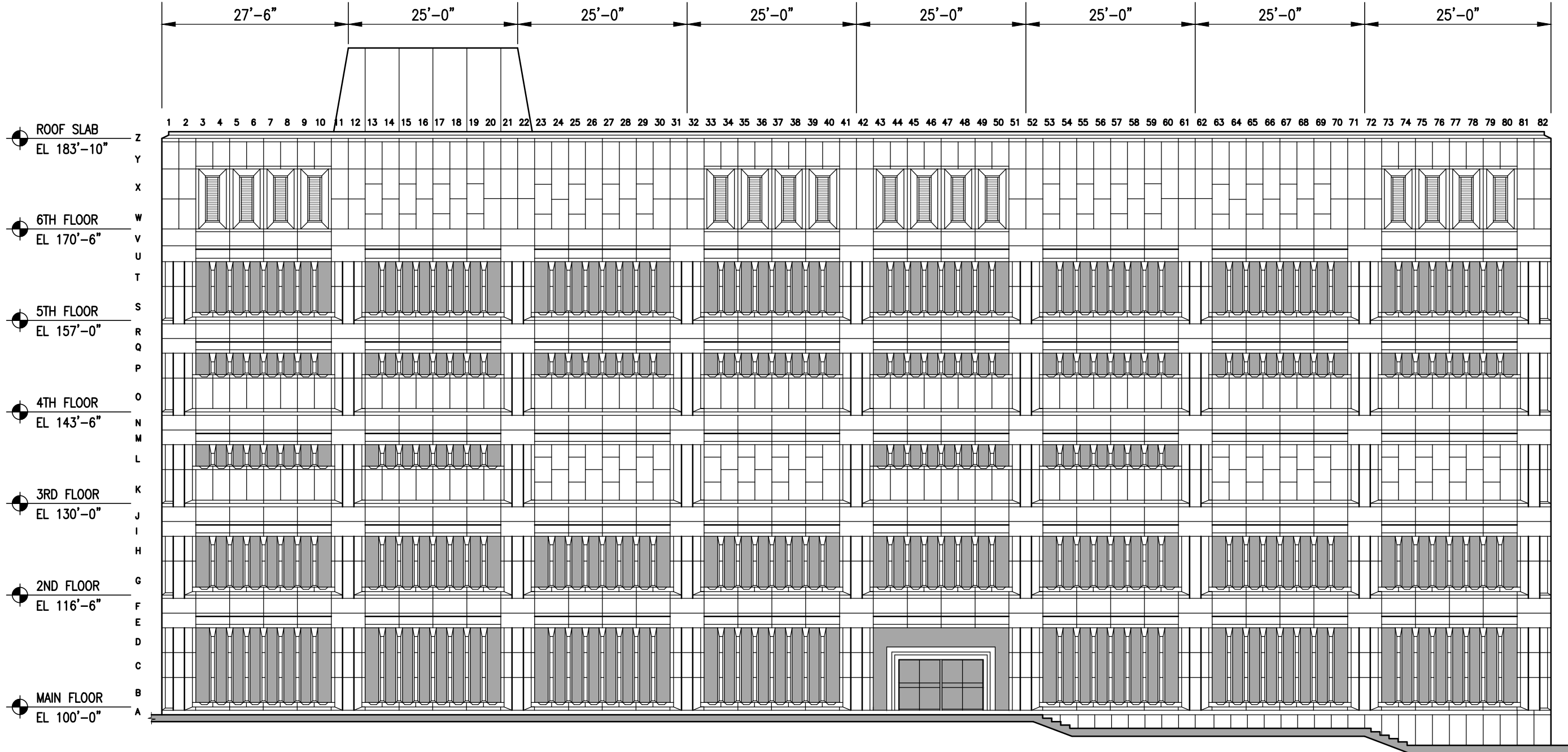
 **BUILDING PLAN**
1/16" = 1'-0"



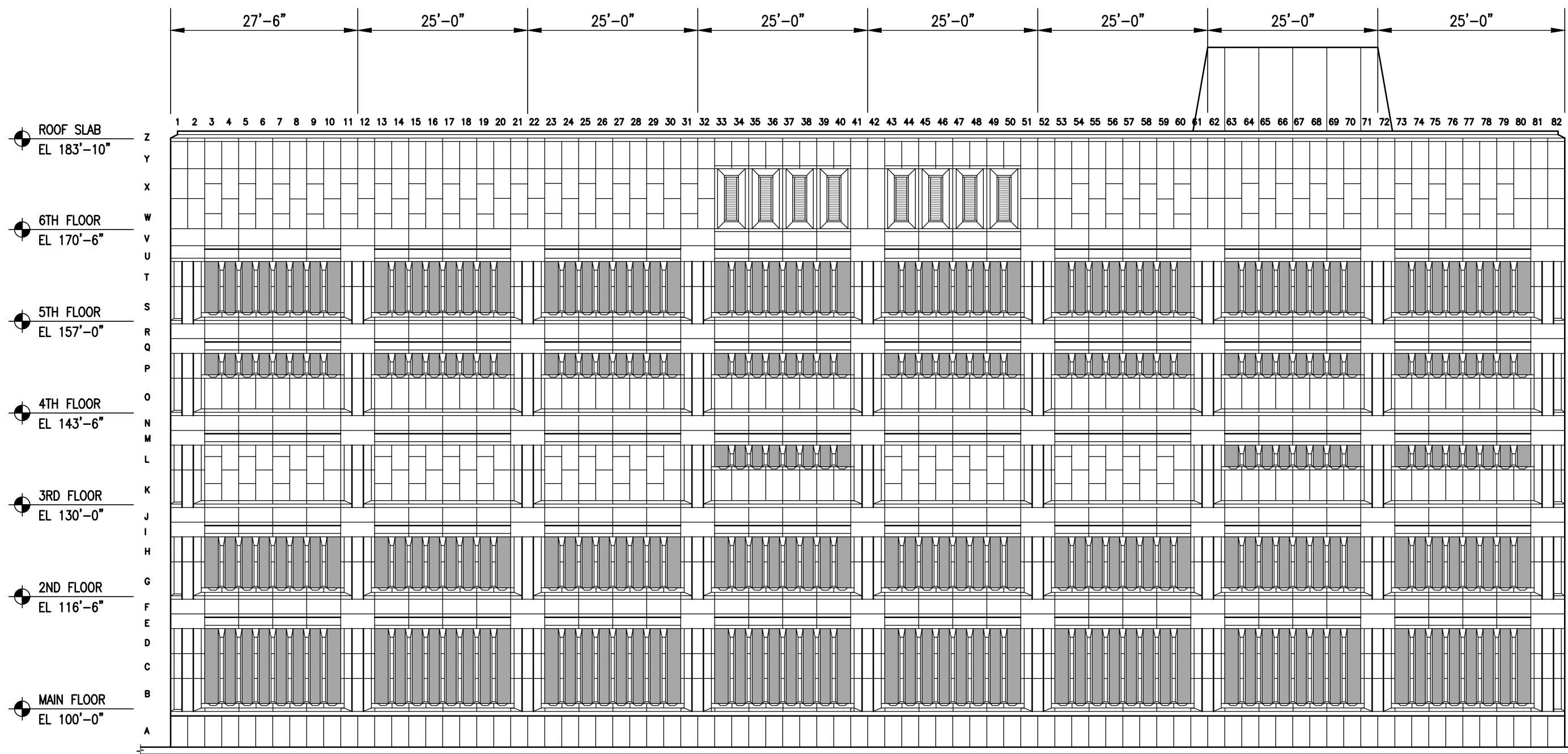
NORTH ELEVATION
1/16" = 1'-0"



SOUTH ELEVATION
1/16" = 1'-0"



WEST ELEVATION
1/16" = 1'-0"



EAST ELEVATION
1/16" = 1'-0"


NOTES :

300-275 Carlton Street
Winnipeg, Manitoba R3C 5R6
T 204. 943. 7501
F 204. 943. 7507
2016-0645


**Crosier Kilgour
& Partners Ltd.**
CONSULTING STRUCTURAL ENGINEERS

NO.	REVISION/DESCRIPTION	BY	DATE
1	ISSUED FOR BID	SWW	6/21

DRAWN BY	JSR	CHECKED BY	SWW	APPROVED	JAW
DATE	2016.06.21	USER	APPROVAL		

 **CITY OF WINNIPEG**
**PLANNING, PROPERTY &
DEVELOPMENT DEPARTMENT**
CIVIC ACCOMMODATIONS DIVISION
300 - 65 GARRY ST. R3C 4K4

PROJECT
PUBLIC SAFETY BUILDING
151 PRINCESS STREET
2014 CLADDING STABILIZATION
WINNIPEG, MANITOBA

SHEET TITLE
PLAN VIEW & ELEVATION

SCALE	PROJECT NO.	SHEET NO.
AS NOTED	2016-0645	SK-1

DRAWING SHEET SIZE: 24x36 PLOT 1:1