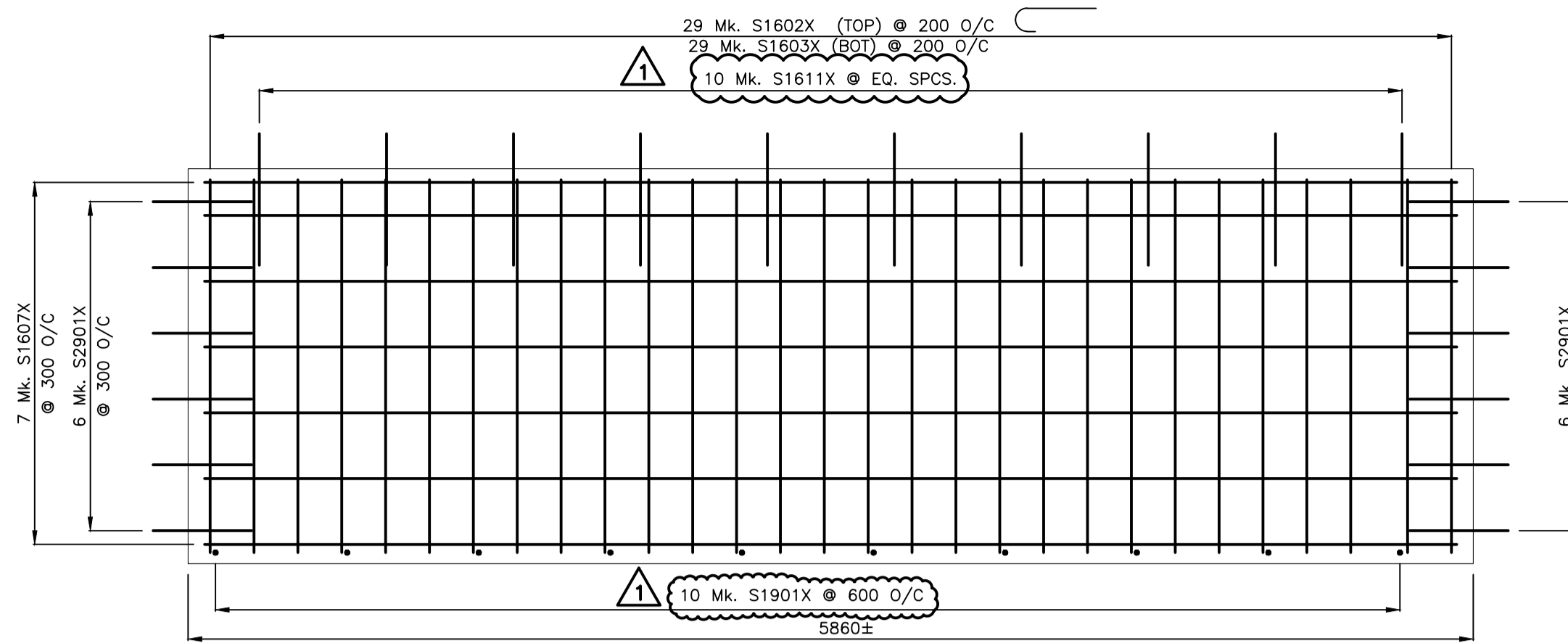
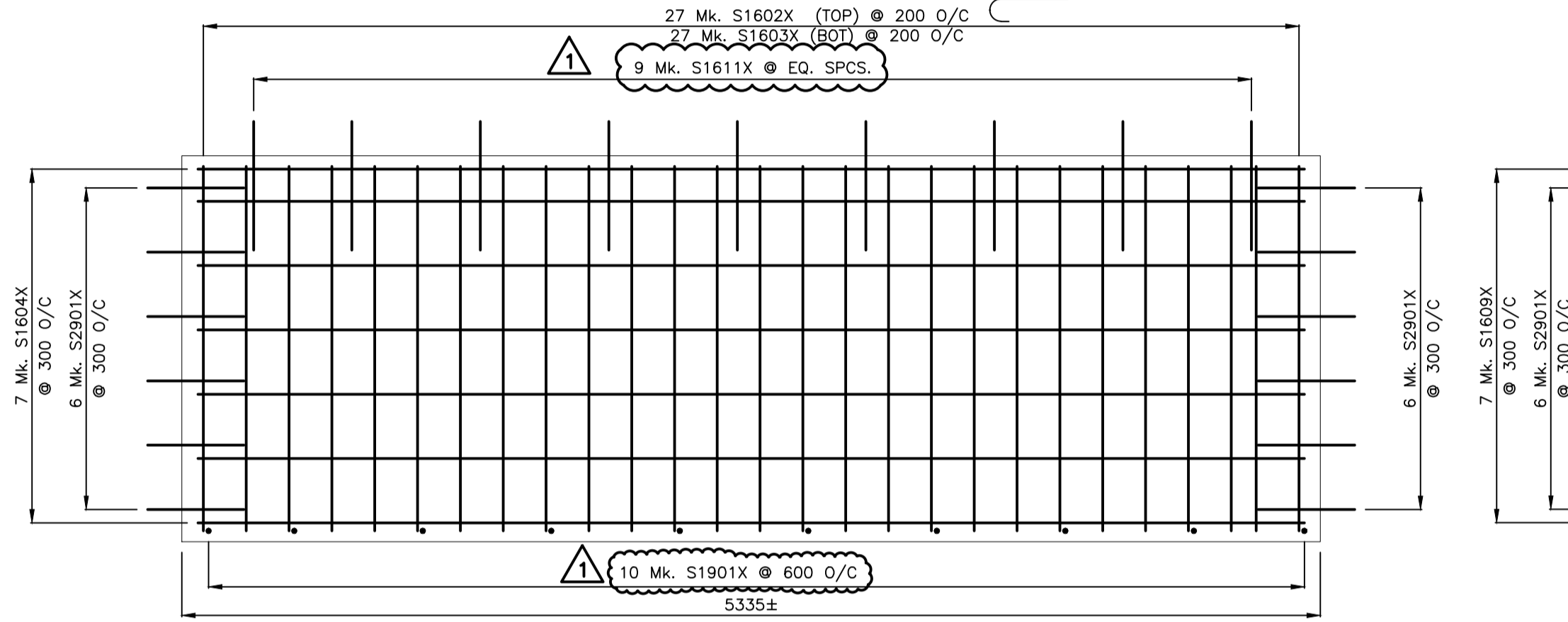


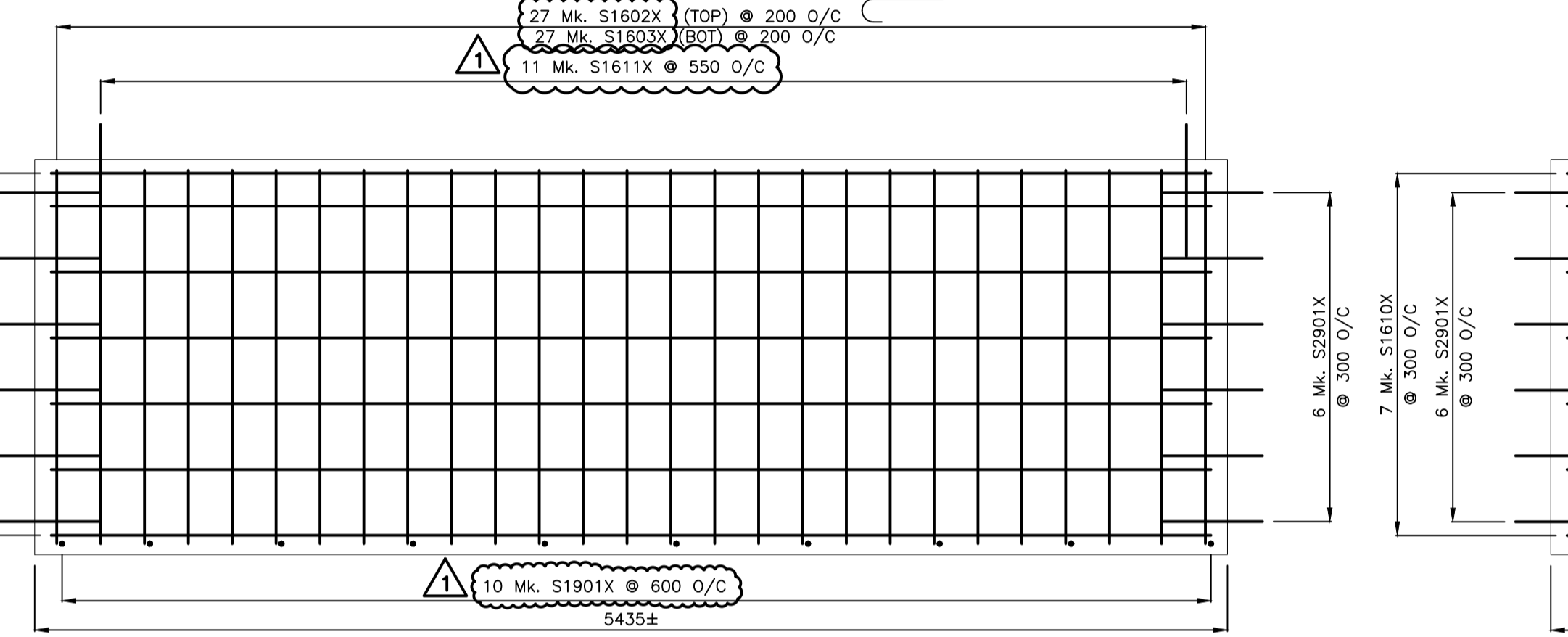
1 DETAIL - TYPE 'A'  
51/53 1:25



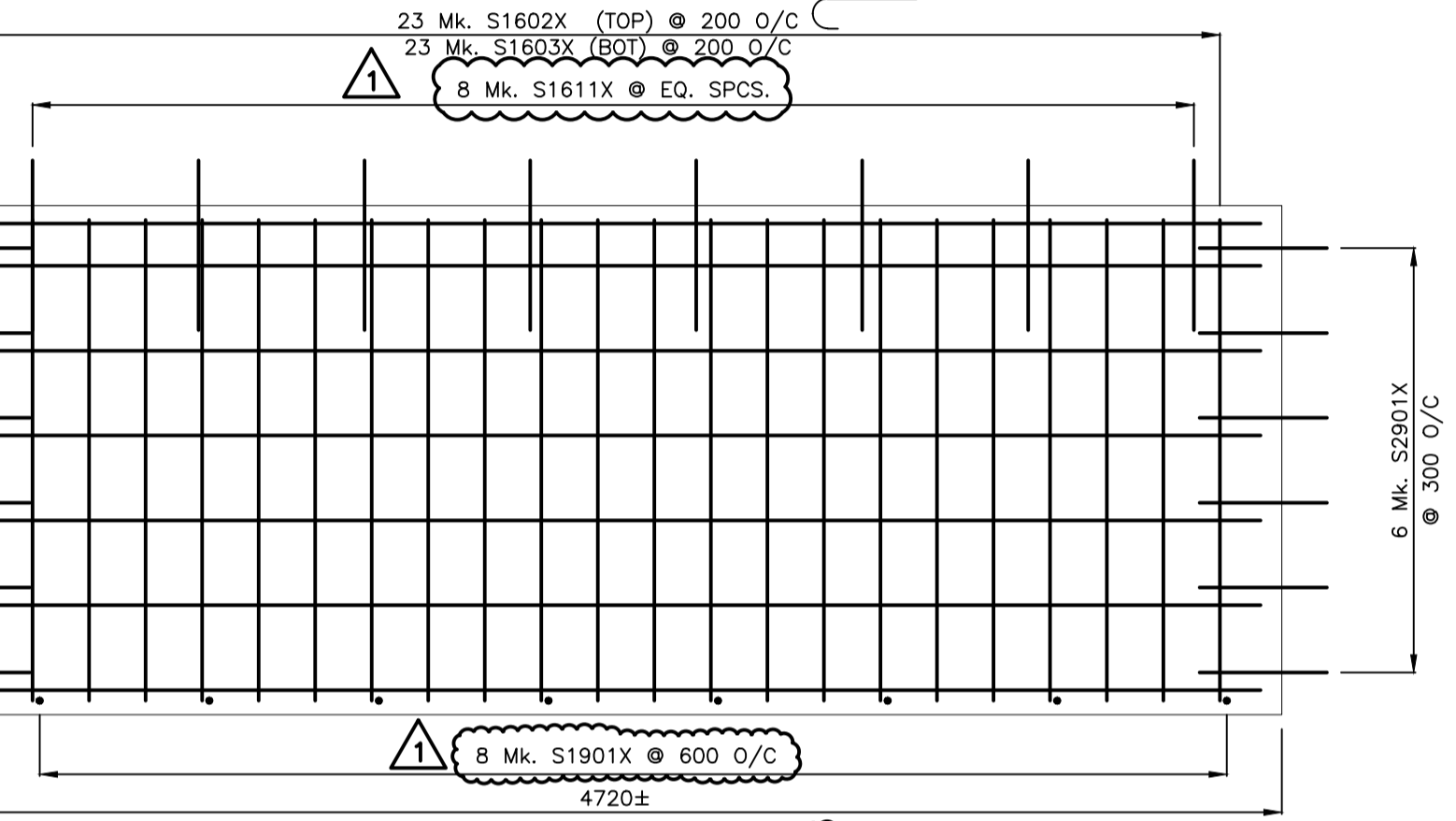
5 DETAIL - TYPE 'E'  
52/53 1:25



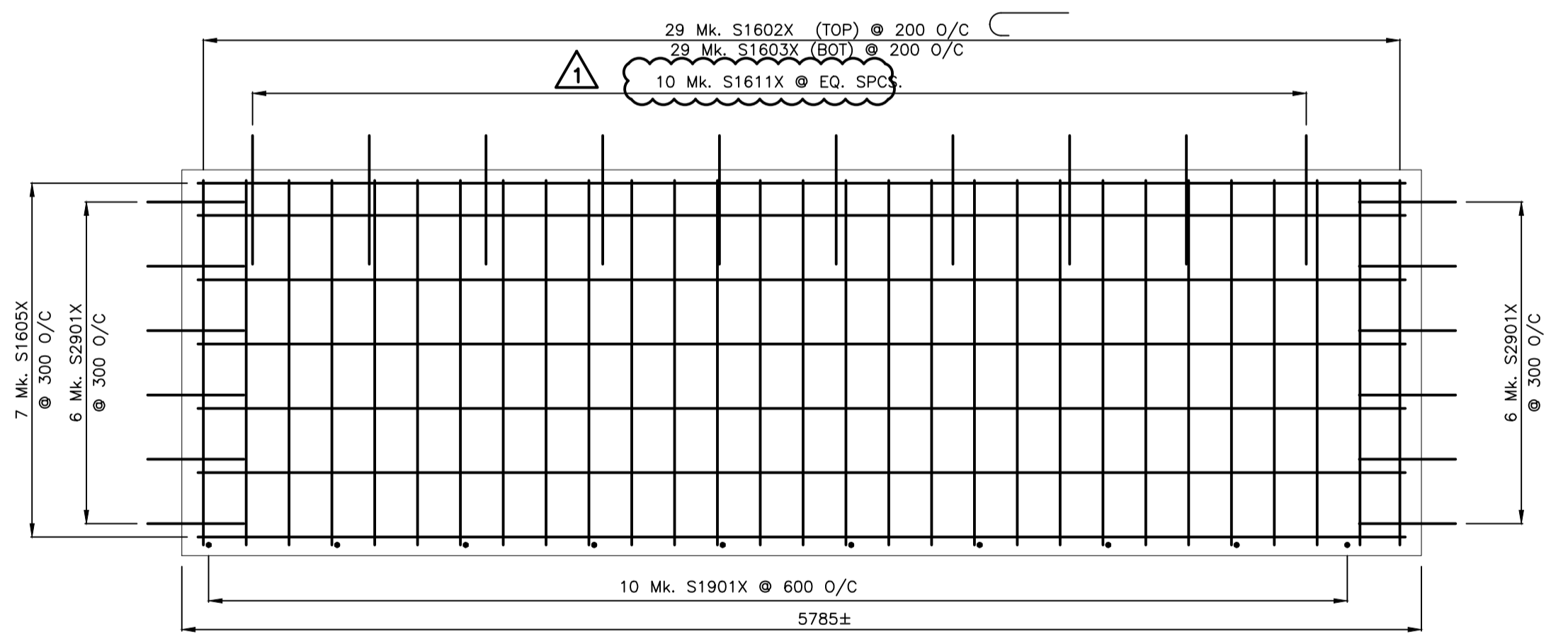
2 DETAIL - TYPE 'B'  
51/53 1:25



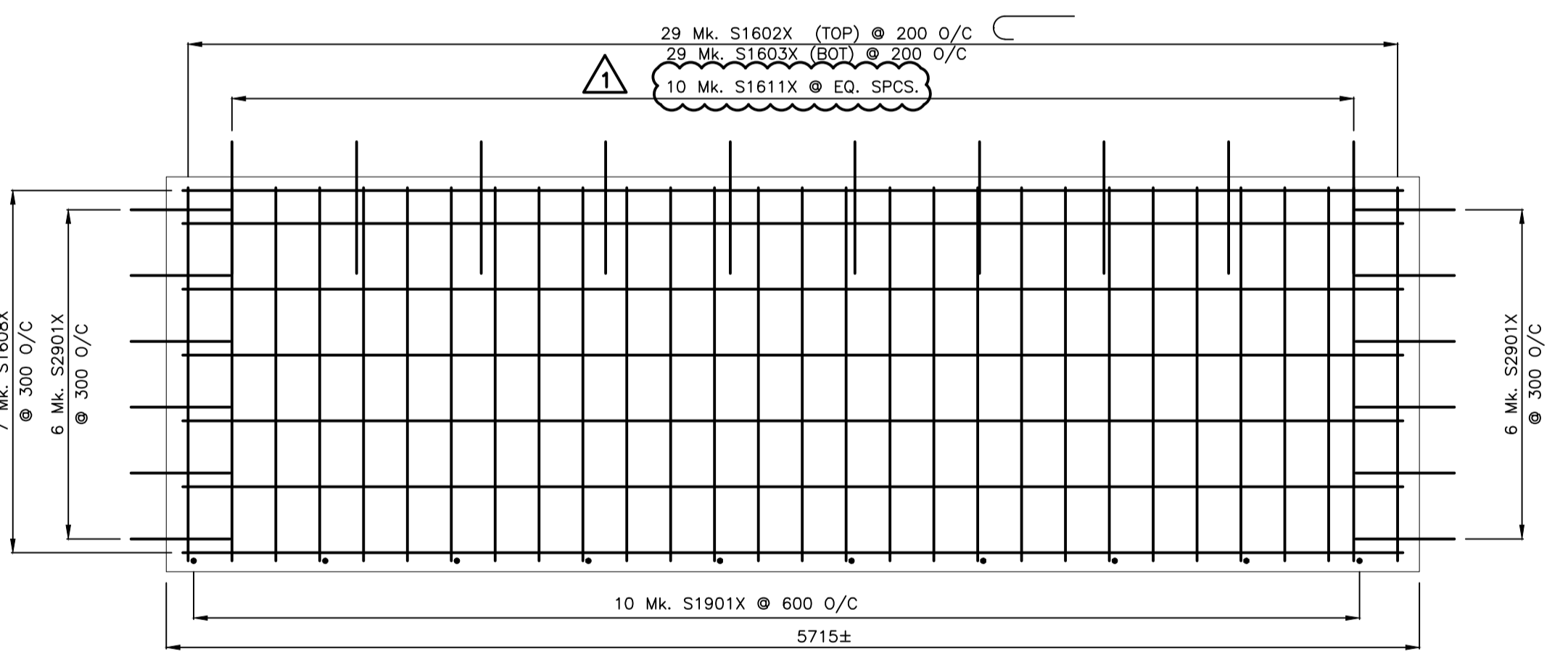
7 DETAIL - TYPE 'G'  
52/53 1:25



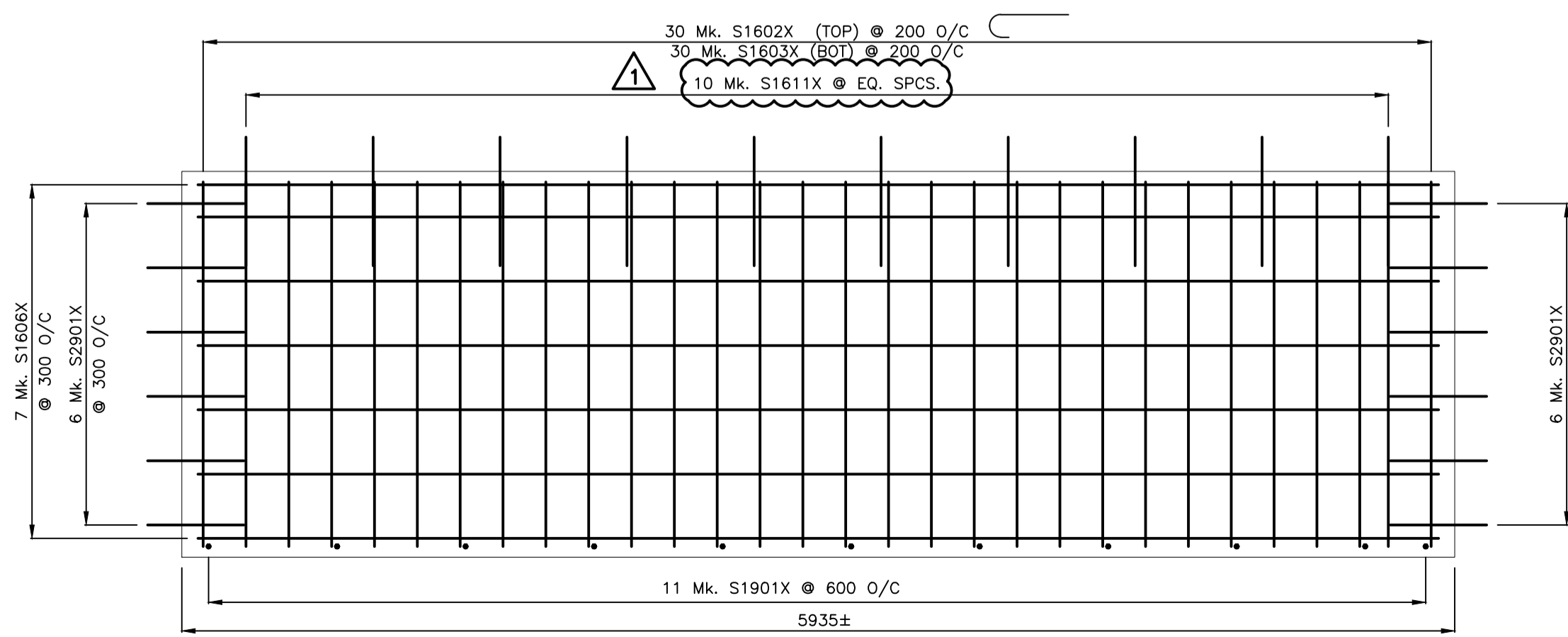
8 DETAIL - TYPE 'H'  
52/53 1:25



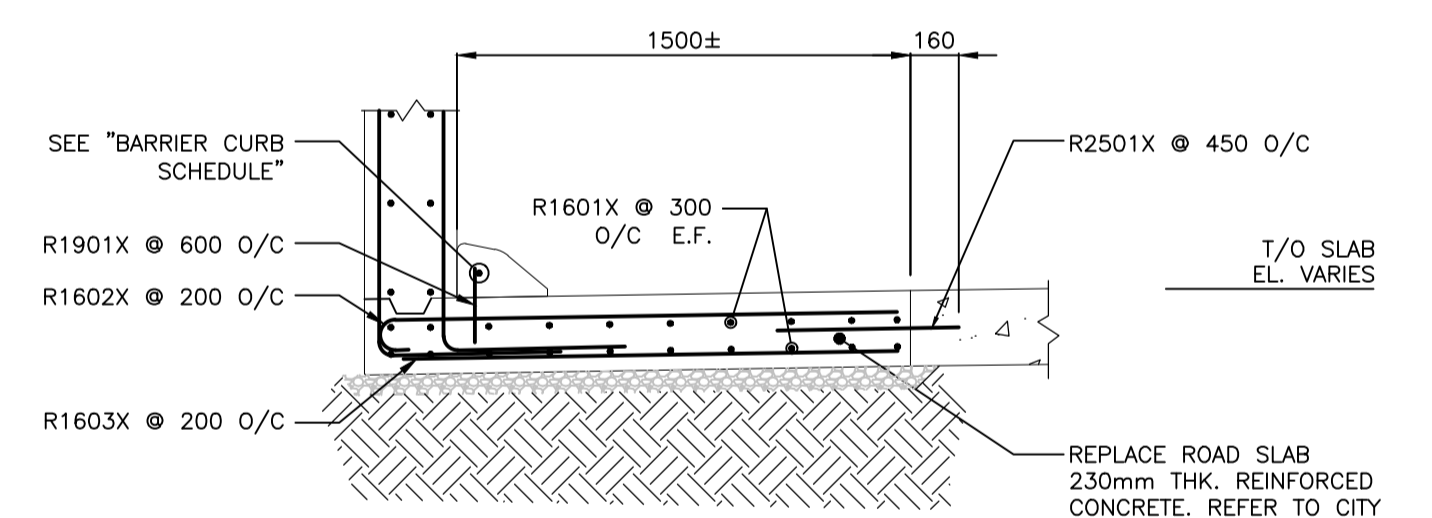
3 DETAIL - TYPE 'C'  
52/53 1:25



6 DETAIL - TYPE 'F'  
52/53 1:25



4 DETAIL - TYPE 'D'  
52/53 1:25



NOTE: REFER TO CITY DRAWING SD-215 FOR GENERAL REBAR PLACEMENT. SPACING ON THIS DRAWING GOVERN.

REPLACE ROAD SLAB 230mm THK. REINFORCED CONCRETE. REFER TO CITY DRAWING SD-2139 FOR TRANSVERSE AND TIED JOINT DETAILS.

TYPICAL ROADWAY REPAIR SECTION  
1:25

MODIFIED BARRIER CURB REBAR SCHEDULE		
STRAIGHT BARS		
PANEL TYPE	MARK	QTY. / PANEL
TYPE 'A'	S1001X	1
TYPE 'B'	S1002X	1
TYPE 'C'	S1003X	1
TYPE 'D'	S1004X	1
TYPE 'E'	S1005X	1
TYPE 'F'	S1006X	1
TYPE 'G'	S1007X	1
TYPE 'H'	S1008X	1

LOCATION APPROVED UNDERGROUND STRUCTURES

SUPV. U/G STRUCTURES COMMITTEE DATE

NOTE: LOCATION OF UNDERGROUND STRUCTURES AS SHOWN ARE BASED ON THE BEST INFORMATION AVAILABLE BUT NO GUARANTEE IS GIVEN THAT ALL EXISTING UTILITIES ARE SHOWN OR THAT THE GIVEN LOCATIONS ARE EXACT. CONFIRMATION OF EXISTENCE AND EXACT LOCATION OF ALL SERVICES MUST BE OBTAINED FROM THE INDIVIDUAL UTILITIES BEFORE PROCEEDING WITH CONSTRUCTION.

B.M. ELEV.	NO.	REVISIONS	DATE	BY
	1	ISSUED FOR ADDENDUM No.1	16.07.13	K.S.A.
	0	ISSUED FOR TENDER	16.07.04	K.S.A.

**Stantec**  
500 - 311 Portage Avenue, Winnipeg MB Canada  
www.stantec.com

DESIGNED BY: S.Y. CHECKED BY: K.S.A.  
DRAWN BY: T.B.C. APPROVED BY: B.J.W.

HOR. SCALE: AS NOTED  
VERTICAL: \_\_\_\_\_

RELEASED FOR CONSTRUCTION: \_\_\_\_\_  
DATE: 2016.07.04

ENGINEER'S SEAL

CONSULTANT DRAWING NO. S-137

**THE CITY OF WINNIPEG**  
PUBLIC WORKS DEPARTMENT  
ENGINEERING DIVISION

2016 REGIONAL STREET PROGRAM  
ARCHIBALD STREET  
UNDERPASS REHABILITATION  
SLAB REPLACEMENT REINFORCING DETAILS

SHEET 53 OF 62  
CAD FILE DRAWING NUMBER 06880s-135-884.dwg  
CITY DRAWING NUMBER U205-16-53