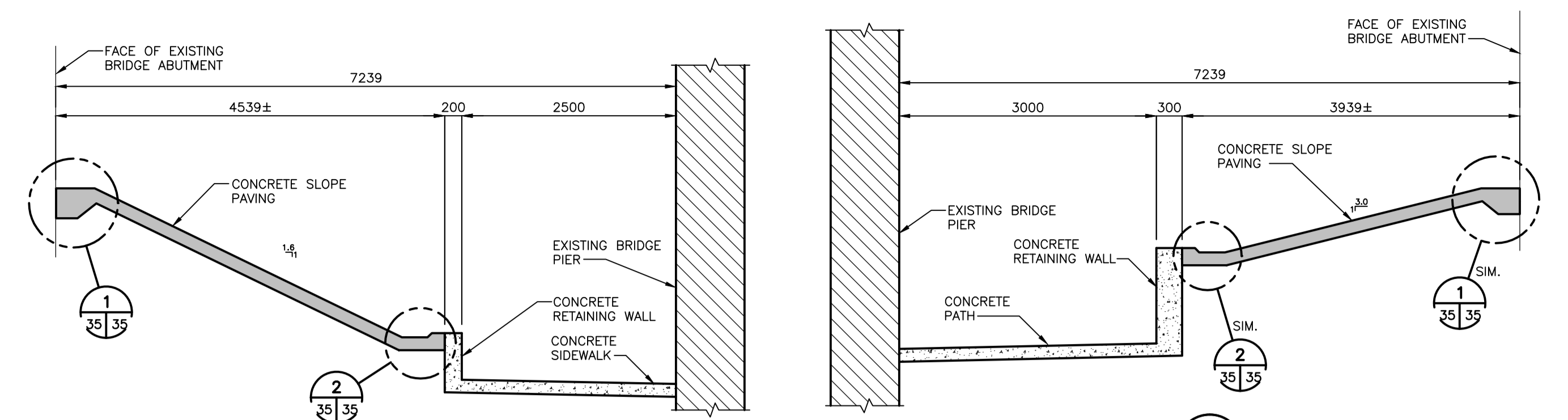
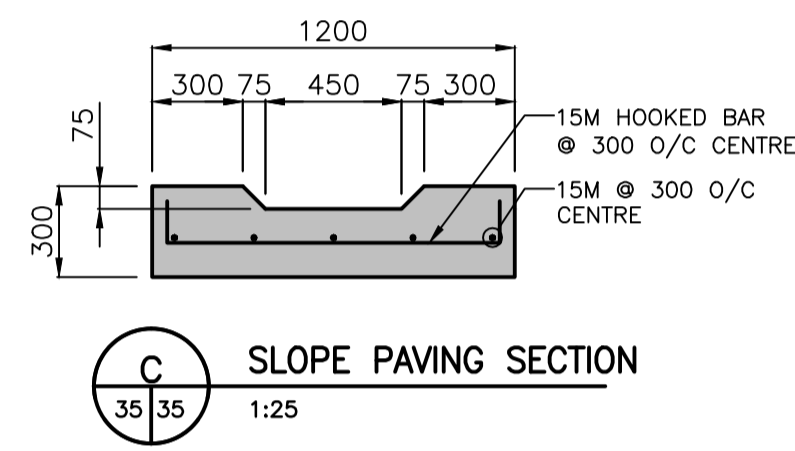


SLOPE PAVING – WEST SIDE ABUTMENT
1:75

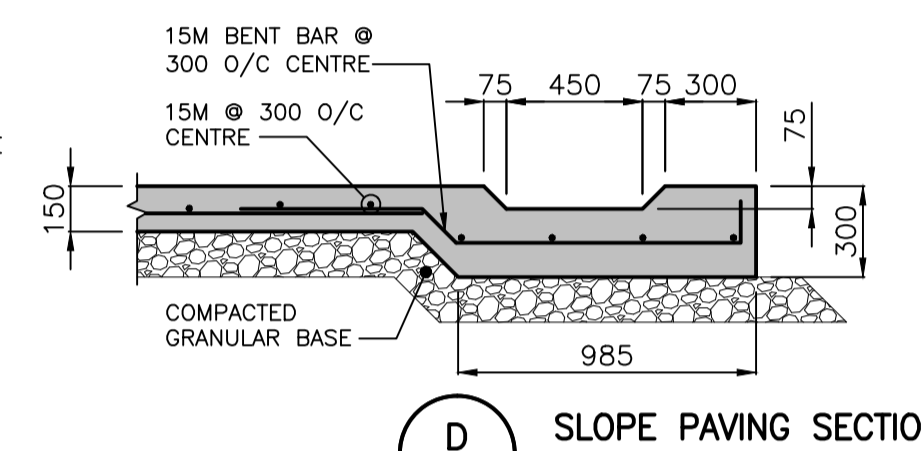


WEST SIDE SECTION
1:50

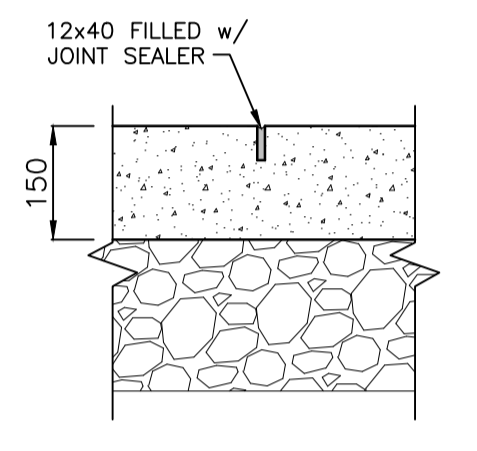
EAST SIDE SECTION
1:50



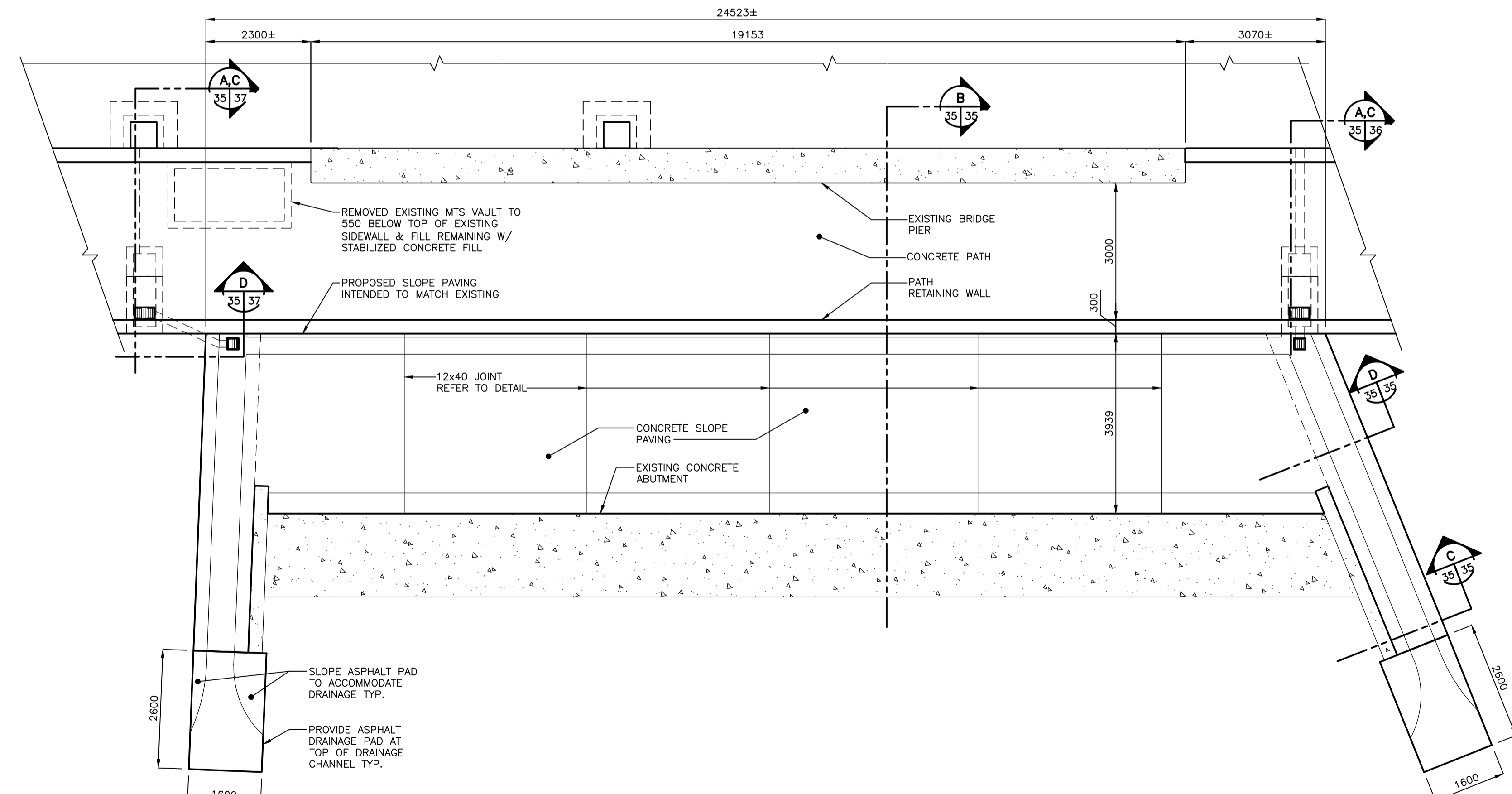
SLOPE PAVING SECTION
1:25



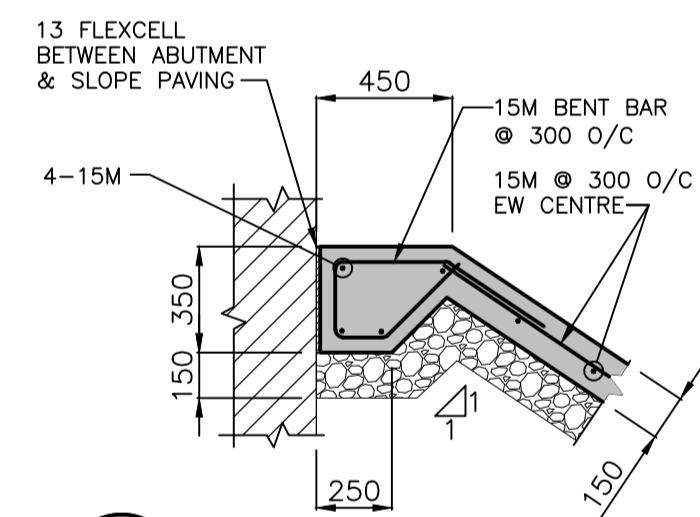
SLOPE PAVING SECTION
1:25



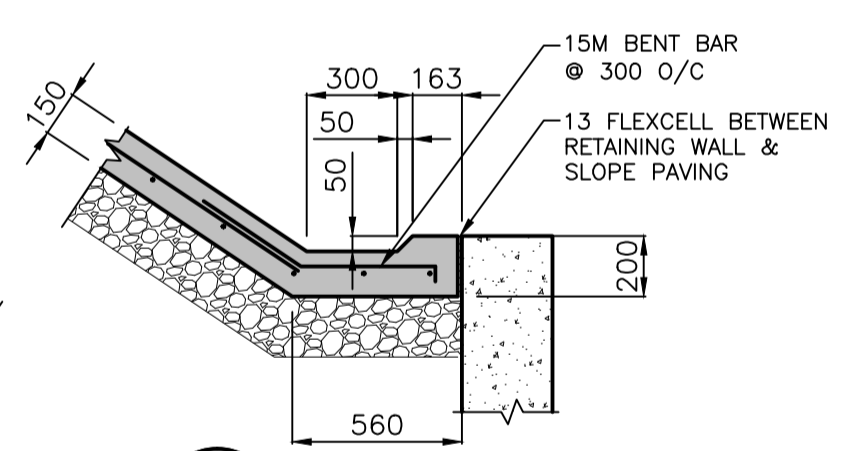
TYPICAL JOINT DETAIL
1:10



SLOPE PAVING – EAST SIDE ABUTMENT
1:75



1 SLOPE PAVING DETAIL
1:25



2 SLOPE PAVING DETAIL
1:25

NOTE:
COMPACTED GRANULAR BASE TO BE MIN. 150.

LOCATION APPROVED UNDERGROUND STRUCTURES	
SUPV. U/G STRUCTURES COMMITTEE	DATE
NOTE: LOCATION OF UNDERGROUND STRUCTURES AS SHOWN ARE BASED ON THE BEST INFORMATION AVAILABLE BUT NO GUARANTEE IS GIVEN THAT ALL EXISTING UTILITIES ARE SHOWN OR THAT THE GIVEN LOCATIONS ARE EXACT. CONFIRMATION OF EXISTENCE AND EXACT LOCATION OF ALL SERVICES MUST BE OBTAINED FROM THE INDIVIDUAL UTILITIES BEFORE PROCEEDING WITH CONSTRUCTION.	
NO.	REVISIONS

B.M. ELEV.	
DESIGNED BY	S.Y.
CHECKED BY	K.S.A.
DRAWN BY	V.F.
APPROVED BY	B.J.W.
HOR. SCALE:	AS NOTED
VERTICAL:	
ISSUED FOR TENDER	16.07.04 K.S.A.
NO.	REVISIONS
DATE	2016.02.19

Stantec
500 - 311 Portage Avenue, Winnipeg MB Canada
www.stantec.com

ENGINEER'S SEAL
CONSULTANT DRAWING NO. S-119

THE CITY OF WINNIPEG
PUBLIC WORKS DEPARTMENT
ENGINEERING DIVISION

2016 REGIONAL STREET PROGRAM	
ARCHIBALD STREET	SHEET 35 OF 62
UNDERPASS REHABILITATION	CAD FILE DRAWING NUMBER 06880s-119-884.dwg
SLOPE PAVING PLAN AND DETAILS	CITY DRAWING NUMBER U205-16-35

I:\A\137\06880s\03100_drawing\0302_sloped.dwg
 Date: 2016 Jul 05 3:02pm
 User: B.J.W.