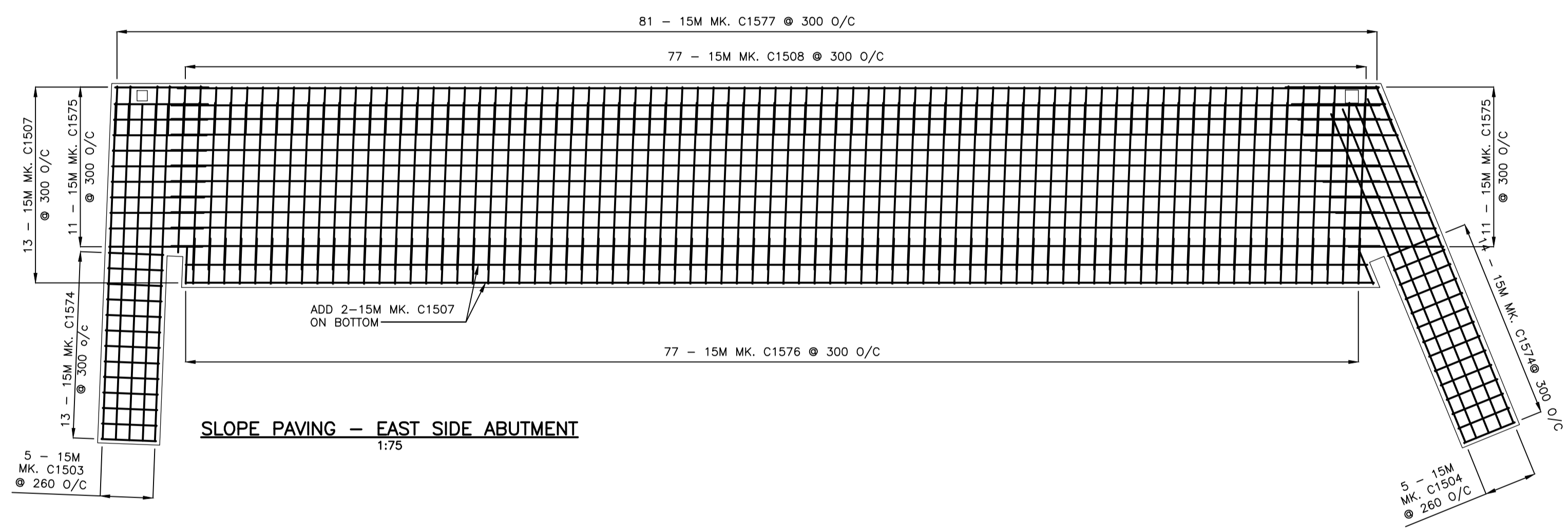
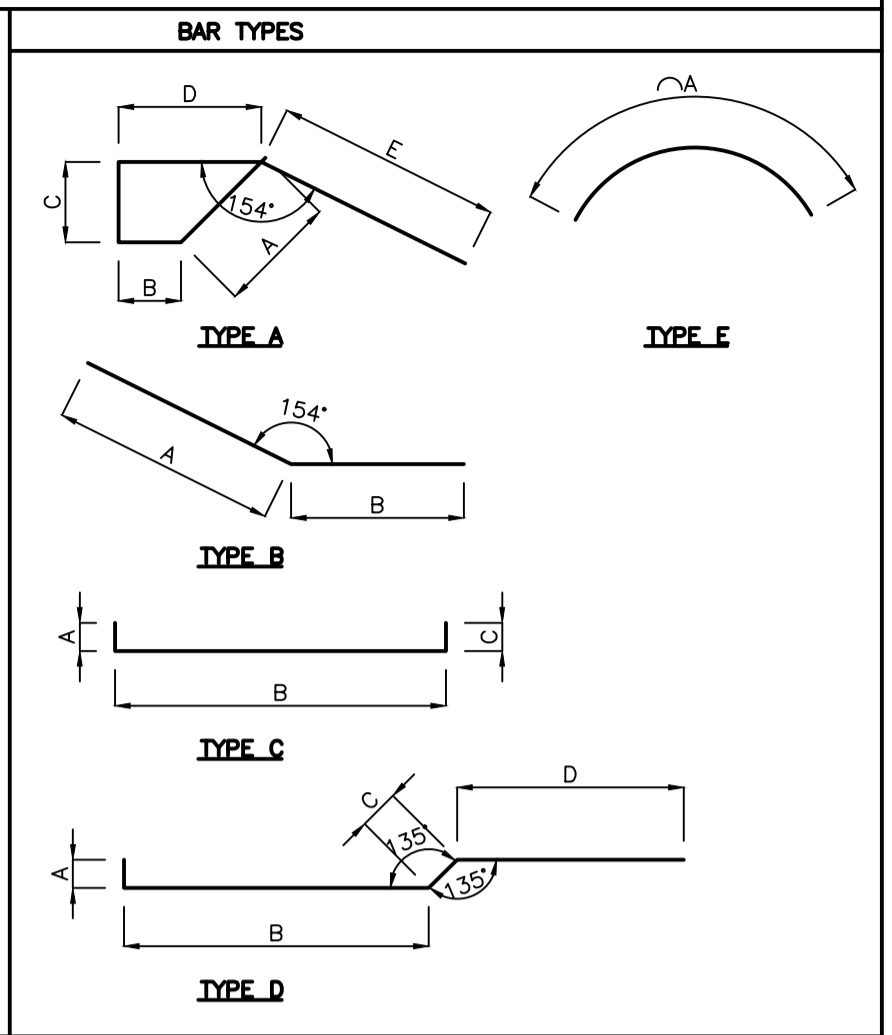


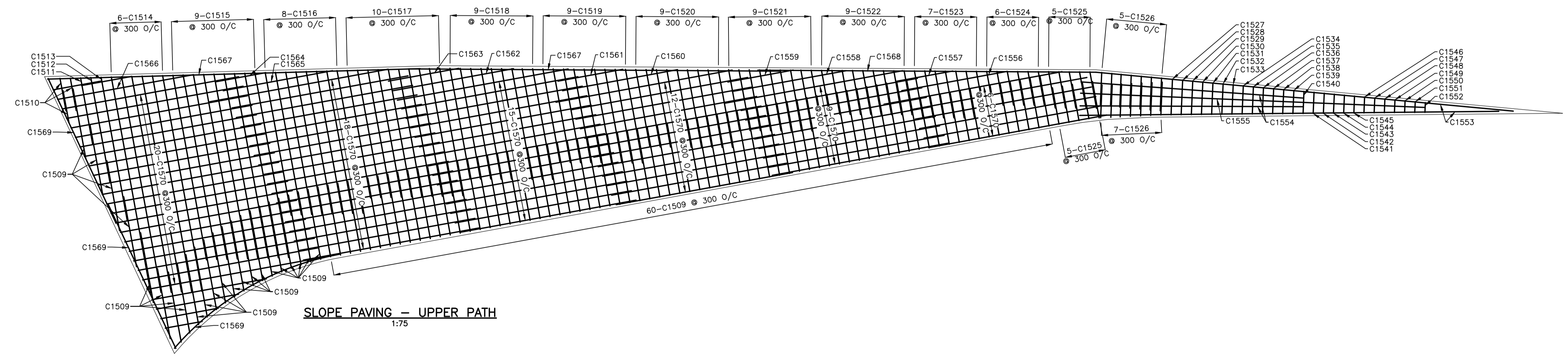
SLOPE PAVING - WEST SIDE ABUTMENT  
1:75

**BILL OF REINFORCING STEEL**

STRAIGHT BARS				STRAIGHT BARS				STRAIGHT BARS				BENT BARS										
MARK	QTY.	LENGTH (mm)	MASS (kg)	MARK	QTY.	LENGTH (mm)	MASS (kg)	MARK	QTY.	LENGTH (mm)	MASS (kg)	MARK	QTY.	TYPE	A	B	C	D	E	LENGTH (mm)	MASS (kg)	
C1501	5	7110	55.8	C1525	10	1090	17.1	C1549	1	380	0.6	C1571	1	E	5760						5760	9.0
C1502	5	7880	61.9	C1526	14	970	21.3	C1550	1	350	0.5	C1572	44	A	316	165	212	378	602		1673	115.6
C1503	5	6494	51.0	C1527	1	1060	1.7	C1551	1	320	0.5	C1573	55	B	600	457					1057	91.3
C1504	5	6854	53.8	C1528	1	1030	1.6	C1552	1	290	0.5	C1574	54	C	75	1080	75				1230	104.3
C1505	47	3845	283.7	C1529	1	1000	1.6	C1553	2	12400	38.9	C1575	50	D	75	806	106	600			1587	124.6
C1506	18	14152	399.9	C1530	1	970	1.5	C1554	2	6600	20.7	C1576	77	A	322	165	215	380	600		1682	203.3
C1507	15	23346	549.8	C1531	1	935	1.5	C1555	1	10200	16.0	C1577	81	B	600	449					1049	133.4
C1508	55	3220	278.0	C1532	1	905	1.4	C1556	1	3175	5.0											
C1509	95	3220	278.0	C1533	1	875	1.4	C1557	1	1665	2.6											
C1510	3	980	4.6	C1534	1	840	1.3	C1558	1	3420	5.4											
C1511	1	2010	3.2	C1535	1	810	1.3	C1559	1	1970	3.1											
C1512	1	3160	5.0	C1536	1	780	1.2	C1560	1	3460	5.4											
C1513	1	4320	6.8	C1537	1	750	1.2	C1561	1	1950	3.1											
C1514	6	6480	61.0	C1538	1	720	1.1	C1562	1	3625	5.7											
C1515	9	5550	78.4	C1539	1	690	1.1	C1563	1	2115	3.3											
C1516	8	4280	53.8	C1540	1	660	1.0	C1564	1	1505	2.4											
C1517	10	3830	60.1	C1541	1	630	1.0	C1565	1	3285	5.2											
C1518	9	3320	46.9	C1542	1	600	0.9	C1566	1	4085	6.4											
C1519	9	2810	39.7	C1543	1	565	0.9	C1567	2	11000	34.5											
C1520	9	2330	32.9	C1544	1	535	0.8	C1568	1	10000	15.7											
C1521	9	1830	25.9	C1545	1	505	0.8	C1569	1	4715	7.4											
C1522	9	1320	18.7	C1546	1	475	0.7	C1570	80	5300	665.7											
C1523	7	1410	15.5	C1547	1	440	0.6															
C1524	6	1010	9.5	C1548	1	410	0.6															
<b>TOTAL MASS OF BLACK STEEL REINFORCING</b>																					<b>4195.4 kg</b>	



SLOPE PAVING - EAST SIDE ABUTMENT  
1:75



SLOPE PAVING - UPPER PATH  
1:75

LOCATION APPROVED UNDERGROUND STRUCTURES  
 SUPV. U/G STRUCTURES COMMITTEE DATE  
 NOTE: LOCATION OF UNDERGROUND STRUCTURES AS SHOWN ARE BASED ON THE BEST INFORMATION AVAILABLE BUT NO GUARANTEE IS GIVEN THAT ALL EXISTING UTILITIES ARE SHOWN OR THAT THE GIVEN LOCATIONS ARE EXACT. CONFIRMATION OF EXISTENCE AND EXACT LOCATION OF ALL SERVICES MUST BE OBTAINED FROM THE INDIVIDUAL UTILITIES BEFORE PROCEEDING WITH CONSTRUCTION.

B.M. ELEV.					
DESIGNED BY:	S.Y.	CHECKED BY:	K.S.A.	ENGINEER'S SEAL	
DRAWN BY:	V.F.	APPROVED BY:	B.J.W.		
HOR. SCALE:	AS NOTED	RELEASED FOR CONSTRUCTION:		CONSULTANT DRAWING NO.	S-122
VERTICAL:					
0 ISSUED FOR TENDER	16.07.04	K.S.A.			
NO. REVISIONS		DATE	BY		
		2016.02.19			

**Stantec**  
 500 - 311 Portage Avenue, Winnipeg MB Canada  
 www.stantec.com

**THE CITY OF WINNIPEG**  
 PUBLIC WORKS DEPARTMENT  
 ENGINEERING DIVISION

2016 REGIONAL STREET PROGRAM  
 ARCHIBALD STREET  
 UNDERPASS REHABILITATION  
 SLOPE PAVING REINFORCING AND SCHEDULE

SHEET 38 OF 62  
 CAD FILE DRAWING NUMBER 06880s-119-884.dwg  
 CITY DRAWING NUMBER U205-16-38