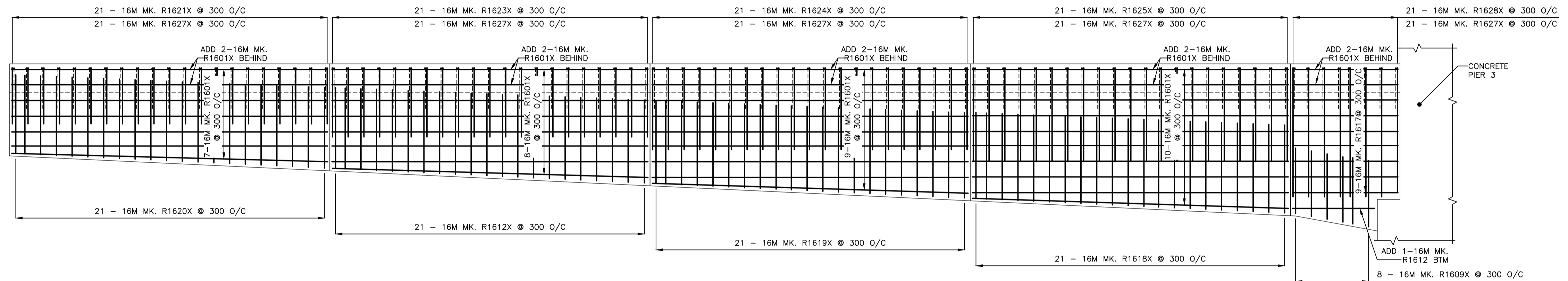


**SOUTH EAST RETAINING WALL
REFACING REINFORCING**
1:50

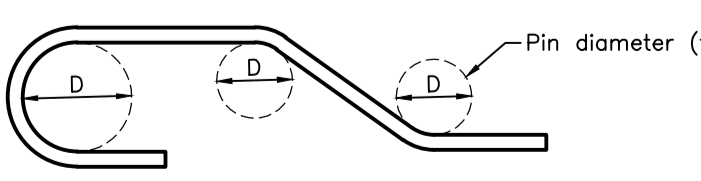


**NORTH EAST RETAINING WALL
REFACING REINFORCING**
1:50

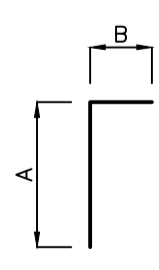
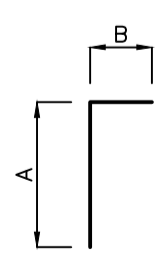
STRAIGHT BARS				BENT BARS									
MARK	QTY.	LENGTH (mm)	MASS (kg)	MARK	QTY.	TYPE	A	B	C	D	E	LENGTH (mm)	MASS (kg)
R1601X	197	6000	0.6	R1621X	147	A	1050	155				1205	278.1
R1602X	42	1400	0.5	R1622X	228	A	640	155				795	284.6
R1603X	42	1700	0.5	R1623X	84	A	1300	155				1455	191.9
R1604X	42	1770	0.5	R1624X	84	A	1540	155				1695	223.5
R1605X	42	1830	38.9	R1625X	84	A	1780	155				1935	255.5
R1606X	42	1890	20.7	R1626X	18	A	2370	155				2525	71.4
R1607X	22	2700	16.0	R1627X	207	A	790	155				945	307.1
R1608X	4	2270	5.0	R1628X	18	A	2440	155				2595	73.3
R1609X	28	1280	2.6										
R1610X	11	1900	5.4										
R1611X	2	1460	3.1										
R1612X	43	1570	5.4										
R1613X	21	1840	3.1										
R1614X	21	1880	5.7										
R1615X	21	1920	3.3										
R1616X	21	1960	2.4										
R1617X	21	1990	5.2										
R1618X	21	1670	6.4										
R1619X	21	1610	34.5										
R1620X	21	1530	15.7										
TOTAL MASS OF MMFX STEEL REINFORCING = 4889.3													

NOTE:

- All dimensions given in bending diagram are out to out, except radii. radii are inside dimensions. all reinforcing steel bends and hooks shall conform to clause 6.6.2 of C.S.A. A23.1-04, unless noted otherwise in the BILL OF REINFORCING STEEL.
- All reinforcing steel shall be deformed steel, unless noted otherwise in the BILL OF REINFORCING STEEL.
- Like bars shall be bundled, securely tied and identified as to mark and site no. by appropriate means. all other items to be identified in a similar fashion.
- Unless otherwise noted, pin diameters shall be similar at all bends and hooks of a bar in accordance with the following detail:



Pin diameter (typ)


BAR TYPES	
 <p>TYPE A</p>	 <p>TYPE B</p>

LOCATION APPROVED UNDERGROUND STRUCTURES

SUPV. U/G STRUCTURES COMMITTEE DATE

NOTE:
LOCATION OF UNDERGROUND STRUCTURES AS SHOWN ARE BASED ON THE BEST INFORMATION AVAILABLE BUT NO GUARANTEE IS GIVEN THAT ALL EXISTING UTILITIES ARE SHOWN OR THAT THE GIVEN LOCATIONS ARE EXACT. CONFIRMATION OF EXISTENCE AND EXACT LOCATION OF ALL SERVICES MUST BE OBTAINED FROM THE INDIVIDUAL UTILITIES BEFORE PROCEEDING WITH CONSTRUCTION.

B.M. ELEV.	NO.	REVISIONS	DATE	BY
	0	ISSUED FOR TENDER	16.07.04	K.A.




500 - 311 Portage Avenue, Winnipeg MB Canada
www.stantec.com

DESIGNED BY: S.Y.	CHECKED BY: K.S.A.
DRAWN BY: V.F.	APPROVED BY: B.J.W.
HOR. SCALE: AS NOTED	RELEASED FOR CONSTRUCTION: DATE
VERTICAL: DATE 2016.07.04	DATE

ENGINEER'S SEAL

CONSULTANT DRAWING NO. S-134



THE CITY OF WINNIPEG
PUBLIC WORKS DEPARTMENT
ENGINEERING DIVISION

2016 REGIONAL STREET PROGRAM

ARCHIBALD STREET
UNDERPASS REHABILITATION
EAST RETAINING WALL REINFORCING DETAILS

SHEET 50 OF 62
CAD FILE DRAWING NUMBER 06880s-132-884.dwg
CITY DRAWING NUMBER U205-16-50