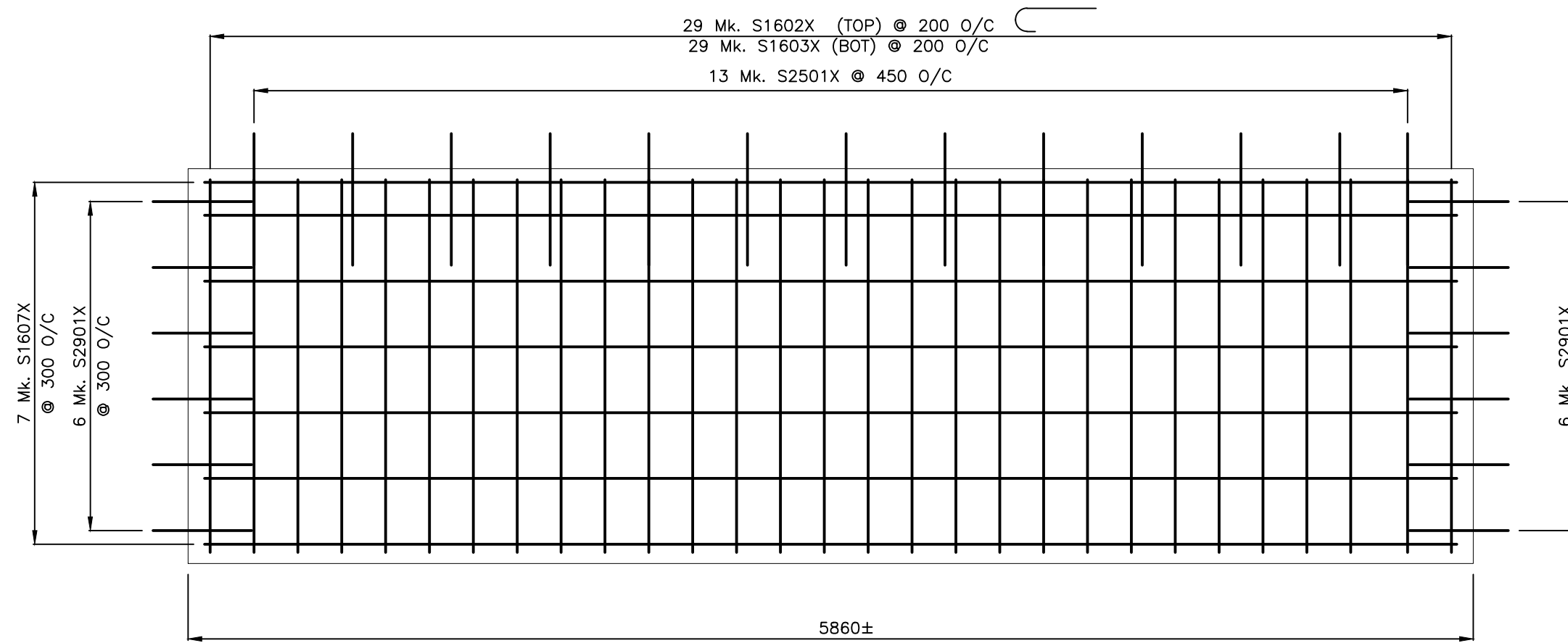
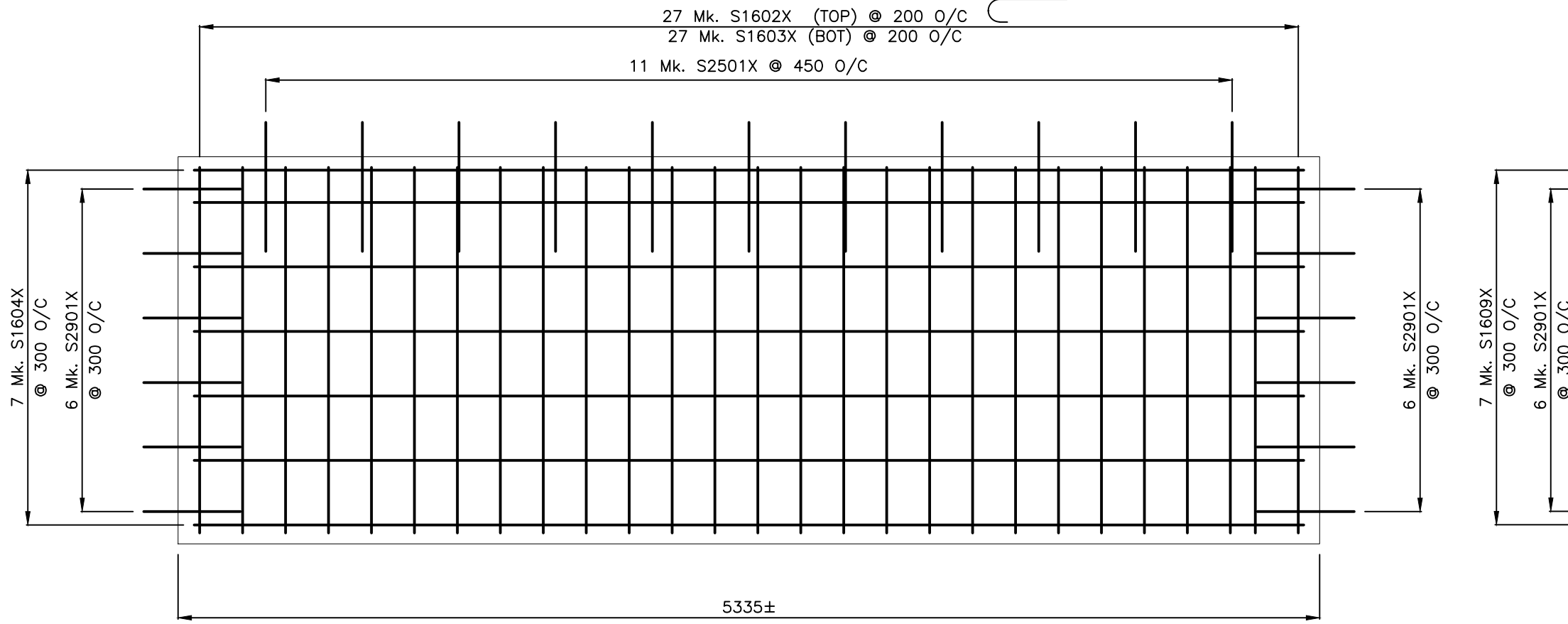


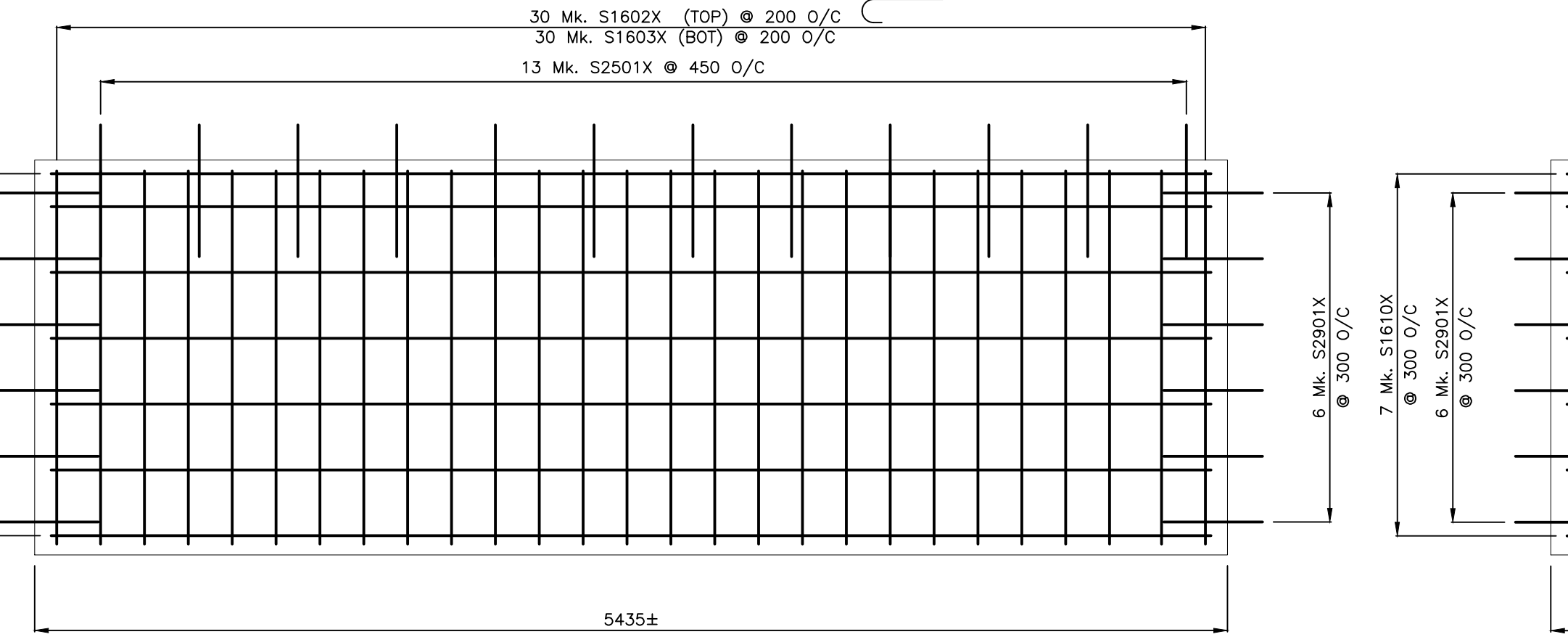
1 DETAIL - TYPE 'A'
51/53 1:25



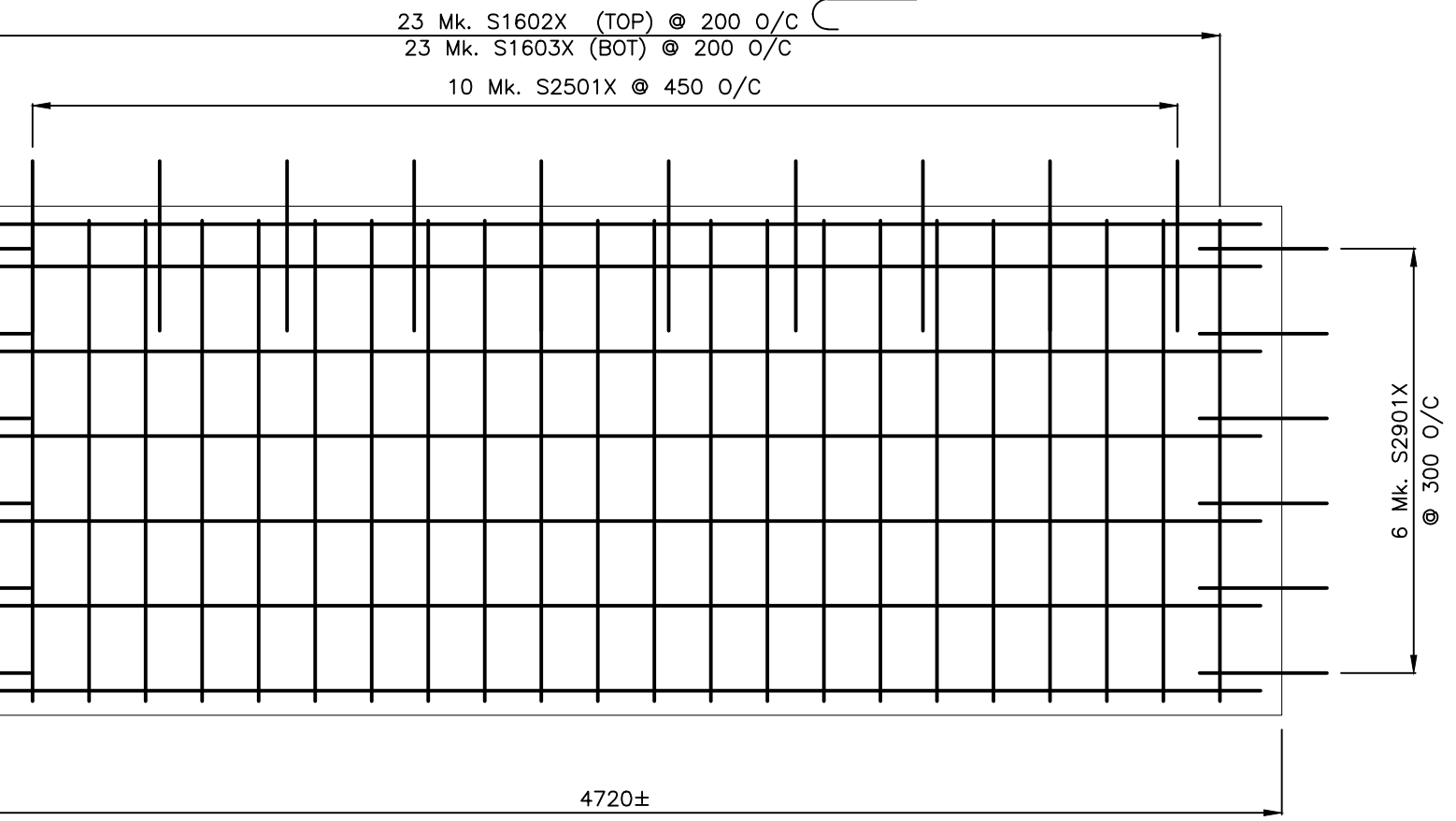
5 DETAIL - TYPE 'E'
52/53 1:25



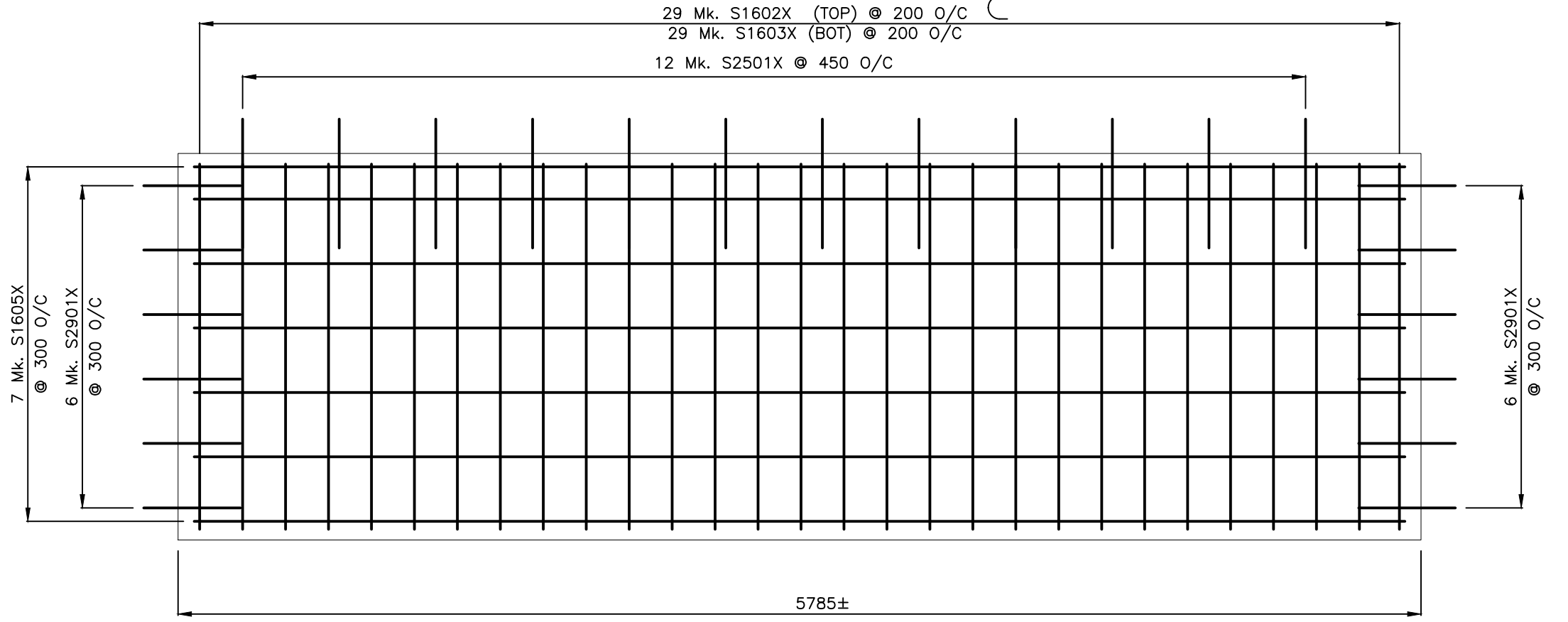
2 DETAIL - TYPE 'B'
51/53 1:25



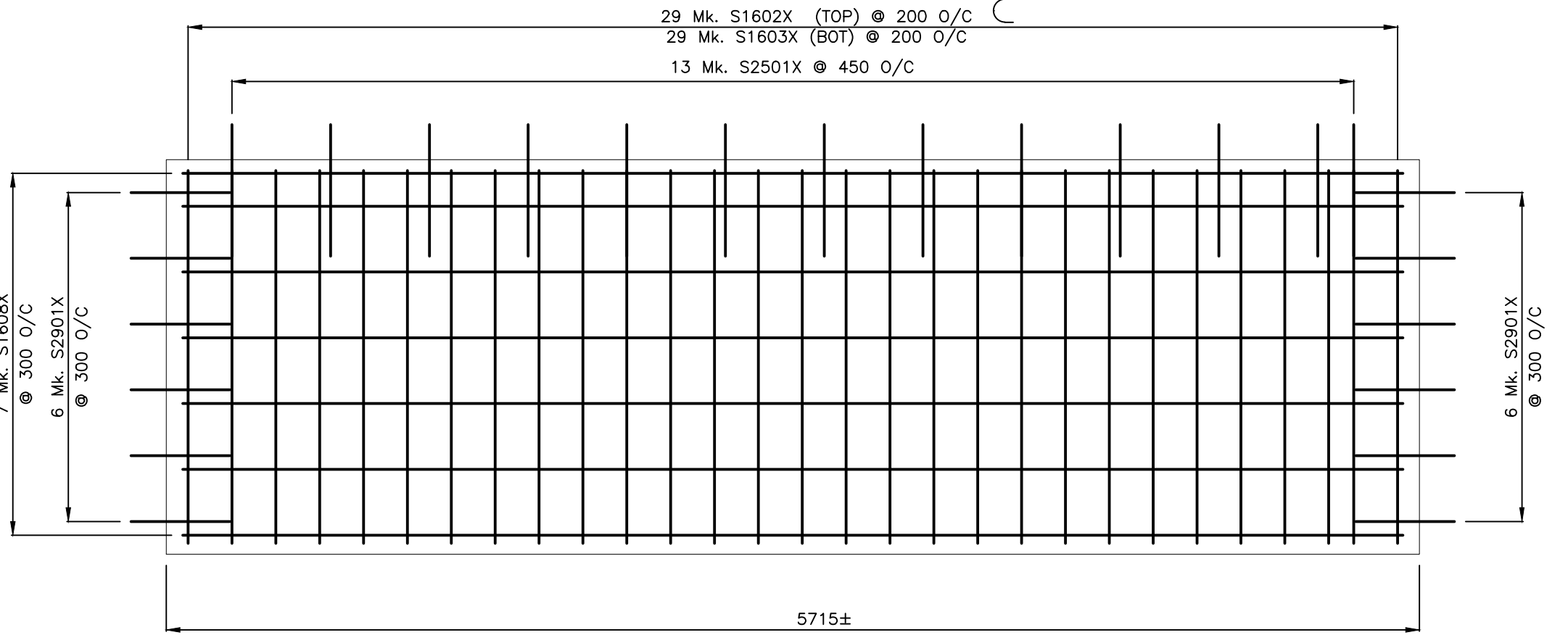
7 DETAIL - TYPE 'G'
52/53 1:25



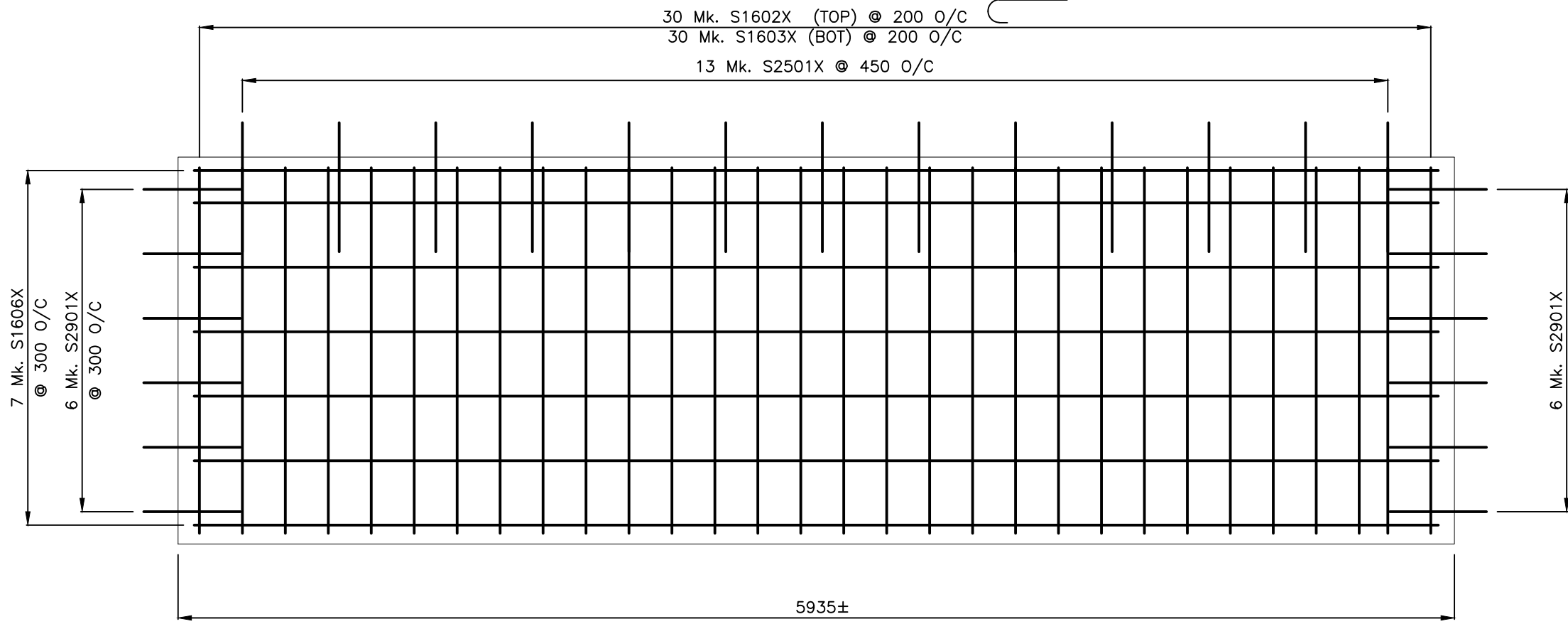
8 DETAIL - TYPE 'C'
52/53 1:25



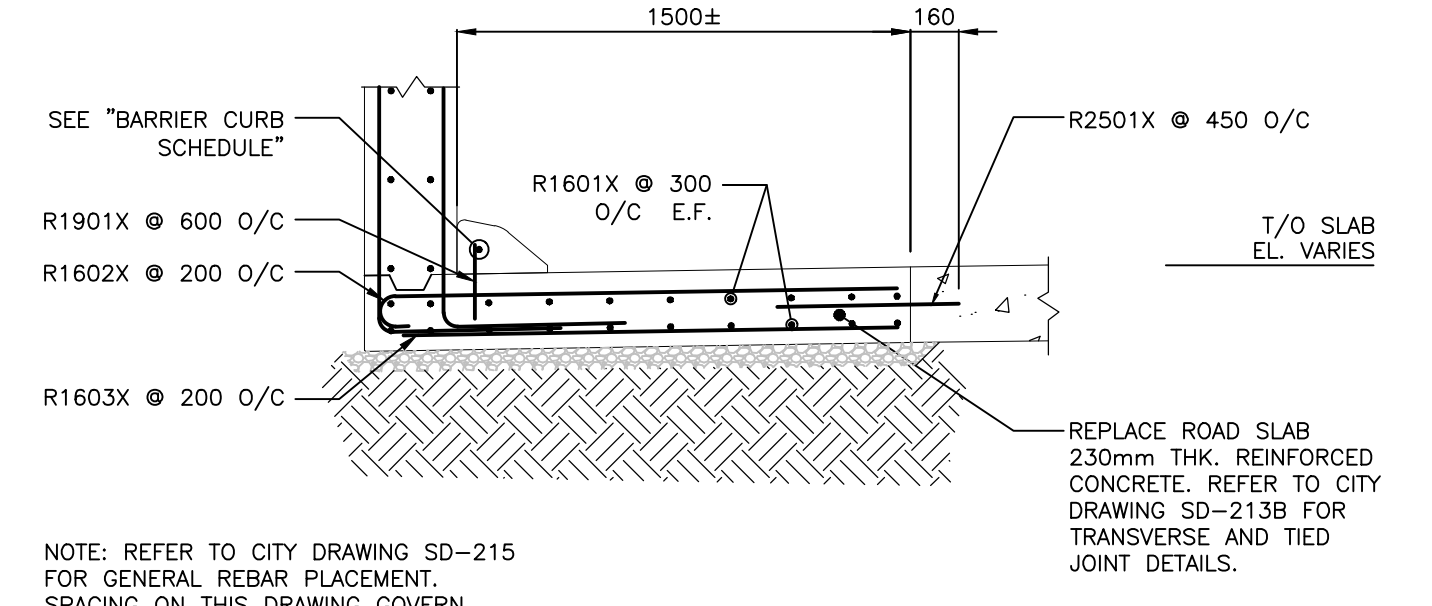
3 DETAIL - TYPE 'C'
52/53 1:25



6 DETAIL - TYPE 'F'
52/53 1:25



4 DETAIL - TYPE 'D'
52/53 1:25



TYPICAL ROADWAY REPAIR SECTION
1:25

MODIFIED BARRIER CURB REBAR SCHEDULE		
STRAIGHT BARS		
PANEL TYPE	MARK	QTY. / PANEL
TYPE 'A'	S1001X	1
TYPE 'B'	S1002X	1
TYPE 'C'	S1003X	1
TYPE 'D'	S1004X	1
TYPE 'E'	S1005X	1
TYPE 'F'	S1006X	1
TYPE 'G'	S1007X	1

LOCATION APPROVED UNDERGROUND STRUCTURES

SUPV. U/G STRUCTURES COMMITTEE DATE

NOTE:
LOCATION OF UNDERGROUND STRUCTURES AS SHOWN ARE BASED ON THE BEST INFORMATION AVAILABLE BUT NO GUARANTEE IS GIVEN THAT ALL EXISTING UTILITIES ARE SHOWN OR THAT THE GIVEN LOCATIONS ARE EXACT. CONFIRMATION OF EXISTENCE AND EXACT LOCATION OF ALL SERVICES MUST BE OBTAINED FROM THE INDIVIDUAL UTILITIES BEFORE PROCEEDING WITH CONSTRUCTION.

B.M. ELEV.	NO.	REVISIONS	DATE	BY
	0	ISSUED FOR TENDER	16.07.04	K.S.A.

Stantec
500 - 311 Portage Avenue, Winnipeg MB Canada
www.stantec.com

DESIGNED BY: S.Y.	CHECKED BY: K.S.A.
DRAWN BY: T.B.C.	APPROVED BY: B.J.W.
HOR. SCALE: AS NOTED	RELEASED FOR CONSTRUCTION: DATE
VERTICAL: DATE 2016.07.04	DATE

ENGINEER'S SEAL

CONSULTANT DRAWING NO. S-137

THE CITY OF WINNIPEG
PUBLIC WORKS DEPARTMENT
ENGINEERING DIVISION

2016 REGIONAL STREET PROGRAM
ARCHIBALD STREET
UNDERPASS REHABILITATION
SLAB REPLACEMENT REINFORCING DETAILS

SHEET 53 OF 62
CAD FILE DRAWING NUMBER 06880s-135-884.dwg
CITY DRAWING NUMBER U205-16-53