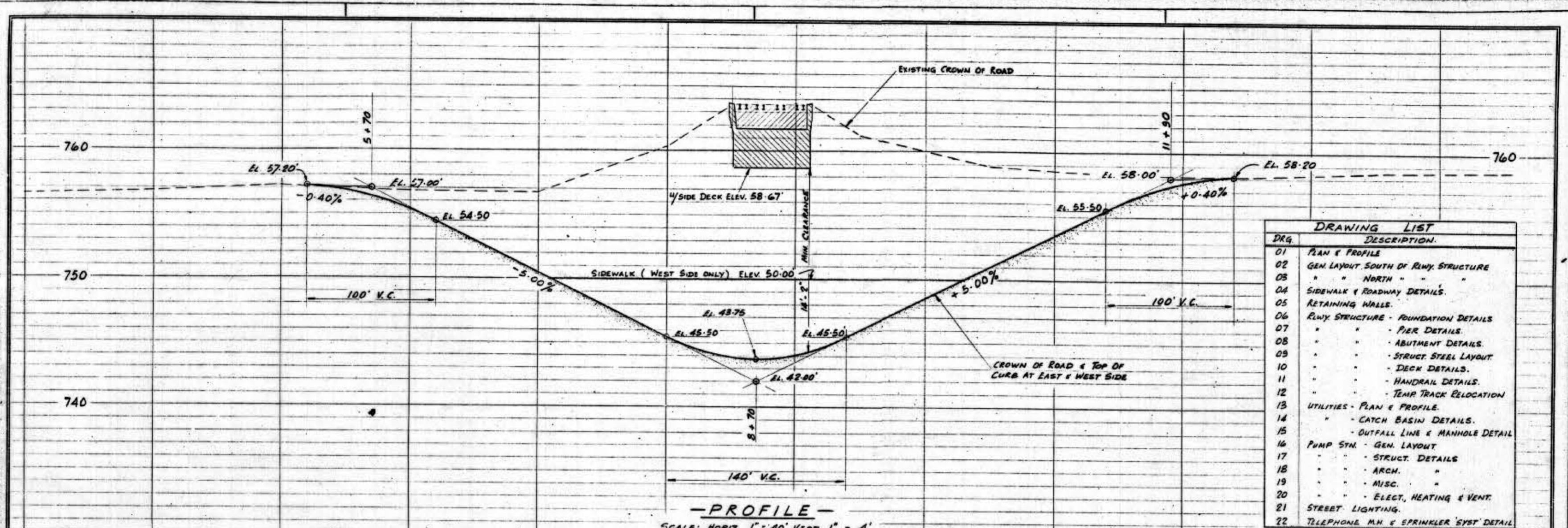
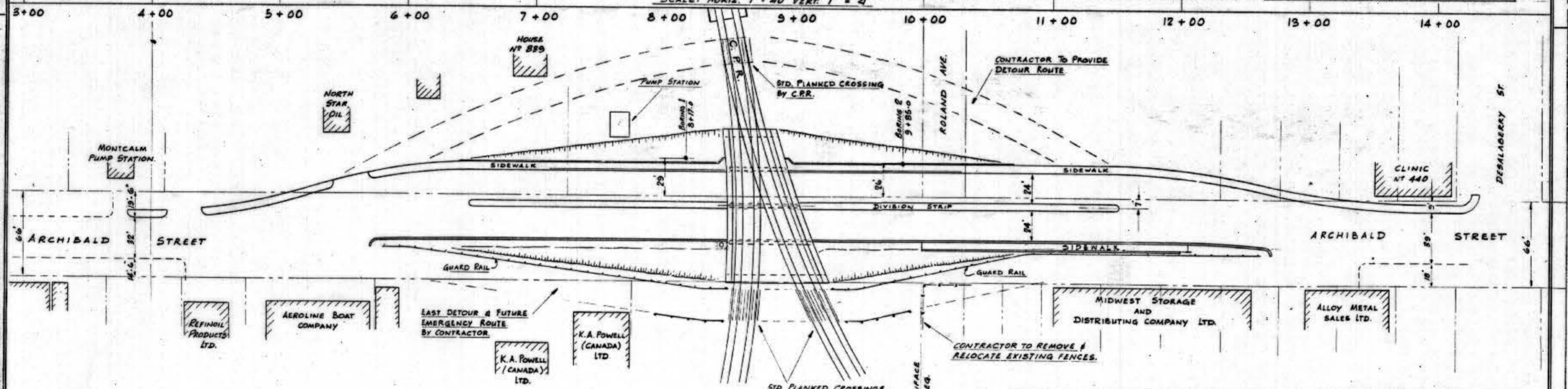


1
2
3
4
5
6
7
8
9
10
11
12
13
14
15
16
17
18
19
20
21
22
23



DRG.	DESCRIPTION
01	PLAN & PROFILE
02	GEN LAYOUT SOUTH OF R.W.Y. STRUCTURE
03	" " NORTH " "
04	SIDEWALK & ROADWAY DETAILS.
05	RETAINING WALLS.
06	R.W.Y. STRUCTURE - FOUNDATION DETAILS
07	" " " " PIER DETAILS.
08	" " " " ABUTMENT DETAILS.
09	" " " " STRUCT. STEEL LAYOUT.
10	" " " " DECK DETAILS.
11	" " " " HANDRAIL DETAILS.
12	" " " " TEMP. TRACK RELOCATION.
13	UTILITIES - PLAN & PROFILE.
14	" " " " CATCH BASIN DETAILS.
15	" " " " OUTFALL LINE & MANHOLE DETAIL.
16	PUMP STN. - GEN. LAYOUT.
17	" " " " STRUCT. DETAILS.
18	" " " " ARCH.
19	" " " " MISC.
20	" " " " ELECT. HEATING & VENT.
21	STREET LIGHTING.
22	TELEPHONE M.H. & SPRINKLER SYST. DETAIL.

-PROFILE-
SCALE: HORIZ. 1" = 40' VERT. 1" = 4'



-PLAN-
SCALE: 1" = 40'

Detail Symbol DETAIL NUMBER REFERENCE SYMBOL	HADDIN, DAVIS & BROWN (MANITOBA) LIMITED CONSULTING ENGINEERS WINNIPEG, MANITOBA	
	CITY OF ST. BONIFACE, MANITOBA ARCHIBALD ST. SUBWAY	
PLAN and PROFILE		
SCALE AS SHOWN DATE: AUG. 1958 DESIGNED BY: W.J.G. DRAWN BY: W.G.	CHECKED BY: H.T.G. APP. BY: H.T.G. JOB No. 4102 SHEET No. 1 of 22	DWG. No. SW2-01

10+00 CITY OF ST. BONIFACE
CITY OF WINNIPEG