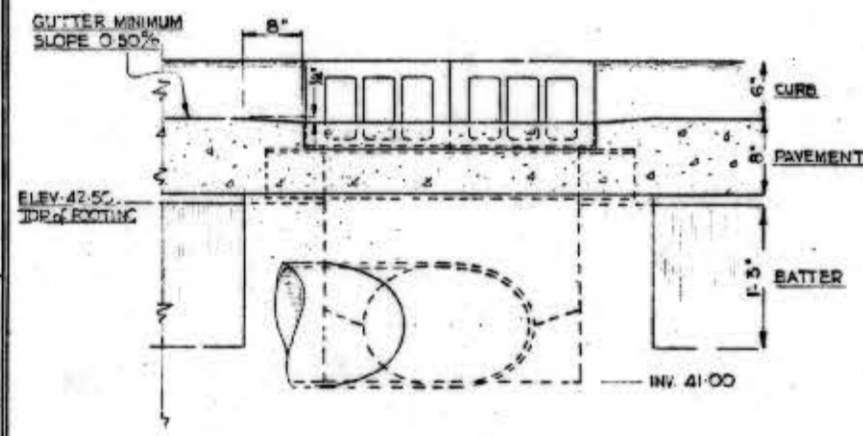
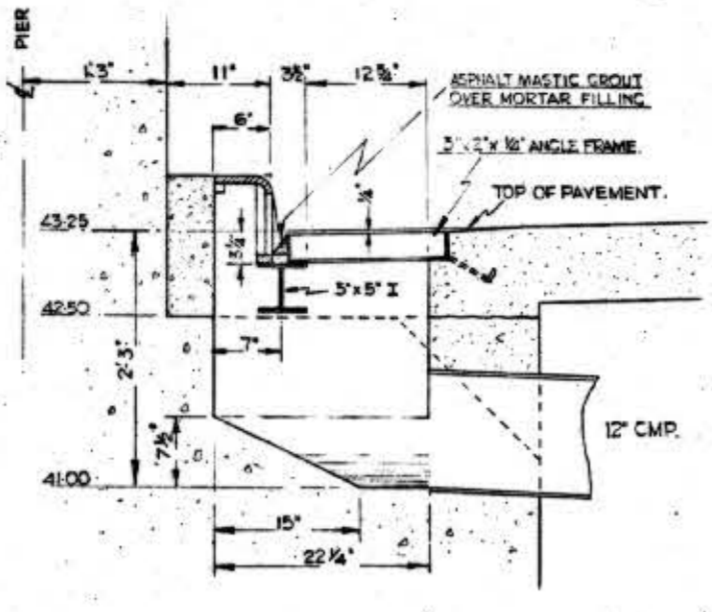


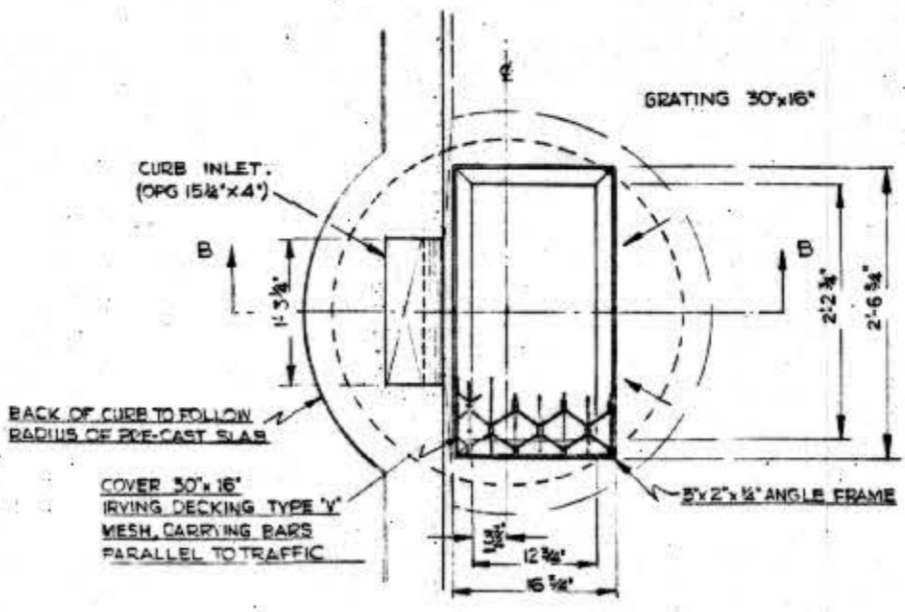
PLAN



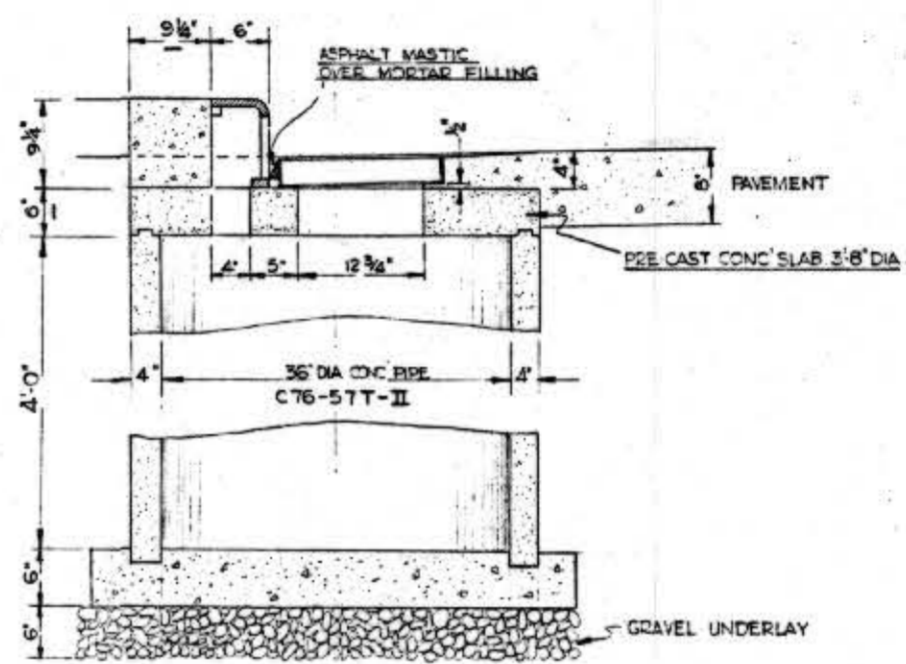
ELEVATION



SECTION 'AA'

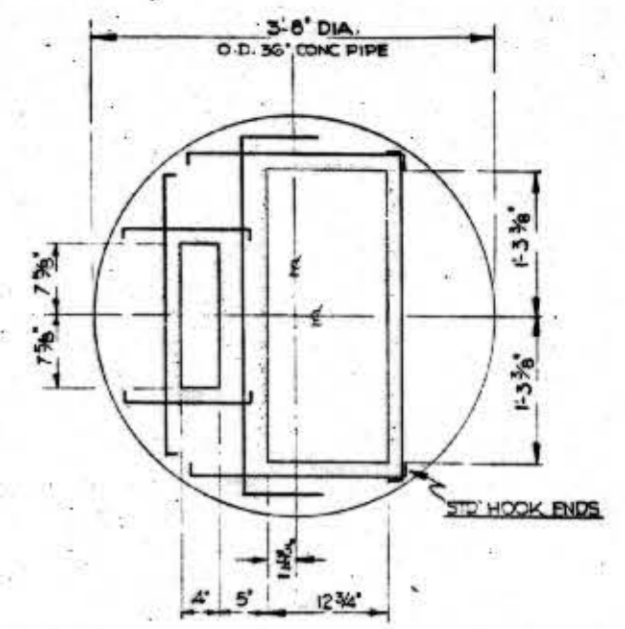


PLAN



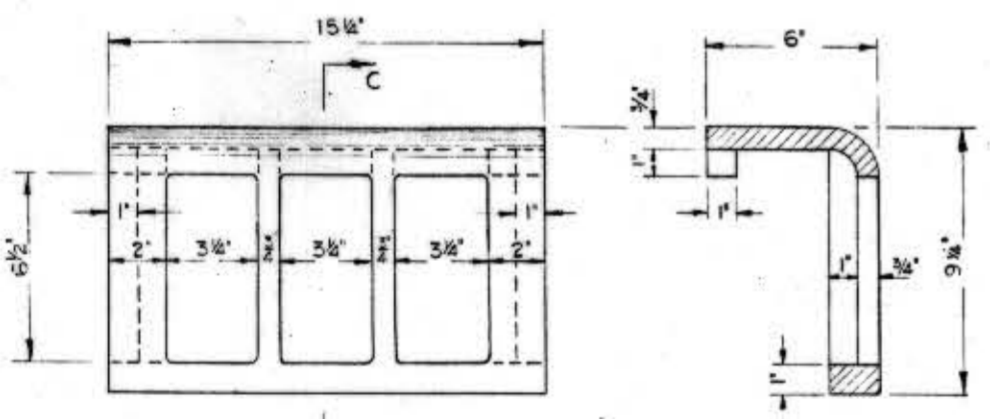
SECTION - 'B-B'

DETAIL CURB CATCH BASIN
SCALE: 1" = 1'-0"

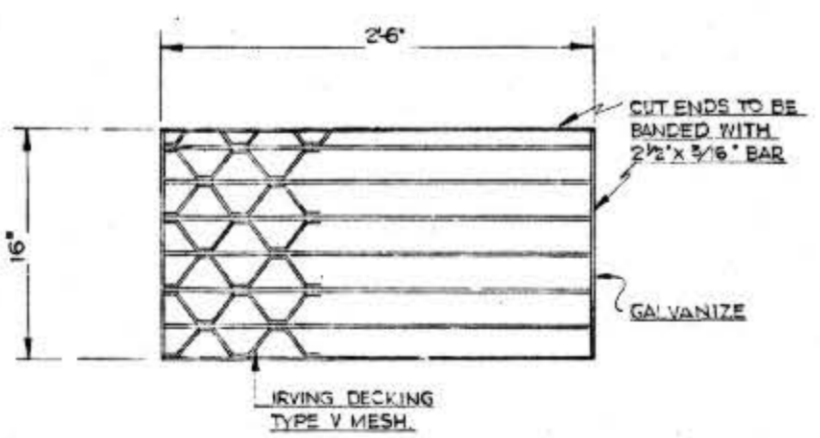


DETAIL OF REINFORCING PRE-CAST SLAB
SCALE: 1" = 1'-0"

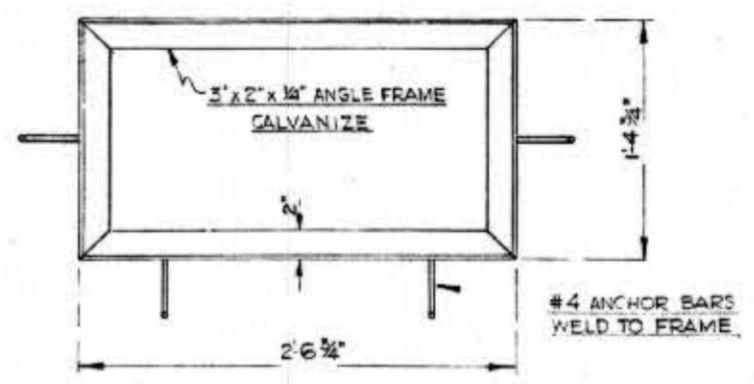
DETAIL CENTRE CATCH BASINS
SCALE: 1" = 1'-0"



FRONT ELEVATION
CURB INLET GRATING
SCALE: 3/4" = 1'-0"



CATCH BASIN COVER
SCALE: 1 1/2" = 1'-0"



CATCH BASIN FRAME
SCALE: 1 1/2" = 1'-0"



| | | | |
|----|-----|-----------|------|
| BY | APP | REVISIONS | DATE |
| | | | |
| | | | |
| | | | |
| | | | |

HADDIN, DAVIS & BROWN (MANITOBA) LIMITED
CONSULTING ENGINEERS
WINNIPEG MANITOBA

CITY OF ST. BONIFACE, MANITOBA
ARCHIBALD ST. SUBWAY

UTILITIES
CATCH BASIN DETAILS

| | | |
|-----------------|--------------------|----------|
| SCALE AS SHOWN | CHK. BY R.C.M. | DWG. No. |
| DATE SEPT. 1959 | APP. BY J.E.D. | |
| DSGN. BY W.W. | JOB No. 4102 | |
| DRN. BY A.W.H. | SHEET No. 14 OF 22 | SW2 - 14 |

