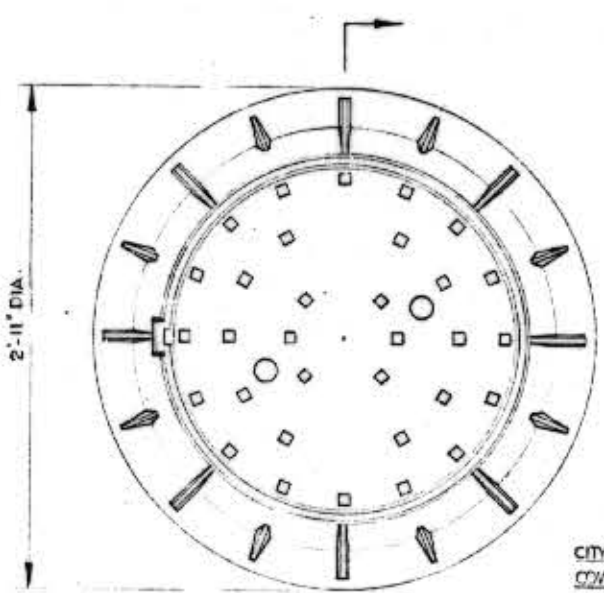
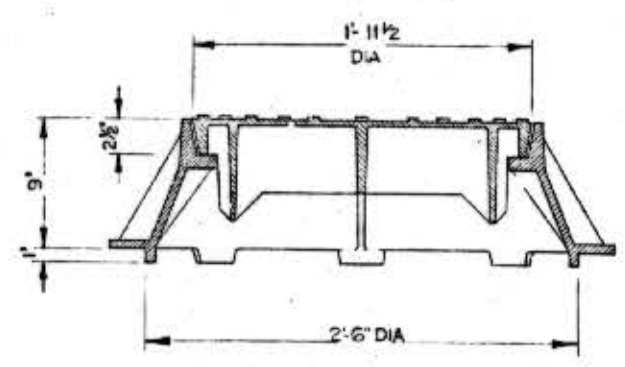


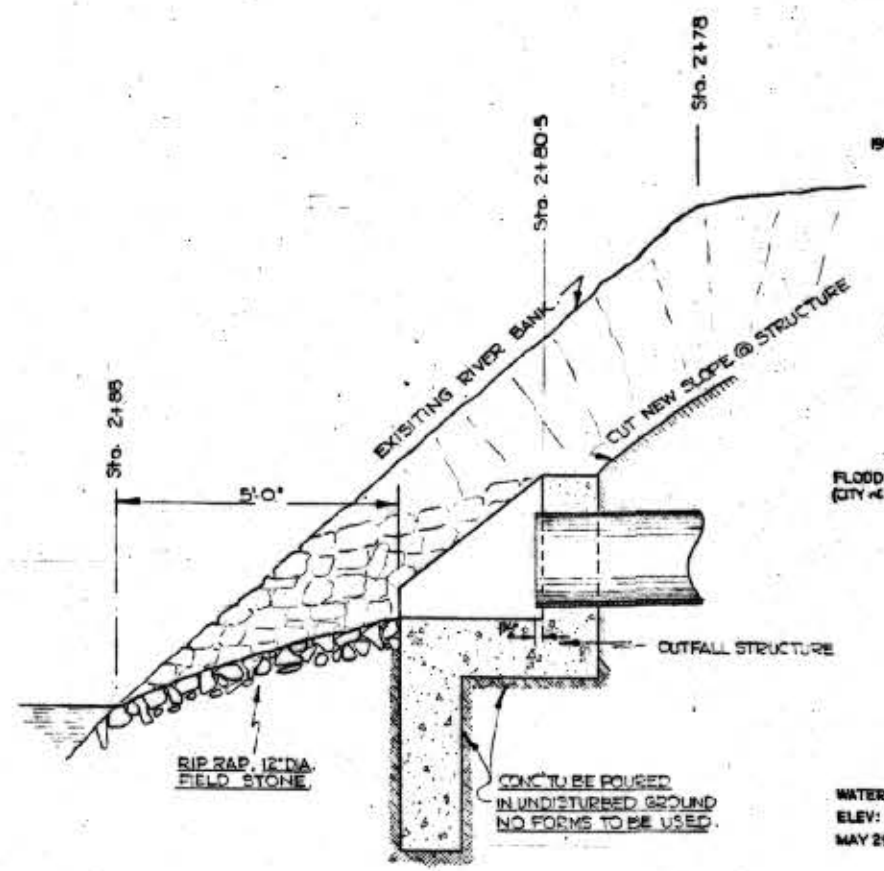
MANHOLE DETAILS
SCALE: 3/4" = 1'-0"



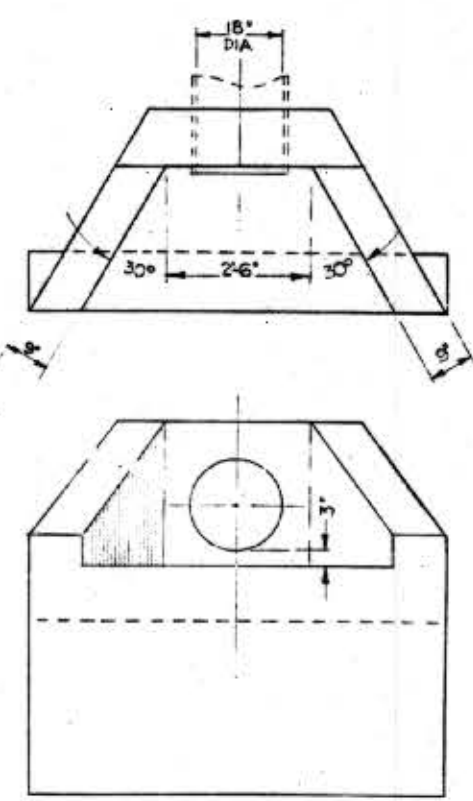
CITY OF WINNIPEG STANDARD MANHOLE COVER & FRAME, PATT. NR. M4246 & M4248
MANITOBA BRIDGE & ENGINEERING WORKS LIMITED
DETAIL MANHOLE COVER & FRAME
SCALE: 1/2" = 1'-0"



SECTION

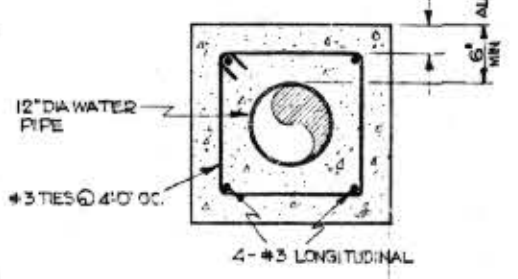


GENERAL ARRGT. OUTFALL STRUCTURE
SCALE: 1/2" = 1'-0"

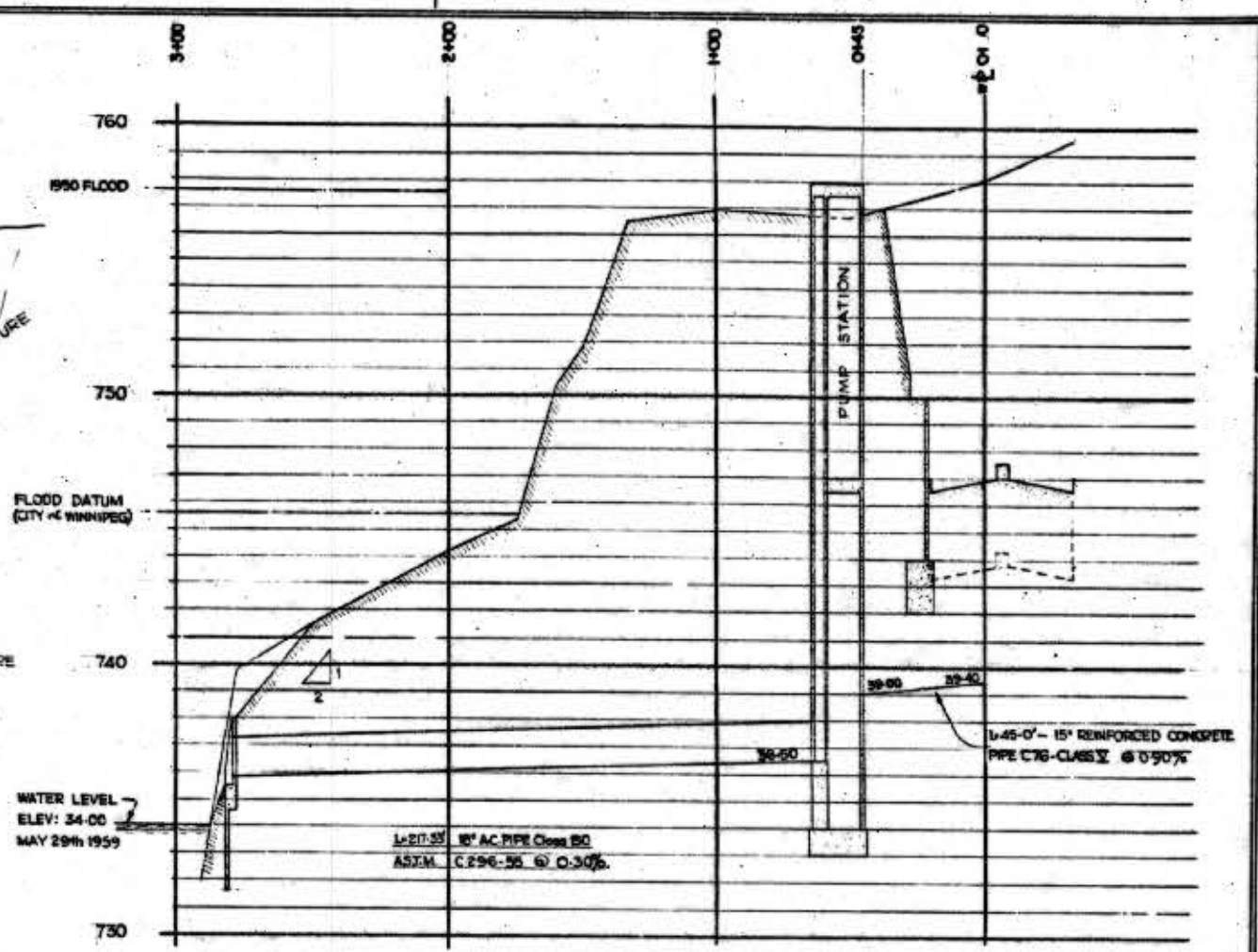


DETAIL OF OUTFALL STRUCTURE SCALE: 1/2" = 1'-0"

NOTE: REINFORCING STEEL TO BE #4 @ 12" BOTH WAYS



SECTION THROUGH CONC. ENCASEMENT
SCALE: 1" = 1'-0"
FOR LOCATION & PLAN SEE DRG. 4102



PROFILE of OUTFALL LINE (@ Sta. 7+70)
SCALE: HOR. 1" = 40'
VERT. 1" = 4'

	HADDIN, DAVIS & BROWN (MANITOBA) LIMITED CONSULTING ENGINEERS WINNIPEG, MANITOBA	
	CITY of ST. BONIFACE, MANITOBA ARCHIBALD ST. SUBWAY	
UTILITIES OUTFALL LINE and MANHOLE DETAILS		
AS CONSTRUCTED DATE SEPT 1959 DGN. BY W.W. DRN. BY A.W.H.	SCALE AS SHOWN DATE SEPT 1959 APP. BY J.E.D. JOB No. 4102 SHEET No. 15 OF 22	DWG. No. SW2-15

