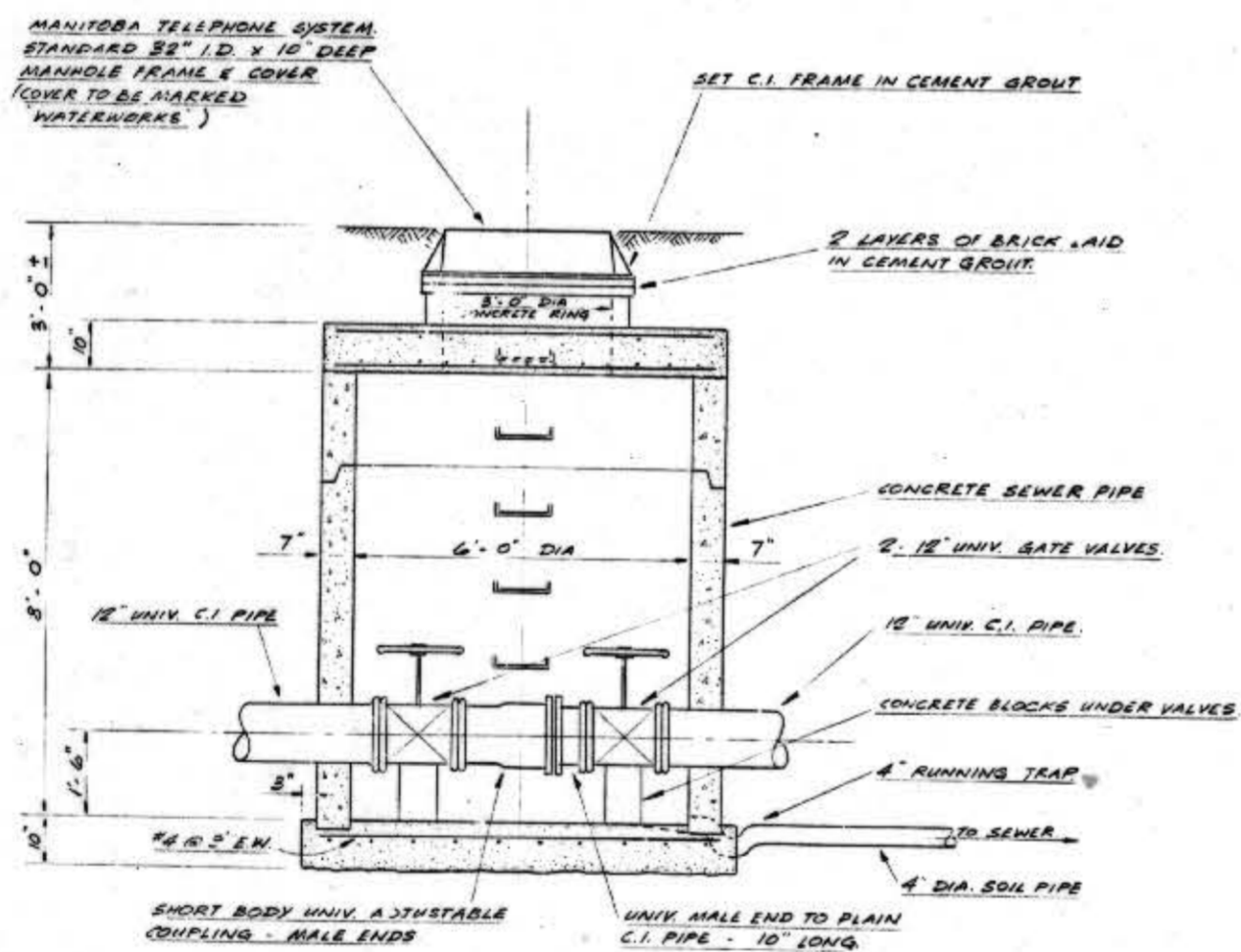
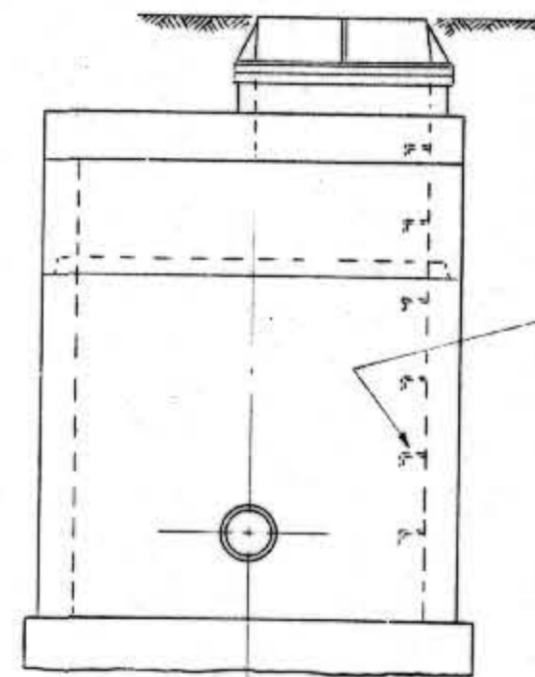


— PLAN —



— SECTIONAL ELEVATION —



— SIDE VIEW —

	HADDIN, DAVIS & BROWN (MANITOBA) LIMITED CONSULTING ENGINEERS WINNIPEG MANITOBA	
	CITY of ST. BONIFACE, MANITOBA. ARCHIBALD ST., SUBWAY	
	VALVE CHAMBER	
SCALE 1" = 1' DATE JULY 1960 DSGN. BY P. R. G. DWN. BY W. G.	AS CONSTRUCTED BULL # 5 REVISIONS DATE	DWG. No. CRD. BY P. R. G. APP. BY J. E. B. JOB No. 4102 SHEET No. OF SW2 - 25