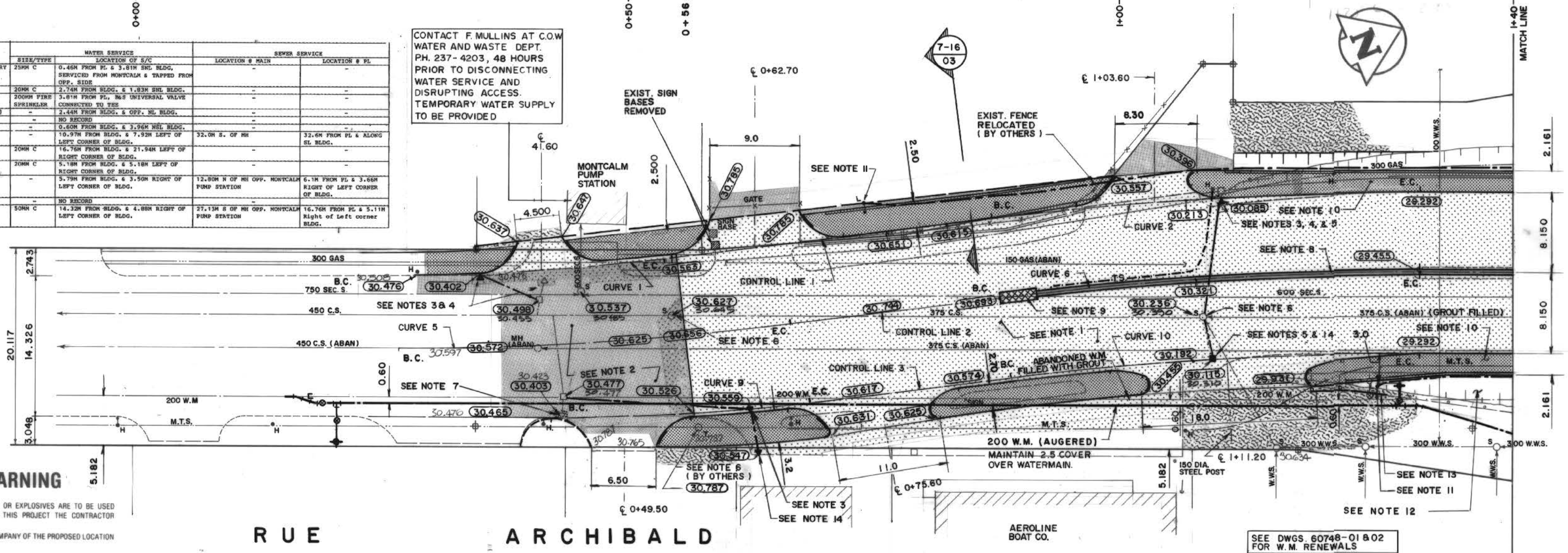


REID, CROWTHER & PARTNERS LIMITED
 WINNIPEG
AS CONSTRUCTED
 SIG. *[Signature]* DATE 85-12-18

ADDRESS	SIZE/TYPE	WATER SERVICE	SEWER SERVICE
8440 DESALABERRY	250H C	0.46M FROM FC & 3.81M END BLDG. SERVICED FROM MONTCALM & TRAPPED FROM OFF. SIDE	
819 WATT	200H C	2.74M FROM BLDG. & 1.83M END BLDG.	
819 WATT	200H FIBR	3.81M FROM FC. NEAR UNIVERSAL VALVE SPRINKLER CONNECTED TO TIE	
820 WATT (AYCO)	-	2.44M FROM BLDG. & OFF. HL. BLDG.	
827 WATT	-	NO RECORD	
830 WATT	-	0.50M FROM BLDG. & 3.96M END BLDG.	
874 ARCHIBALD	-	10.97M FROM BLDG. & 7.92M LEFT OF RIGHT CORNER OF BLDG.	32.0M S. OF RR
874 ARCHIBALD	200H C	16.76M FROM BLDG. & 21.94M LEFT OF RIGHT CORNER OF BLDG.	32.6M FROM PL & ALONG SL. BLDG.
826 ARCHIBALD	200H C	5.78M FROM BLDG. & 5.18M LEFT OF RIGHT CORNER OF BLDG.	
834 ARCHIBALD	-	5.78M FROM BLDG. & 3.96M RIGHT OF LEFT CORNER OF BLDG.	12.80M N. OF RR OFF. MONTCALM PUMP STATION
841 ARCHIBALD	-	NO RECORD	
846 ARCHIBALD	50H C	14.32M FROM BLDG. & 4.88M RIGHT OF LEFT CORNER OF BLDG.	27.13M S. OF RR OFF. MONTCALM PUMP STATION

CONTACT F. MULLINS AT C.O.W. WATER AND WASTE DEPT. PH. 237-4203, 48 HOURS PRIOR TO DISCONNECTING WATER SERVICE AND DISRUPTING ACCESS. TEMPORARY WATER SUPPLY TO BE PROVIDED



- CONSTRUCTION NOTES**
- REMOVED EXISTING 200 MM REINFORCED CONCRETE PAVEMENT C/W ASPHALT OVERLAY AND CONSTRUCTED NEW 230 MM (REINFORCED) CONCRETE PAVEMENT.
 - REMOVED EXISTING ASPHALT PAVEMENT OVERLAY AND RESURFACED WITH NEW ASPHALT PAVEMENT OVERLAY.
 - INSTALLED NEW CURB AND GUTTER INLET C/W NEW 250 MM LEAD.
 - ABANDONED EXISTING DRAINAGE INLET.
 - ABANDONED EXISTING CATCHBASIN.
 - ADJUSTED MANHOLE TO GRADE.
 - ADJUSTED EXISTING CURB AND GUTTER INLET TO GRADE.
 - CONSTRUCTED CONCRETE TRAFFIC BARRIERS. SEE DRAWING U205-85-09 FOR DETAILS.
 - INSTALLED G.R.E.A.T. BARRIER UNIT. SEE DRAWINGS U205-85-14 AND U205-85-15 FOR DETAILS.
 - CONSTRUCTED NEW 150 MM UNDERPASS SIDEWALK SLAB C/W HANDRAIL. SEE DRAWING U205-85-07 AND U205-85-08 FOR DETAILS.
 - INSTALLED NEW STREETLIGHT STANDARD (BY OTHERS).
 - REGRADED EMBANKMENT TO SUIT.
 - REMOVED EXISTING FLEX-BEAM GUARDRAIL.
 - INSTALLED NEW GUTTER INLET C/W NEW 250 MM LEAD.

- REFERENCE NOTES**
- SEE DRAWING U205-85-02 FOR GEOMETRIC LAYOUT.
 - LEGAL PLAN SHEET NO. Y27.
 - GBM 27-013 ELEVATION 232.760.
 - ADD 200.000 TO OBTAIN GEODETIC DATUM.
 - PAVEMENT DIMENSIONS ARE TO BACK OF CURB.
 - RCPL FIELD BOOK NOS. 3093, 3159, 3193 AND 3194.

EXISTING	LEGEND-PLAN	PROPOSED	EXISTING	LEGEND-PLAN	PROPOSED	EXISTING	LEGEND-PROFILE	PROPOSED
150 mm W.M.	WATERMAIN	150 mm W.M.	HYDRO	M.T.S.	CONCRETE PAVT.	300 mm L.D.S.	LAND DRAINAGE SEWER	300 mm L.D.S.
300 mm L.D.S.	LAND DRAINAGE SEWER	250 mm SEC. S.	250 mm SEC. S.	MANHOLE	CATCH BASIN	32.000	CURB INLET	JUNCTIONS
250 mm SEC. S.	SECONDARY SEWER	32.000	S.L.	T.S.	SURVEY BAR	GAS		
300 mm L.D.S.	LAND DRAINAGE SEWER	250 mm SEC. S.	PROPERTY LINE	GRAVEL SURFACING	SIDEWALK RAMP	ELEVATIONS	CONCRETE SIDEWALK	STREET LIGHTING
250 mm SEC. S.	SECONDARY SEWER	32.000	CONCRETE SIDEWALK	STREET LIGHTING	TRAFFIC SIGNALS			
300 mm L.D.S.	LAND DRAINAGE SEWER	250 mm SEC. S.	WASTE WATER SEWER	Q PAVEMENT	WEST GUTTER	EAST GUTTER	WEST SIDEWALK	EAST PROPERTY LINE
250 mm SEC. S.	SECONDARY SEWER	32.000	PRIVATE WALK / SILL					

LOCATION APPROVED UNDERGROUND STRUCTURES
 L. R. VIGFUSSON
 SUPV. U&S STRUCTURES COMMITTEE

NOTE:
 LOCATION OF UNDERGROUND STRUCTURES AS SHOWN ARE BASED ON THE BEST INFORMATION AVAILABLE BUT NO GUARANTEE IS GIVEN THAT ALL EXISTING UTILITIES ARE SHOWN OR THAT THE GIVEN LOCATIONS ARE EXACT. CONFIRMATION OF EXISTENCE AND EXACT LOCATION OF ALL UTILITIES MUST BE OBTAINED FROM THE INDIVIDUAL UTILITIES BEFORE PROCEEDING WITH CONSTRUCTION

PROVINCE OF MANITOBA
 85-0422
L. R. VIGFUSSON
 REGISTERED ENGINEER

Reid Crowther
 DESIGNED BY: L.R.V.
 CHECKED BY: D.R.K.
 APPROVED BY: *[Signature]*

Reid Crowther & Partners Ltd.
 ENGINEERS-SCIENTISTS

DRAWN BY: P.A.L./R.A.C.
 DATE: 85 02 11
 JOB NO: 60709-04

THE CITY OF WINNIPEG
 WORKS & OPERATIONS DIVISION
 STREETS & TRANSPORTATION DEPARTMENT

RUE ARCHIBALD UNDERPASS
 C.P.R. KEEWATIN SUBDIVISION
 PAVEMENT RECONSTRUCTION AND RELATED WORKS

RUE ARCHIBALD
 STA. 0+00 TO STA. 1+40

AUTHORIZED BY: *[Signature]* 1985-04-30
 ACCEPTED BY: *[Signature]* 1985-04-30
 SCALE: HOR. 1:250 VER. 1:10
 DRAWING NO: U205-85-03

METRIC
 WHOLE NUMBERS INDICATE MILLIMETRES
 DECIMALIZED NUMBERS INDICATE METRES

SEE DWGS 60748-01 & 02 FOR W.M. RENEWALS

CANADIAN CELLULOSE INSULATION MAN. LTD.