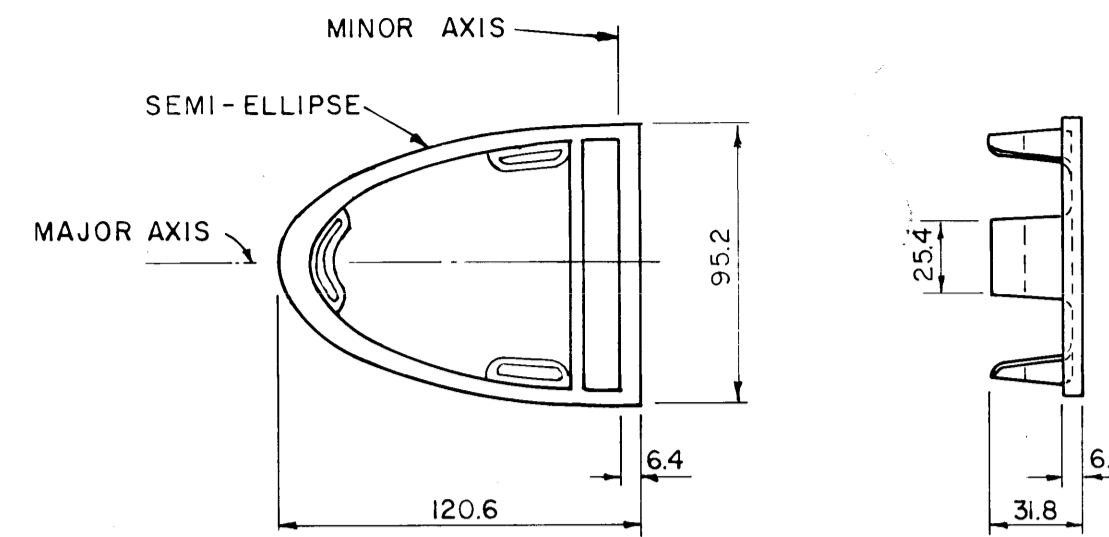
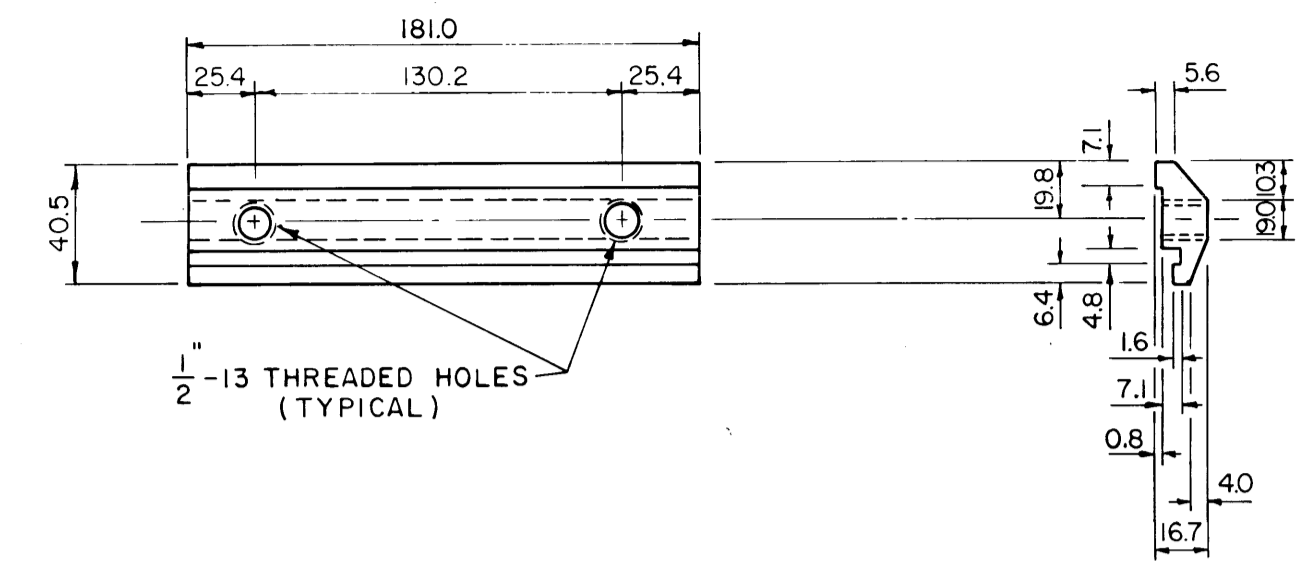


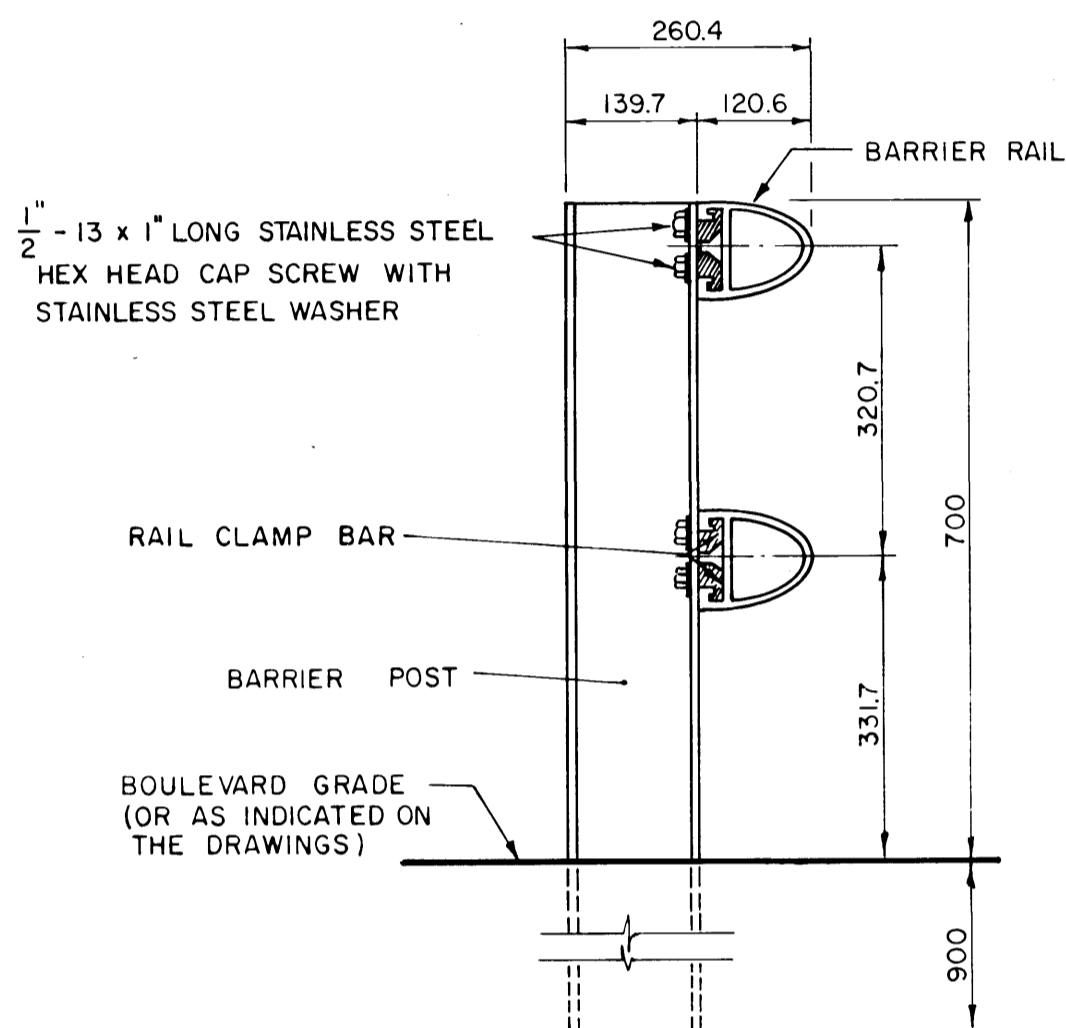
SPLICE BAR TO RAIL ASSEMBLY DETAIL



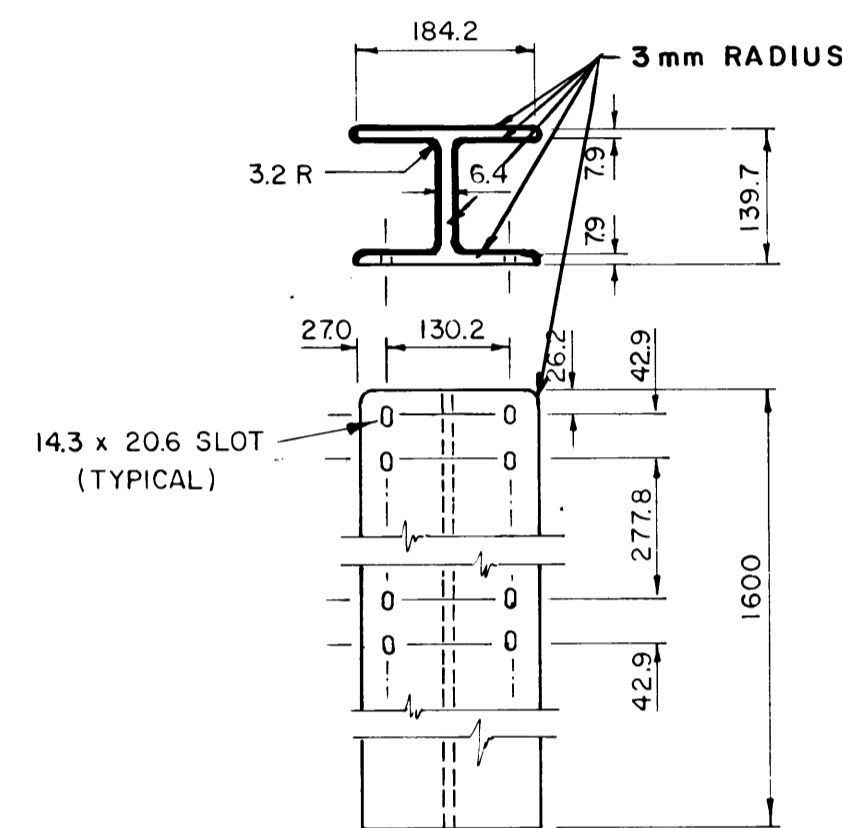
RAIL END CAP



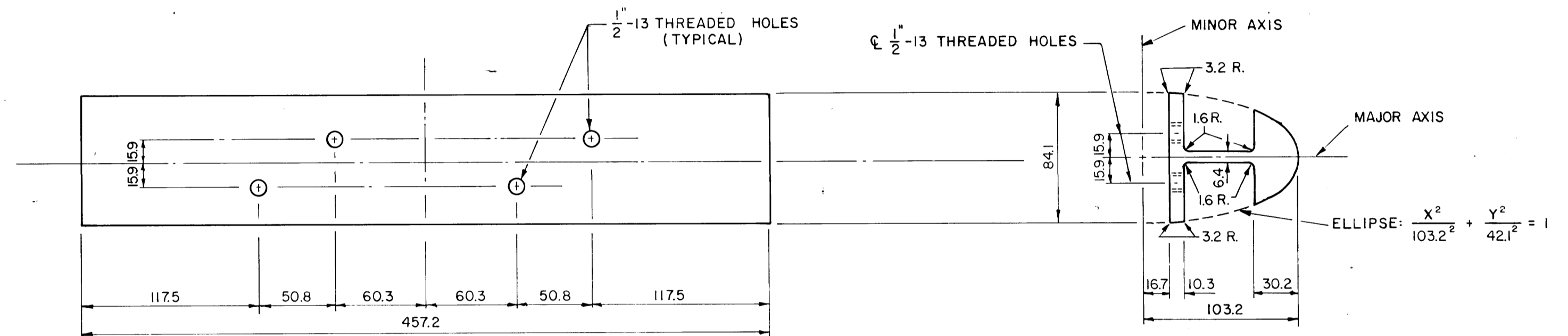
RAIL CLAMP BAR



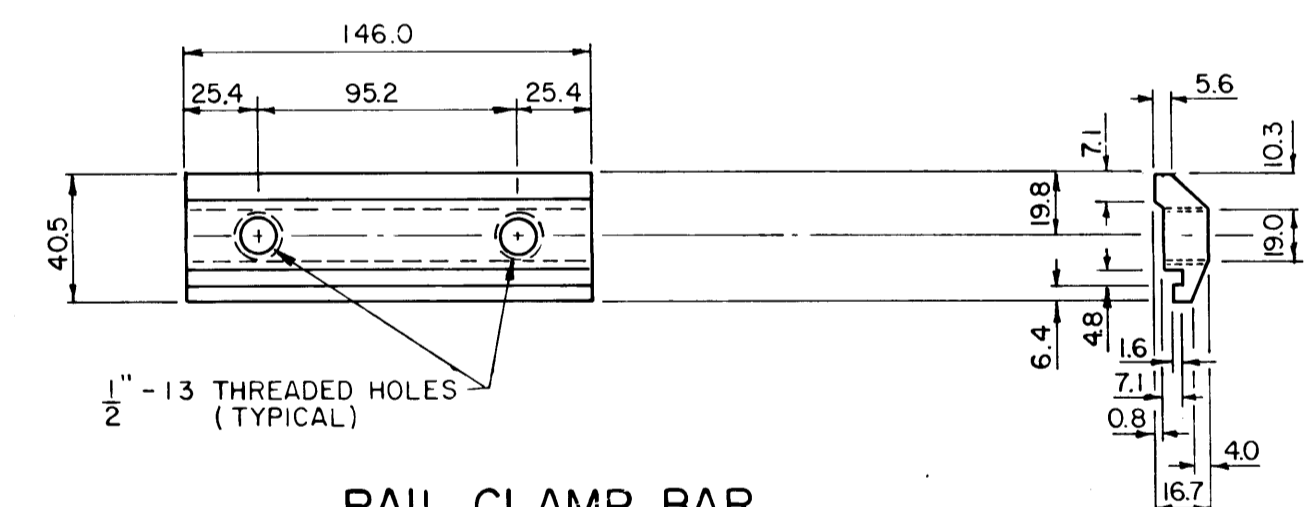
RAIL TO POST ASSEMBLY DETAIL



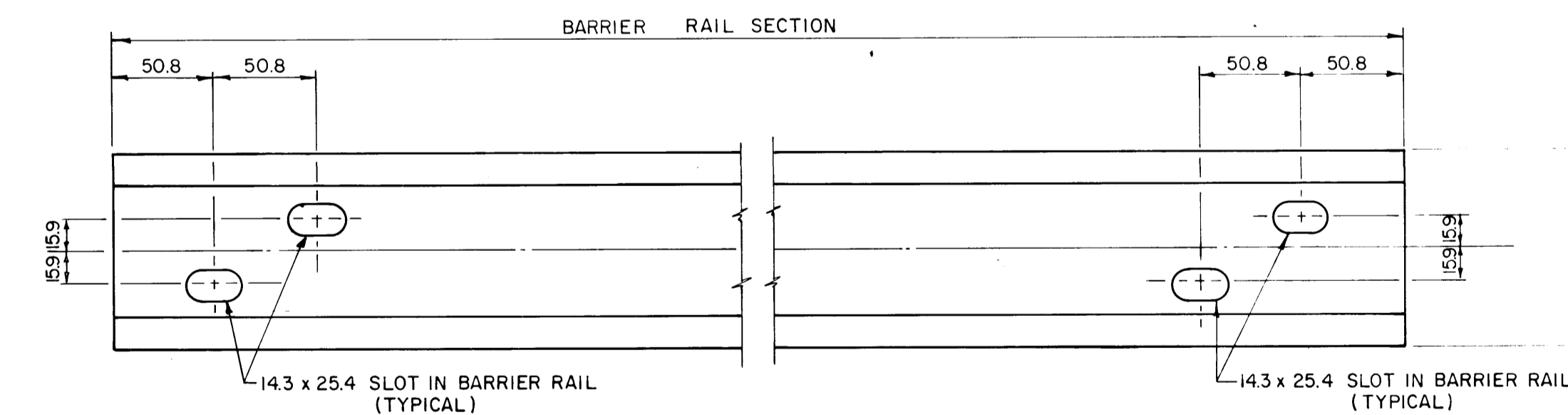
1600 m POST
(0800 m POST SIMILAR EXCEPT WITH ONLY FOUR SLOTS AT TOP OF POST)



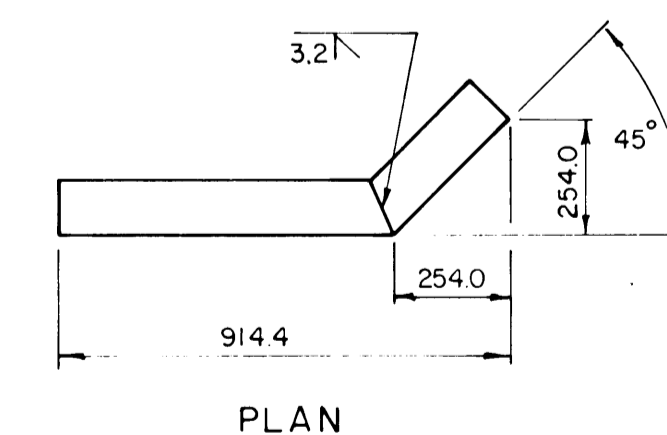
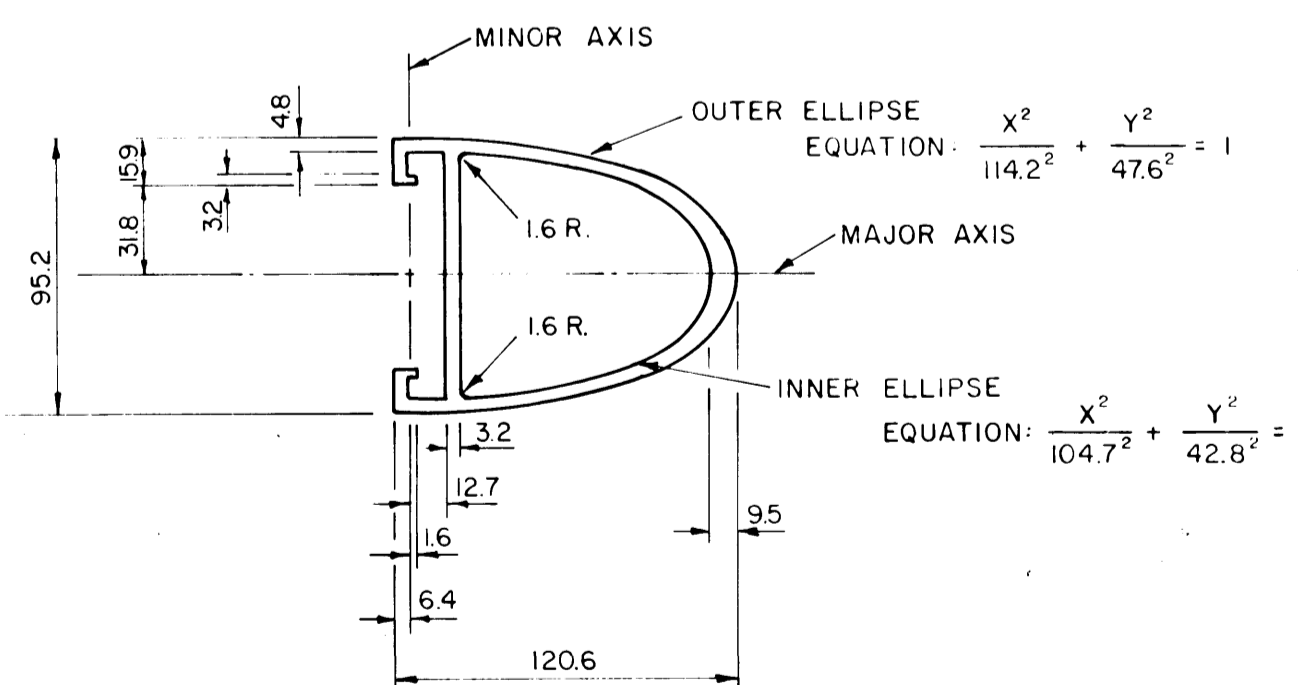
SPLICE BAR



RAIL CLAMP BAR
(FOR BR 1 C BRIDGE RAIL POST)



BARRIER RAIL



PLAN



FRONT ELEVATION

TERMINAL END
(FABRICATED FROM BARRIER RAIL)

REID, CROWTHER & PARTNERS LIMITED
WINNIPEG
AS CONSTRUCTED
SIGNATURE: *Alfred K. Roy* DATE: 88-12-18

MATERIAL SPECIFICATIONS

- ALUMINUM RAILS, POSTS, SPLICE BARS, CLAMP BARS, AND END CAPS SHALL CONFORM TO ASTM B221, ALLOY 6061-T6, OR ALLOY 6351-T6.
- STAINLESS STEEL WASHERS SHALL CONFORM TO ASTM A296.
- CAP SCREWS SHALL CONFORM TO ASTM A276, TYPE 430 STAINLESS STEEL.
- NOTE THAT ALL FASTENERS ARE SPECIFIED IN IMPERIAL UNITS.

METRIC

ALL DIMENSIONS SHOWN ON THIS PLAN ARE IN MILLIMETRES EXCEPT AS OTHERWISE INDICATED

NO.	REVISIONS	DATE	APP.	ENGINEER'S SEAL
3	AS CONSTRUCTED	Nov 05	<i>AWK</i>	
R2	RE-DRAWN	83-12-21	<i>AWK</i>	
R1	BRIDGE RAIL CLAMP BAR ADDED	83-6-16	<i>AWK</i>	

STREETS & TRAFFIC BRANCH

DESIGNED BY N. A.	DRAWN BY GFN
CHECKED BY ZVK	DATE 80-03-18
APPROVED BY <i>AWK</i>	DATE 83-12-22

THE CITY OF WINNIPEG
WORKS & OPERATIONS DIVISION
STREETS & TRANSPORTATION DEPARTMENT

RUE ARCHIBALD UNDERPASS C.P.R. KEEWATIN SUBDIVISION PAVEMENT RECONSTRUCTION AND RELATED WORKS
BALANCED SHOULDER BARRIER STANDARD DETAIL
APPROVED BY <i>Winnipeg, P. En</i> 1983-12-23
ACCEPTED BY <i>Alfred K. Roy</i> 1983-12-22
SCALE: N. T. S. DRAWING NO: U205-85-11

B-5539-11