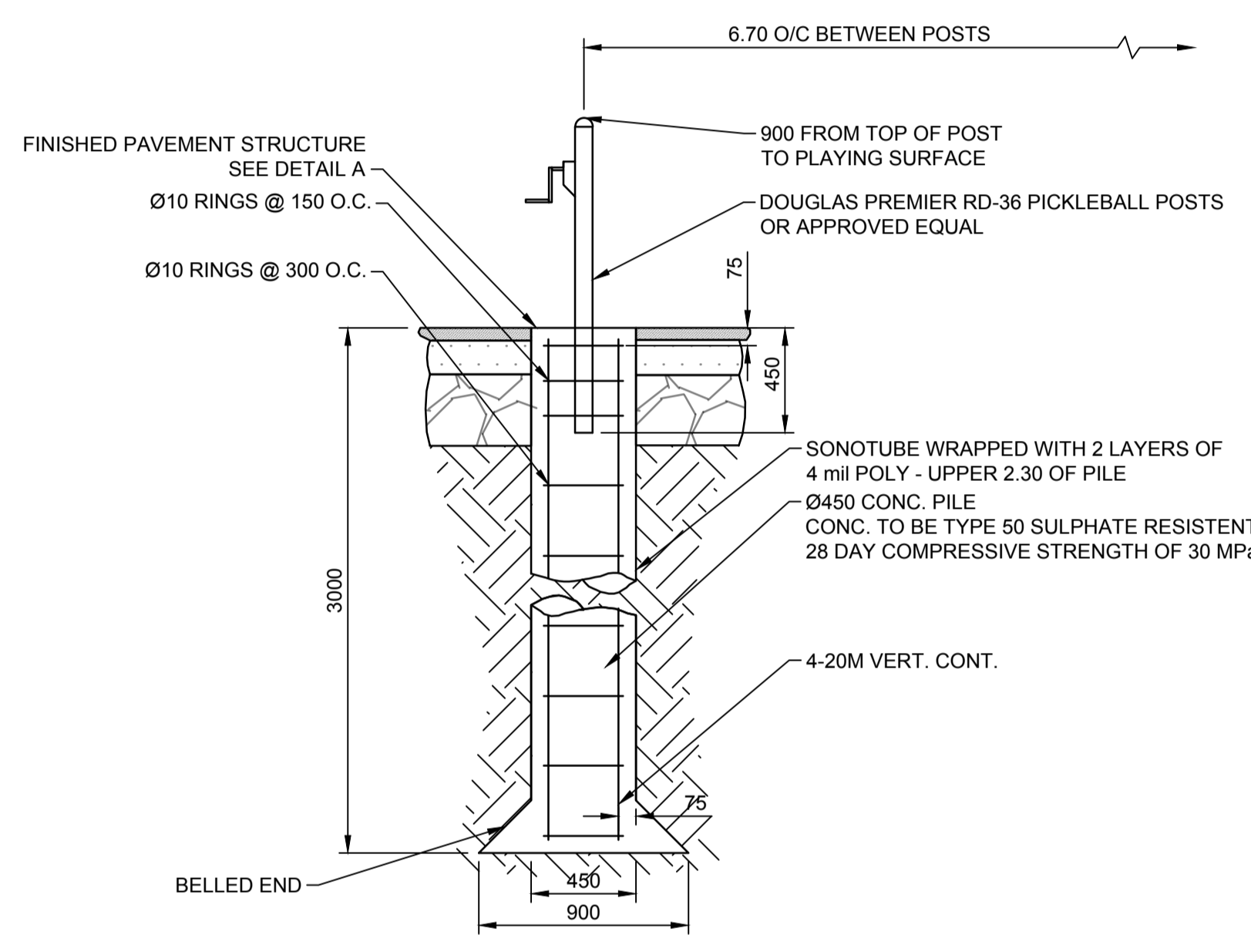
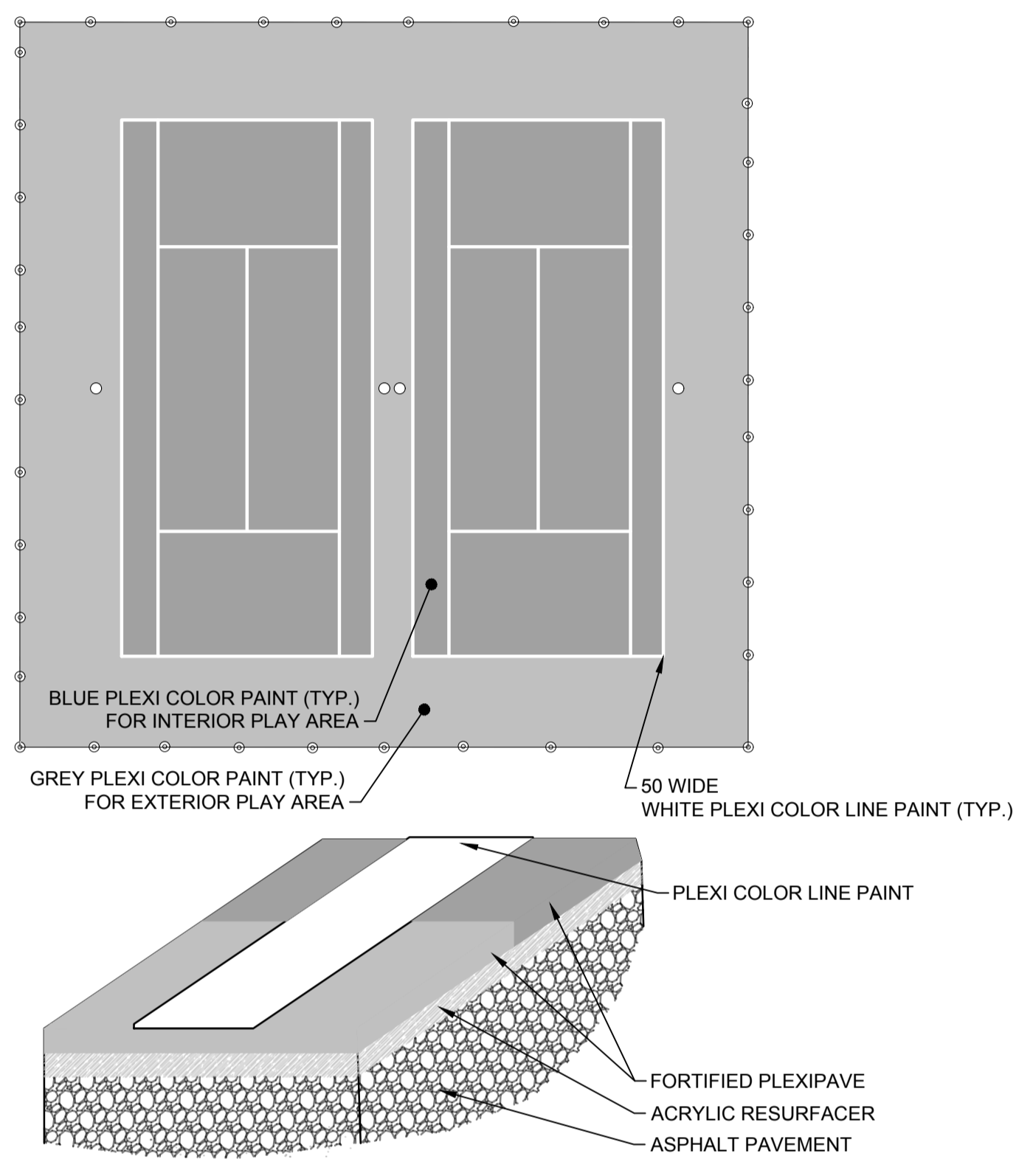


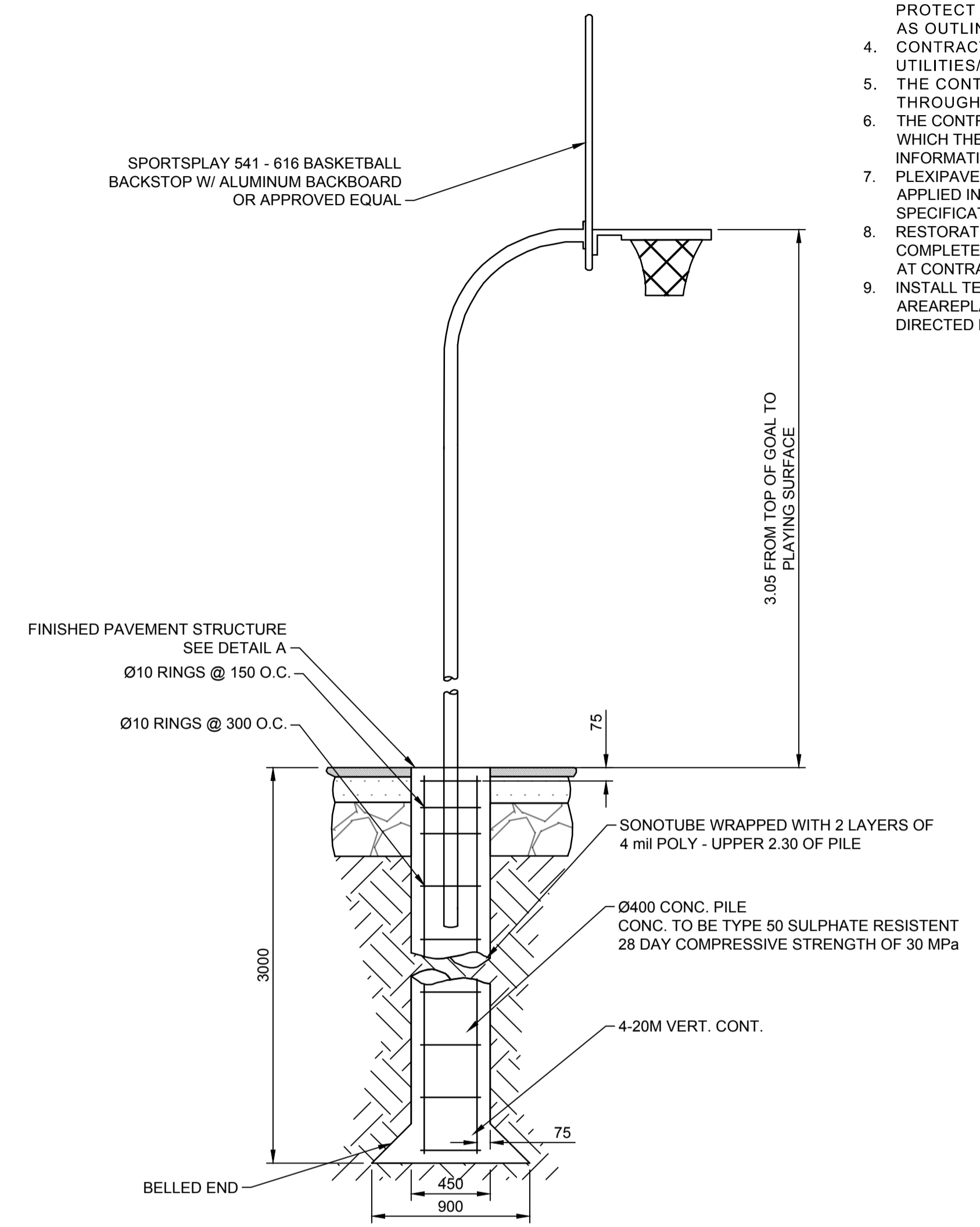
- NOTES:**
1. THE CONTRACTOR SHALL OBTAIN ALL NECESSARY PERMITS, PAY ALL NECESSARY FEES AND GIVE ALL NECESSARY NOTICES.
 2. REMOVE SURROUNDING FENCE AND POSTS AROUND RECONSTRUCTION. REINSTALL FENCE AND NEW POSTS SURROUNDING RECONSTRUCTION.
 3. CONTRACTOR SHALL TAKE PRECAUTIONARY STEPS TO PROTECT EXISTING TREES WITHIN THE LIMITS OF ACTIVITIES AS OUTLINED IN THE SPECIFICATIONS
 4. CONTRACTOR TO CONFIRM THE LOCATION OF ALL UTILITIES/SERVICES IN THE FIELD PRIOR TO CONSTRUCTION
 5. THE CONTRACTOR SHALL PROVIDE CONSTRUCTION LAYOUT THROUGHOUT THE PROJECT.
 6. THE CONTRACTOR SHALL MAINTAIN ONE SET OF PLANS ON SITE IN WHICH THE CONTRACTOR SHALL CLEARLY NOTE ALL AS-BUILT INFORMATION AS THE PROJECT PROGRESSES
 7. PLEXIPAVE SURFACING AND COLOR LINE PAINTING SHALL BE APPLIED IN ADHERENCE TO MANUFACTURERS DIRECTIONS AND SPECIFICATIONS.
 8. RESTORATION OF THE SITE TO EQUAL OR BETTER CONDITION TO BE COMPLETED IMMEDIATELY FOLLOWING CONSTRUCTION ACTIVITIES AT CONTRACTORS EXPENSE.
 9. INSTALL TEMPORARY FENCING AROUND CONSTRUCTION AREAREPLACEMENT OF FENCE POSTS TO BE DETERMINED BY AND DIRECTED BY THE CONTRACT ADMINISTRATOR



C PICKLE BALL POSTS (TYP.)
Scale: 1:25



D PLEXIPAVE (TYP.)
Scale: NTS



E BASKETBALL STANDARD (TYP.)
Scale: 1:25

WARNING

IF POWER EQUIPMENT OR EXPLOSIVES ARE TO BE USED FOR EXCAVATION ON THIS PROJECT THE CONTRACTOR MUST:

1. NOTIFY THE GAS COMPANY OF THE PROPOSED LOCATION OF EXCAVATION.
2. TAKE PRECAUTION TO AVOID DAMAGE TO GAS COMPANY INSTALLATIONS SEE PROVINCIAL REGULATION 210/72 FOR DETAILS.
3. OBTAIN EXCAVATION PERMITS PRIOR TO CONSTRUCTION.

METRIC

WHOLE NUMBERS INDICATE MILLIMETRES
DECIMALIZED NUMBERS INDICATE METRES

150 mm WM	WATERMAIN	150 mm WM	HYDRO	--- --	--- --	--- --	--- --	--- --	--- --
300 mm LDS	LAND DRAINAGE SEWER	300 mm LDS	GRANULAR	--- --	--- --	--- --	--- --	--- --	--- --
250 mm WWS	WASTE WATER SEWER	250 mm WWS	LIMIT OF ASPHALT	--- --	--- --	--- --	--- --	--- --	--- --
Ø	MANHOLE	●	CURB RENEWAL	--- --	--- --	--- --	--- --	--- --	--- --
□	CATCH BASIN	■	ASPHALT	--- --	--- --	--- --	--- --	--- --	--- --
△	CURB INLET	▲	ELEVATIONS	31.000	(99.892)	---	---	---	---
☆	HYDRO POLES	⊕	PROPERTY LINE	---	---	---	---	---	---
○	LAMP STANDARD	⊙	SURVEY BAR	---	---	---	---	---	---
∞	GAS	∞	CURB STOP	---	---	---	---	---	---
---	LEGEND - PLAN	---	RAMP CURB	---	---	---	---	---	---
---	LEGEND - PLAN	---	LEGEND - PLAN	---	---	---	---	---	---

UNDERGROUND STRUCTURES		B.M. ELEV.
SUPV. U/G STRUCTURES COMMITTEE	DATE	
NOTE: LOCATION OF UNDERGROUND STRUCTURES AS SHOWN ARE BASED ON THE BEST INFORMATION AVAILABLE, BUT NO GUARANTEE IS GIVEN THAT ALL EXISTING UTILITIES ARE SHOWN OR THAT THE GIVEN LOCATIONS ARE EXACT. CONFIRMATION OF EXISTENCE AND EXACT LOCATION OF ALL SERVICES MUST BE OBTAINED FROM THE INDIVIDUAL UTILITIES BEFORE PROCEEDING WITH CONSTRUCTION.		
1	ISSUED FOR TENDER	16/06/20 PRD
0	ISSUED FOR REVIEW	16/06/08 PRD
NO.	REVISIONS	YYMMDD BY

URBAN DESIGN DIVISION PARKS PLANNING & DEVELOPMENT			
DESIGNED BY	PRD	CHECKED BY	CRH
DRAWN BY	PRD	APPROVED BY	RGZ
HOR. SCALE:	AS SHOWN	RELEASED FOR CONSTRUCTION	
VERTICAL:	AS SHOWN	DATE	
DATE	16/06/08		

PROFESSIONAL'S SEAL

PRELIMINARY

NOT FOR CONSTRUCTION

CONSULTANT PROJECT NUMBER

N/A

THE CITY OF WINNIPEG
PLANNING, PROPERTY & DEVELOPMENT DEPARTMENT

2016 PREP CAPITAL PROGRAM

LAFLECHE PARK - 17 SINNOTT ST
DETAIL PLAN

BID OPPORTUNITY NUMBER
598-2016

SHEET 4 OF 4

CITY DRAWING NUMBER
L.45G

V:\Design\Branch\Projects\2016_9_Lafleche_&_St_Germain_Tennis_Court\0300_drawing\0300_sheets\0304_sheets\0304_sheets\0304_sheets\0304_sheets\0304_sheets.dwg 6/17/2016 3:20 PM