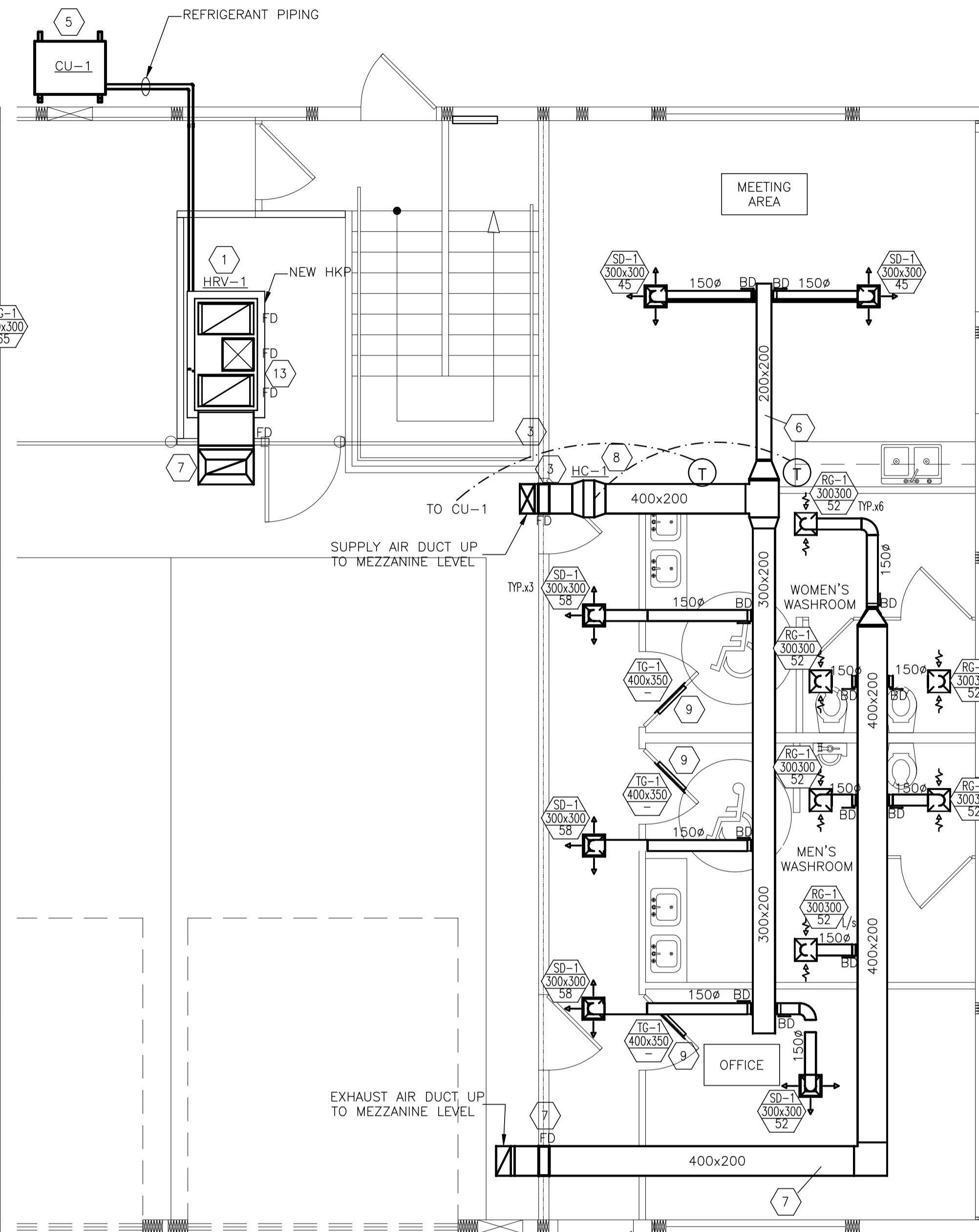


**A** MEZZANINE LEVEL PART PLAN - HVAC LAYOUT  
M2.0 SCALE 1 = 50



**B** MAIN FLOOR PART PLAN - HVAC LAYOUT  
M2.0 SCALE 1 = 50

**GENERAL NOTES**

1. THE CONTRACTOR SHALL BE RESPONSIBLE FOR ANY WORK NOT EXPLICITLY SET OUT IN THE CONTRACT DOCUMENTS BUT WHICH MAY BE REASONABLY IMPLIED FOR THE PROPER COMPLETION OF THE WORK.
2. THESE PLANS ARE SCHEMATIC IN NATURE AND INDICATE THE APPROXIMATE AND GENERAL LOCATION OF THE WORK. CONTRACTOR SHALL INSTALL WORK THROUGH COORDINATION WITH OTHER TRADES AND TO SUIT FIELD CONDITIONS.
3. CONTRACTOR SHALL COORDINATE WITH SUBCONTRACTORS TO ENSURE ANY MULTI DISCIPLINE NOTES OR DETAILS ARE REVIEWED BY ALL SUBCONTRACTORS PRIOR TO BID SUBMISSION, A LATER CLAIM SUBMITTED BY THE CONTRACTOR FOR AN ADDITION TO THE CONTRACT PRICE BECAUSE OF CHANGES IN WORK NECESSITATED DUE TO A LACK OF COORDINATION WILL NOT BE ACCEPTED.
4. COORDINATE WORKS WITH OTHER SUBCONTRACTORS. REFER TO SPECIFIC DETAILS FOR CUTTING AND SEALING PENETRATIONS THROUGH OPENINGS & FIRE SEPARATIONS.
5. REFER TO TECHNICAL SPECIFICATIONS FOR EQUIPMENT AND MATERIAL SPECIFICATIONS AND INSTALLATION REQUIREMENTS.
6. INSULATE DUCTWORK WHERE INDICATED AND SPECIFIED.
7. PERFORM ALL WORKS IN ACCORDANCE WITH NATIONAL BUILDING CODE, TO SMACNA & ASHRAE STANDARDS, ALL LOCAL CODES, BYLAWS & STANDARDS, AND THE REQUIREMENTS OF THE AUTHORITY HAVING JURISDICTION.
8. SUPPORT ALL DUCTWORK TO MEET CODE REQUIREMENTS & ESTABLISHED INDUSTRY TRADE PRACTICES. (SMACNA, ASHRAE).
9. PERFORM ALL CUTTING & PATCHING NECESSARY FOR ANY REQUIRED OPENINGS.
10. PROVIDE TAB TO ENSURE AIR DISTRIBUTION TO VOLUMES INDICATED.
11. CONTRACTOR TO PAY FOR AND OBTAIN ALL NECESSARY BUILDING, MECHANICAL AND ELECTRICAL PERMITS/INSPECTIONS REQUIRED BY AUTHORITIES HAVING JURISDICTION.

**KEY NOTES**

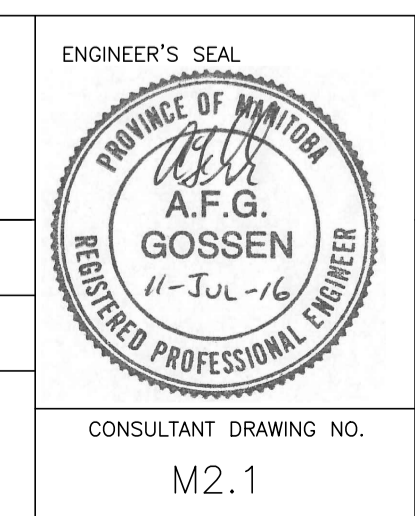
1. NEW HRV-1 LOCATED IN NEW MECHANICAL ROOM; MECHANICAL ROOM PROVIDED BY OTHERS. PROVIDE ALL SUPPORTS FOR UNIT ANCHORAGE IN ACCORDANCE WITH MANUFACTURER'S RECOMMENDATIONS. UNIT C/W 100mm HIGH CONCRETE PAD
2. NEW HRV-1 SUPPLY AIR/EXHAUST AIR OPENINGS COMPLETE WITH INTAKE/EXHAUST COWL IN FRAMED OPENING. INSULATED MOTORIZED DAMPER. DUCT RUN TO/FROM HRV-1 TO BE PROVIDED WITH 40 mm THICK INSULATING DUCT BLANKET. DUCT RISERS FROM HRV-1 ARE RUN AT HIGH LEVEL IN MEZZANINE AREA. PROVIDE ANY REQUIRED WOOD FRAME OPENINGS IN MEZZANINE FLOOR TO ACCOMMODATE DUCT RISERS.
3. SUPPLY AIR DUCT TO ADMIN AREA AT HIGH LEVEL IN MEZZANINE AREA. PROVIDE ANY REQUIRED WOOD FRAME OPENING IN MEZZANINE FLOOR TO ACCOMMODATE SUPPLY DUCT RISER. SUPPLY DUCT RUN TO/FROM HRV-1 AND SPACE TO BE PROVIDED WITH 40 mm THICK INSULATING DUCT BLANKET THROUGHOUT/ENTIRE LENGTH. CLEAR SPACE BETWEEN CEILING MEMBRANE AND LAY-IN-TILE CEILING IS ± 375 mm; COORDINATE FINAL DUCT RUNS AS DIRECTED BY CONTRACT ADMINISTRATOR. PROVIDE FIRE DAMPER C/W MAINTENANCE ACCESS DOOR AT WALL PENETRATIONS WITH FRR AND AS SHOWN; SEE FIRE DAMPER INSTALLATION DRAWING FOR DETAILS.
4. NEW DX COOLING COIL CC-1 IN SUPPLY AIR DUCT COMPLETE AT MEZZ. LEVEL, WITH INTEGRAL CONDENSATE DRAIN PAN AND 20 mm DRAIN LINE C/W INVERTED TRAP; FIELD RUN TO NEAREST SUITABLE FLOOR DRAIN
5. NEW AIR COOLED CONDENSING UNIT CU-1; CONDENSING UNIT CAPACITY TO BE MATCHED TO CC-1; SUPPORT CONDENSING UNIT USING GALVANIZED STEEL KNEE BRACE SUPPORTS ANCHORED TO CONCRETE GRADE BEAM; FASTEN KNEE BRACE TO GRADE BEAM WITH 75-mm, 10Ø DRILLED ANCHORS. EXCAVATE IN AREA OF CONDENSING UNIT TO FACILITATE KNEE BRACE INSTALLATION AND BACKFILL ONCE COMPLETE. FIELD RUN REFRIGERANT LINES BETWEEN CC-1 AND CU-1 IN ACCORDANCE WITH MANUFACTURER'S RECOMMENDATIONS; INSULATE HOT GAS AND LIQUID REFRIGERANT LINES WITH 13 mm THICK, CLOSED CELL FOAM INSULATION. ROUTE PIPING TO AVOID POTENTIAL MECHANICAL DAMAGE TO REFRIGERANT LINES.
6. SUPPLY AIR DUCT TO ADMIN AREA AT HIGH LEVEL IN MEZZANINE AND MAIN FLOOR AREAS. PROVIDE ANY REQUIRED WOOD FRAME OPENING IN MEZZANINE FLOOR TO ACCOMMODATE SUPPLY DUCT RISER. SUPPLY DUCT RUN TO/FROM HRV-1 AND SPACE TO BE PROVIDED WITH 40 mm THICK INSULATING DUCT BLANKET THROUGHOUT/ENTIRE LENGTH. CLEAR SPACE BETWEEN CEILING MEMBRANE AND LAY-IN-TILE CEILING IS ± 375 mm; COORDINATE FINAL DUCT RUNS AS DIRECTED BY CONTRACT ADMINISTRATOR (FINAL CONNECTIONS TO SUPPLY AIR DIFFUSER CAN BE MADE WITH 1.0m LENGTH OF FLEX DUCT). PROVIDE FIRE DAMPER C/W MAINTENANCE ACCESS DOOR AT WALL PENETRATIONS WITH FRR AND AS SHOWN. SEE FIRE DAMPER INSTALLATION DRAWING FOR DETAILS.
7. EXHAUST AIR DUCT TO ADMIN AREA AT HIGH LEVEL IN MEZZANINE AND MAIN FLOOR AREAS. PROVIDE ANY REQUIRED WOOD FRAME OPENING IN MEZZANINE FLOOR TO ACCOMMODATE SUPPLY DUCT RISER. EXHAUST DUCT RUN TO/FROM HRV-1 AND SPACE TO BE PROVIDED WITH 40 mm THICK INSULATING DUCT BLANKET THROUGHOUT/ENTIRE LENGTH. CLEAR SPACE BETWEEN CEILING MEMBRANE AND LAY-IN-TILE CEILING IS ± 375 mm; COORDINATE FINAL DUCT RUNS WITH ELECTRICAL TO AVOID INTERFERENCES MAKE ALLOWANCES FOR ADJUSTMENTS TO FINAL DUCT RUNS AND GRILLE LOCATIONS AS DIRECTED BY CONTRACT ADMINISTRATOR. (FINAL CONNECTIONS TO EXHAUST GRILLES CAN BE MADE WITH 1.0m LENGTH OF FLEX DUCT). PROVIDE FIRE DAMPER C/W MAINTENANCE ACCESS DOOR AT WALL PENETRATIONS WITH FRR AND AS SHOWN. SEE FIRE DAMPER INSTALLATION DRAWING FOR DETAILS.
8. ELECTRIC RE-HEAT COIL MOUNTED IN DUCTWORK COMPLETE WITH ALL SAFETY AND OPERATING CONTROLS. PROVIDE ANY NECESSARY DUCT TRANSITIONS ON SUPPLY AIR DUCT TO SUIT FINAL COIL DIMENSIONS. PROVIDE ACCESS DOORS FOR COIL SERVICE, TYP.
9. TURNOVER DOOR MOUNTED TRANSFER GRILLES TO OWNER FOR MOUNTING BY DOOR SUPPLIER.
10. ELECTRIC BASEBOARD HEATERS COMPLETE WITH REMOTE THERMOSTATS; BY ELECTRICAL
11. PROVIDE AND INSTALL NEW FIRE DAMPER WITHIN THE FLOOR PENETRATION C/W ACCESS DOOR. SEE FIRE DAMPER INSTALLATION DRAWING FOR DETAILS.
12. FIELD RUN HRV UNIT DRAIN, C/W/ TRAP, TO A COLLECTION BUCKET; NOTE DRAIN INV. ±20" FROM BASE OF UNIT



B.M. ELEV.	FIELD BOOK #:
POSTED TO LBIS	
DESIGNED BY	AFG
CHECKED BY	AFG
DRAWN BY	LM
HOR. SCALE	AS NOTED
VERTICAL	AS NOTED
NO. REVISIONS	DATE BY
1	REVISED & RE-ISSUED FOR TENDER & CONSTRUCTION 2016-07-11 AFG
0	ISSUED FOR TENDER & CONSTRUCTION 2016-06-30 AFG
B	ISSUED FOR 99% 2016-06-19 AFG
A	ISSUED FOR 33% CLIENT REVIEW 2016-05-13 AFG
NO.	REVISIONS DATE BY
	DATE 2016-06-15 DATE



DESIGNED BY	AFG	CHECKED BY	AFG
DRAWN BY	LM	APPROVED BY	AFG
HOR. SCALE	AS NOTED	RELEASED FOR CONSTRUCTION	
VERTICAL	AS NOTED		
NO.	REVISIONS	DATE	2016-06-15
		DATE	



**THE CITY OF WINNIPEG**  
WATER AND WASTE DEPARTMENT

SUPPLY & INSTALL OF HVAC SYSTEMS

HVAC PART PLANS

SHEET 1 OF 1

CITY DRAWING NUMBER 1-0601M-M0004-001