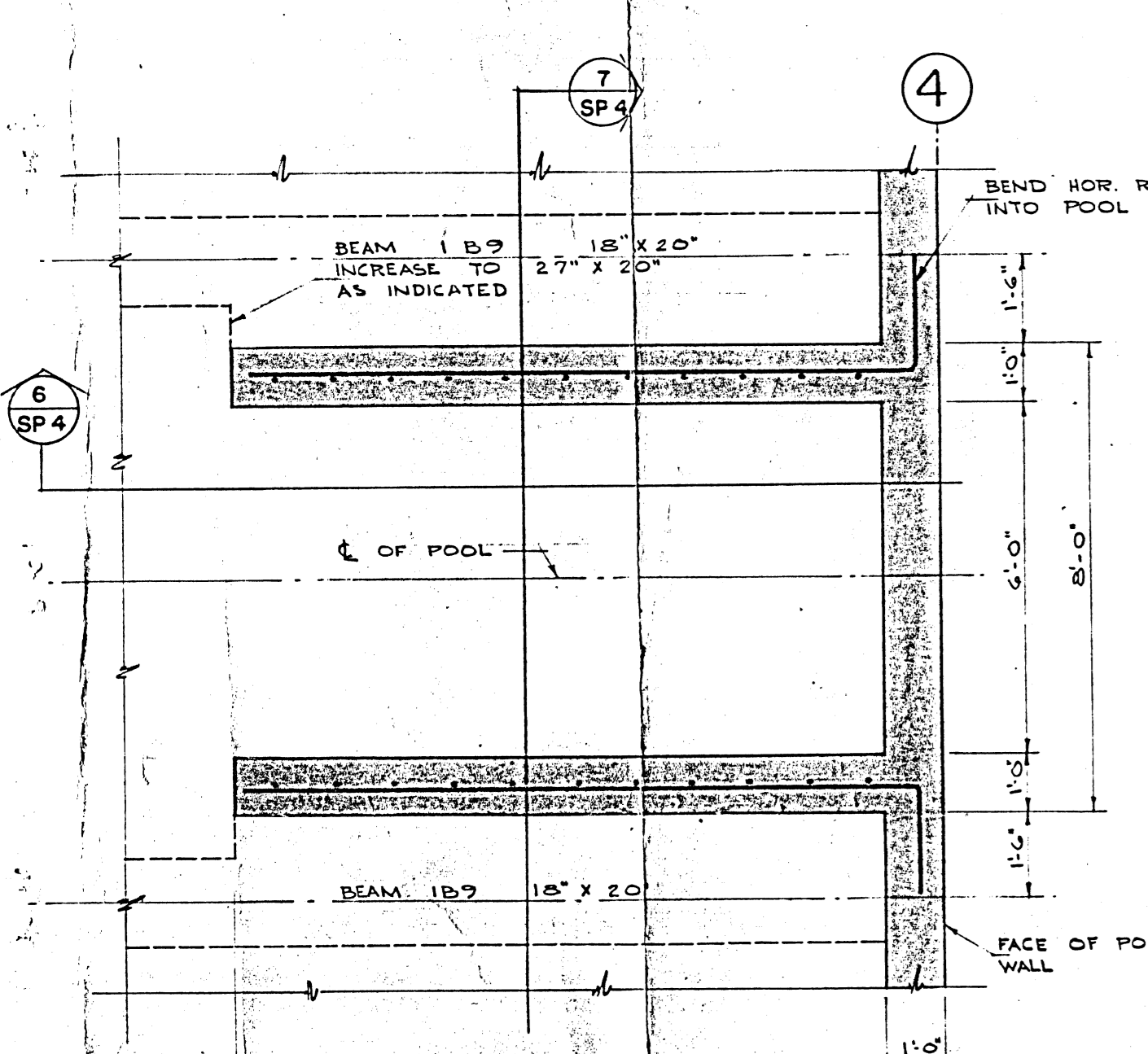
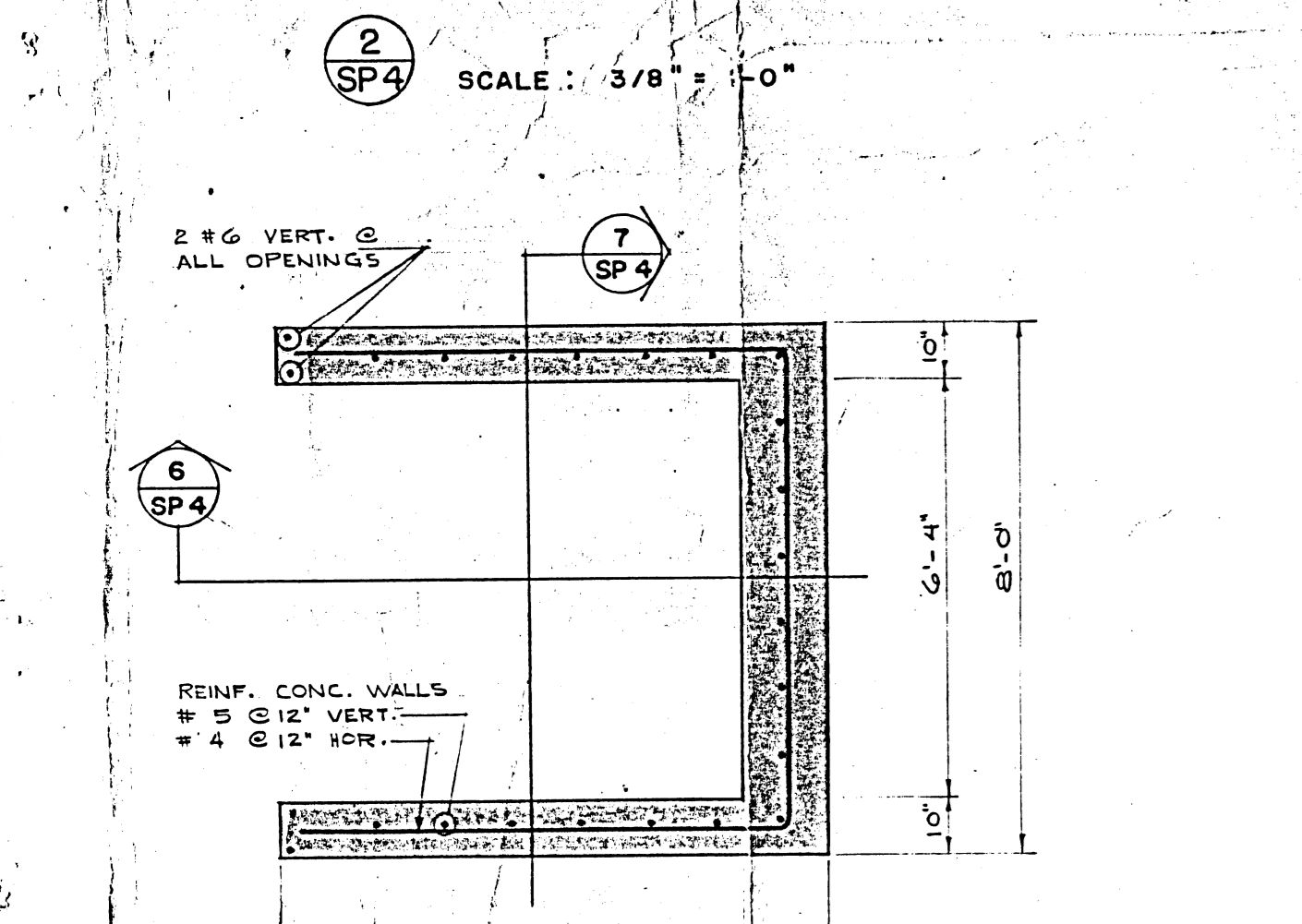


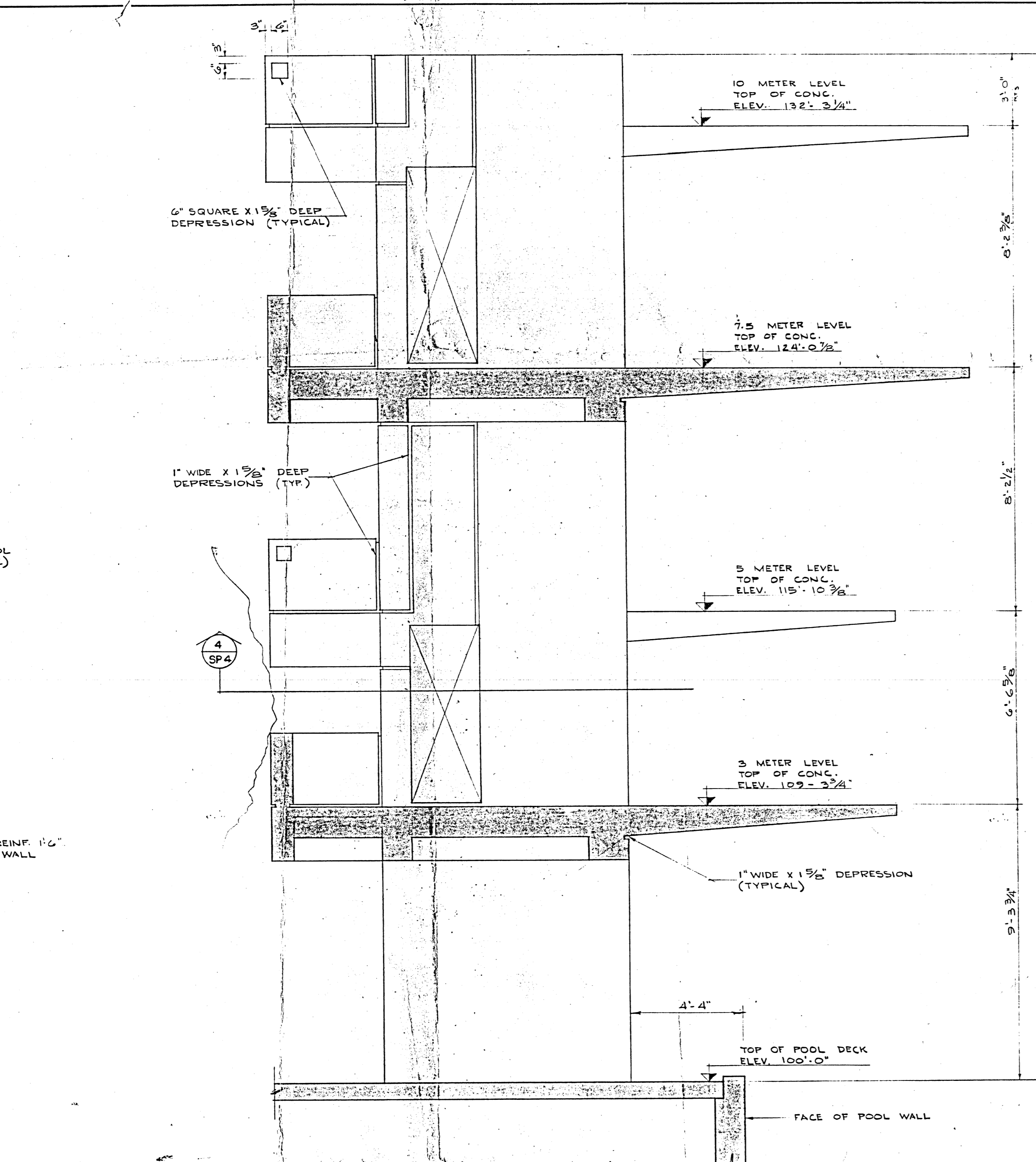
1 SP4 SCALE: 3/8" = 1'-0"



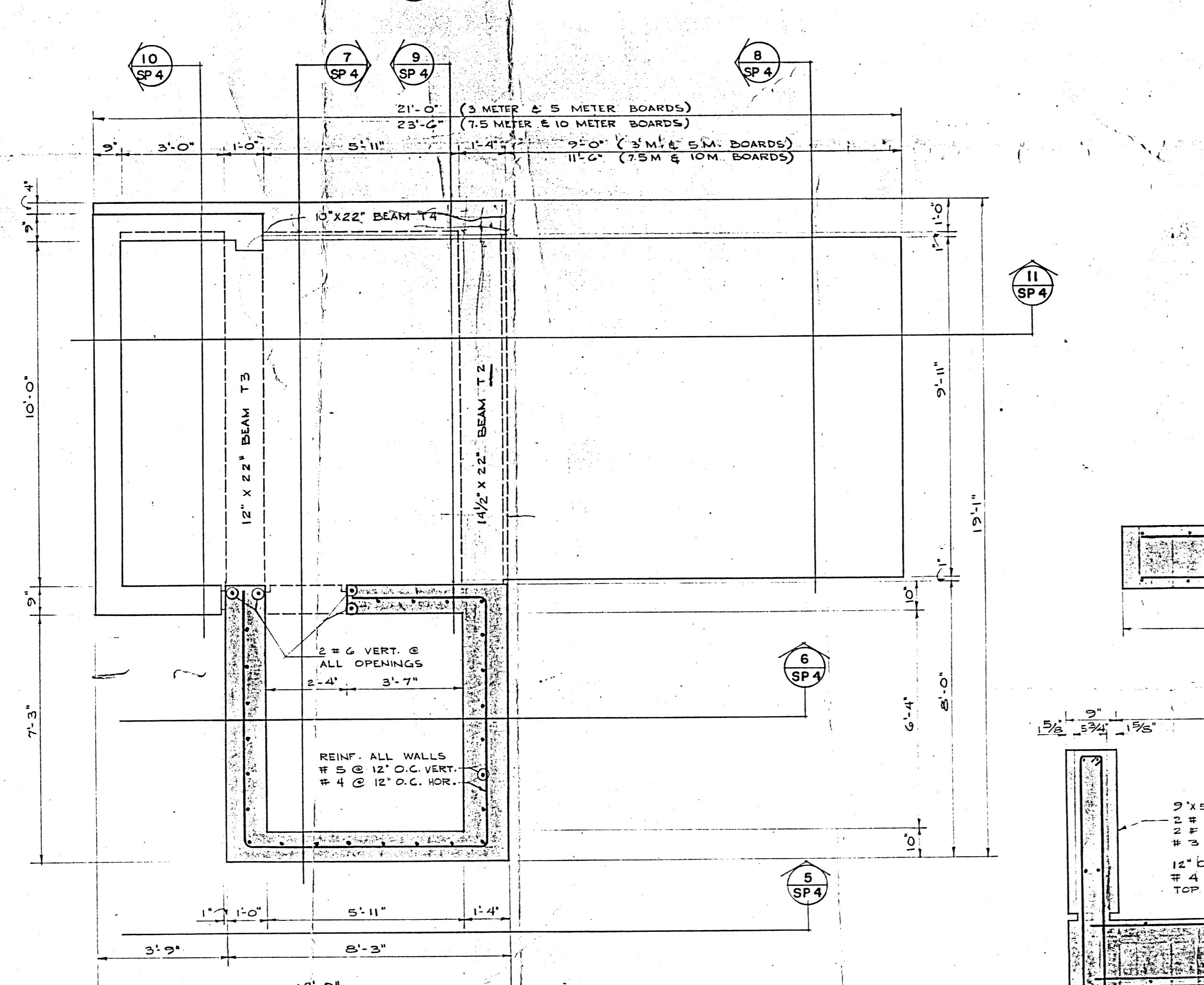
2 SP4 SCALE: 3/8" = 1'-0"



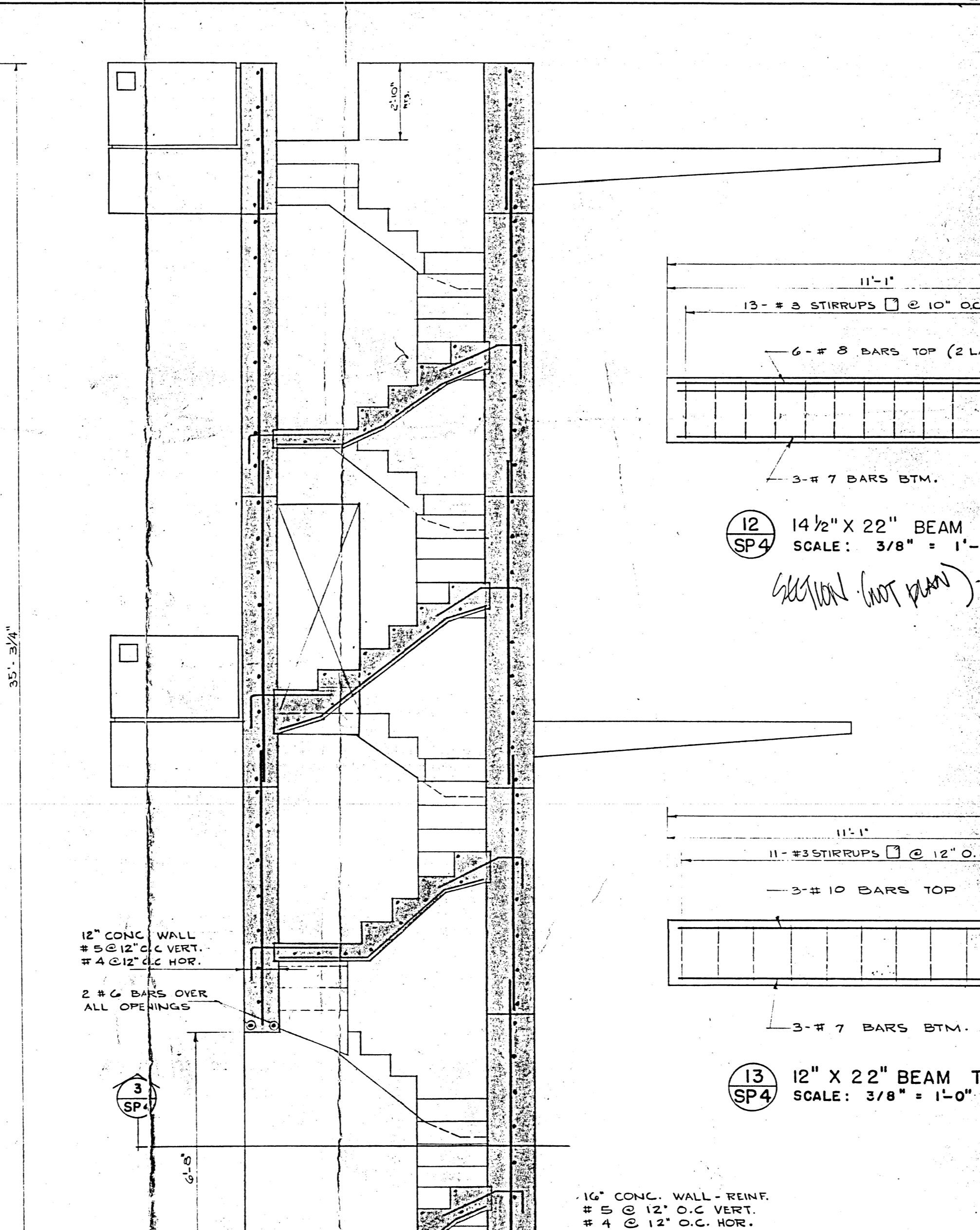
3 SP4 SCALE: 3/8" = 1'-0"



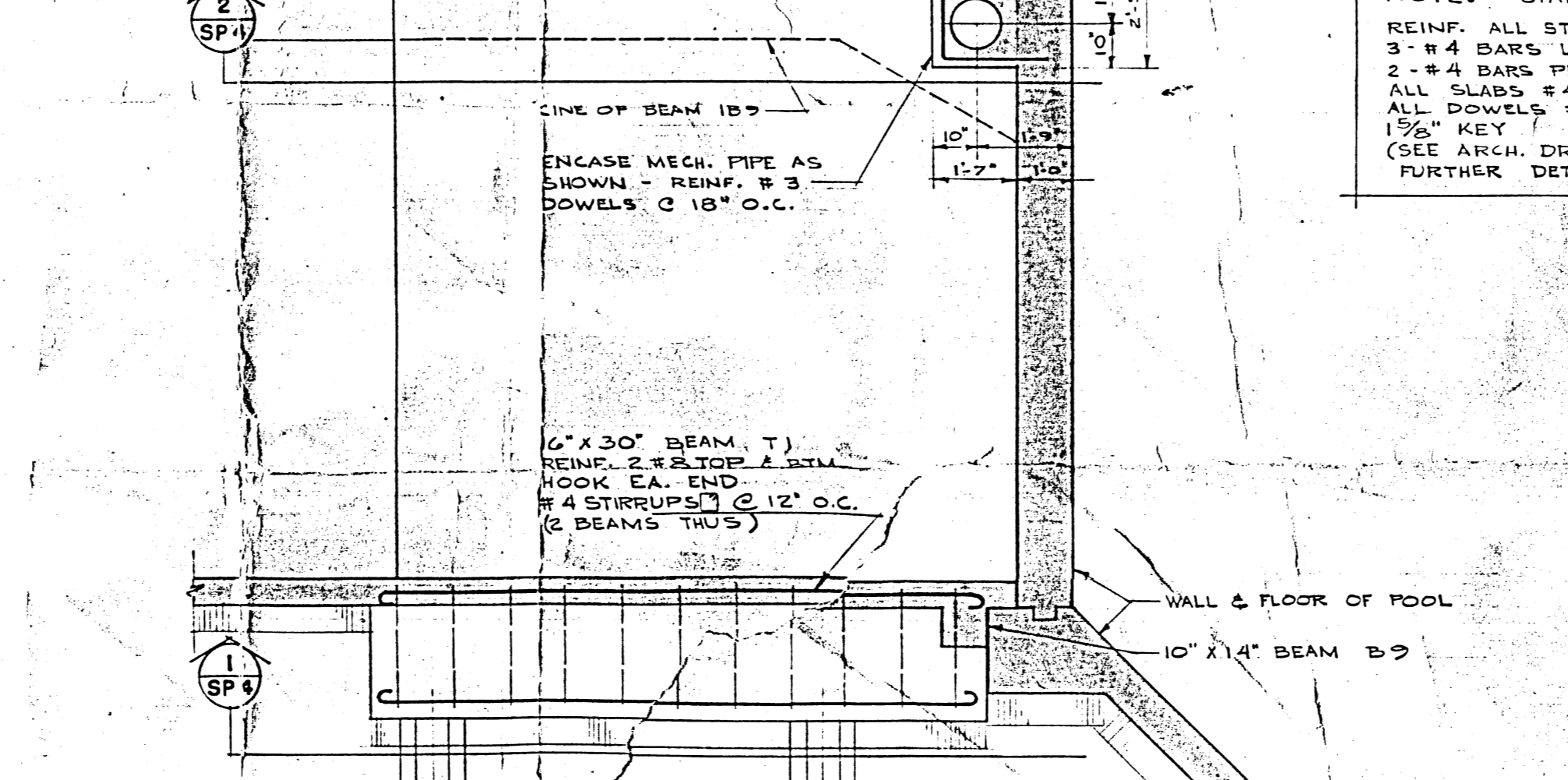
4 SP4 SCALE: 3/8" = 1'-0"



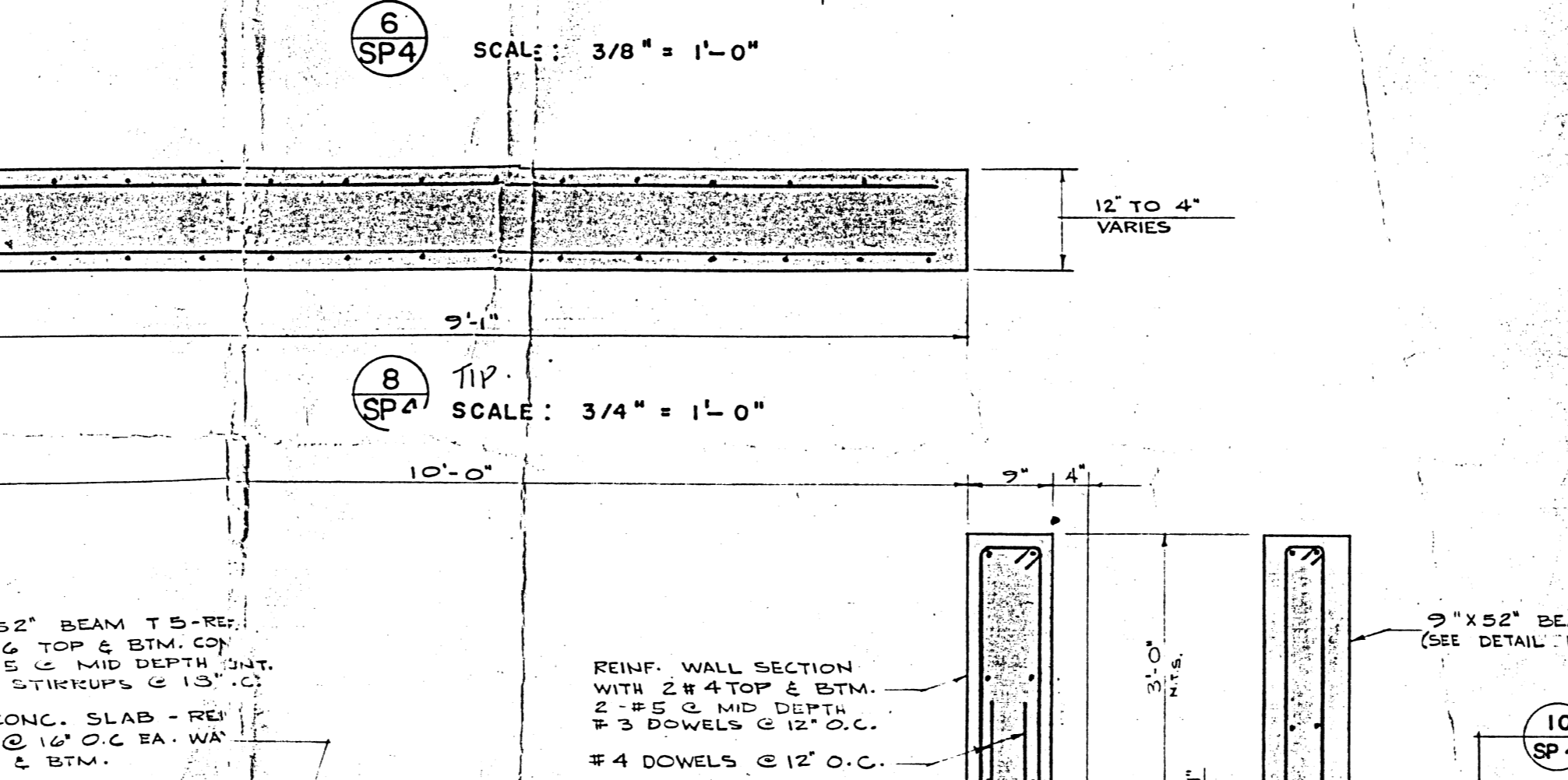
5 & 10 METER PLATFORM (3 & 7.5 M. OPP. HAND) SCALE: 3/8" = 1'-0"



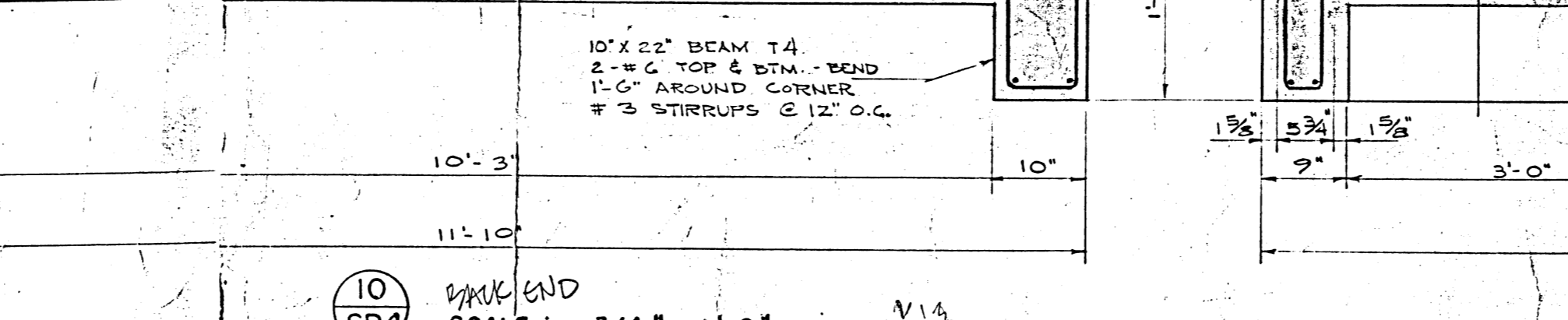
6 SP4 SCALE: 3/8" = 1'-0"



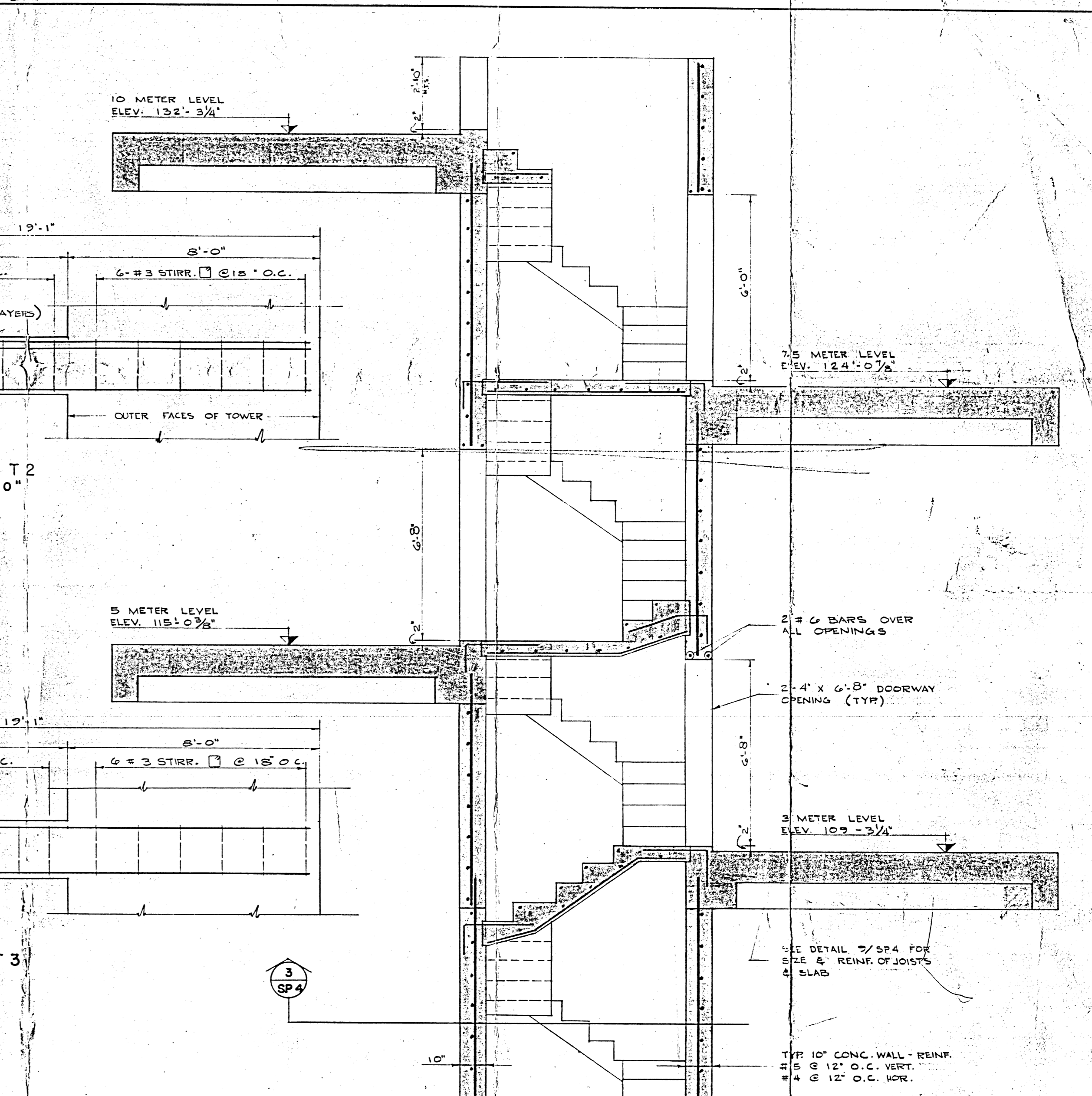
7 SP4 SCALE: 3/8" = 1'-0"



8 SP4 SCALE: 3/4" = 1'-0"

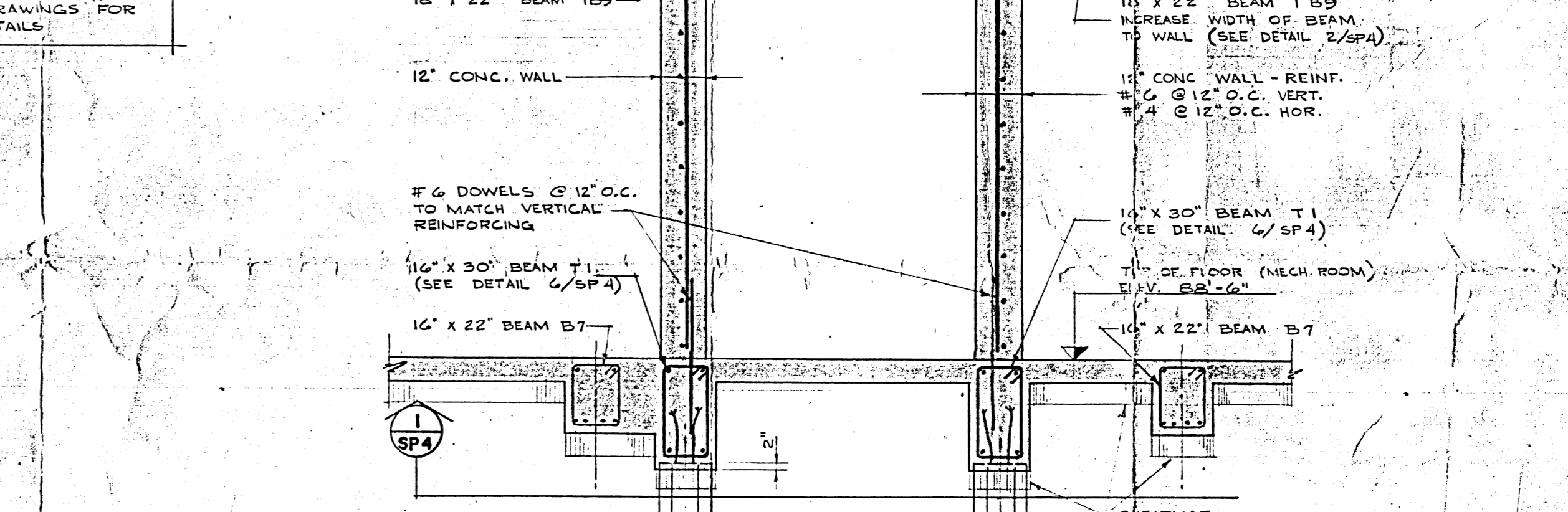


10 SP4 SCALE: 3/4" = 1'-0"

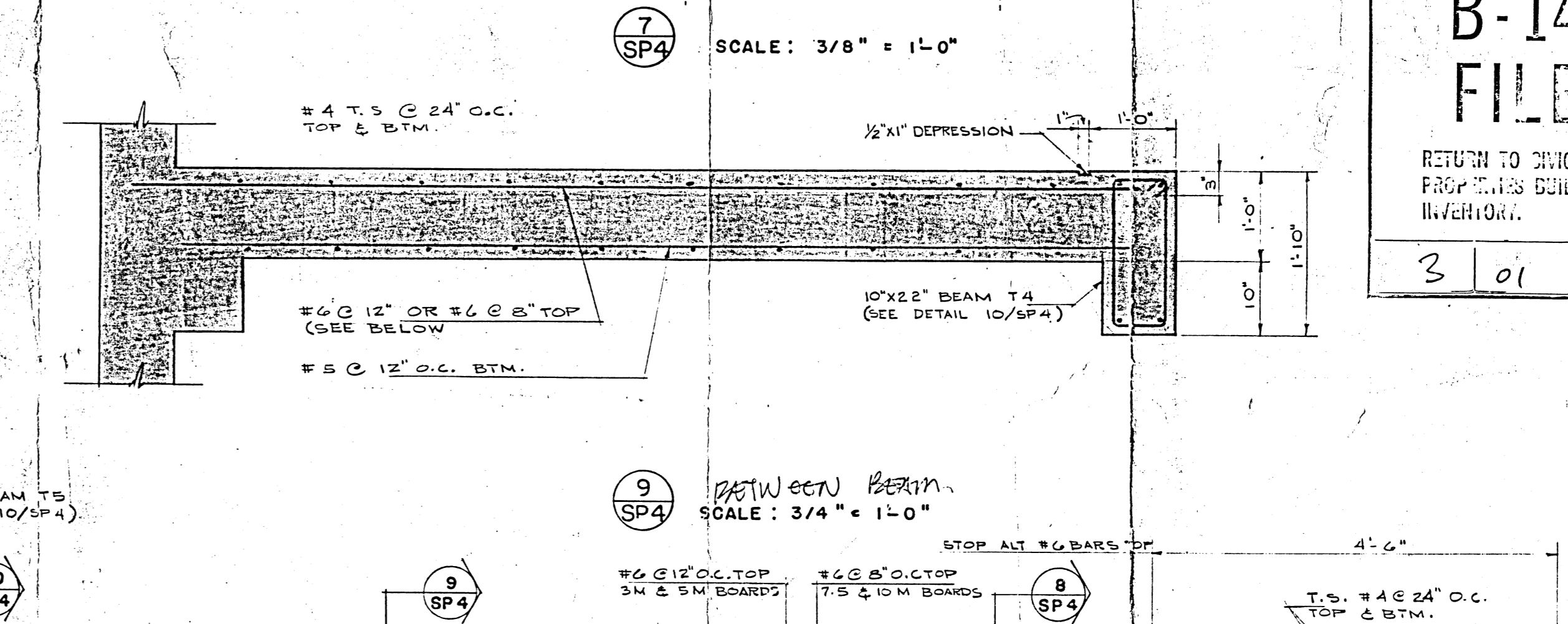


12 SP4 14 1/2' x 22' BEAM T2 SCALE: 3/8" = 1'-0"

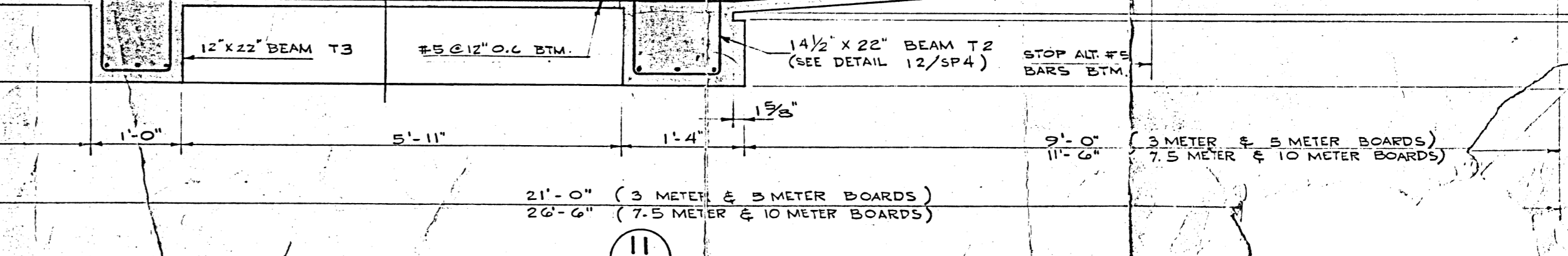
13 SP4 12' x 22' BEAM T3 SCALE: 3/8" = 1'-0"



7 SP4 SCALE: 3/8" = 1'-0"



9 SP4 between Beams SCALE: 3/4" = 1'-0"

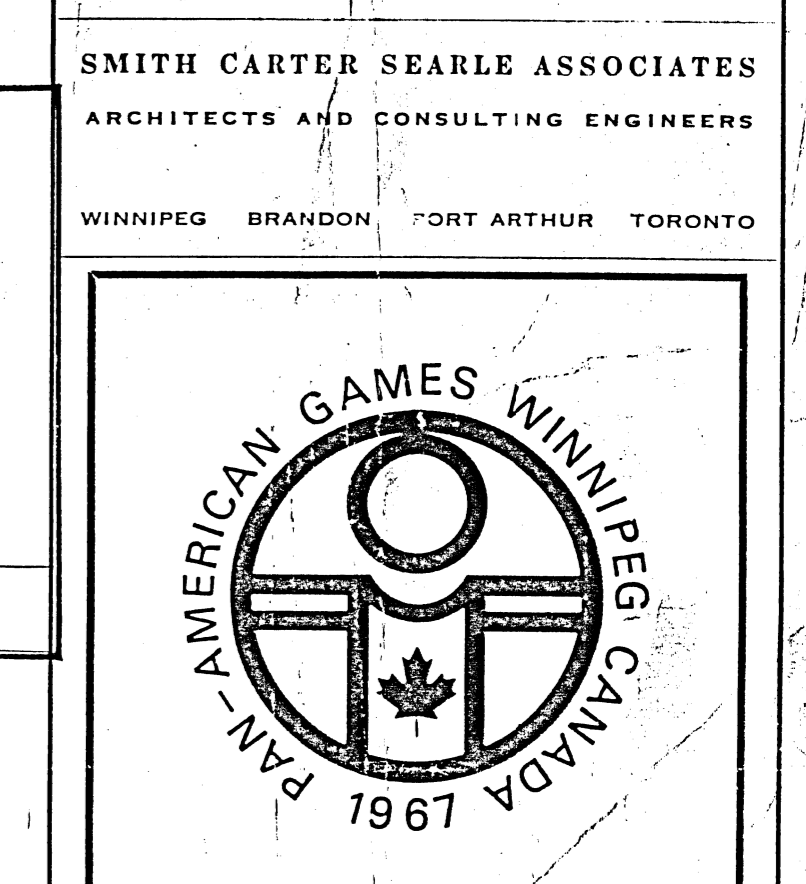


11 SP4 SCALE: 3/4" = 1'-0"

NOTE: STAIR REINF. REINF. ALL STAIRS WITH 3 #4 BARS LONG & 2 #4 BARS PER TREAD. ALL SLABS #4 @ 12" O.C. E.W. ALL DOWELS #4 @ 12" O.C. 150° KEY (SEE ARCH. DRAWINGS FOR FURTHER DETAILS)

NO.	REV.	DESCRIPTION	DATE	CHKD.
1	ISSUED WITH C.N. #3		7/9/66	

SMITH CARTER SEARLE ASSOCIATES  
ARCHITECTS AND CONSULTING ENGINEERS  
WINNIPEG BRANDON FORT ARTHUR TORONTO



PAN-AMERICAN GAMES WINNIPEG CANADA 1967  
SWIMMING FACILITY  
WINNIPEG, MANITOBA  
DIVING TOWER  
SCALE: 3/8" = 1'-0"  
65080 SP 4

25 Posidon Bay  
Diving Tower  
Pan Am Swimming Facility  
1965

65080  
SP 4