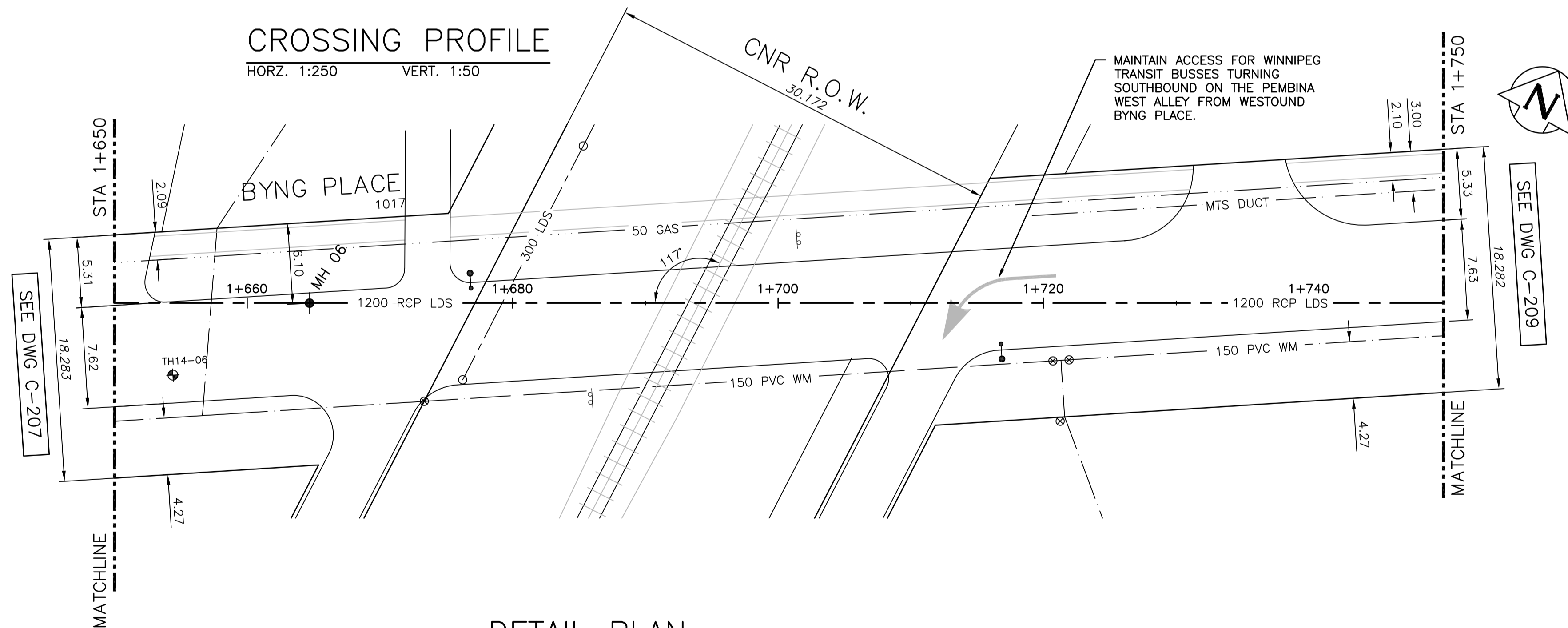


CROSSING PROFILE
HORZ. 1:250 VERT. 1:50



DETAIL PLAN
1:250

WARNING
IF POWER EQUIPMENT OR EXPLOSIVES ARE TO BE USED FOR EXCAVATION ON THIS PROJECT THE CONTRACTOR MUST:
1) NOTIFY THE GAS COMPANY OF THE PROPOSED LOCATION OF EXCAVATION.
2) TAKE PRECAUTION TO AVOID DAMAGE TO GAS COMPANY INSTALLATIONS. SEE PROVINCIAL REGULATION 210/72 FOR DETAILS.

PROPERTY LIMITS DELINEATION
DELINEATION OF PROPERTY LIMITS AS SHOWN ON THIS DWG DOES NOT REPRESENT A LEGAL SURVEY. CH2M HILL MAKES NO REPRESENTATION OR WARRANTY AS TO THE ACCURACY OF PROPERTY LIMITS DELINEATED ON THIS DRAWING, NOR ON THE DIMENSIONAL ACCURACY OF DRAWING FEATURES RELATIVE TO THOSE PROPERTY LIMITS.

- NOTES:
- WARNING MARKERS REQUIRED AT EACH SIDE OF CN RIGHT-OF-WAY.
 - INSTALLATION AND MAINTENANCE TO BE IN ACCORDANCE WITH TC E-10
 - SMALL RISK OF VERY LOW SURCHARGE PRESSURES DURING HIGH FLOW EVENTS.
 - NO EXCAVATION WITHIN CN RIGHT-OF-WAY UNLESS DIRECTED BY CONTRACT ADMINISTRATOR.
 - CN REQUIREMENT FOR MINIMUM DEPTH OF BURIAL (MEASURED TO TOP OF PIPE)
 - BELOW TRACK = 1.68m
 - BELOW CN R.O.W. = 0.9m

STORMWATER SPECIFICATIONS

I.D (NOMINAL) - 1219 mm
WALL THICKNESS - 146 mm
MATERIAL - REINFORCED CONCRETE
GRADE - C76-CLV
INSTALLATION METHOD - TRENCHLESS METHOD (CORED OR JACKED)
MAX. PRES. - ATMOSPHERIC

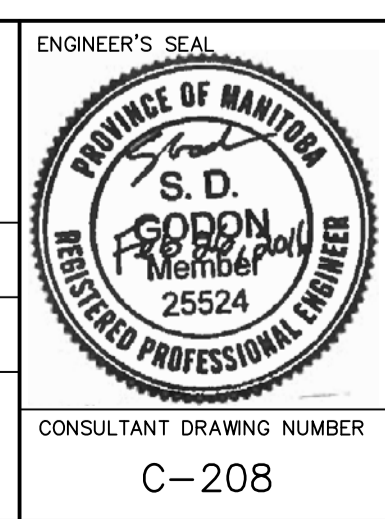
CANADIAN NATIONAL RAILWAYS	
DIVISIONAL ENGINEER	
REGIONAL ENGINEER	
MANAGER	
RAILWAY CHAINAGE	
MILEAGE	0.38
SUBDIVISION	LETELLIER

APEGM
Certificate of Authorization
CH2M HILL Canada Ltd.
No. 1441 Date: February 26, 2016

200 WM	WATERMAIN	200 WM	SL, HYDRO	150 WM	WATERMAIN	150 WM
⊕	HYDRANT	⊕	MTS	⊕	HYDRANT	⊕
⊙	VALVE	⊙	TRAFFIC SIGNALS	⊕	VALVE	⊕
525 LDS	LAND DRAINAGE SEWER	525 LDS	GAS	50 GAS	300 LDS	LAND DRAINAGE SEWER
375 WWS	WASTEWATER SEWER	375 WWS	SURVEY BAR	250 WWS	250 WWS	WASTEWATER SEWER
○	MANHOLE	●	FENCE	⊕	PROFILE	⊕
□	CATCH BASIN	■	POLE - HYDRO, MTS	⊕	GROUND ABOVE PIPE	⊕
▽	CURB INLET	▽	CURB STOP	⊕		
⊕	JUNCTIONS	⊕	GUY ANCHOR	⊕		
⊕	CULVERT	⊕	LIGHT STANDARD	⊕		
⊕	ANODE	⊕	TREE	⊕		
⊕	EXISTING	⊕	LEGEND-PLAN	⊕	PROPOSED	EXISTING

LOCATION APPROVED UNDERGROUND STRUCTURES		DATE	
SUPV. U/G STRUCTURES COMMITTEE			
NOTE: LOCATION OF UNDERGROUND STRUCTURES AS SHOWN ARE BASED ON THE BEST INFORMATION AVAILABLE BUT NO GUARANTEE IS GIVEN THAT ALL EXISTING UTILITIES ARE SHOWN OR THAT THE GIVEN LOCATIONS ARE EXACT. CONFIRMATION OF EXISTENCE AND EXACT LOCATION OF ALL SERVICES MUST BE OBTAINED FROM THE INDIVIDUAL UTILITIES BEFORE PROCEEDING WITH CONSTRUCTION.			

B.M. ELEV.	CONSTRUCTION COMPLETION DATE: YYYY MM DD
DESIGNED BY: SDG	CHECKED BY: MAF
DRAWN BY: JBC	APPROVED BY: ES
SCALE: HORIZONTAL 1:250	RELEASED FOR CONSTRUCTION
VERTICAL 1:50	DATE
ISSUED FOR TENDER: 02/2016 JBC	DATE
NO. REVISIONS	DATE BY



THE CITY OF WINNIPEG
WATER AND WASTE DEPARTMENT
ENGINEERING DIVISION

COCKBURN AND CALROSSIE COMBINED
SEWER RELIEF WORKS

BYNG PLACE
CNR CROSSING

SHEET 10 OF 25
CITY DRAWING NUMBER
LD-7808