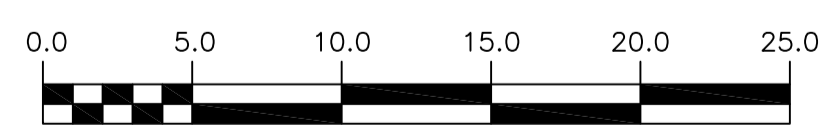
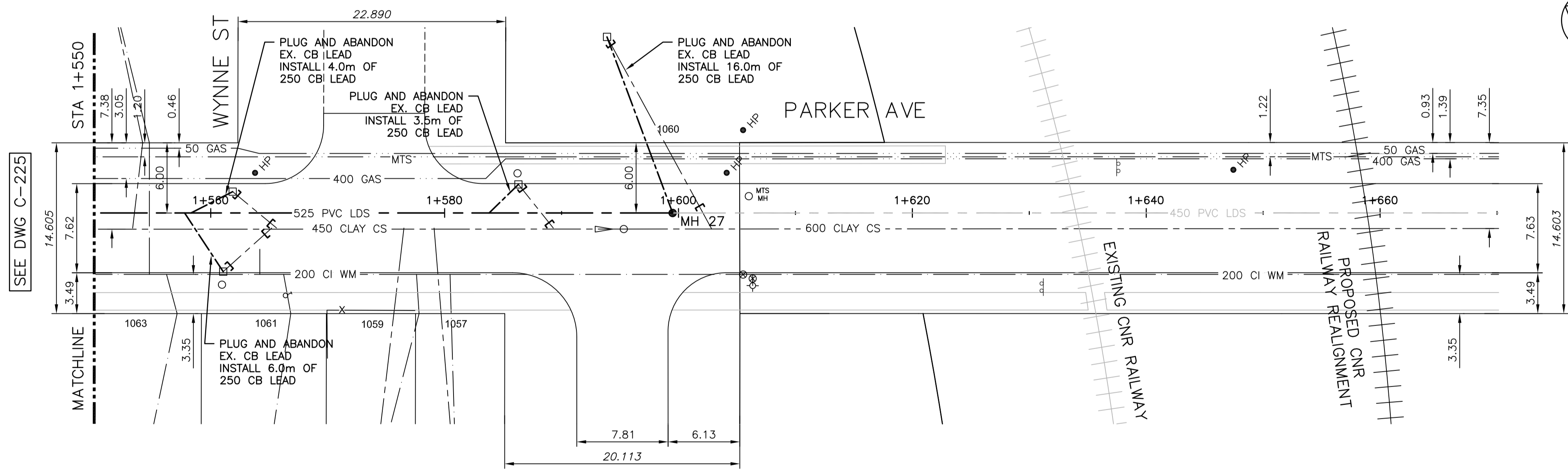


1+560 1+580 1+600 1+620 1+640 1+660

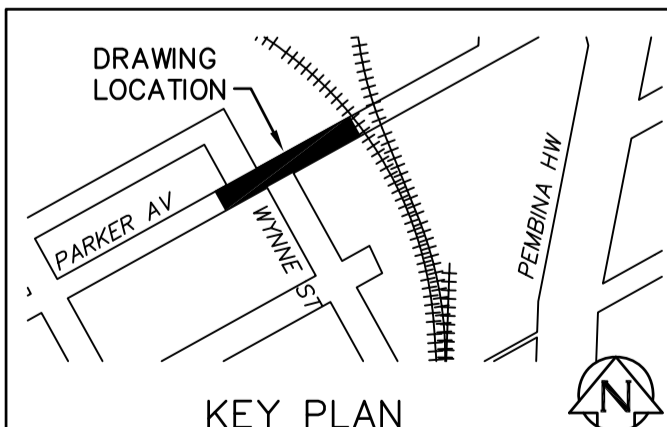
**WARNING**  
 IF POWER EQUIPMENT OR EXPLOSIVES ARE TO BE USED FOR EXCAVATION ON THIS PROJECT THE CONTRACTOR MUST:  
 1) NOTIFY THE GAS COMPANY OF THE PROPOSED LOCATION OF EXCAVATION.  
 2) TAKE PRECAUTION TO AVOID DAMAGE TO GAS COMPANY INSTALLATIONS. SEE PROVINCIAL REGULATION 210/72 FOR DETAILS.

**PROPERTY LIMITS DELINEATION**  
 DELINEATION OF PROPERTY LIMITS AS SHOWN ON THIS DWG DOES NOT REPRESENT A LEGAL SURVEY. CH2M HILL MAKES NO REPRESENTATION OR WARRANTY AS TO THE ACCURACY OF PROPERTY LIMITS DELINEATED ON THIS DRAWING, NOR ON THE DIMENSIONAL ACCURACY OF DRAWING FEATURES RELATIVE TO THOSE PROPERTY LIMITS.

**CONSTRUCTION NOTES:**  
 1. SEWER AND WATER SERVICES SHOWN ON DRAWING ARE APPROXIMATE ONLY.  
 2. LOCATION OF ALL SEWER AND WATER LINES TO BE CONFIRMED IN FIELD.  
 3. INSTALL NEW SEWER BY TRENCHLESS METHODS, UNLESS OTHERWISE NOTED.



**APEGN**  
 Certificate of Authorization  
 CH2M HILL Canada Ltd.  
 No. 1441 Date: February 26, 2016



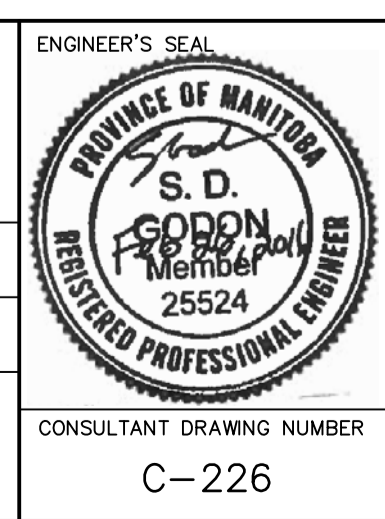
|          |                     |          |                   |             |                     |          |
|----------|---------------------|----------|-------------------|-------------|---------------------|----------|
| 200 WM   | WATERMAIN           | 200 WM   | SL, HYDRO         | 150 WM      | WATERMAIN           | 150 WM   |
| ⊕        | HYDRANT             | ⊕        | MTS               | ⊕           | HYDRANT             | ⊕        |
| ⊙        | VALVE               | ⊙        | TRAFFIC SIGNALS   | ⊙           | VALVE               | ⊙        |
| 525 LDS  | LAND DRAINAGE SEWER | 525 LDS  | 50 GAS            | 300 LDS     | LAND DRAINAGE SEWER | 300 LDS  |
| 375 WWS  | WASTEWATER SEWER    | 375 WWS  | SURVEY BAR        | 250 WWS     | WASTEWATER SEWER    | 250 WWS  |
| ○        | MANHOLE             | ○        | FENCE             | ⊕           | PROFILE             | ⊕        |
| □        | CATCH BASIN         | □        | POLE - HYDRO, MTS | ⊕           | GROUND ABOVE PIPE   | ⊕        |
| ▽        | CURB INLET          | ▽        | CURB STOP         | ⊕           |                     | ⊕        |
| +        | JUNCTIONS           | +        | GUY ANCHOR        |             |                     |          |
| ⊔        | CULVERT             | ⊔        | LIGHT STANDARD    |             |                     |          |
| ⊔        | ANODE               | ⊔        | TREE              |             |                     |          |
| EXISTING | LEGEND-PLAN         | PROPOSED | EXISTING          | LEGEND-PLAN | PROPOSED            | EXISTING |

**LOCATION APPROVED UNDERGROUND STRUCTURES**  
 SUPV. U/G STRUCTURES COMMITTEE DATE  
 NOTE:  
 LOCATION OF UNDERGROUND STRUCTURES AS SHOWN ARE BASED ON THE BEST INFORMATION AVAILABLE BUT NO GUARANTEE IS GIVEN THAT ALL EXISTING UTILITIES ARE SHOWN OR THAT THE GIVEN LOCATIONS ARE EXACT. CONFIRMATION OF EXISTENCE AND EXACT LOCATION OF ALL SERVICES MUST BE OBTAINED FROM THE INDIVIDUAL UTILITIES BEFORE PROCEEDING WITH CONSTRUCTION.

|  |             |
|--|-------------|
| B.M. ELEV.                               |             |
| CONSTRUCTION COMPLETION DATE: YYYY MM DD |             |
| DESIGNED BY                              | SDG         |
| CHECKED BY                               | MAF         |
| DRAWN BY                                 | JBC         |
| APPROVED BY                              | ES          |
| SCALE:                                   |             |
| HORIZONTAL                               | 1:250       |
| VERTICAL                                 | 1:50        |
| ISSUED FOR TENDER                        | 02/2016 JBC |
| NO.                                      | REVISIONS   |
| DATE                                     | BY          |

**ch2m**

DESIGNED BY: SDG  
 CHECKED BY: MAF  
 DRAWN BY: JBC  
 APPROVED BY: ES  
 SCALE: HORIZONTAL 1:250, VERTICAL 1:50  
 ISSUED FOR TENDER: 02/2016 JBC  
 PLOT DATE: 2016 02 26



**THE CITY OF WINNIPEG**  
 WATER AND WASTE DEPARTMENT  
 ENGINEERING DIVISION

**COCKBURN AND CALROSSIE COMBINED SEWER RELIEF WORKS**  
**PARKER AVENUE**  
 FROM STA 1+550 TO MH 027

SHEET 22 OF 25  
 CITY DRAWING NUMBER  
 LD-7820

CONSULTANT DRAWING NUMBER: C-226  
 BID OPPORTUNITY: 62-2016  
 FILE PATH: C:\pw\_workdir\ch2mhill\_wbg\jcartez1\0204776\ FILE NAME: C-226.dwg