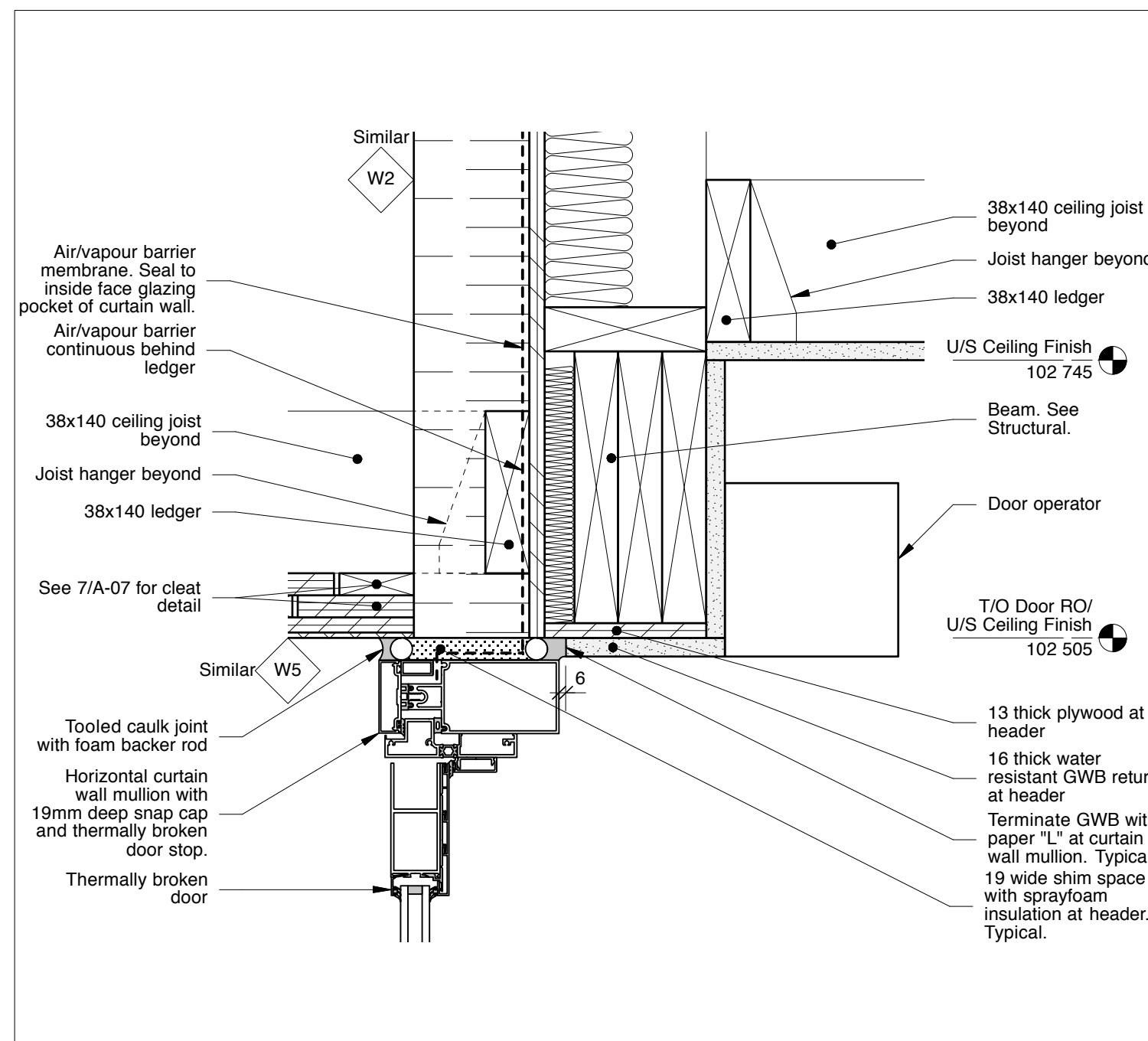
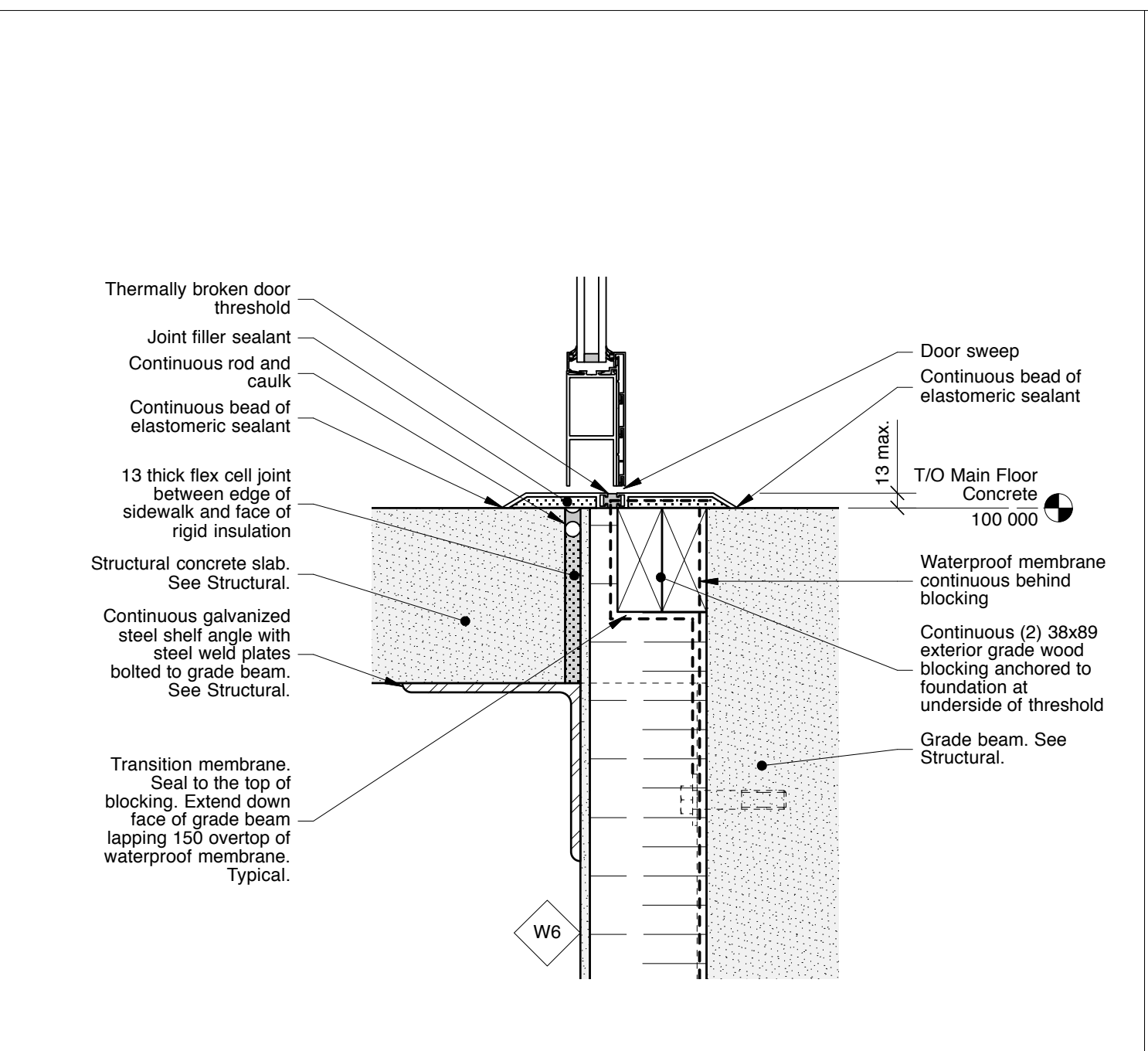


Owner
 City of Winnipeg
 Crescent Drive Park

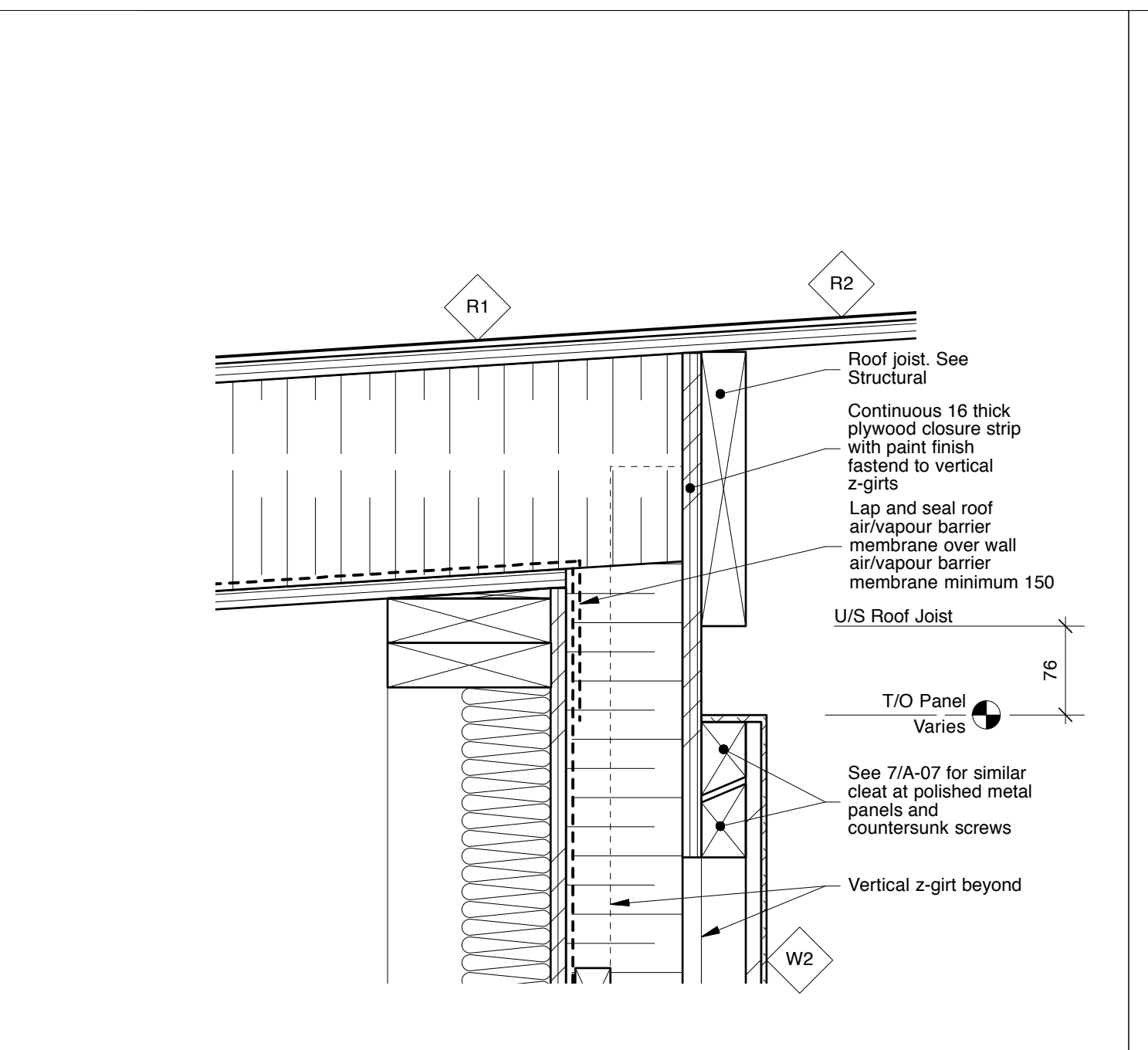
No.	Date	Revision Notes
1.	2016.02.26	Issued for Client Review
2.	2016.07.05	Issued for Construction



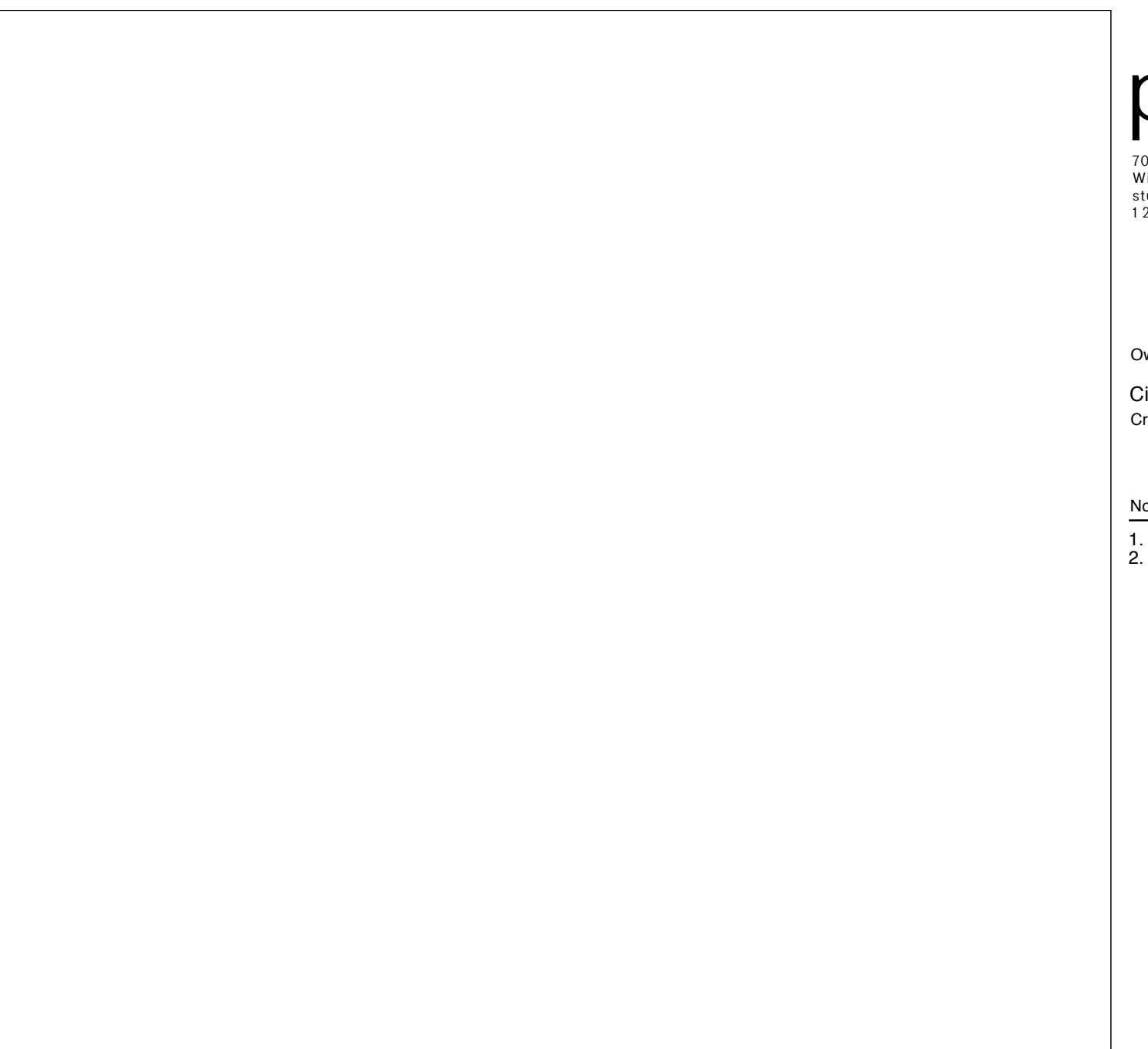
12 Section Detail - Typical Exterior Door Header
 A-09 1:5



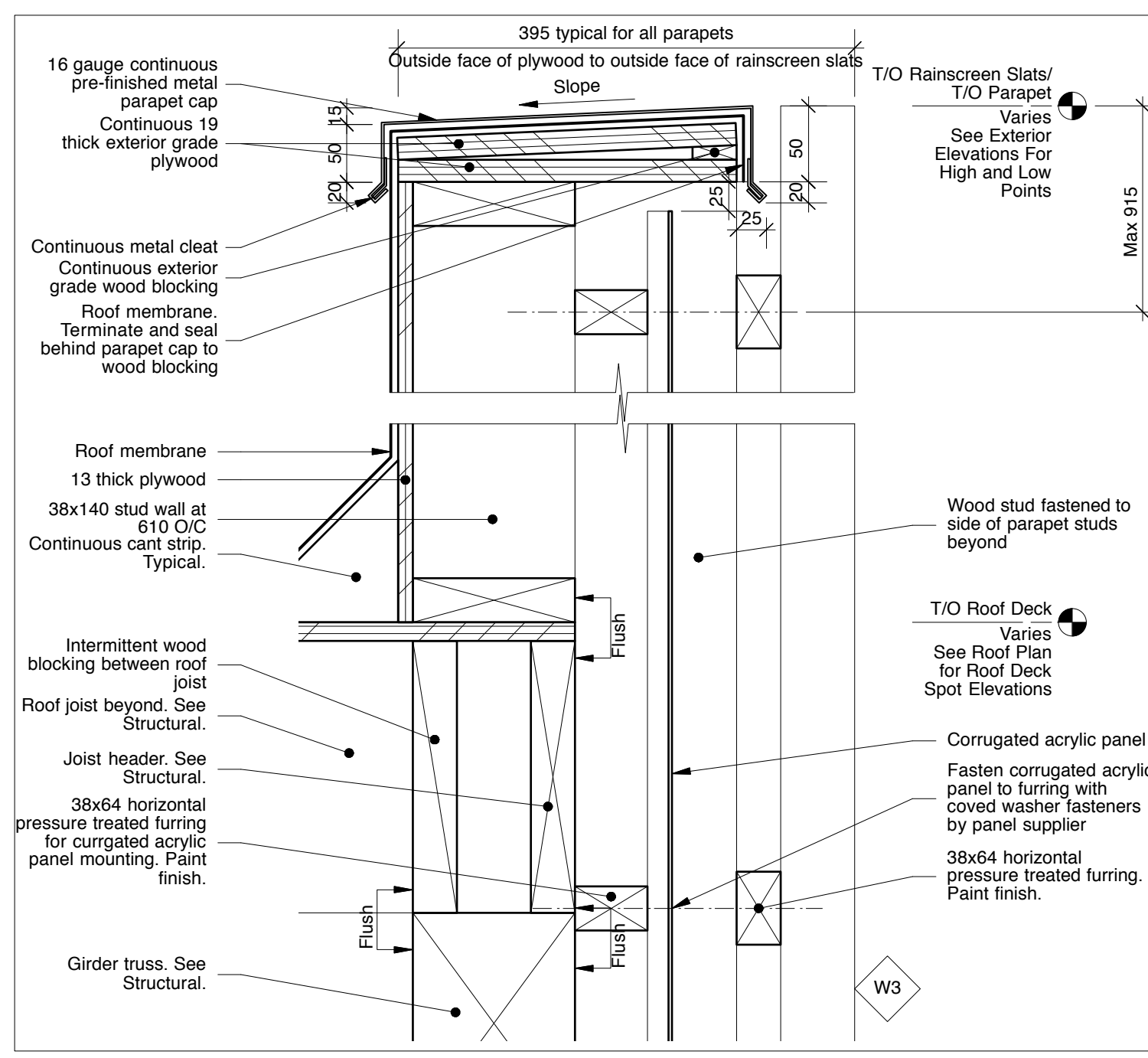
9 Section Detail - Typical Exterior Door Sill
 A-09 1:5



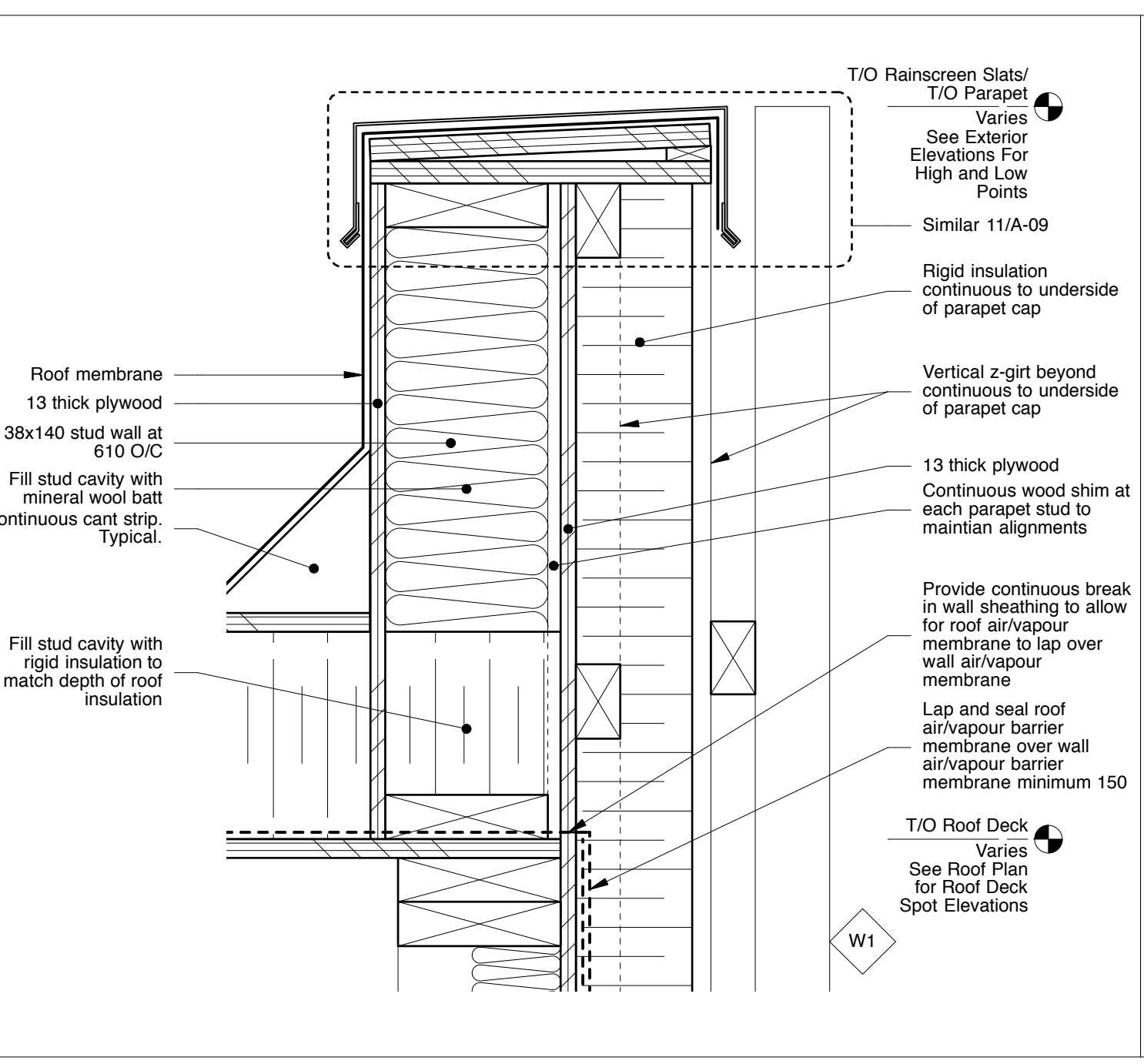
6 Section Detail - Intersection of Insulated and Non-Insulated Roofs at Polished Metal Clad Wall
 A-09 1:5



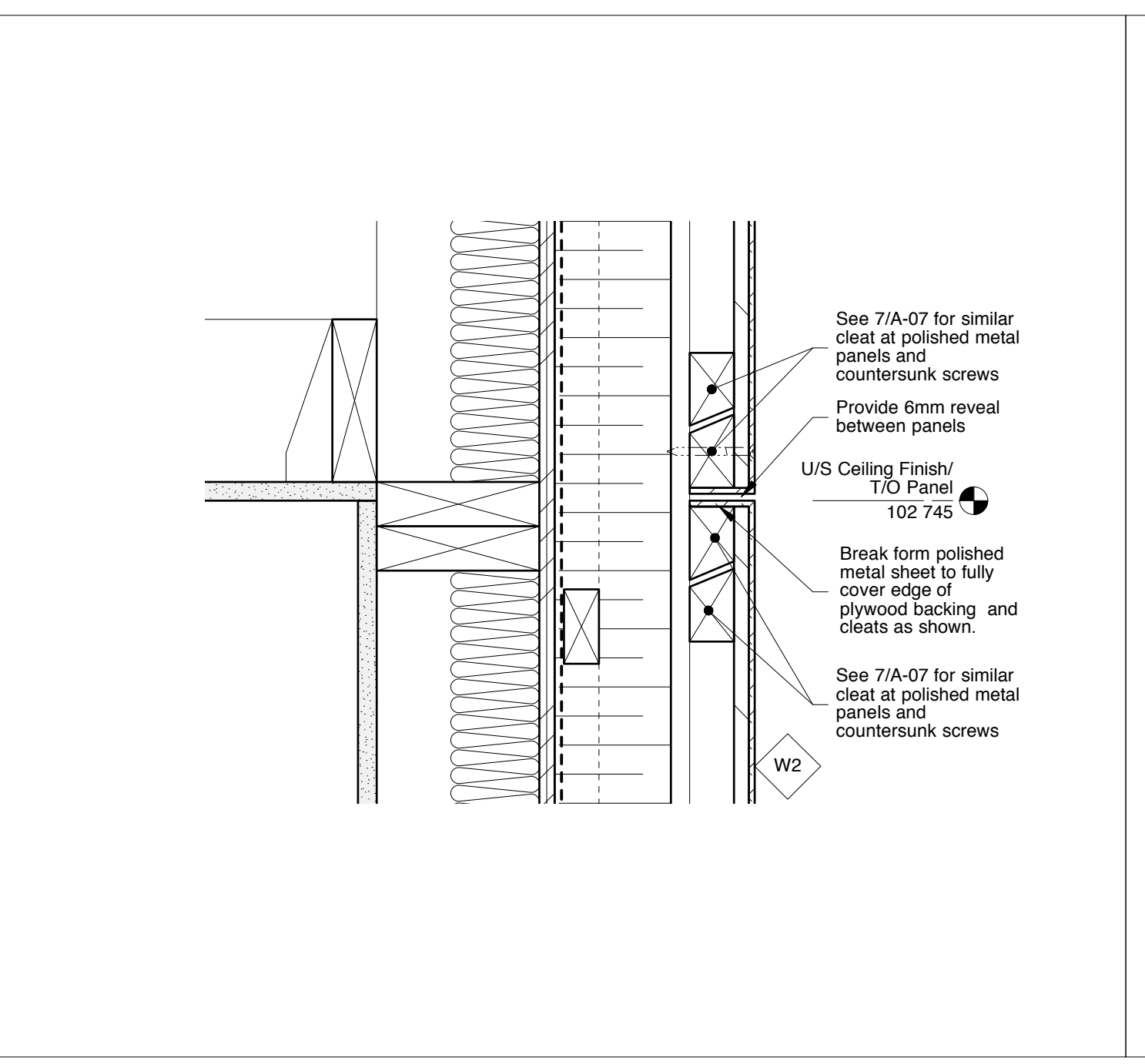
3 Plan Detail - Rainscreen Slat Profiles
 A-09 1:5



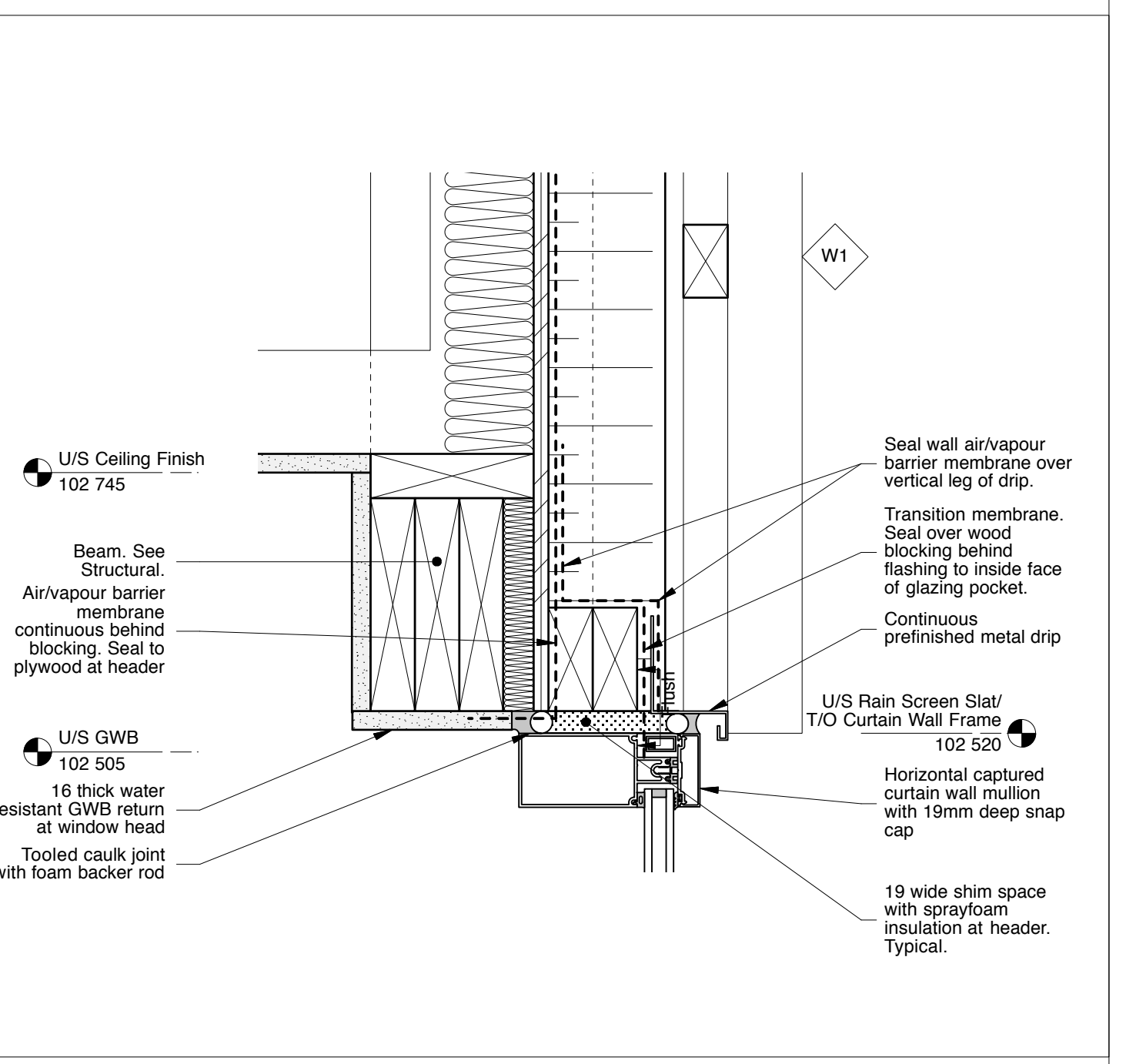
11 Section Detail - Screen Clad Parapet at Non-Insulated Roof
 A-09 1:5



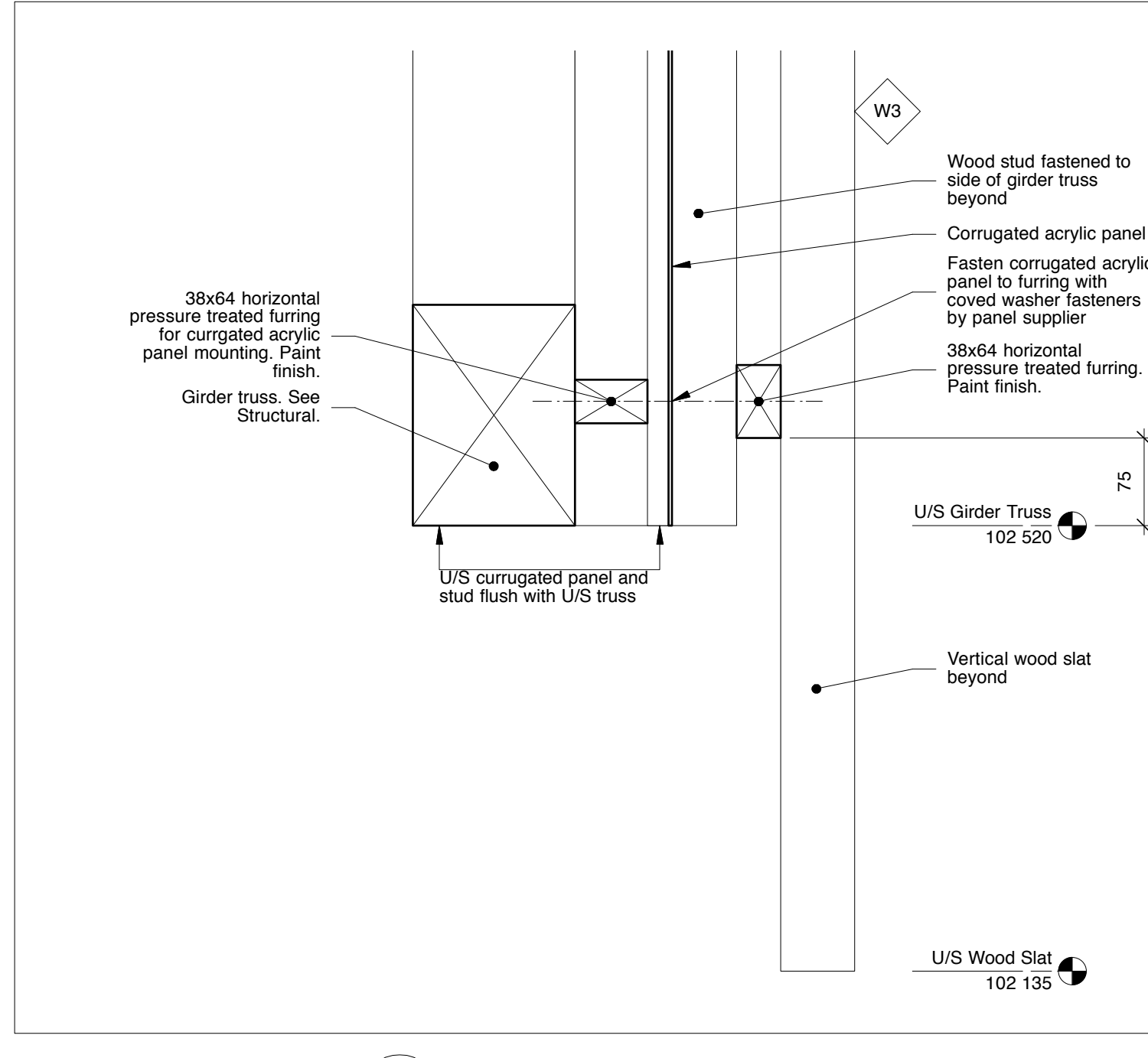
8 Section Detail - Screen Clad Parapet at Insulated Roof
 A-09 1:5



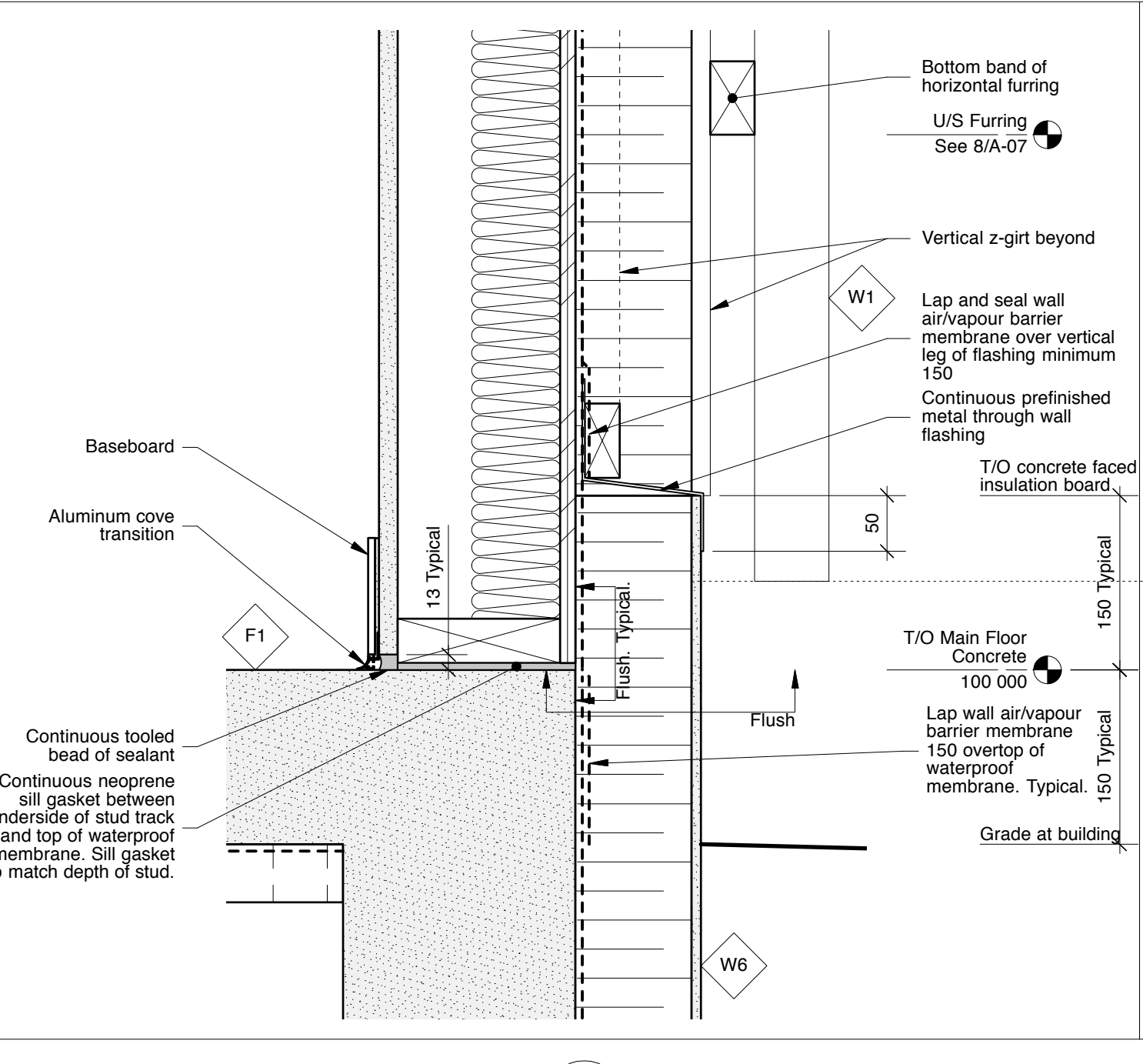
5 Section Detail - Horizontal Panel Joint in Polished Metal Cladding
 A-09 1:5



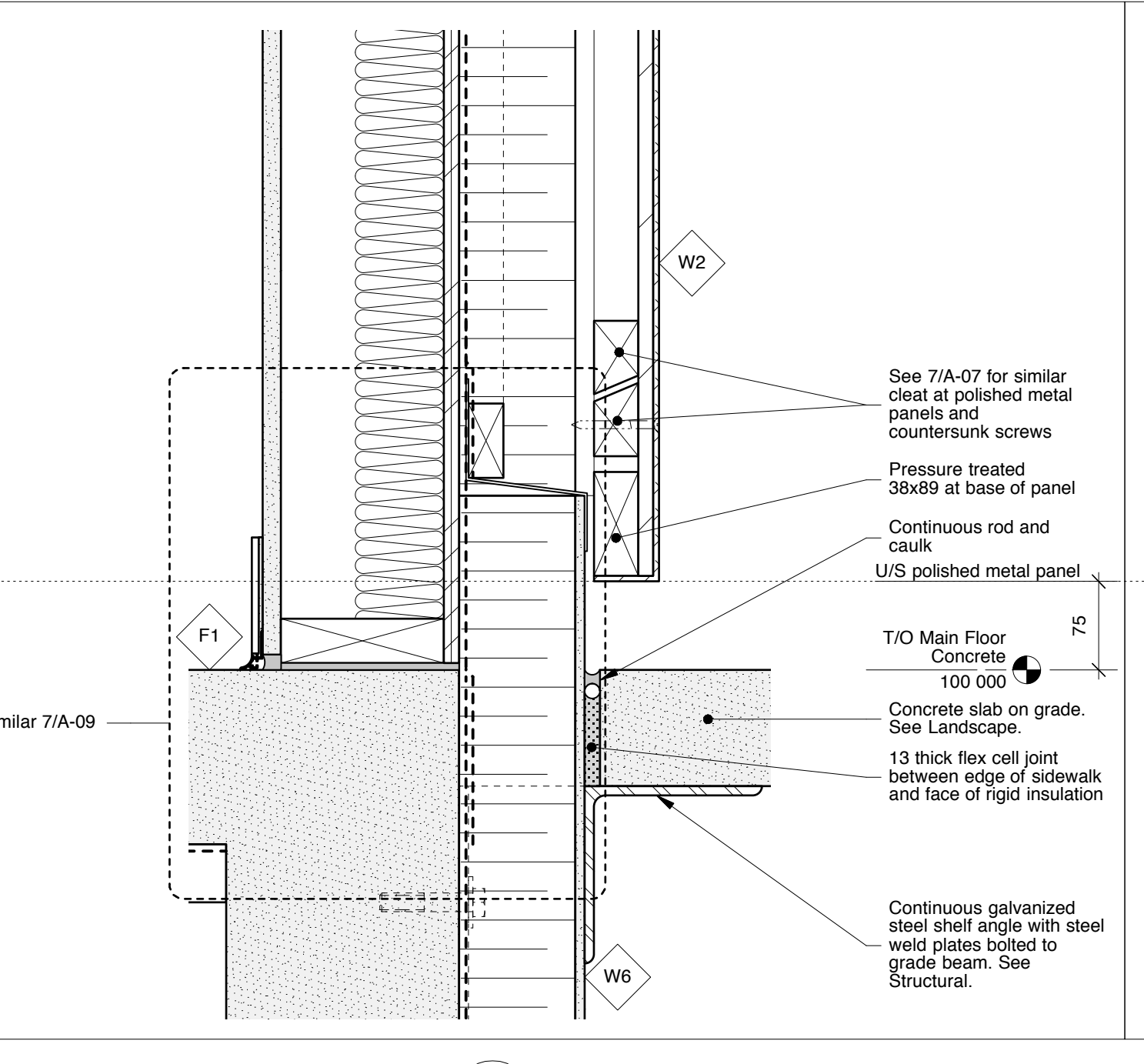
2 Section Detail - Window Header at Screen Cladding
 A-09 1:5



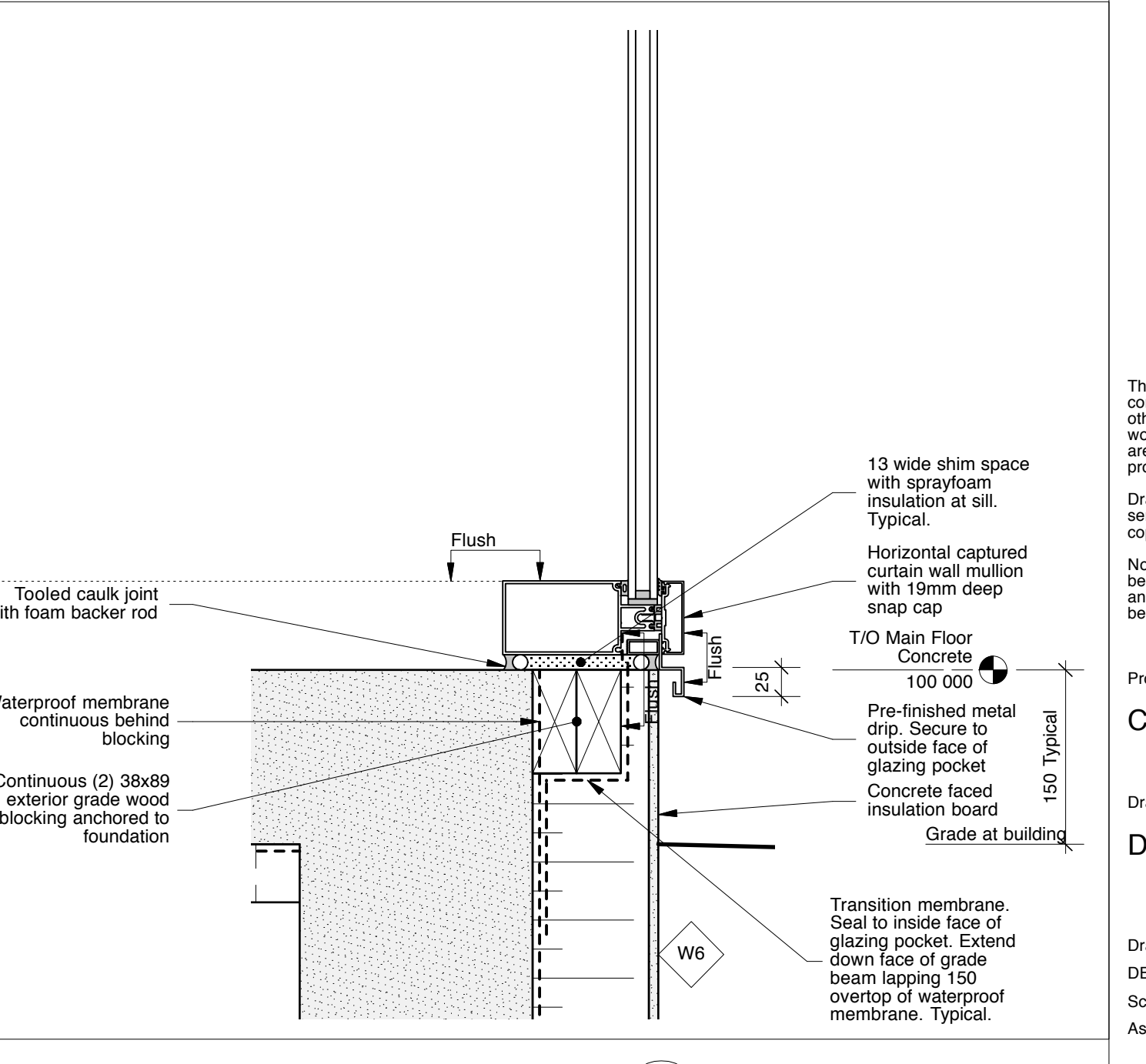
10 Section Detail - Screen Cladding
 A-09 1:5



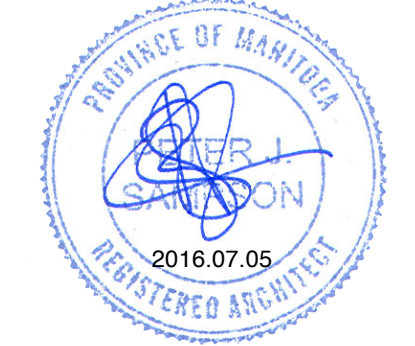
7 Section Detail - Screen Cladding Base
 A-09 1:5



4 Section Detail - Polished Metal Cladding Base
 A-09 1:5



1 Section Detail - Window Sill
 A-09 1:5



This drawing must not be scaled. The contractors shall verify all dimensions and other data on site prior to commencement of work. Discrepancies, errors, and omissions are to be reported to the Architect prior to proceeding with the Work.
 Drawings and specifications as instruments of service are the property of the Architect; the copyright in the same being reserved to him.
 No reproduction or revision to these drawings may be made without the permission of the Architect, and when made, must bear his name. All prints to be returned to the Architect upon request.

Project
Crescent Drive Park Pavilion
 Drawing
Details
 Drawn By
 DB, MP
 Scale
 As Noted
 Reviewed By
 PS
 Drawing No.
A-09
 Date
 January 2016
 Project No.
 1448
 Revision No.
 0