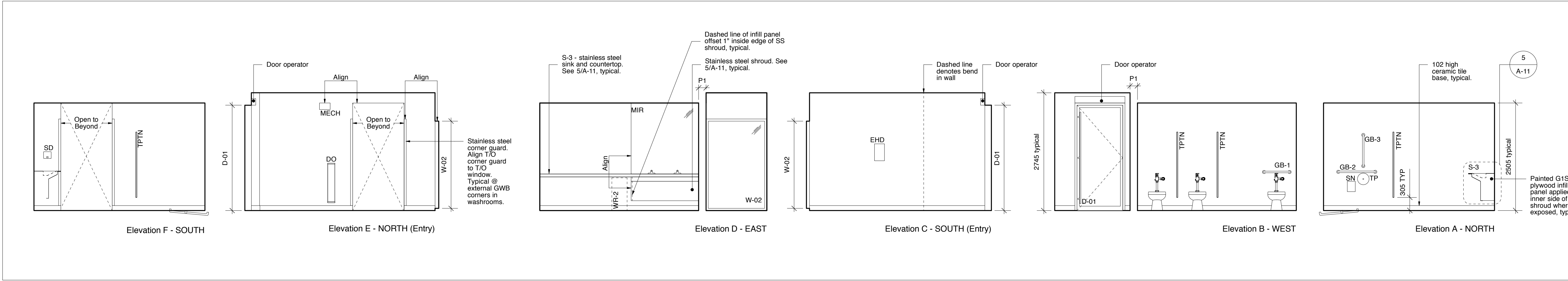
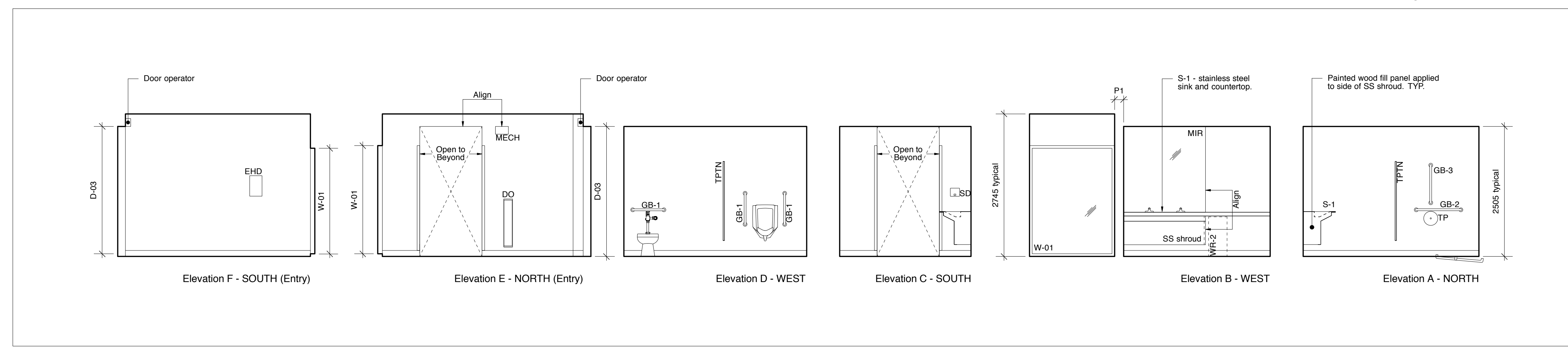


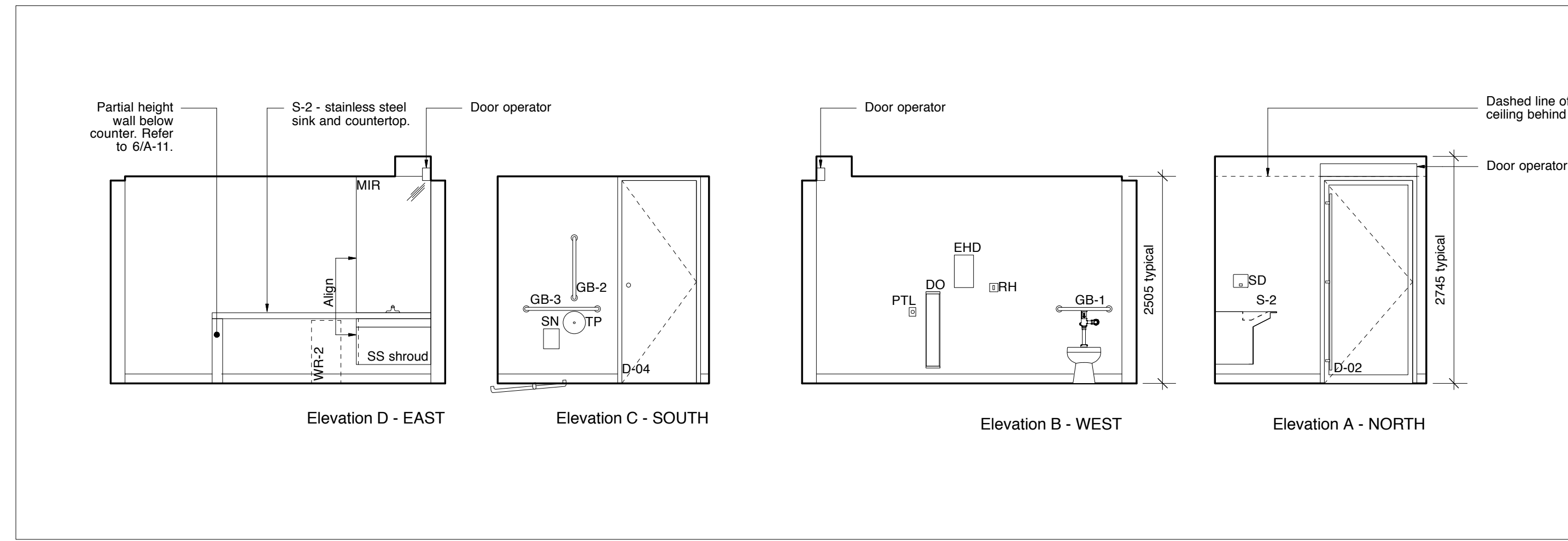
No.	Date	Revision Notes
1.	2016.02.26	Issued for Client Review
2.	2016.07.05	Issued for Construction



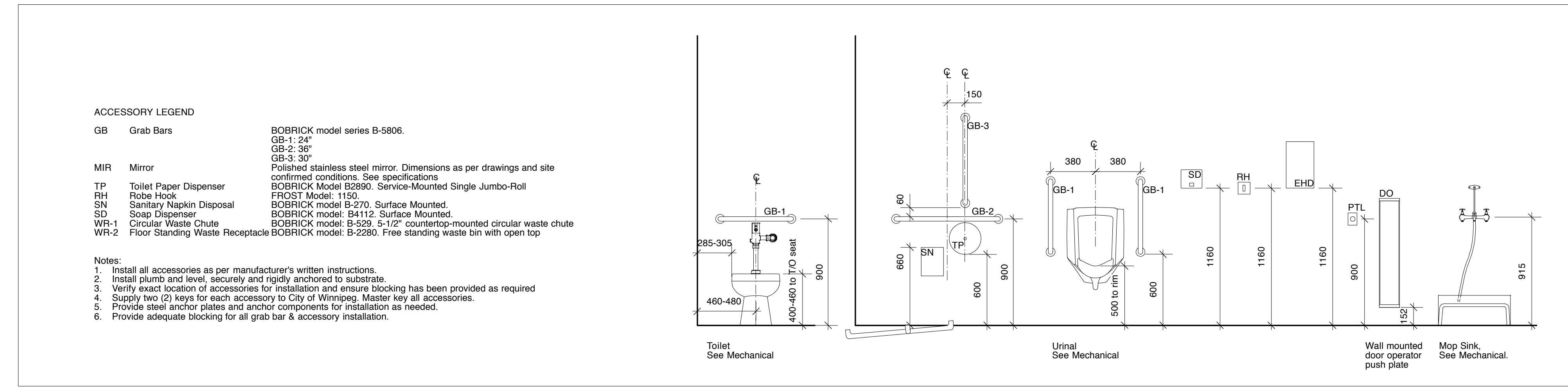
1
 A-10
 Women's Washroom
 1:50



2
 A-10
 Men's Washroom
 1:50



3
 A-10
 UTR
 1:50

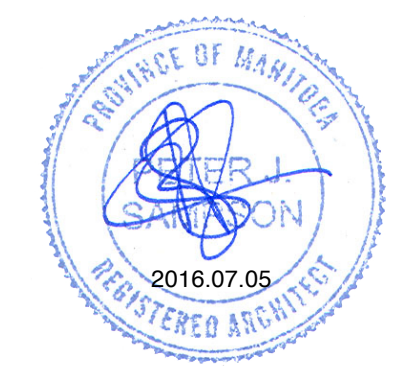


5
 A-10
 Typical Washroom Accessory Dimensions & Clearances
 1:25

ACCESSORY LEGEND

GB	Grab Bars	BOBRICK model series B-5806. GB-1: 24" GB-2: 36" GB-3: 30"
MIR	Mirror	Polished stainless steel mirror. Dimensions as per drawings and site confirmed conditions. See specifications
TP	Toilet Paper Dispenser	BOBRICK Model B2890. Service-Mounted Single Jumbo-Roll
RH	Robe Hook	FROST Model: 1150.
SN	Sanitary Napkin Disposal	BOBRICK model B-270. Surface Mounted.
SD	Soap Dispenser	BOBRICK model: B4112. Surface Mounted.
WR-1	Circular Waste Chute	BOBRICK model: B-529. 5-1/2" countertop-mounted circular waste chute
WR-2	Floor Standing Waste Receptacle	BOBRICK model: B-2280. Free standing waste bin with open top

- Notes:**
1. Install all accessories as per manufacturer's written instructions.
 2. Install plumb and level, securely and rigidly anchored to substrate.
 3. Verify exact location of accessories for installation and ensure blocking has been provided as required.
 4. Supply two (2) keys for each accessory to City of Winnipeg. Master key all accessories.
 5. Provide steel anchor plates and anchor components for installation as needed.
 6. Provide adequate blocking for all grab bar & accessory installation.



This drawing must not be scaled. The contractors shall verify all dimensions and other data on site prior to commencement of work. Discrepancies, errors, and omissions are to be reported to the Architect prior to proceeding with the Work.

Drawings and specifications as instruments of service are the property of the Architect; the copyright in the same being reserved to him.

No reproduction or revision to these drawings may be made without the permission of the Architect, and when made, must bear his name. All prints to be returned to the Architect upon request.

Project
 Crescent Drive Park Pavilion

Drawing
 Interior Elevations

Drawn By
 MJK
 Scale
 As Noted

Reviewed By
 PS
 Drawing No.
 A-10

Date
 January 2016

Project No.
 1448

Revision No.
 0