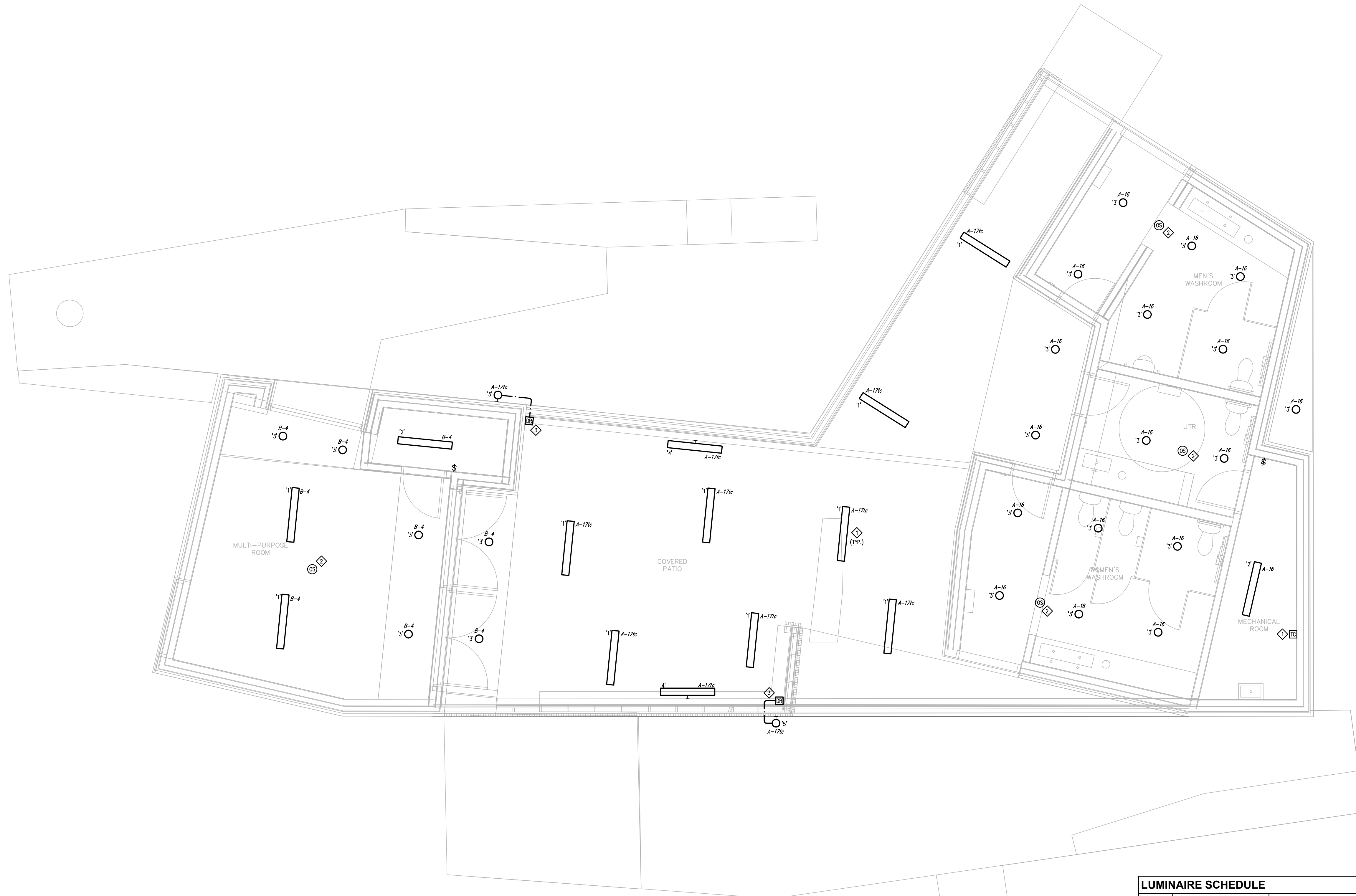


No.	Date	Revision Notes
0	2016/02/29	Issued for Construction
1	2016/09/08	Re-issued for Construction



**GENERAL NOTES:**

- LUMINAIRES SHALL BE SURFACE MOUNTED AT 11'-0" AFF. COORDINATE EXACT LOCATION OF LUMINAIRES WITH ARCHITECTURAL AND JOIST LAYOUT.

**NOTES**

- PROVIDE PROGRAMMABLE TIME CLOCK TO CONTROL COVERED PATIO LUMINAIRES. COORDINATE TIME OF OPERATION WITH THE CITY.
- OCCUPANCY SENSOR SHALL USE ULTRASONIC TECHNOLOGY AND INCLUDE INTEGRAL DAYLIGHT CONTROL.
- TYPE '5' LUMINAIRE DRIVER SHALL BE MOUNTED AT TOP OF TRUSS.

1 MAIN FLOOR - LIGHTING LAYOUT  
EL2.0 SCALE: 1:50

**LUMINAIRE SCHEDULE**

TYPE	MANUFACTURER	CATALOGUE NO.	VOLTS	LAMP	TOTAL WATTS FOR LUM	TYPE OF DRIVER	REMARKS
1	LUMENPULSE	LOG RD-120-48-30K 12XPE2-30x60-SI-NO	120	CREE XPE2 61W LED	60.4	INTEGRAL	LUMENFACADE SURFACE MOUNTED, 3000K CCT
2	LITHONIA	ZL1N L48 5000LM FST 30K 80CRI	120	LED	37.8	INTEGRAL	48" SURFACE MOUNTED LED STRIP LUMINAIRE, 3000K CCT.
3	LITHONIA	4B3MW LED 30K	120	LED	10.8	INTEGRAL	4" MATTE WHITE BAFFLE LED MODULE, 3000K CCT, 80CRI.
4	HYDREL	RHY4 SBR WHT30K MVOLT WWD KM BLA	120	LED	57	INTEGRAL	4" SURFACE MOUNTED WIDE WALL WASH FLOODLIGHT CW KNUCKLE MOUNTING OPTION.
5	GREEN IMAGE	GS60NFX3D-24V-WW	120V	LED TAPE - 5m LENGTH	48	GREEN IMAGE M200L24DC	5m LED TAPE LIGHT MOUNTED TO SIDE OF STRUCTURE. COORDINATE REQUIRED LENGTH WITH BUILDING HEIGHT AND ARCHITECTURAL.

This drawing must not be scaled. The contractors shall verify all dimensions and other data on site prior to commencement of work. Discrepancies, errors, and omissions are to be reported to the Architect prior to proceeding with the Work.  
Drawings and specifications as instruments of service are the property of the Architect; the copyright in the same being reserved to him.  
No reproduction or revision to these drawings may be made without the permission of the Architect, and when made, must bear his name. All prints to be returned to the Architect upon request.