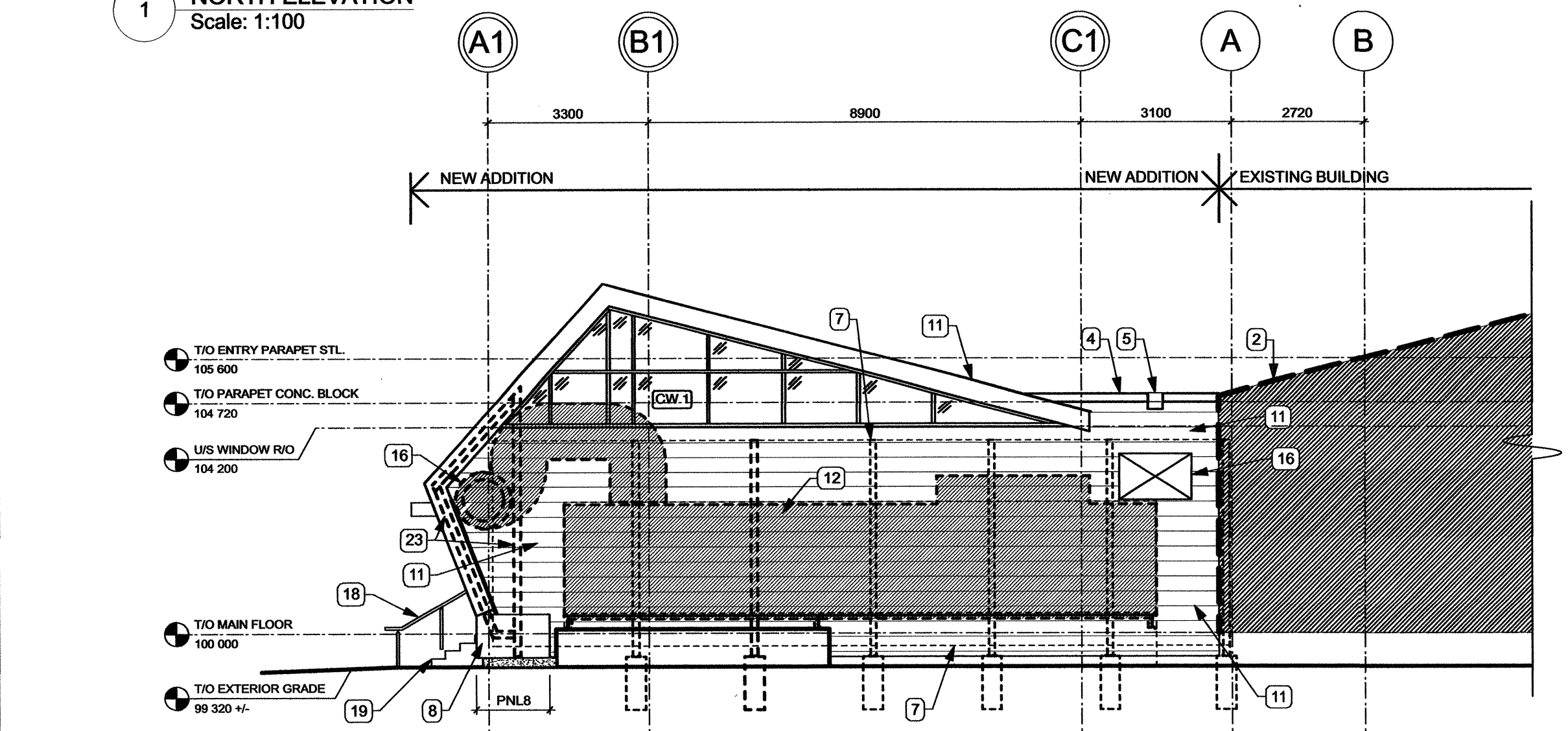
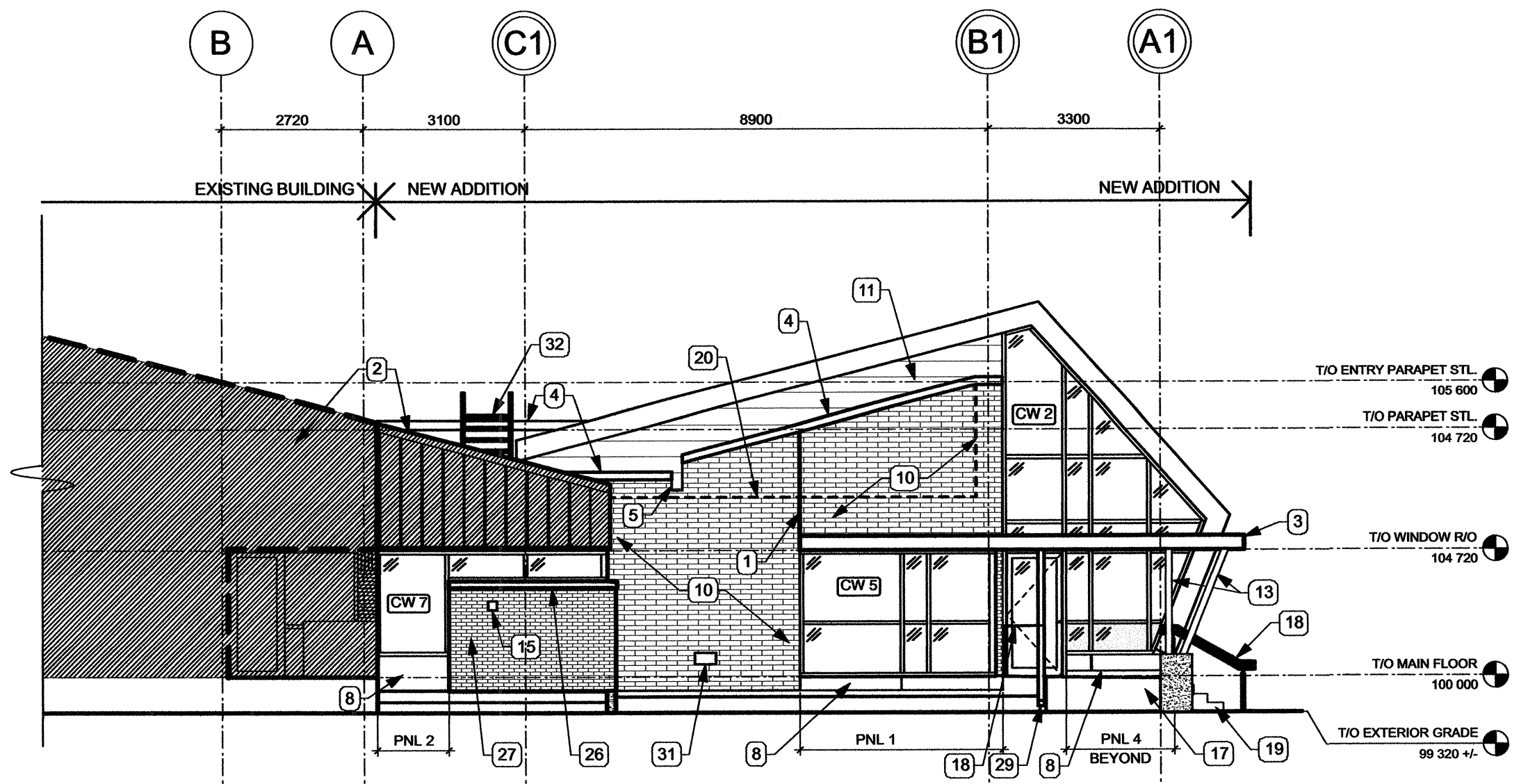


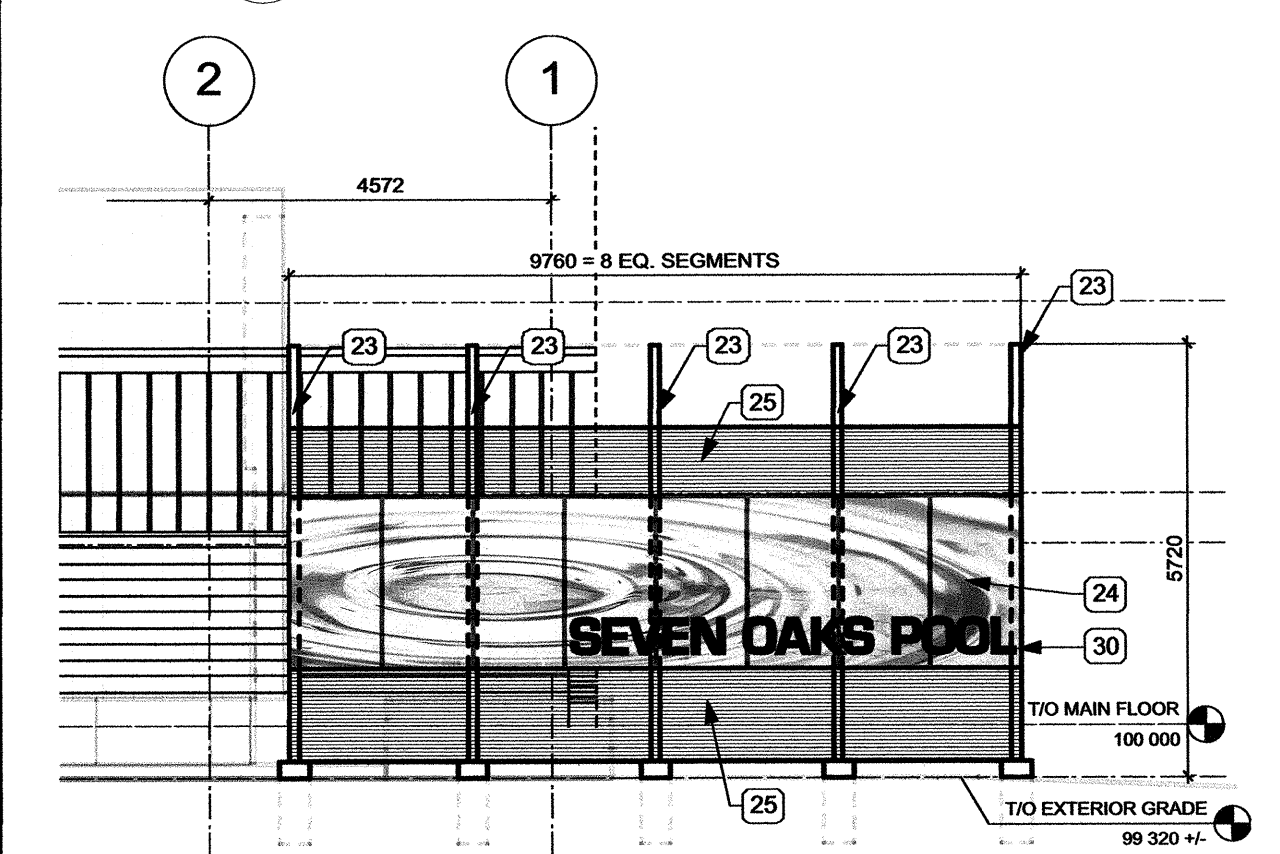
1 NORTH ELEVATION
Scale: 1:100



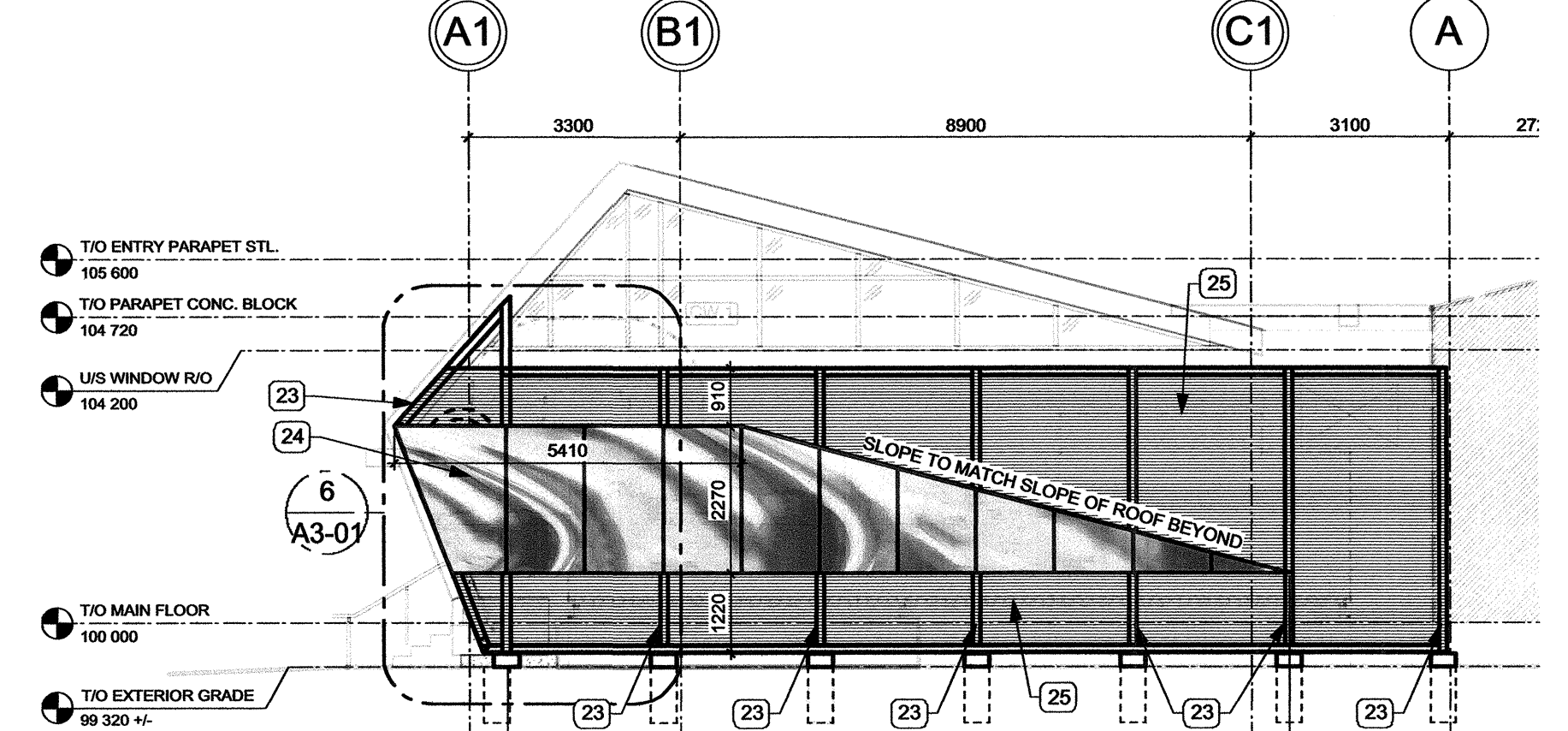
2 WEST ELEVATION
Scale: 1:100



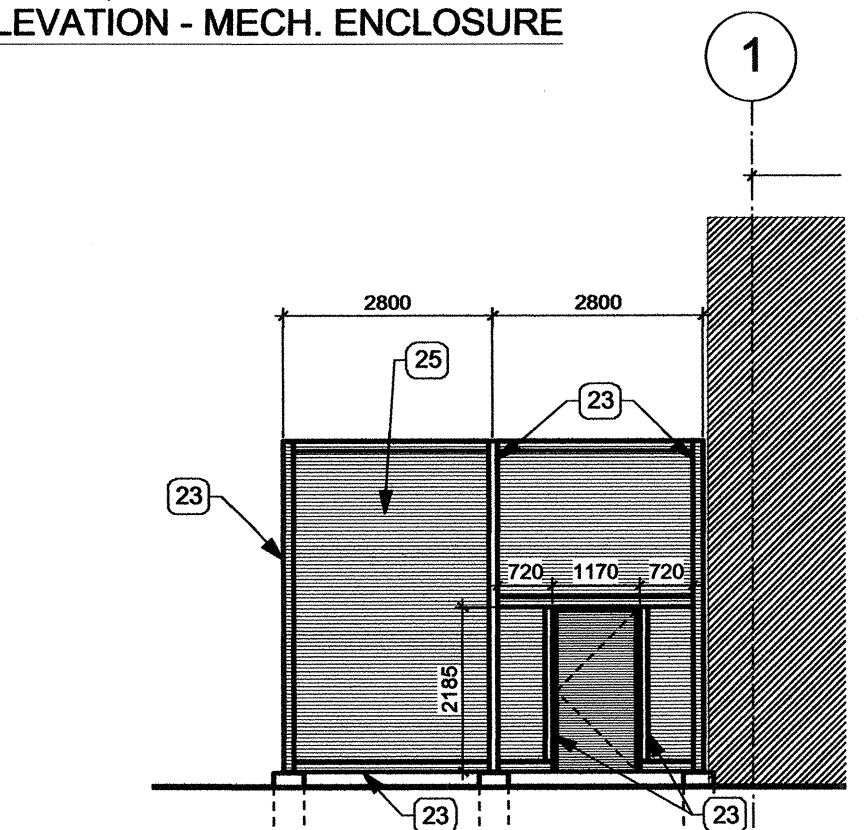
3 EAST ELEVATION
Scale: 1:100



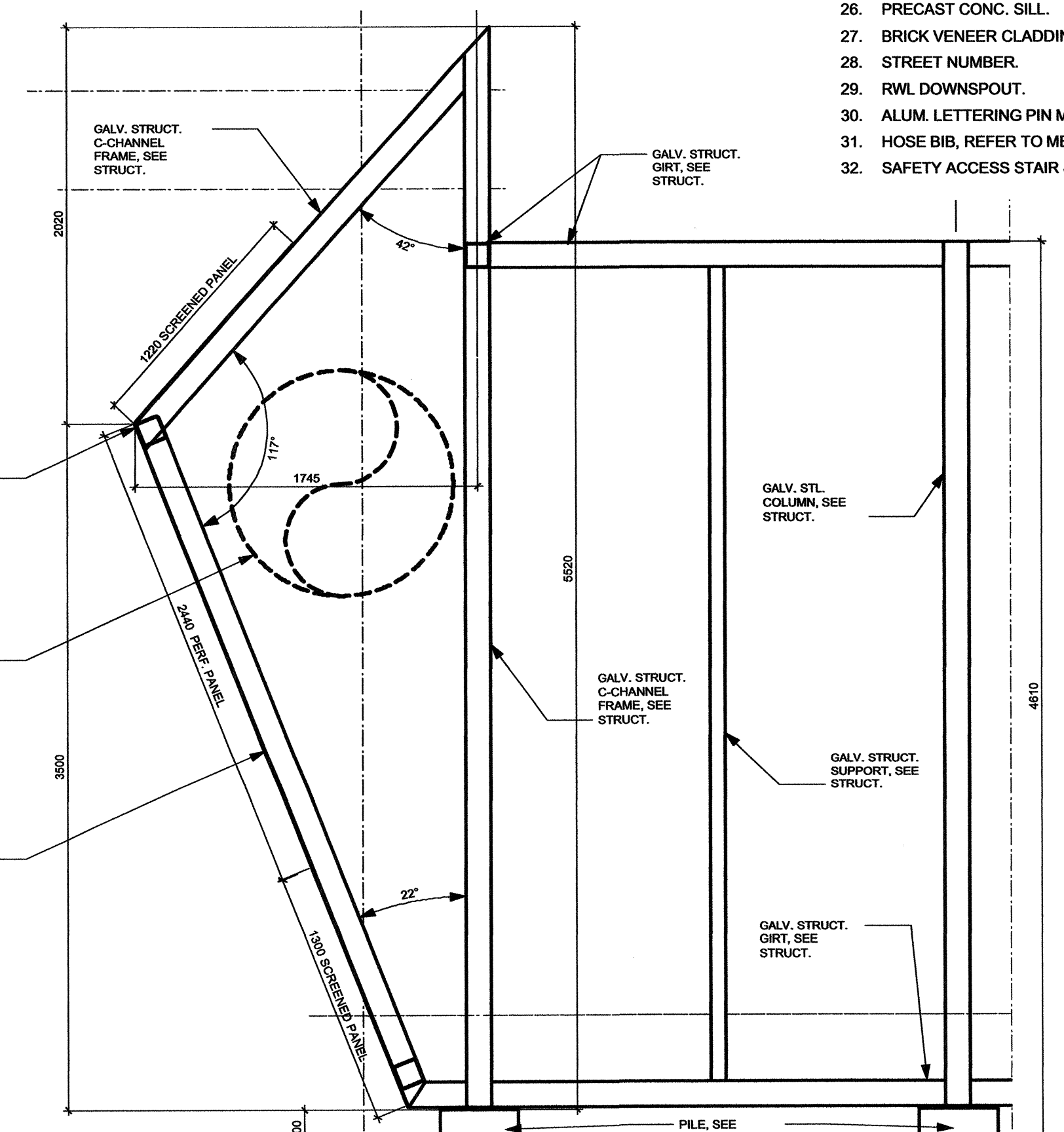
4 PARTIAL NORTH ELEVATION - MECH. ENCLOSURE
Scale: 1:100



5 PARTIAL WEST ELEVATION - MECH. ENCLOSURE
Scale: 1:100



6 PARTIAL SOUTH ELEVATION - MECH. ENCLOSURE
Scale: 1:100



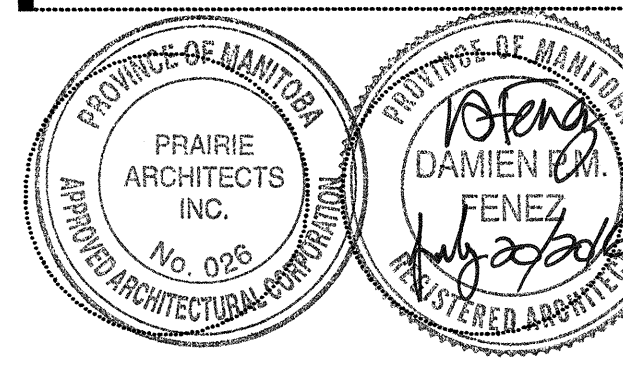
7 MECH. ENCLOSURE STRUCT. FRAME - DETAIL
Scale: 1:25

- EXTERIOR ELEVATION KEYNOTES:**
- MASONRY CONTROL JOINT.
 - EXISTING BUILDING/ ROOF BEYOND TO REMAIN.
 - ENTRY CANOPY.
 - PREFIN. MTL. CAP FLASHING.
 - PREFIN. MTL. OVERFLOW SCUPPER.
 - PREFIN. MTL. ROOFING & CLADDING - STANDING SEAM.
 - DASHED LINE OF MECH. EQUIPMENT ENCLOSURE.
 - PRECAST CONC. PANELS.
 - TONE INDICATES TRANSLUCENT GLAZING UNITS (TGU). REFER TO GLAZING SCHEDULE.
 - BRICK VENEER CLADDING - TYPE C.
 - PREFIN. MTL. WALL CLADDING.
 - MECHANICAL UNIT. REFER TO MECH.
 - STRUCTURAL. REFER TO STRUCT.
 - ALUM. EXTERIOR SIGNAGE, REFER TO SPEC.
 - EXTERIOR MECH. DUCT, REFER TO MECH.
 - SLOPED CONCRETE WALKWAY, REFER TO LANDSCAPE & STRUCT.
 - HANDRAIL, REFER TO LANDSCAPE.
 - EXTERIOR CONCRETE STAIR, REFER TO STRUCT. + LANDSCAPE.
 - DASHED LINE INDICATES EXTERIOR EDGE OF WALL / ROOF BEYOND.
 - AUTO-DOOR OPERATOR ACTUATOR BUTTON. COORDINATE W/ ELEC.
 - EXISTING FIRE DEPARTMENT CONNECTION, TO REMAIN.
 - MECH. ENCLOSURE - GALV. STRUCT. STL. FRAME ON CONC. FDN., SEE STRUCT.
 - FENCE CLADDING TYPE F2 - MTL. CLADDING C/W CUSTOM PERFORATED PATTERN.
 - FENCE CLADDING TYPE F1 - PREFIN. PANEL CLADDING.
 - PRECAST CONC. SILL.
 - BRICK VENEER CLADDING - TYPE B.
 - STREET NUMBER.
 - R/WL DOWNSPOUT.
 - ALUM. LETTERING PIN MOUNTED TO PERF. PANEL.
 - HOSE BIB, REFER TO MECH.
 - SAFETY ACCESS STAIR & LADDER.

Issue / rev.

#	date	issue notes
4	2016.07.15	ISSUED FOR CONSTRUCTION
3	2016.06.13	99% REVIEW

professional seals



project information

SEVEN OAKS POOL RENOVATION & ADDITION
444 ADSUM DRIVE
WINNIPEG, MB
CANADA

client

CITY OF WINNIPEG
4TH FLOOR - 85 KING ST.
WINNIPEG, MB

drawing information

EXTERIOR ELEVATIONS

drawn by: LW
approved by: DF

scale: 1:100
date issued: 2016.07.15
proj. #: 2014.66
rev. #: R-0

SEVEN OAKS POOL RENOVATION & ADDITION
BID OPPORTUNITY NO. 845-2016

A3 01

This drawing must not be scaled. The contractor shall verify all dimensions and other data on site prior to commencement of work. All discrepancies, errors, and omissions are to be reported to the architect. Drawing and specifications are the property of the architect. No reproduction or use of any part of this drawing without the written permission of the architect. The copyright in this drawing and the design it represents, and the name of the architect, are hereby reserved to the architect. All rights reserved.