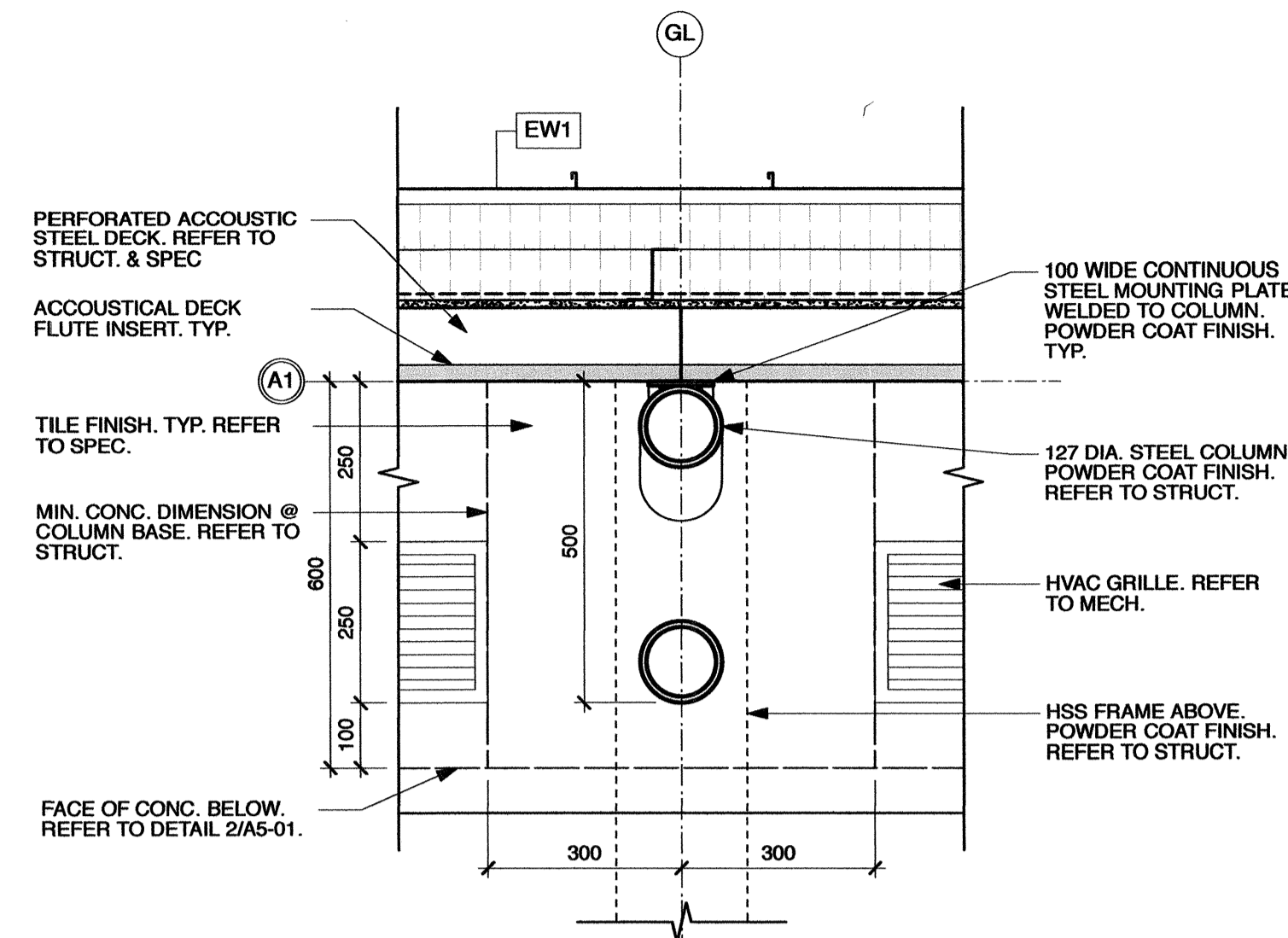
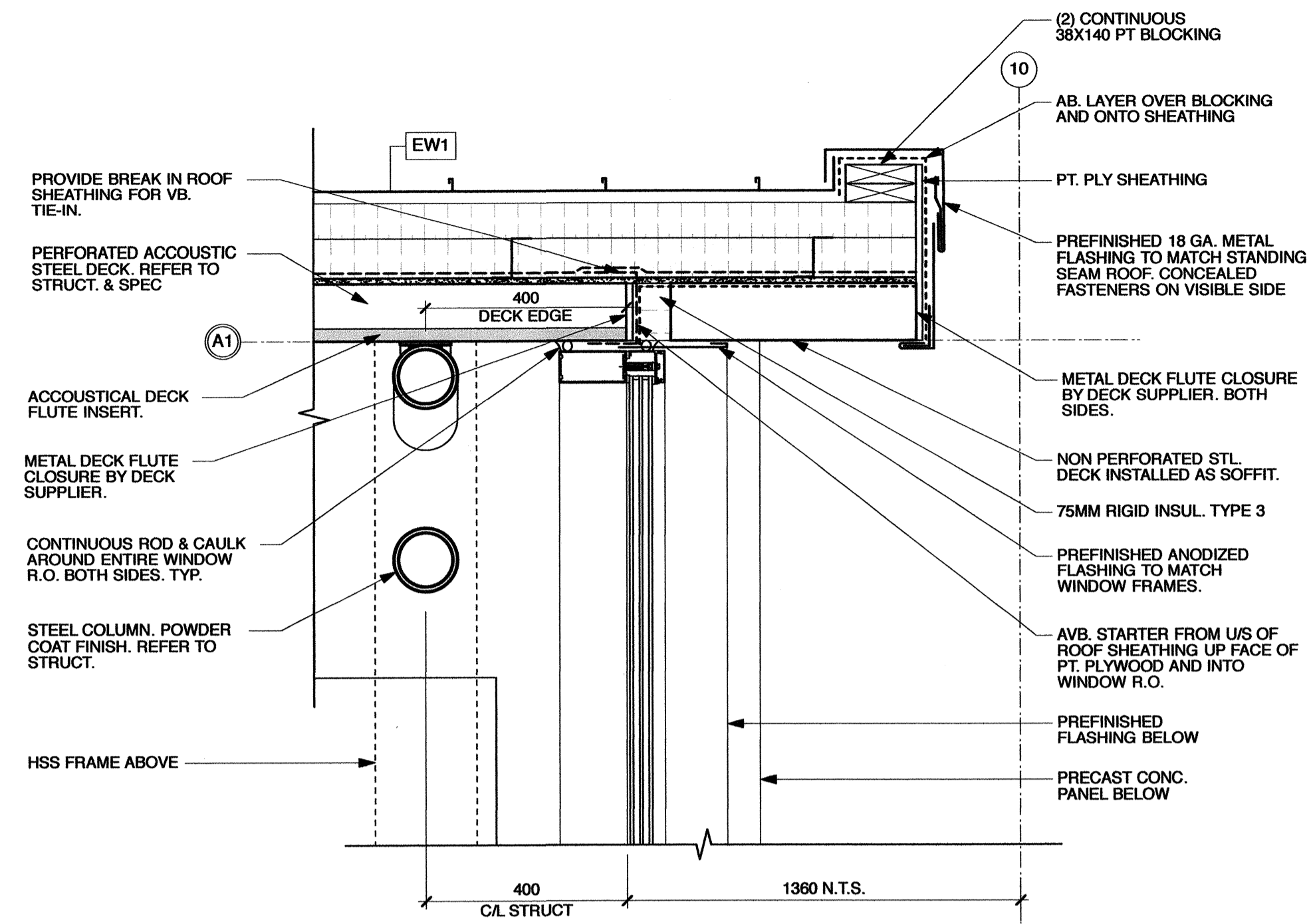


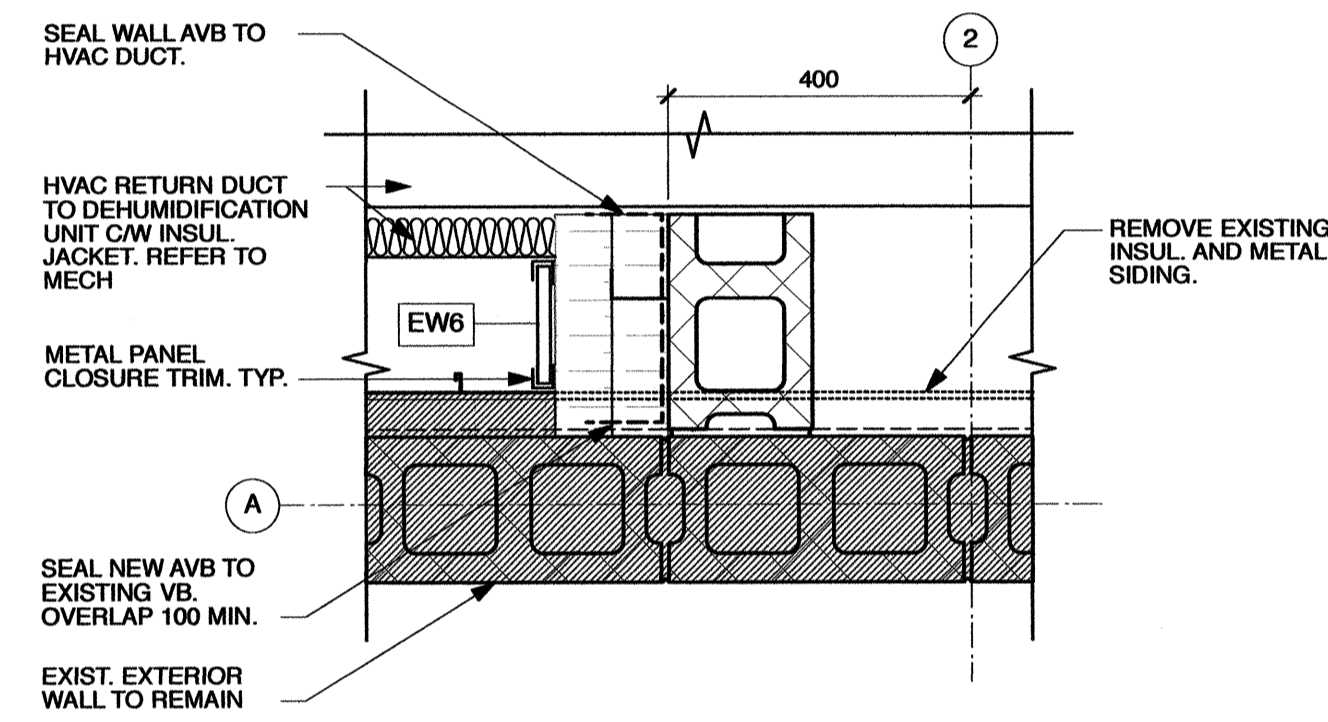
1 TYP. WINDOW JAMB @ EW1
1:10



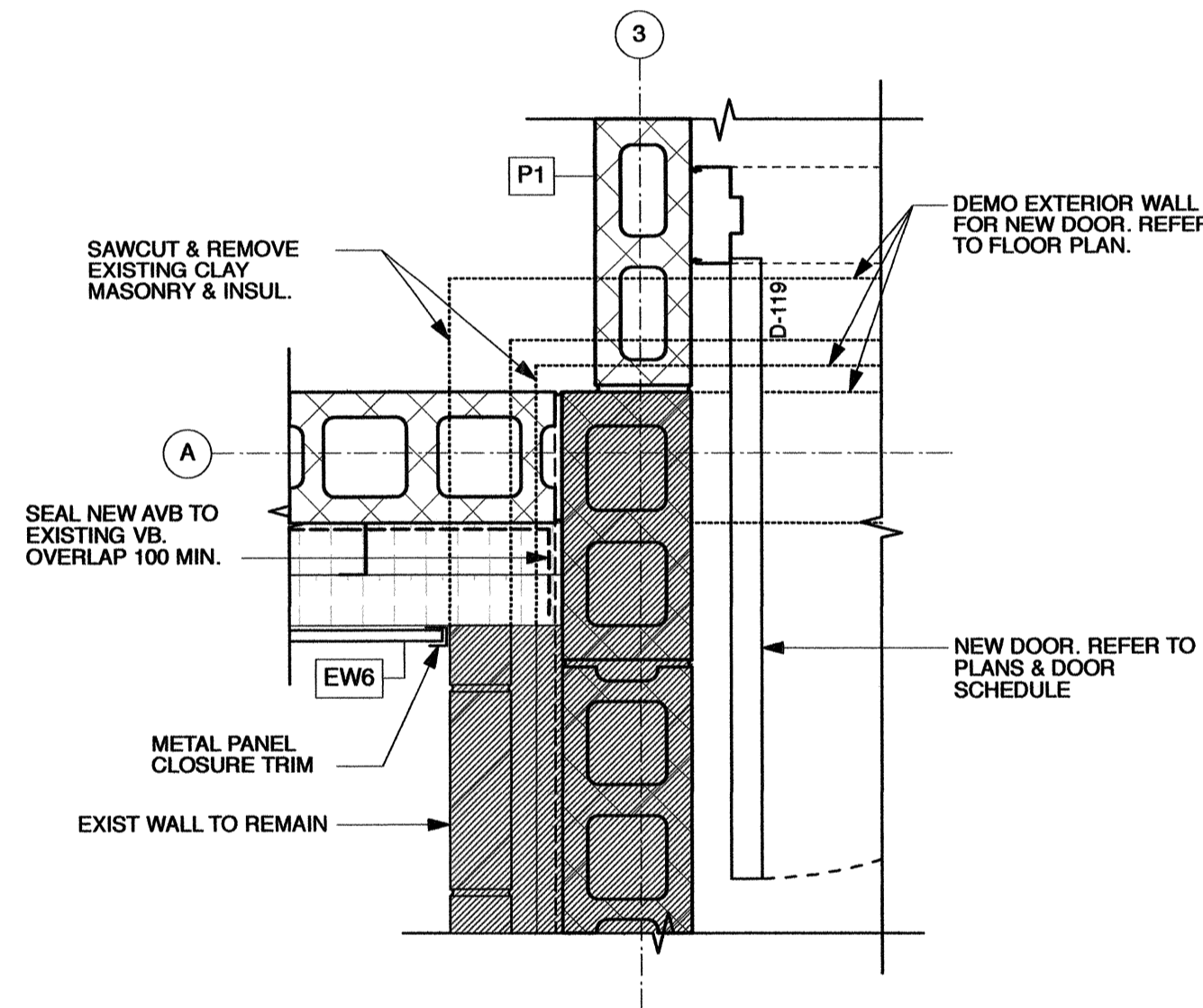
2 TYP. COLUMN DETAIL @ EW1
1:10



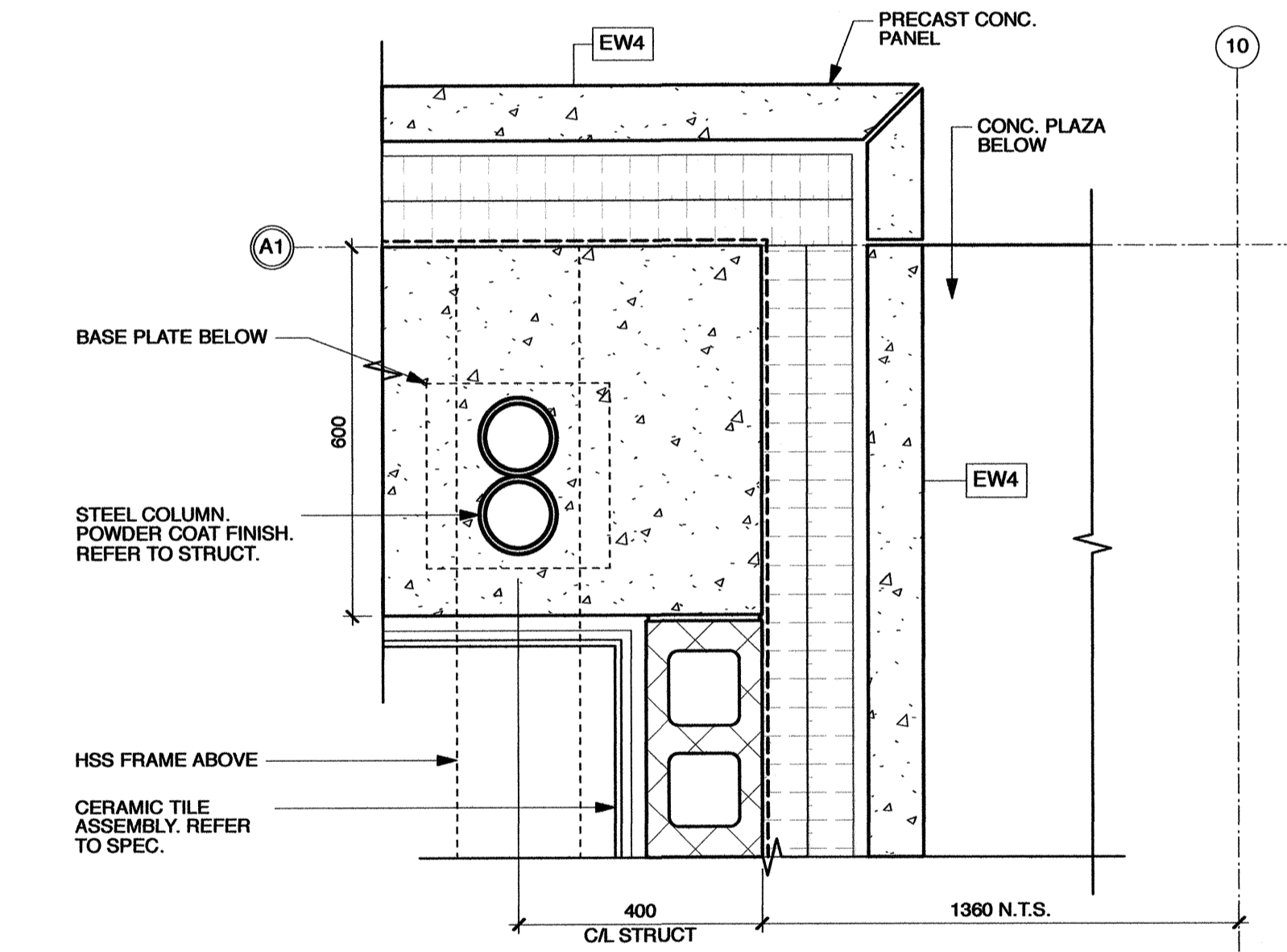
3 NORTH EAST BLDG. CORNER @ ELEV. 101 000
1:10



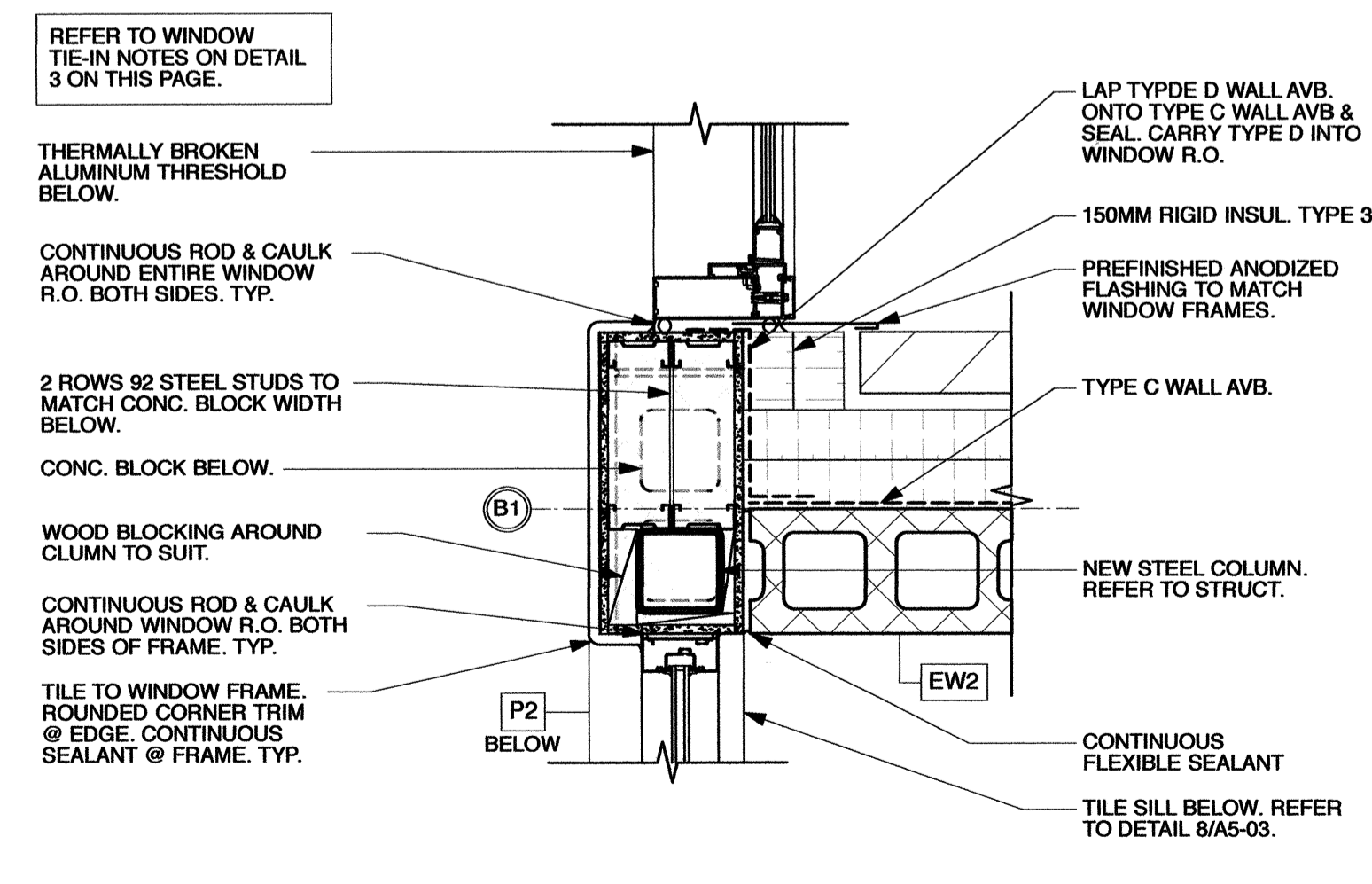
4 EW6 TIE-IN WITH EXIST. WALL @ ELEV. 103 400
1:10



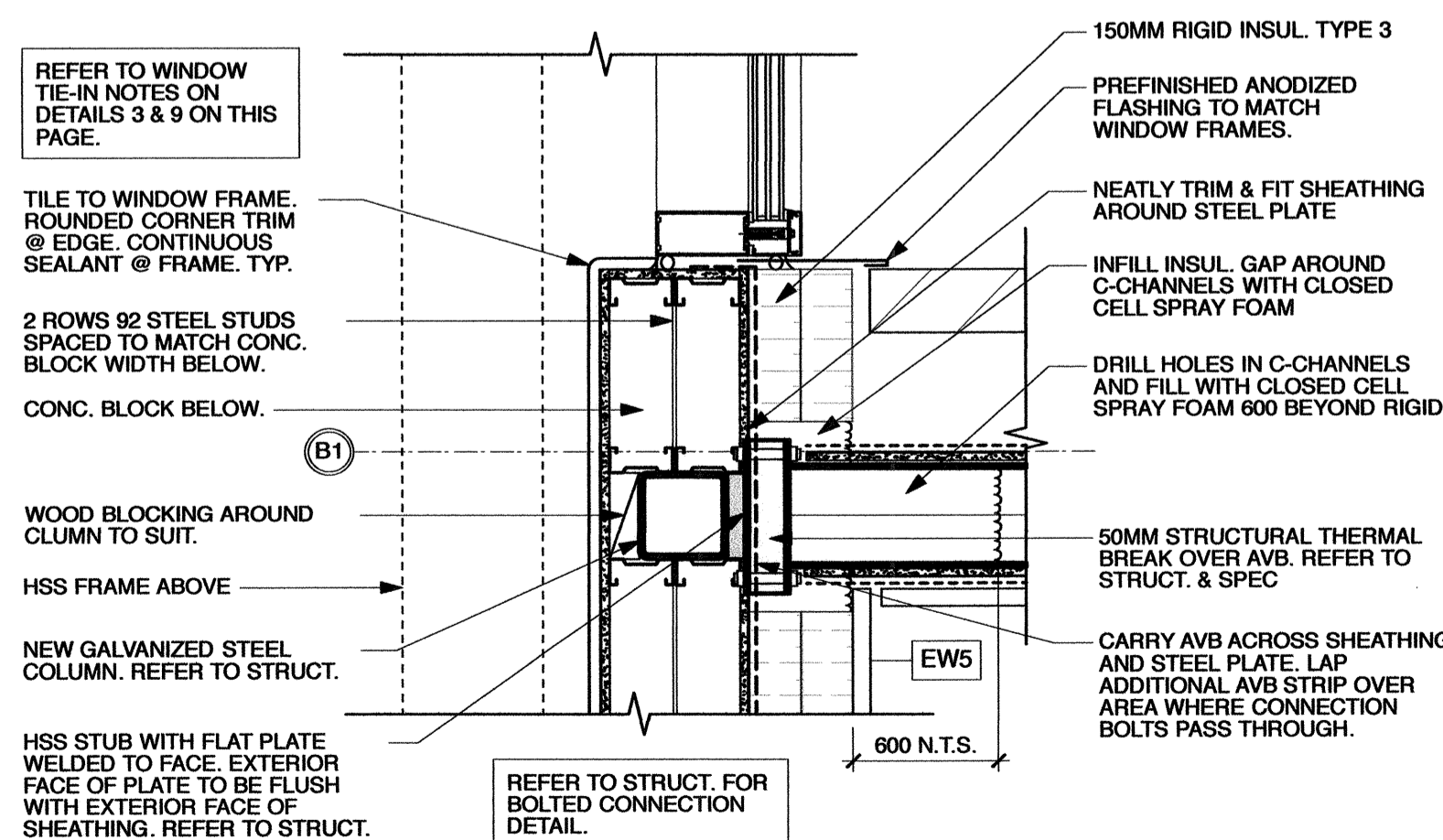
5 EW6 TIE-IN WITH EXIST WALL @ ELEV. 100 200
1:10



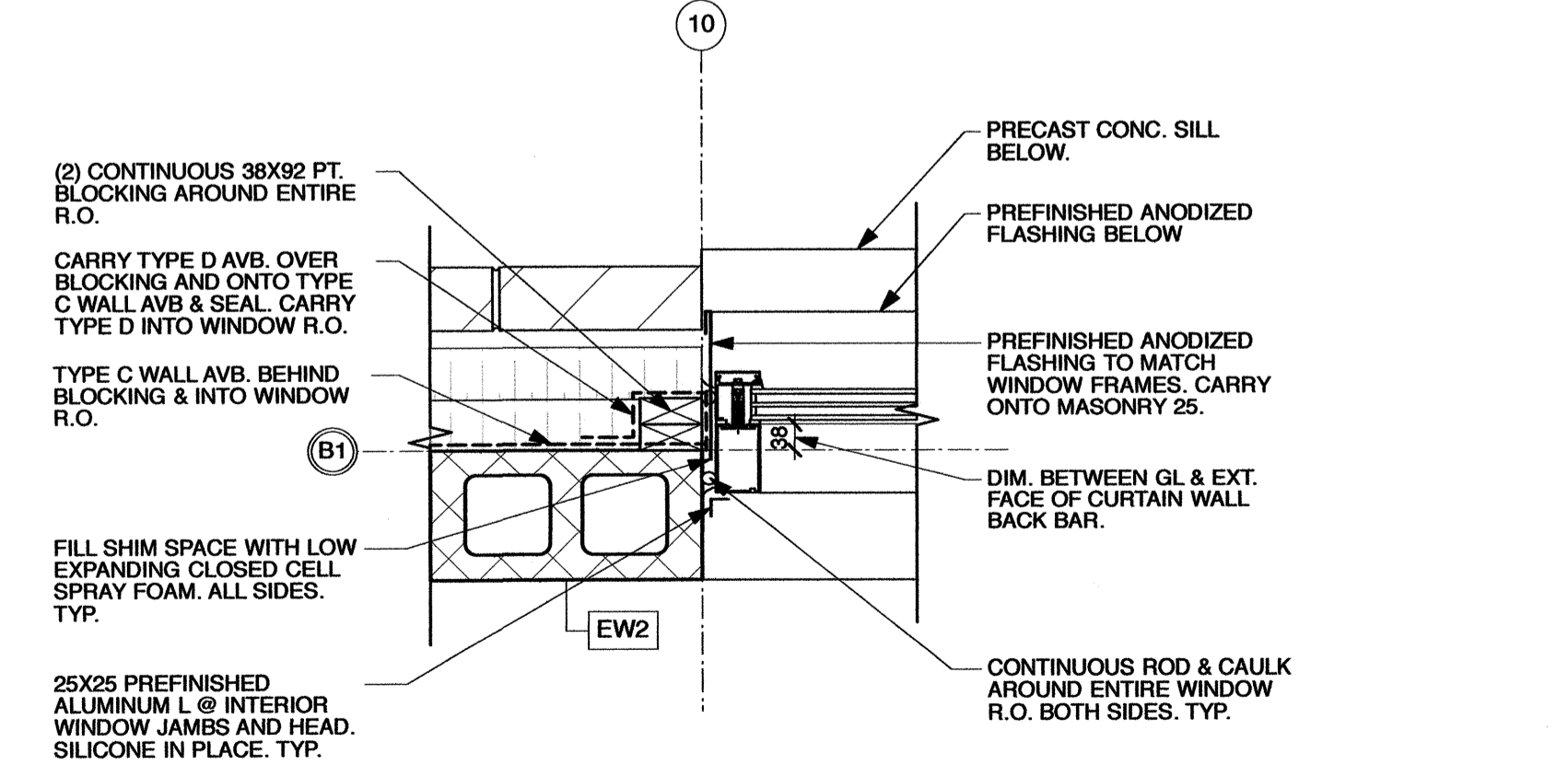
6 NORTH EAST BLDG. CORNER @ ELEV. 100 200
1:10



7 SPLASHPAD EXIT DOOR JAMB @ EW2
1:10



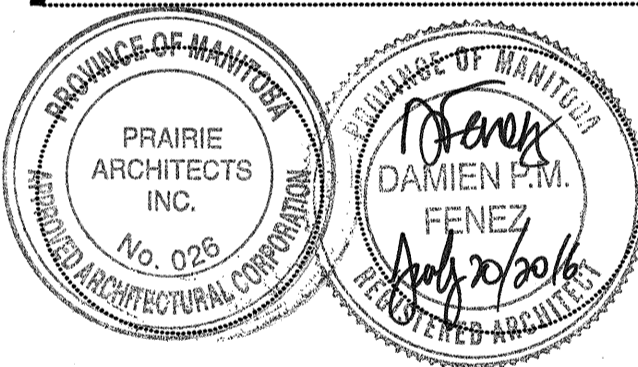
8 THERMAL BREAK DETAIL
1:10



9 TYP. WINDOW JAMB @ EW2
1:10

Issue / rev.	#	date	issue notes

professional seals



project information

SEVEN OAKS POOL RENOVATION & ADDITION

444 ADSUM DRIVE
WINNIPEG, MB
CANADA

client

CITY OF WINNIPEG
4TH FLOOR - 185 KING ST.
WINNIPEG, MB

drawing information

PLAN DETAILS

drawn by: **JDB**
approved by: **DF**

scale: **1:10**
date issued: **2016.07.15**
proj. #: **2014.66**
rev. #: **R-0**

SEVEN OAKS POOL RENOVATION & ADDITION
BID OPPORTUNITY NO. 945-2016

A6 01

This drawing must not be scaled. The contractor shall verify all dimensions and other data on site prior to commencement of work. All discrepancies, errors, and omissions are to be reported to the architect. Drawing and specifications, as instruments of service, are the property of the architect, and when made, must bear its name. All rights reserved to the architect on request.