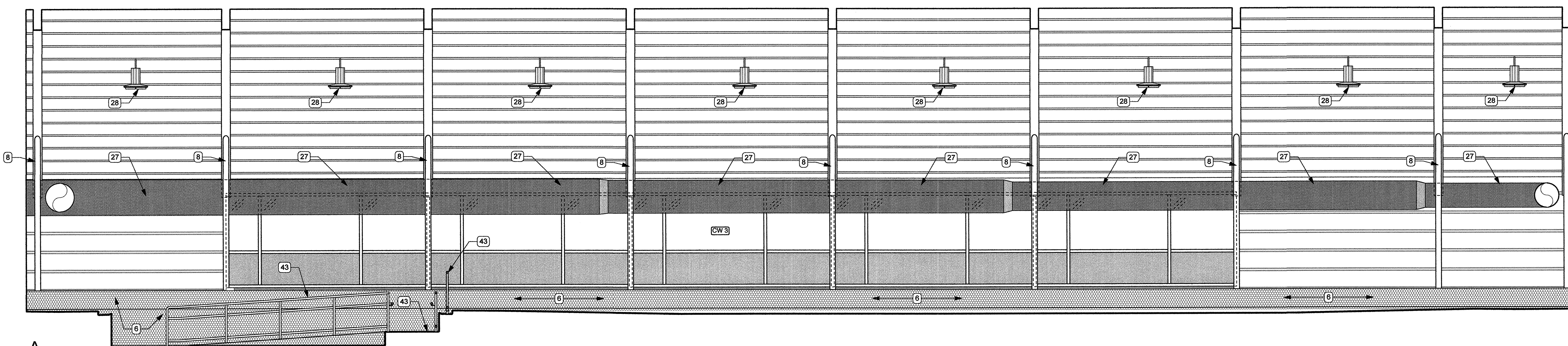
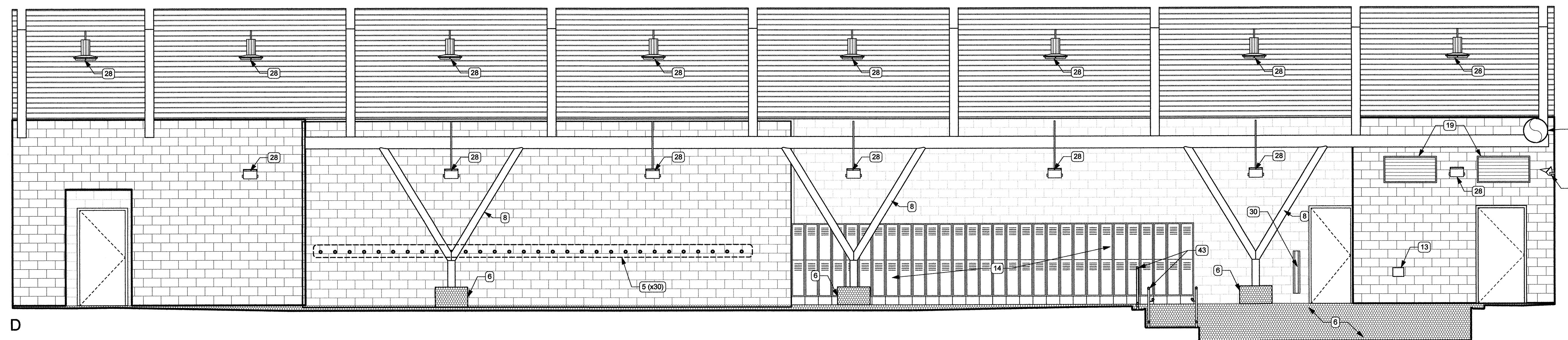


This drawing must not be scaled. The contractor shall verify all dimensions and other data on site prior to commencement of work. All discrepancies, errors, and omissions are to be reported to the architect. Drawing and specifications are instruments of service, and instruments of service are to be reported to the architect. Copyright in the same being reserved to him. No reproduction may be made without the permission of the architect, and when made, must bear the name. All rights to be returned to the architect on request.

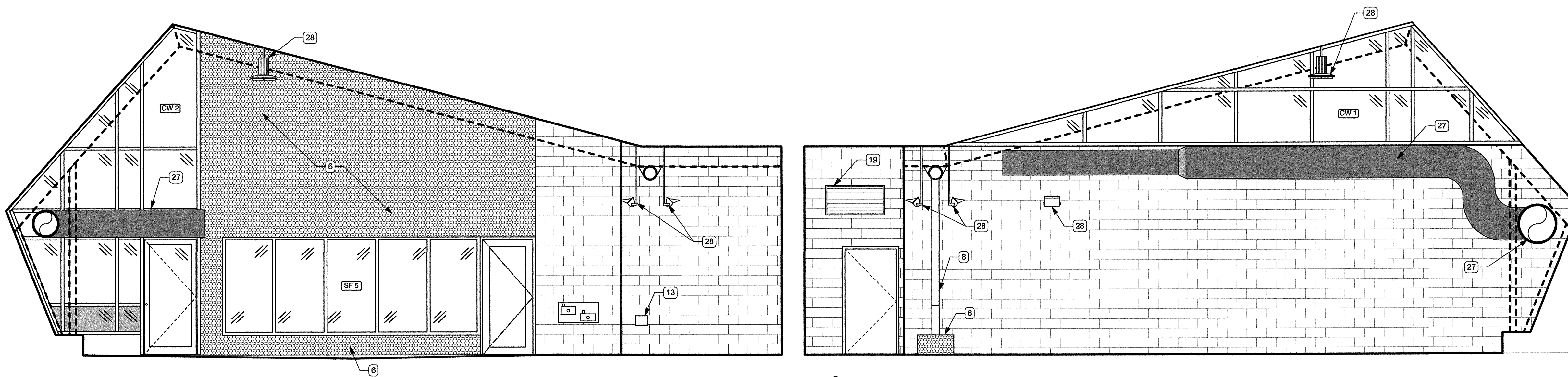


A

1 SPLASH PAD 123
A7-03 1:50



D



B

C

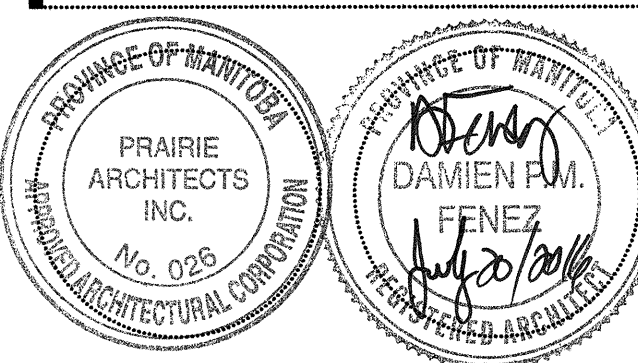
INTERIOR ELEVATION KEYNOTES:

1. MIRROR
2. HAND DRYER
3. GRAB BAR
4. LAVATORY, REFER TO MECH
5. HOOK
6. CERAMIC TILE
7. SANITARY NAPKIN DISPOSAL
8. STL COL. REFER TO STRUCT
9. TOILET PAPER DISPENSER, N.I.C.
10. SOAP DISPENSER, N.I.C.
11. CURTAIN TRACK W/ SHOWER CURTAIN
12. ACCESSIBLE FOLDING SHELF
13. HOSE BIBB, REFER TO MECH
14. LOCKERS
15. TACKBOARD
16. RECESSED SOAP DISH
17. SWIMSUIT DRYER (NIC) ROUGH-IN ONLY
18. FOLD-UP SEAT
19. MECH GRILLES, REFER TO MECH
20. RECEPTION DESK, REFER TO DETAILS
21. SEMI-RECESSED WASTE RECEPTACLES
22. RECESS IN WD CEILING ABOVE FOR DOOR OPERATOR
23. CWB FINISH
24. BABY CHANGE STATION
25. SEMI-RECESSED FIRE EXTINGUISHER
26. CHANGE BENCH
27. EXPOSED DUCT, REFER TO MECH
28. LIGHT FIXTURE, REFER TO ELEC
29. INFILL W/ SALVAGED BRICK FROM EXIST BUILDING
30. AUTO DOOR OPERATOR
31. LOCKER ROOM BENCH
32. TOILET/URINAL PARTITION
33. SHOWER VALVE & FAUCET, REFER TO MECH
34. WALL MOUNTED HYDRANT, REFER TO MECH
35. FIRE ALARM ANNUNCIATOR PANEL, REFER TO ELEC
36. ALUMINUM PIN MOUNTED SIGNAGE
37. ENTRY GATE SYSTEM
38. ACRYLIC SIGNAGE W/ DOUBLED ACRYLIC BACKER OFFSET ADHERED TO CMU
39. ALUMINUM RAIL, REFER TO PLAN FOR REMOVABLE SECTIONS
40. EXISTING GLAZING TO REMAIN, MODIFY AT MULLION AS REQ'D FOR NEW WALL
41. EXISTING WOOD TO REMAIN
42. EXISTING BRICK TO REMAIN
43. RAMP & RAILING INTO POOL, REFER TO DETAILS

Issue / rev.

Issue / rev.	date	issue notes
2	2016.07.15	ISSUED FOR CONSTRUCTION
1	2015.03.03	issued for class 'c' pricing
#		

professional seals



project information

SEVEN OAKS POOL RENOVATION & ADDITION

444 ADSUM DRIVE
WINNIPEG, MB
CANADA

client

CITY OF WINNIPEG
4TH FLOOR - 85 KING ST.
WINNIPEG, MB

drawing information

INTERIOR ELEVATIONS

drawn by: **LW**
approved by: **DF**

scale: **1:100**
date issued: **2016.07.15**
proj. #: **2014.66**
rev. #: **R-0**

SEVEN OAKS POOL RENOVATION & ADDITION
BID OPPORTUNITY NO. 645-2016