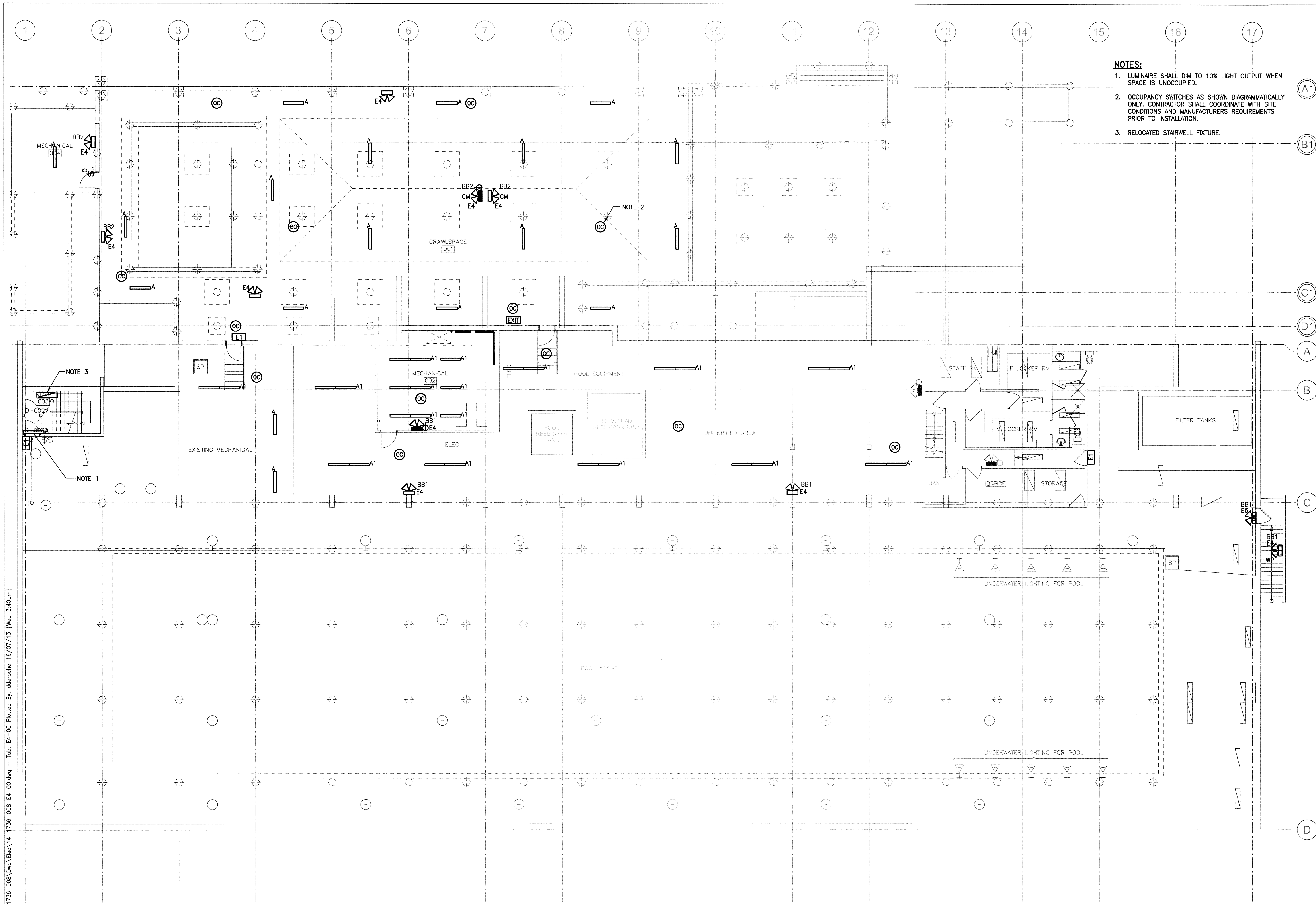


File Name: P:\Projects\2014\14-1736-008\Elec\14-1736-008\_E4-00.dwg - Tab: E4-00 Plotted By: dderoché 16/07/13 [Wed 3:40pm]



- NOTES:**
- LUMINAIRE SHALL DIM TO 10% LIGHT OUTPUT WHEN SPACE IS UNOCCUPIED.
  - OCCUPANCY SWITCHES AS SHOWN DIAGRAMMATICALLY ONLY. CONTRACTOR SHALL COORDINATE WITH SITE CONDITIONS AND MANUFACTURERS REQUIREMENTS PRIOR TO INSTALLATION.
  - RELOCATED STAIRWELL FIXTURE.

**1 CRAWLSPACE LIGHTING PLAN - NEW**  
 2000 0 2000 4000 6000 8000  
 SCALE: 1:100mm (24"x36")

300 - 141 Bannatyne Ave., Winnipeg, MB, R3B 0R3  
 telephone 204.956.0938 fax 204.943.5567  
 web www.prairiearchitects.ca



Issue / rev.	
0	2016/07/15 ISSUED FOR CONSTRUCTION
#	date issue notes

professional seals

project information

**SEVEN OAKS POOL RENOVATION & ADDITION**  
 BID OPPORTUNITY NO. 646-2016

444 Adsum Drive  
 Winnipeg, MB  
 Canada

client

City of Winnipeg  
 4th Floor - 86 King Street  
 Winnipeg, MB

drawing information

**ELECTRICAL CRAWLSPACE LIGHTING - NEW**

drawn by: GCN  
 approved by: *[Signature]*

scale: AS NOTED  
 date issued: 2016.07.15  
 proj. #: 14-1736-008  
 rev. #: R-0

This drawing must not be scaled. The contractor shall verify all dimensions and other data on site prior to commencement of work. All discrepancies, errors, and omissions are to be reported to the architect. Drawing and specifications, as instruments of service, are the property of the architect. The copyright in the same, being reserved to him. No reproduction may be made without the permission of the architect, and when made, must bear his name. All prints to be returned to the architect on request.