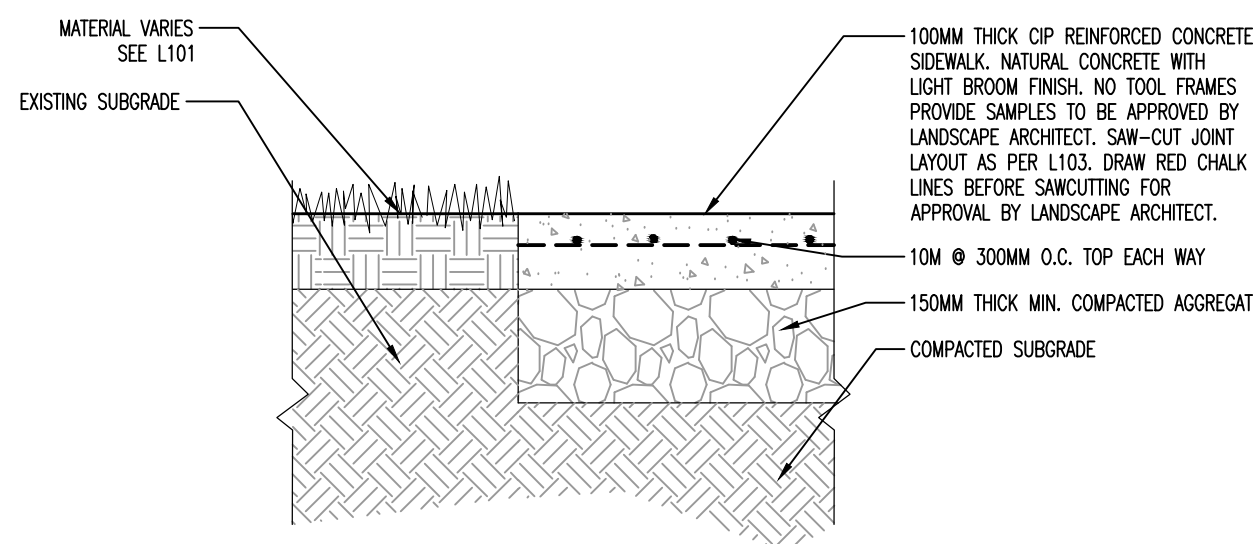


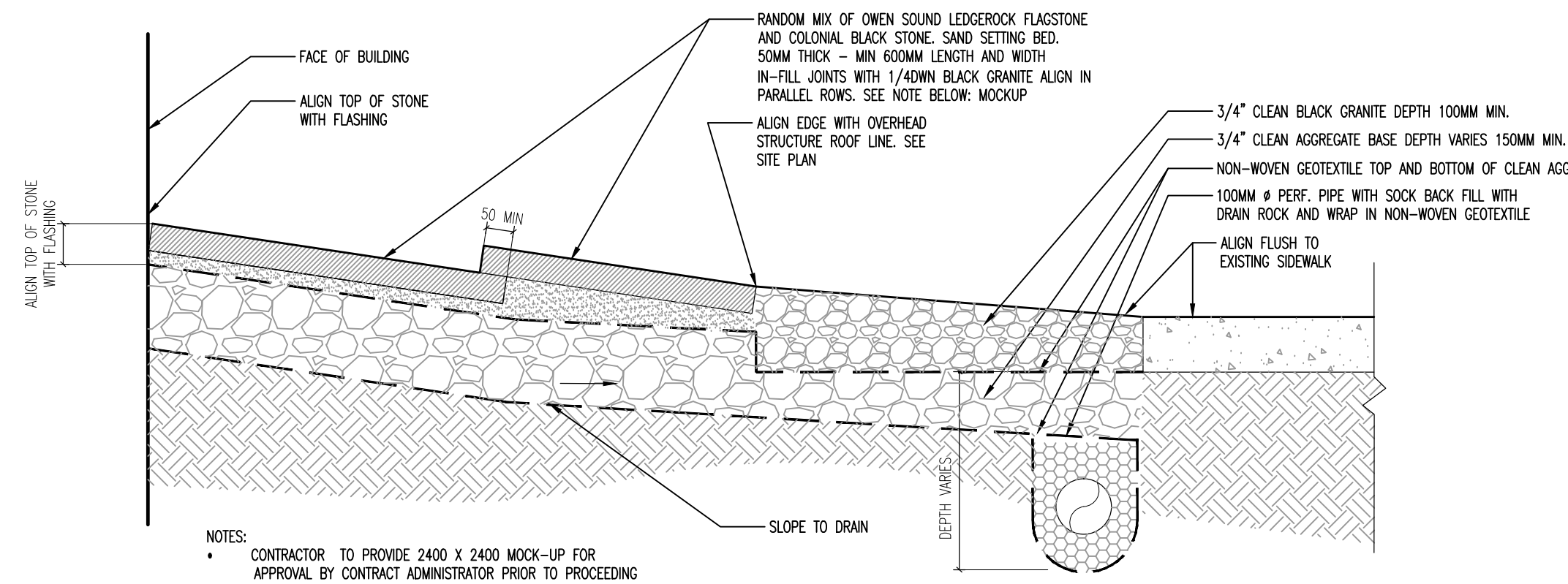
1 AGGREGATE SURFACING W/ STRUCTURAL SOIL, TYP.

NTS



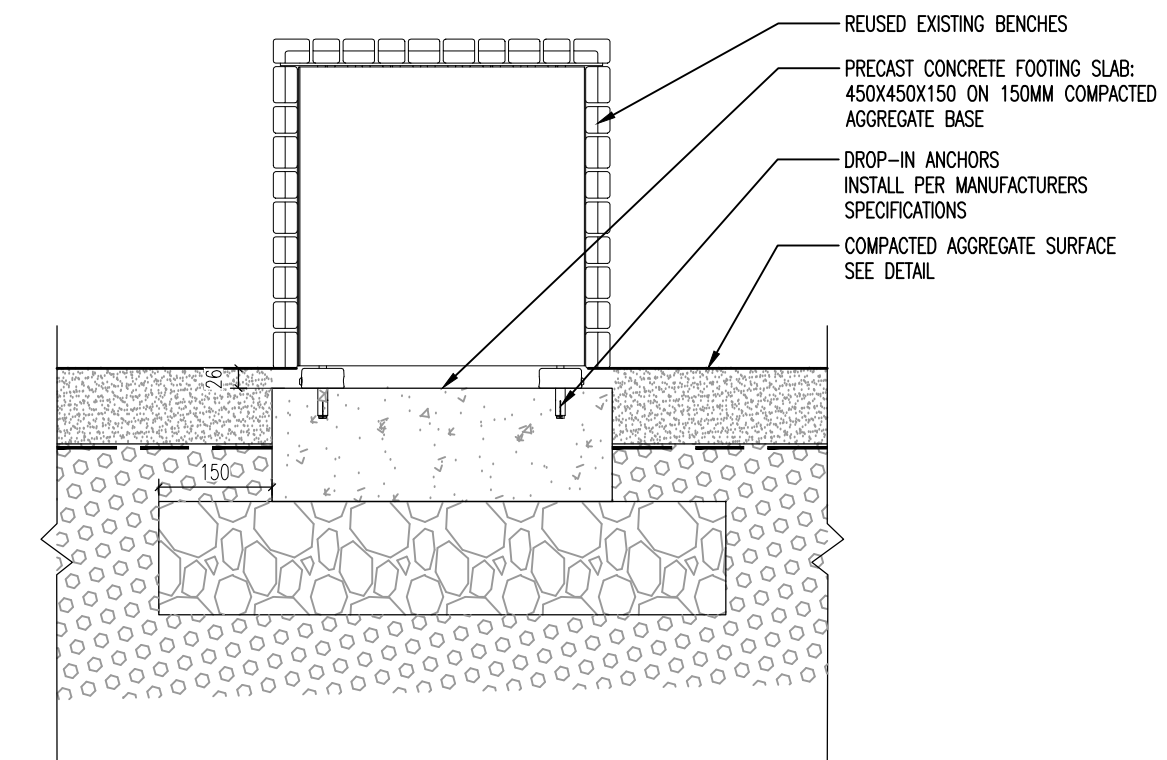
2 CONCRETE PAVEMENT, TYP.

SCALE 1:10 (@24x36)



3 OVER-LAPPING FLAG STONE , TYP.

SCALE 1:10 (@24x36)

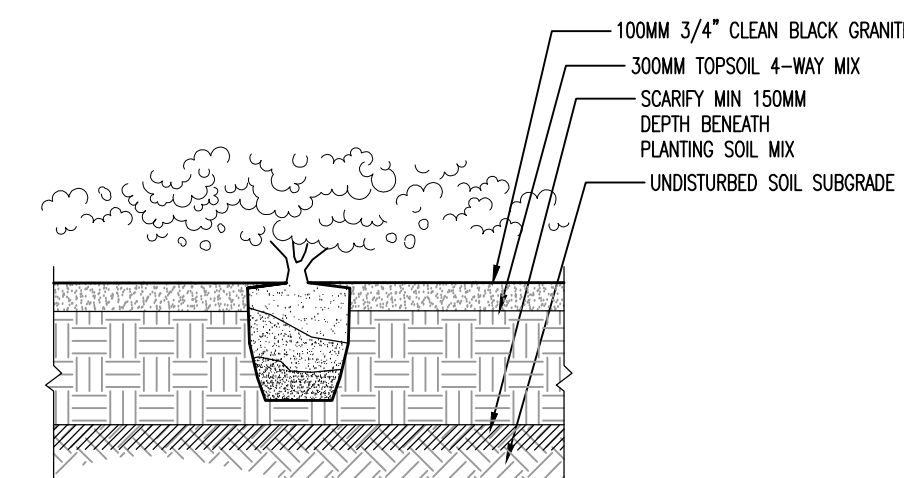
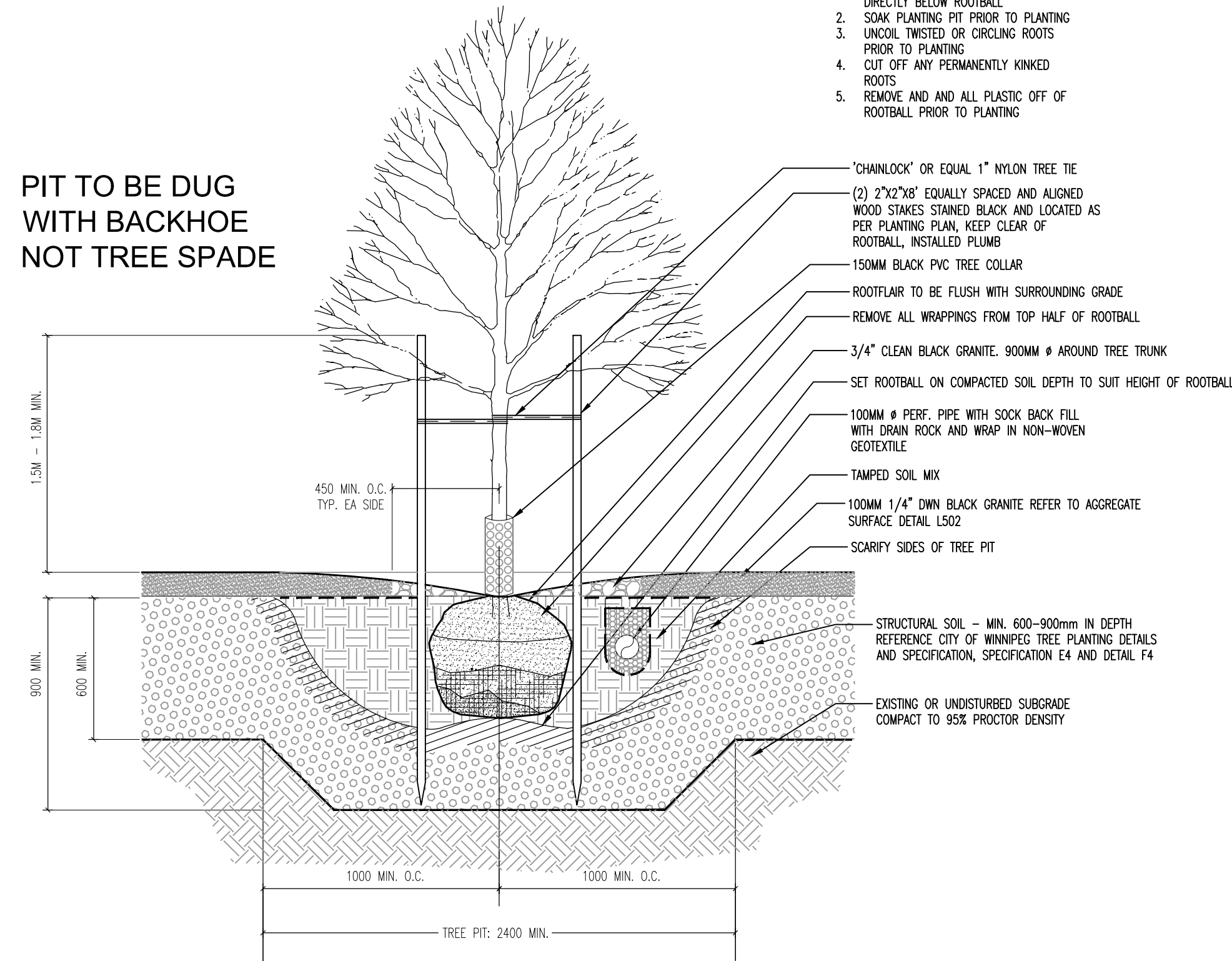


4 BENCH FOOTING IN AGGREGATE SURFACE , TYP.

SCALE 1:10 (@24x36)

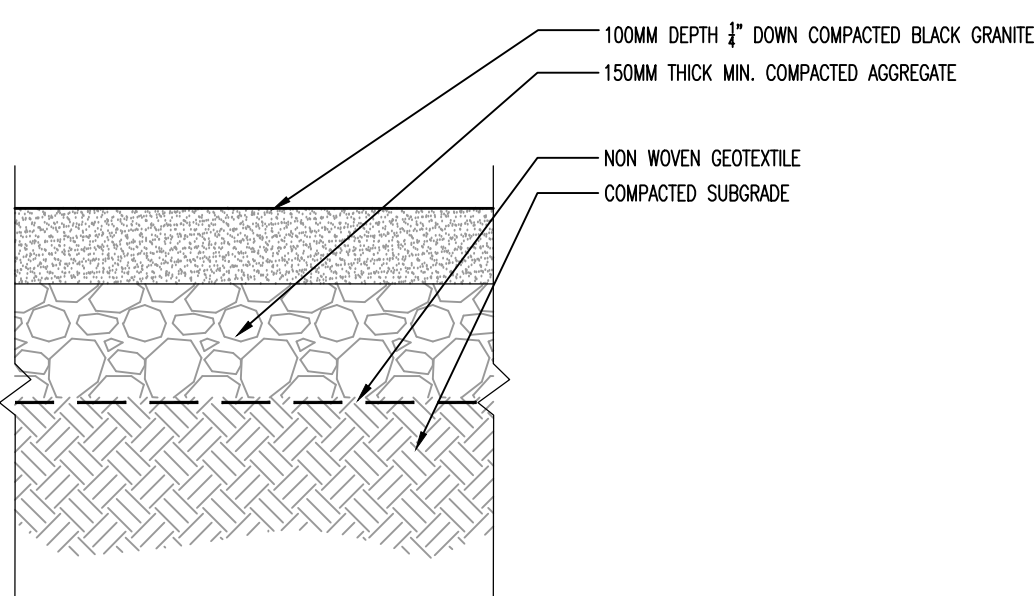
- NOTES:
1. DIG PLANTING PITS DOWN AND OUTWARD SO WATER WILL NOT BE COLLECTED DIRECTLY BELOW ROOTBALL
 2. SOAK PLANTING PIT PRIOR TO PLANTING
 3. UNCOIL TWISTED OR CIRCLING ROOTS PRIOR TO PLANTING
 4. CUT OFF ANY PERMANENTLY KINKED ROOTS
 5. REMOVE AND ALL PLASTIC OFF OF ROOTBALL PRIOR TO PLANTING

PIT TO BE DUG WITH BACKHOE NOT TREE SPADE



7 PLANTING BED, TYP.

SCALE 1:10 (@24x36)



6 AGGREGATE SURFACING, TYP.

SCALE 1:10 (@24x36)

5 DECIDUOUS TREE IN AGGREGATE SURFACE, TYP.

SCALE 1:20 (@24x36)

No.	DATE	REVISION / ISSUANCE
5	YY.MM.DD	-
4	YY.MM.DD	-
3	YY.MM.DD	-
2	YY.MM.DD	-
1	16.07.15	- ISSUED FOR CONSTRUCTION



Consultant
PLAIN PROJECTS
 LANDSCAPE ARCHITECTURE & ENVIRONMENTAL DESIGN
 562 Academy Road / Winnipeg, MB / R3N 0E3
 (204) 930 0272 / www.plainprojects.ca

Project
SEVEN OAKS POOL

Sheet Title
DETAILS

Project No. 645-2016	Sheet L502
Date JULY 2016	