

NOTE: ALL DIMENSIONS ARE MINIMUM REQUIREMENTS.

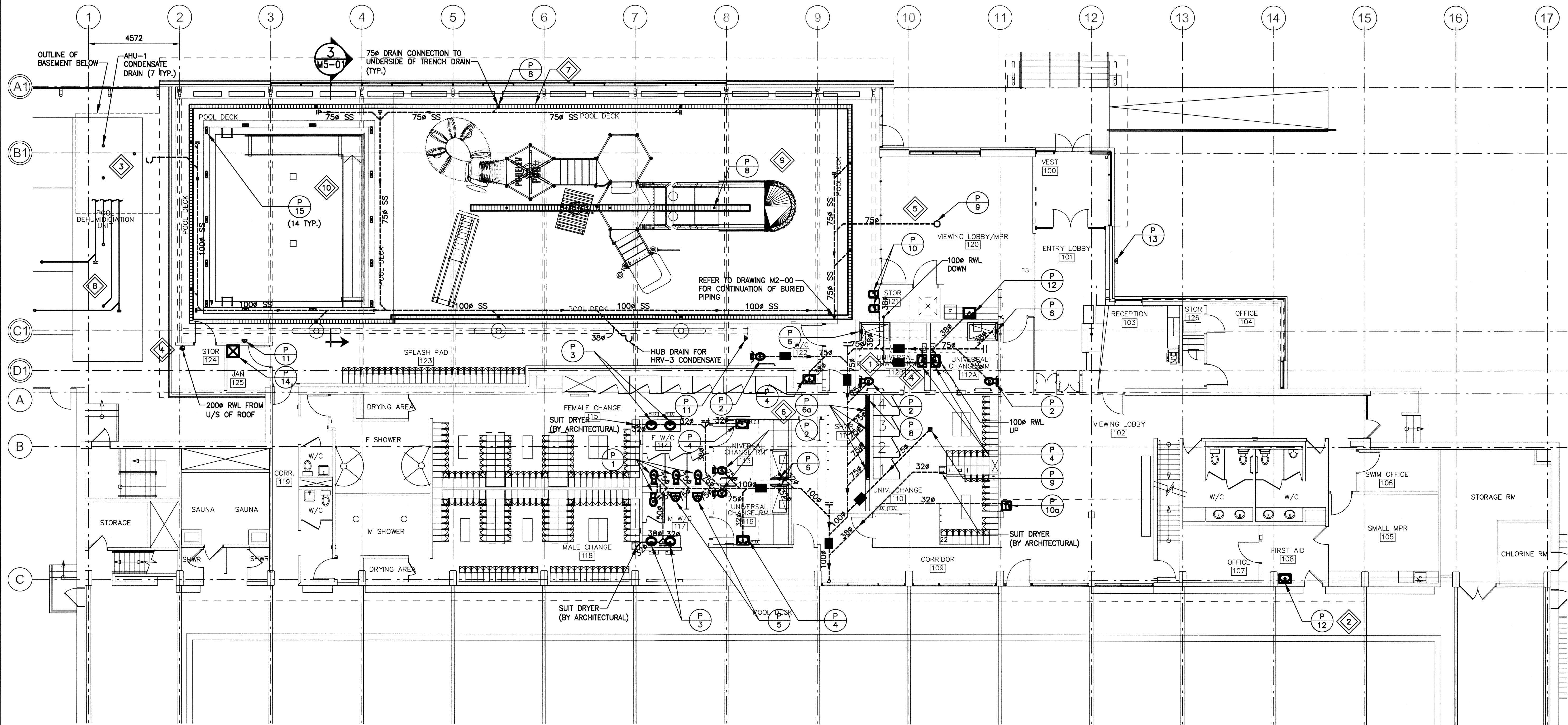
2 UNDER FLOOR PIPING SUPPORT DETAIL
SCALE: N.T.S.

LEGEND:

- | | | | |
|--------|------------------------------------|---------|-------------------------------|
| (P 1) | WATER CLOSET | (P 9) | STANDARD FLOOR DRAIN |
| (P 2) | BARRIER FREE WATER CLOSET | (P 10) | DRINKING FOUNTAIN (SPASH PAD) |
| (P 3) | LAVATORY | (P 10a) | DRINKING FOUNTAIN (LOBBY) |
| (P 4) | WALL MOUNTED BARRIER FREE LAVATORY | (P 11) | WALL HYDRANT |
| (P 5) | URINAL | (P 12) | COUNTER MOUNTED SINK (MPR) |
| (P 6) | SHOWER | (P 13) | NON-FREEZE WALL HYDRANT |
| (P 6a) | SHOWER (TEMPERED WATER) | (P 14) | JANITOR SINK |
| (P 7) | BARRIER FREE SHOWER | (P 15) | POOL GUTTER DRAIN |
| (P 8) | LINEAR FLOOR DRAIN | | |

KEYNOTES:

- 1 NEW SANITARY SEWER PIPING HUNG FROM CEILING IN BASEMENT BELOW.
- 2 RECONNECT NEW SINK TO EXISTING PLUMBING IN BASEMENT.
- 3 LOCATE DRAIN NEAR AHU DRAIN PAN AND GAS CONDENSATE DRAIN. RUN ALL CONDENSATE DRAINS FROM AHU-1 TO DRAIN COMPLETE WITH P-TRAP (INDIRECT CONNECTION).
- 4 RUN RAIN WATER LEADER IN CEILING SPACE INTO STORAGE ROOMS. MOUNT NEW RAIN WATER LEADER TIGHT TO WALL IN LOCATIONS SHOWN.
- 5 DRAINAGE PIPING TO BE HUNG FROM STRUCTURAL SLAB. REFER TO DETAIL 2 ON THIS DRAWING.
- 6 INSULATED, TEMPERED, COPPER WATER SUPPLY LINE TO BE RUN DOWN TO BASEMENT THROUGH CONCRETE BLOCK WALL. PUSH BUTTON TO BE MOUNTED ON A 100mmx100mm POWDER COATED 316 STAINLESS STEEL PLATE AND SECURED TO THE CONCRETE BLOCK WALL. CONTROL WIRING FOR BUTTON TO BE INSTALLED IN CONDUIT IN CONCRETE BLOCK WALL TO PERMIT FUTURE REPLACEMENT. SEAL ALL JOINTS/CONNECTIONS WATER TIGHT.
- 7 SUPPLY AND INSTALL TRENCH DRAIN SYSTEM AROUND PERIMETER OF SPLASH PAD. TIE INTO DRAIN PIPING AT LOCATIONS SHOWN. PROVIDE ALL CORNERS AND END CAPS NEEDED FOR INSTALLATION.
- 8 CONTRACTOR TO INSTALL EXTERIOR DRAIN PIPING BELOW AHU. CONFIRM NUMBER OF DRAINS WITH AHU SUPPLIER. CONNECTIONS TO AHU DRAINS SHALL BE DONE THROUGH FLOOR HATCHES IN AHU. ALL PIPING SHALL BE INSULATED IN ACCORDANCE WITH DETAIL 2 ON DRAWING MS-02. ALL TRAPS SHALL BE INSTALLED IN THE BASEMENT TO PREVENT FROM FREEZING.
- 9 SUPPLY AND INSTALL TRENCH DRAINS FOR SPLASH PAD. DRAIN CONNECTIONS TO POOL WATER CIRCULATION SYSTEM BY OTHERS. CONFIRM DRAIN SIZE WITH POOL EQUIPMENT SUPPLIER.
- 10 SUPPLY AND INSTALL POOL GUTTER DRAIN. DRAIN CONNECTIONS TO POOL WATER CIRCULATION SYSTEM BY OTHERS. CONFIRM DRAIN SIZE AND QUANTITY OF DRAINS WITH POOL EQUIPMENT SUPPLIER.



1 MAIN FLOOR PLAN - NEW PLUMBING
SCALE: 1:100

Issue / rev.

1	2016/07/27	RE-ISSUED FOR CONSTRUCTION
0	2016/07/15	ISSUED FOR CONSTRUCTION
#	date	issue notes

professional seals



project information

SEVEN OAKS POOL

444 Adsum Drive
Winnipeg, MB
Canada

client

drawing information

**MECHANICAL MAIN FLOOR PLAN
NEW PLUMBING**

drawn by: RLR

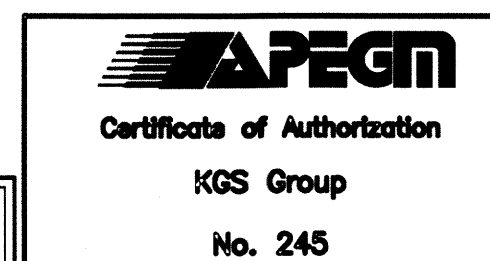
approved by:

scale: AS NOTED

date issued: 2016.07.27

proj. #: 14-1736-008

rev. #: R-1



SCALE VERIFIED BY:

**SEVEN OAKS POOL
RENOVATION & ADDITION**
BID OPPORTUNITY NO. 645-2016

**M2
01**