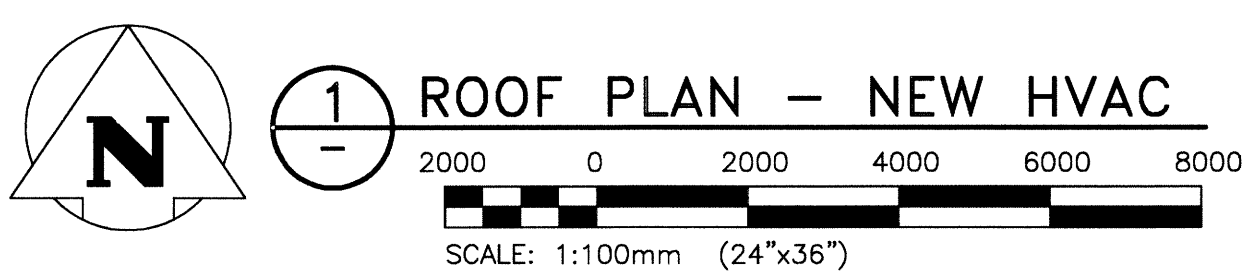
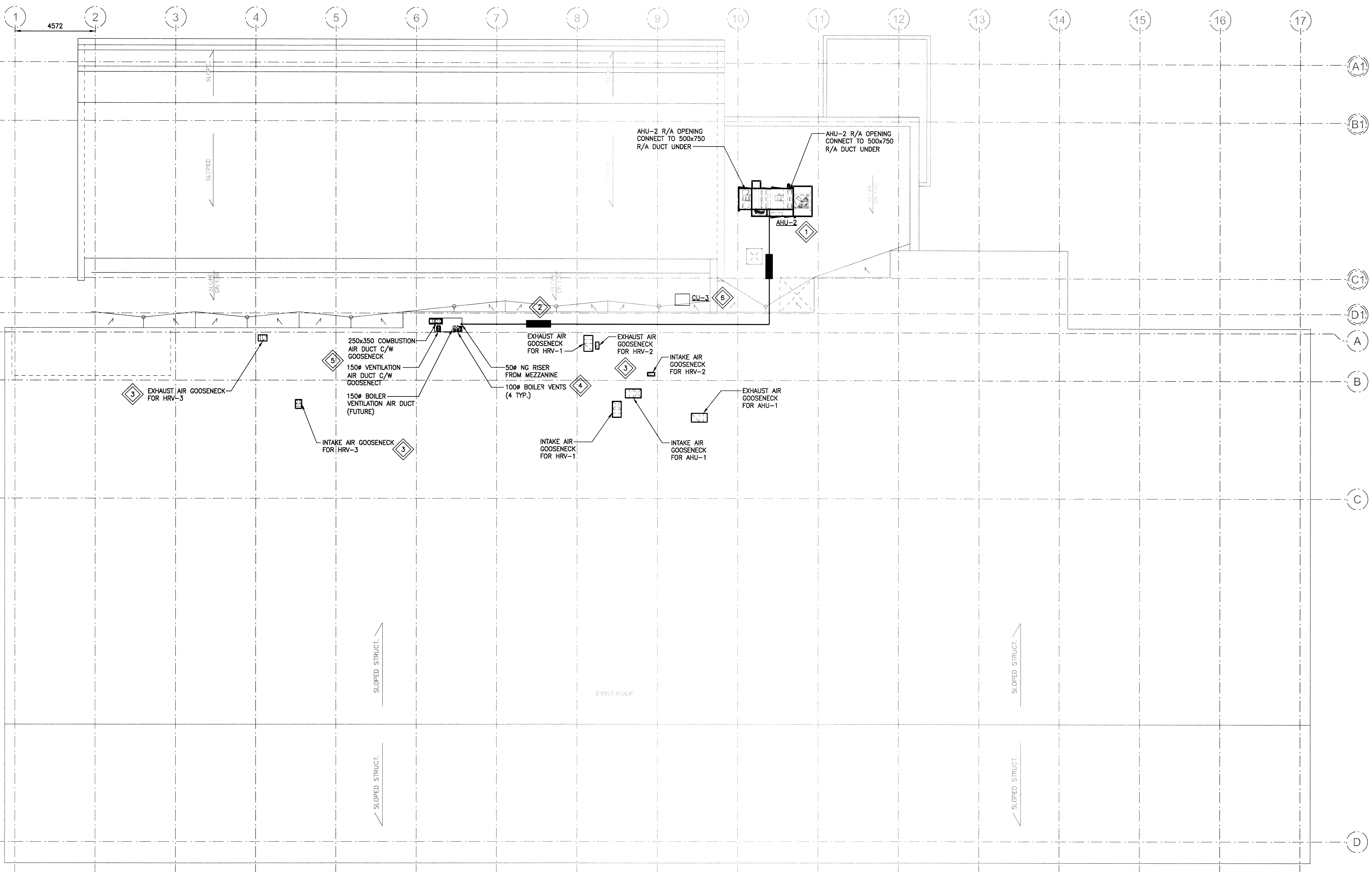


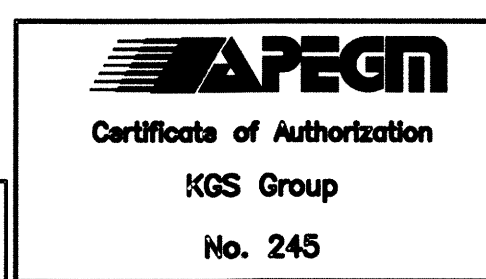
File Name: P:\Projects\2014\14-1736-008\Mech\14-1736-008\_M3-03.dwg - Tab: M3-03 Plotted By: dderoché 16/07/13 [Wed 4:08pm]



- KEYNOTES:**
- 1 SUPPLY AND INSTALL AHU-2 ON PERIMETER ROOF CURB AND CONNECT DUCTWORK AS SHOWN ON M3-01 AND DETAILED ON M5-01. SEAL ALL PENETRATIONS WATER AND AIR TIGHT.
  - 2 PROVIDE AND INSTALL GAS PIPING FROM NEW BASEMENT MECHANICAL ROOM TO AHU-2. SUPPORT ROOF TOP GAS PIPING WITH NEOPRENE MANUFACTURED SUPPORTS.
  - 3 SUPPLY AND INSTALL ROOFTOP GOOSENECK DUCT FOR EXHAUST AIR AND INTAKE AIR FOR EQUIPMENTS HRV-1, HRV-2, HRV-3 AND AHU-1. LOCATE EXHAUST AIR AND INTAKE AIR A MINIMUM OF 3 METERS (10 FT.) APART.

- 4 SUPPLY AND INSTALL BOILER FLUE VENTS THROUGH ROOF. SEAL WATER AND AIR TIGHT. LOCATE VENTS A MINIMUM 5 METERS (15 FT) AWAY FROM AIR INTAKE.
- 5 SUPPLY AND INSTALL COMBUSTION AIR DUCT AND VENTILATION AIR DUCT FROM THE NEW MECHANICAL ROOM TO THE ROOF. PROVIDE GOOSENECK ON COMBUSTION AIR DUCT AND RAIN CAP ON VENTILATION AIR DUCT. ENSURE PROPER DISTANCES BETWEEN INTAKES ARE MAINTAINED ACCORDING TO CODE.
- 6 EXISTING CONDENSING UNIT RELOCATED FROM GRADE. DESIGN, SIZE, SUPPLY AND INSTALL ALL INSULATED REFRIGERANT PIPING. ROUTE PIPING THROUGH PITCH POCKET TO INDOOR AHU.

SCALE VERIFIED BY: *Stk*



Issue / rev.		
0	2016/07/15	ISSUED FOR CONSTRUCTION
#	date	issue notes

professional seals

project information

**SEVEN OAKS POOL**

444 Adsum Drive  
Winnipeg, MB  
Canada

client

City of Winnipeg  
4th Floor - 86 King Street  
Winnipeg, MB

drawing information

**MECHANICAL ROOF PLAN NEW HVAC**

drawn by: RLR  
 approved by: *Stk*

scale: AS NOTED  
 date issued: 2016.07.15  
 proj. #: 14-1736-008  
 rev. #: R-0

**SEVEN OAKS POOL RENOVATION & ADDITION**  
 BID OPPORTUNITY NO. 645-2016

This drawing must not be scaled. The contractor shall verify all dimensions and other data on site prior to commencement of work. All discrepancies, errors, and omissions are to be reported to the architect. Drawing and specifications, as instruments of service, are the property of the architect. The copyright in the same being reserved to him. No reproduction may be made without the permission of the architect, and when made, must bear his name. All prints to be returned to the architect on request.