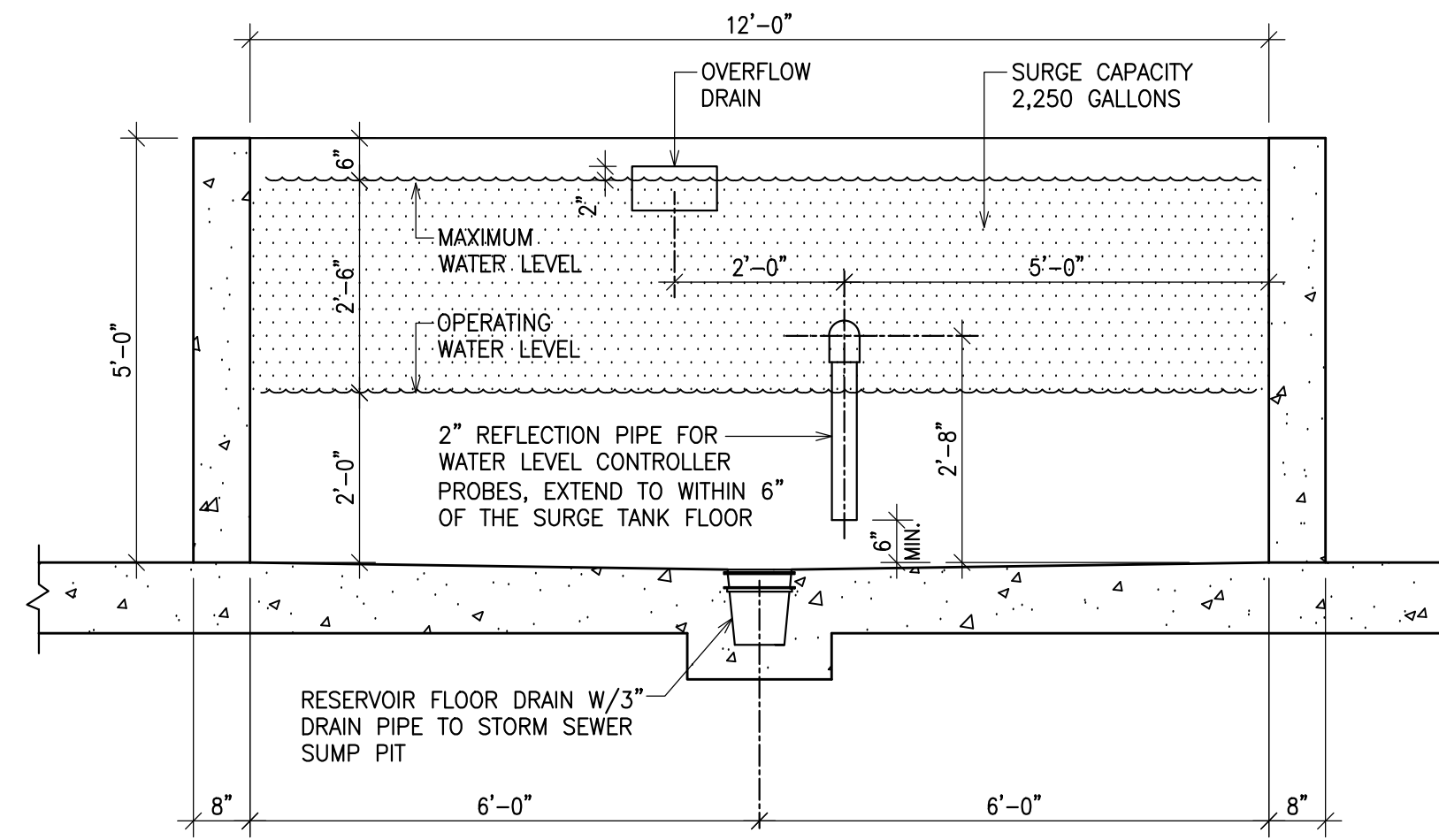


DATA	
SPRAY PAD RESERVOIR	
DIMENSIONS:	10'-0" x 12'-0"
WATER DEPTH:	4'-6"
CAPACITY:	4,050 GALLONS
FLOW RATE:	405 GPM
VOLUME TURN OVER RATE:	10 MINUTES

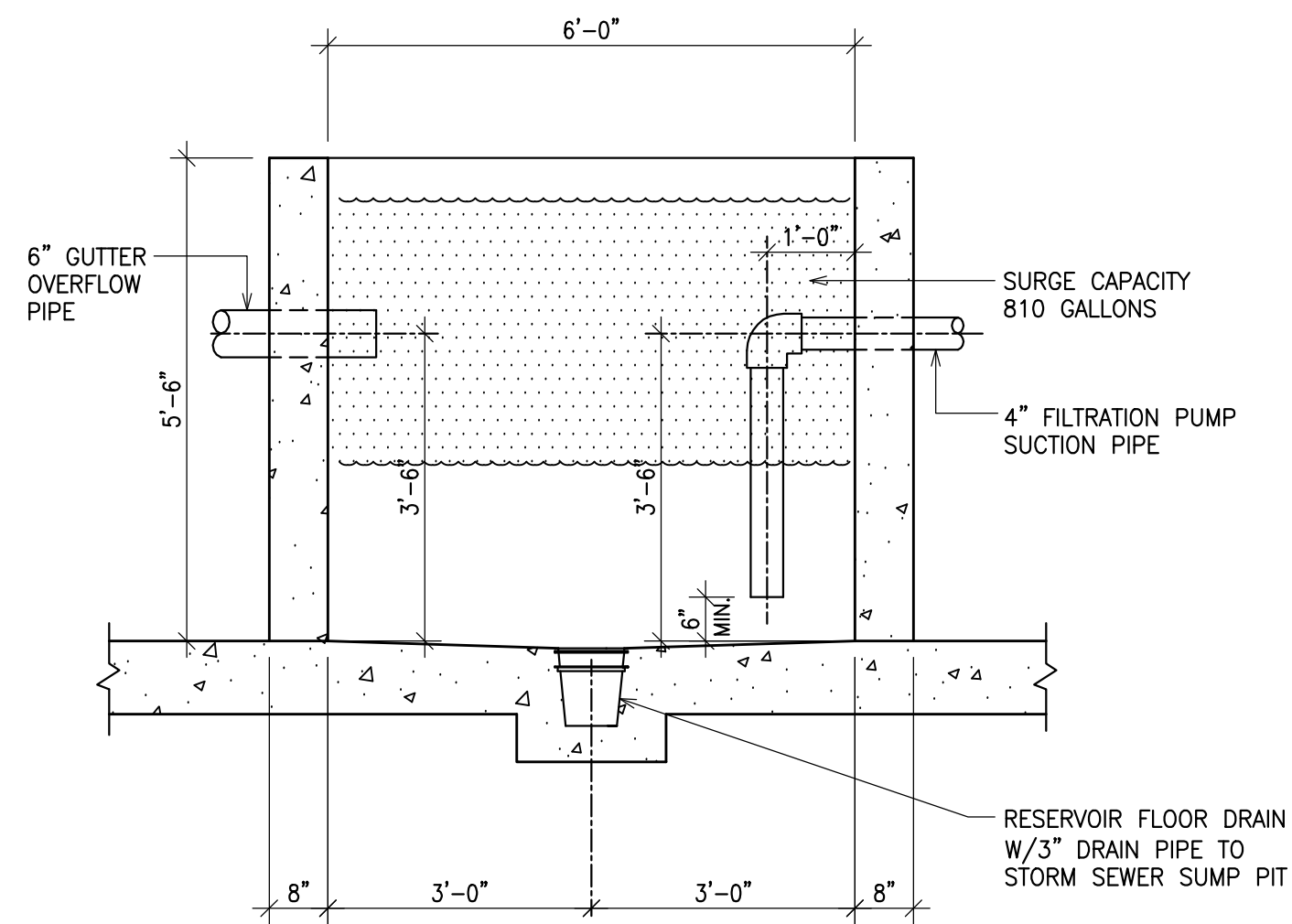


EQUIPMENT LIST - SPRAY PAD

ITEM	TYPE	QTY.	DESCRIPTION
P1	SPRAY PAD CIRC. PUMP W/ STRAINER LOCATION: MECH. ROOM	1	PENTAIR EQ 750, 7.5HP, 208V, 3 Phase, 400 USGPM @ 55ft. HD
P2	FEATURE PUMP W/ STRAINER - SPRAYS ON STRUCTURE	1	PENTAIR EQ 750, 7.5HP, 208V, 3 Phase, 420 USGPM @ 50ft. HD
P3	FEATURE PUMP W/ STRAINER - GROUND SPRAYS	1	PENTAIR EQ 500, 5.0HP, 208V, 3 Phase, 300 USGPM @ 50ft. HD
P4	FEATURE PUMP W/ STRAINER - TWISTER SLIDE	1	PENTAIR EQ 500, 5.0HP, 208V, 3 Phase, 250 USGPM @ 65ft. HD
P5	FEATURE PUMP W/ STRAINER - KMR SLIDE	1	PENTAIR MAX-E-PRO, 3.0HP, 208V, 3 Phase, 150 USGPM @ 55ft. HD
F1	SPRAY PAD FILTER	4	PENTAIR, HIGH RATE SAND FILTER, MODEL: TR 140, FILTRATION RATE: 14.28 GPM/SQ.FT.
CAT1	SPRAY PAD CHEMICAL CONTROLLER	1	HAYWARD CAT 2000, 110V 15 AMP PLUG
C1	SPRAY PAD CHLORINE CHEMICAL FEED PUMP	1	BLUE-WHITE, FLEXFLOW CHEMICAL FEED PUMP, 110V, 8 GPD CHLORINE, MODEL: A1N 20C-4T
C2	SPRAY PAD ACID CHEMICAL FEED PUMP	1	BLUE-WHITE, FLEXFLOW CHEMICAL FEED PUMP, 110V, 8 GPD ACID, MODEL: A1N 20C-4T
CH1	SPRAY PAD CHLORINE TANK	1	25 GALLONS ACID TANK
PH1	SPRAY PAD ACID TANK	1	25 GALLONS ACID TANK
L1	SPRAY PAD AUTO WATER LEVEL CONTROLLER	1	LEVELOR K1100, 115V/ 1 AMP PLUG
WT1	SPRAY PAD WATER RESERVOIR	1	10' X 12' X 4'-6" HIGH CONCRETE WATER RESERVOIR, CAPACITY: 4,050 US GALLONS

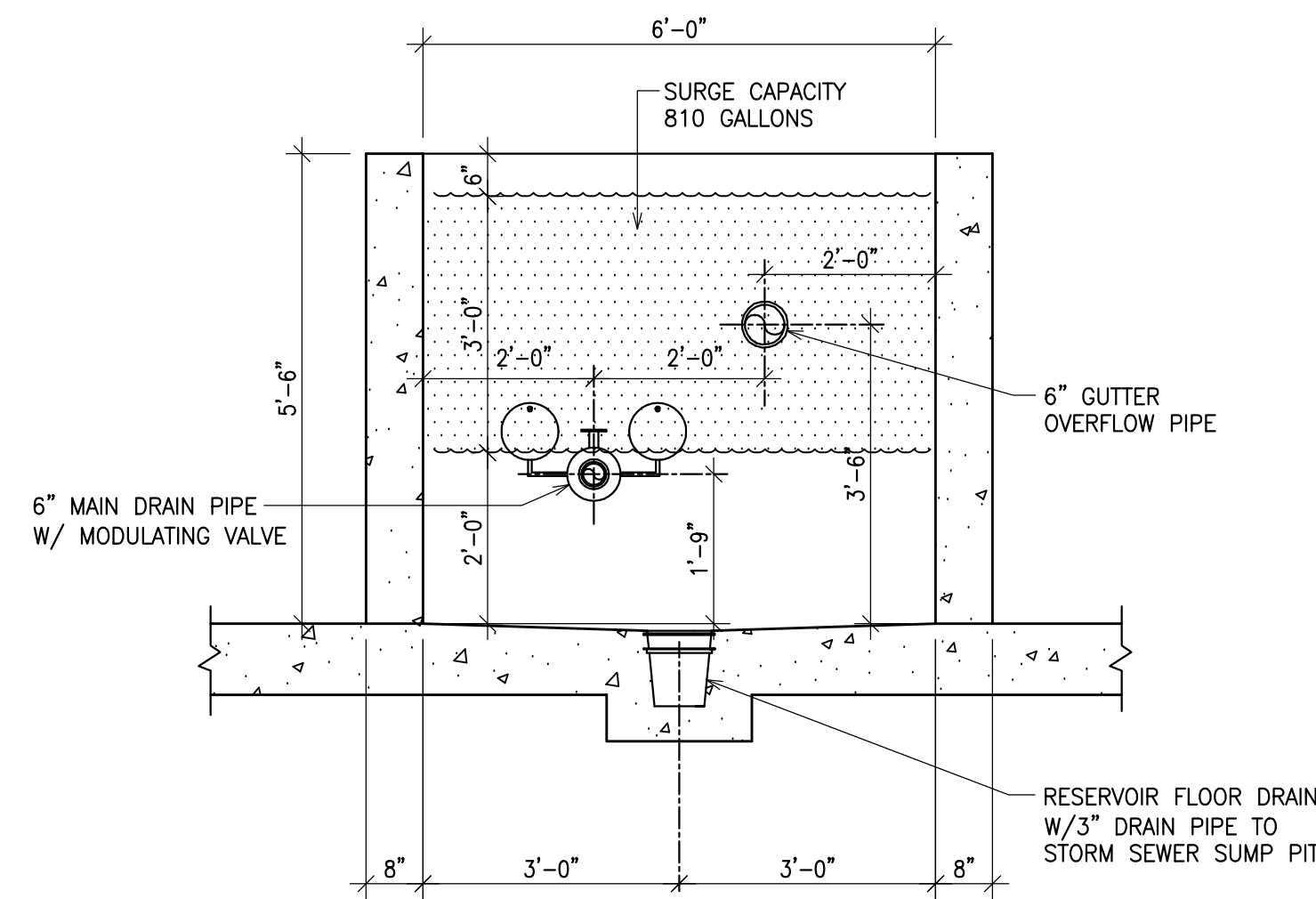
1 SPRAY PAD RESERVOIR CROSS SECTION
SP-2 1/2"=1'-0"

2 SPRAY PAD RESERVOIR LONGITUDINAL SECTION
SP-2 1/2"=1'-0"



DATA	
POOL RESERVOIR	
DIMENSIONS:	6'-0" x 6'-0"
WATER DEPTH:	5'-0"
CAPACITY:	1,350 GALLONS
MINIMUM SURGE CAPACITY:	810 GALLONS

DATA	
POOL	
SHAPE:	RECTANGLE
DIMENSIONS:	21'-6" X 28'-0"
PERIMETER:	99'
WATER SURFACE AREA:	601 Sq.Ft.
BATHER LOAD:	--
WATER VOLUME:	10,500 GAL.
WATER DEPTH:	2'-6"
TURN OVER RATE:	60 MIN @ 175 USGPM
FILTER RATE:	12.42 GPM /SQ.FT.



EQUIPMENT LIST - POOL

ITEM	TYPE	QTY.	DESCRIPTION
P6	POOL CIRC. PUMP W/ STRAINER LOCATION: MECH. ROOM	1	PENTAIR MAX-E-PROFX, 3.0HP, 208V, 3 Phase, 175 USGPM @ 45ft. HD
F2	POOL FILTER	2	PENTAIR, HIGH RATE SAND FILTER, MODEL: TR 140, FILTRATION RATE: 12.42 GPM/SQ.FT.
CAT2	POOL CHEMICAL CONTROLLER	1	HAYWARD CAT 2000, 110V 15 AMP PLUG
C3	POOL CHLORINE CHEMICAL FEED PUMP	1	BLUE-WHITE, FLEXFLOW CHEMICAL FEED PUMP, 110V, 8 GPD CHLORINE, MODEL: A1N 20C-4T
C4	POOL ACID CHEMICAL FEED PUMP	1	BLUE-WHITE, FLEXFLOW CHEMICAL FEED PUMP, 110V, 8 GPD ACID, MODEL: A1N 20C-4T
CH2	POOL CHLORINE TANK	1	25 GALLONS ACID TANK
PH2	POOL ACID TANK	1	25 GALLONS ACID TANK
L2	POOL AUTO WATER LEVEL CONTROLLER	1	LEVELOR K1100, 115V/ 1 AMP PLUG
WT2	POOL WATER RESERVOIR	1	84" X 126", 42" HIGH WATER / SURGE TANK, CAPACITY: 1,325 US GALLONS

3 POOL RESERVOIR SECTION #1
SP-2 1/2"=1'-0"

4 POOL RESERVOIR SECTION #2
SP-2 1/2"=1'-0"

GENERAL NOTES

DRAWINGS AND SPECIFICATIONS AS INSTRUMENTS OF SERVICE ARE THE PROPERTY OF WESTERN RECREATION AND DEVELOPMENT INC. AND SHALL NOT BE USED, REPRODUCED, MODIFIED OR SOLD EITHER WHOLLY OR IN PART, WITHOUT THEIR PERMISSION. PATENT # CA2357509

SOME ITEMS DRAWN OR INDICATED ON THIS PLAN ARE NOT INCLUDED IN THE CONTRACT PRICE.

1.	ISSUED FOR CONSTRUCTION	07.15.16
No.	REVISION	DATE

FIRM NAME AND ADDRESS
Western Recreation & Development Inc.
 191 Eagle Dr
 Winnipeg, Manitoba R2R 1V4
 Tel : 1-204-633-7209
 Fax: 1-204-633-9293
 E-mail: info@waterparks.ca
 www.waterparks.ca

PROJECT NAME AND ADDRESS
**SEVEN OAKS POOL
 RENOVATION AND ADDITION**
 WINNIPEG MANITOBA

DRAWING RESERVOIR SECTIONS & DATA	SHEET SP-2
DATE JULY 14 /2016	CHECKED BY B.D.
SCALE AS SHOWN	DRAWN BY A.C.