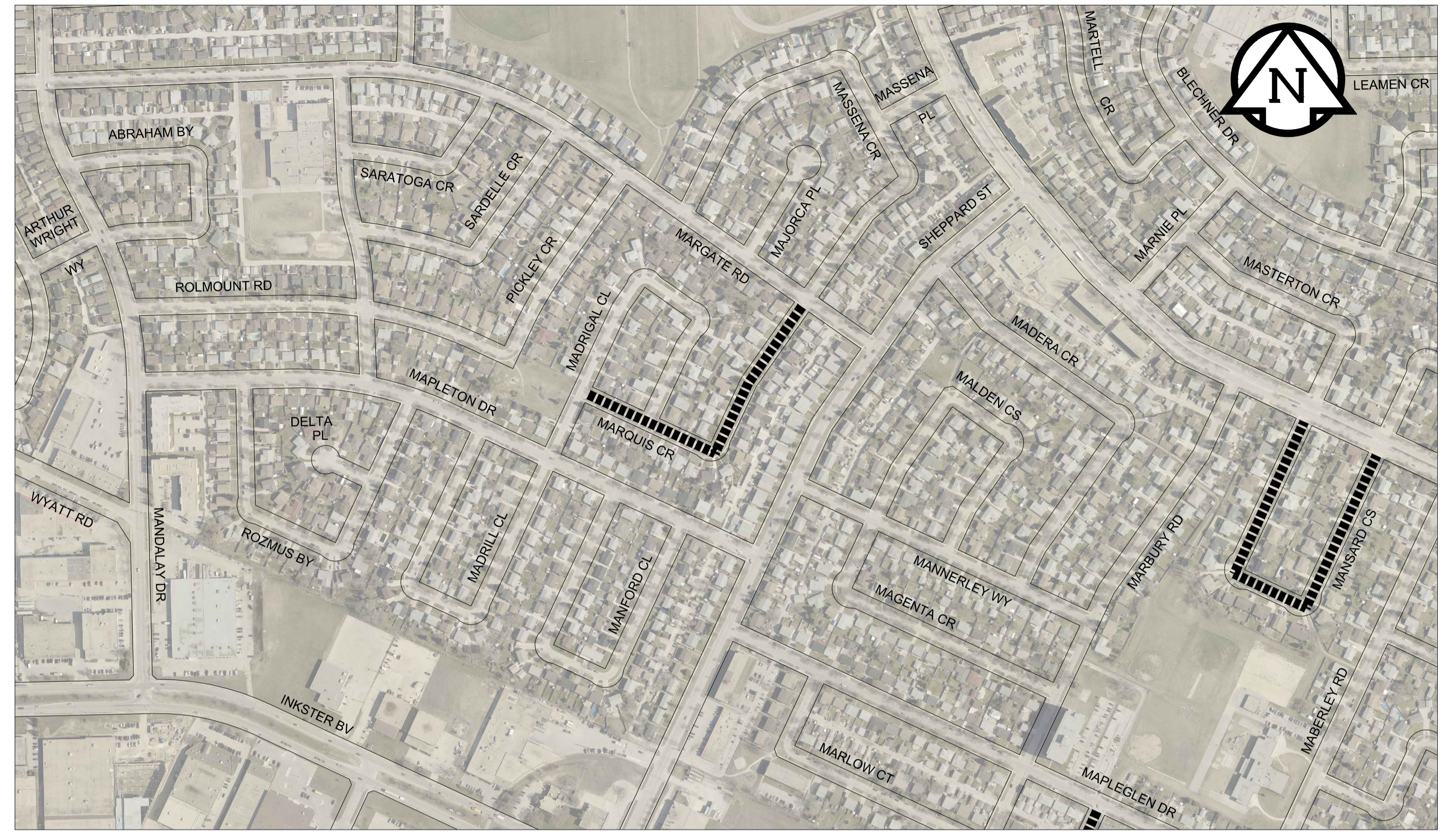
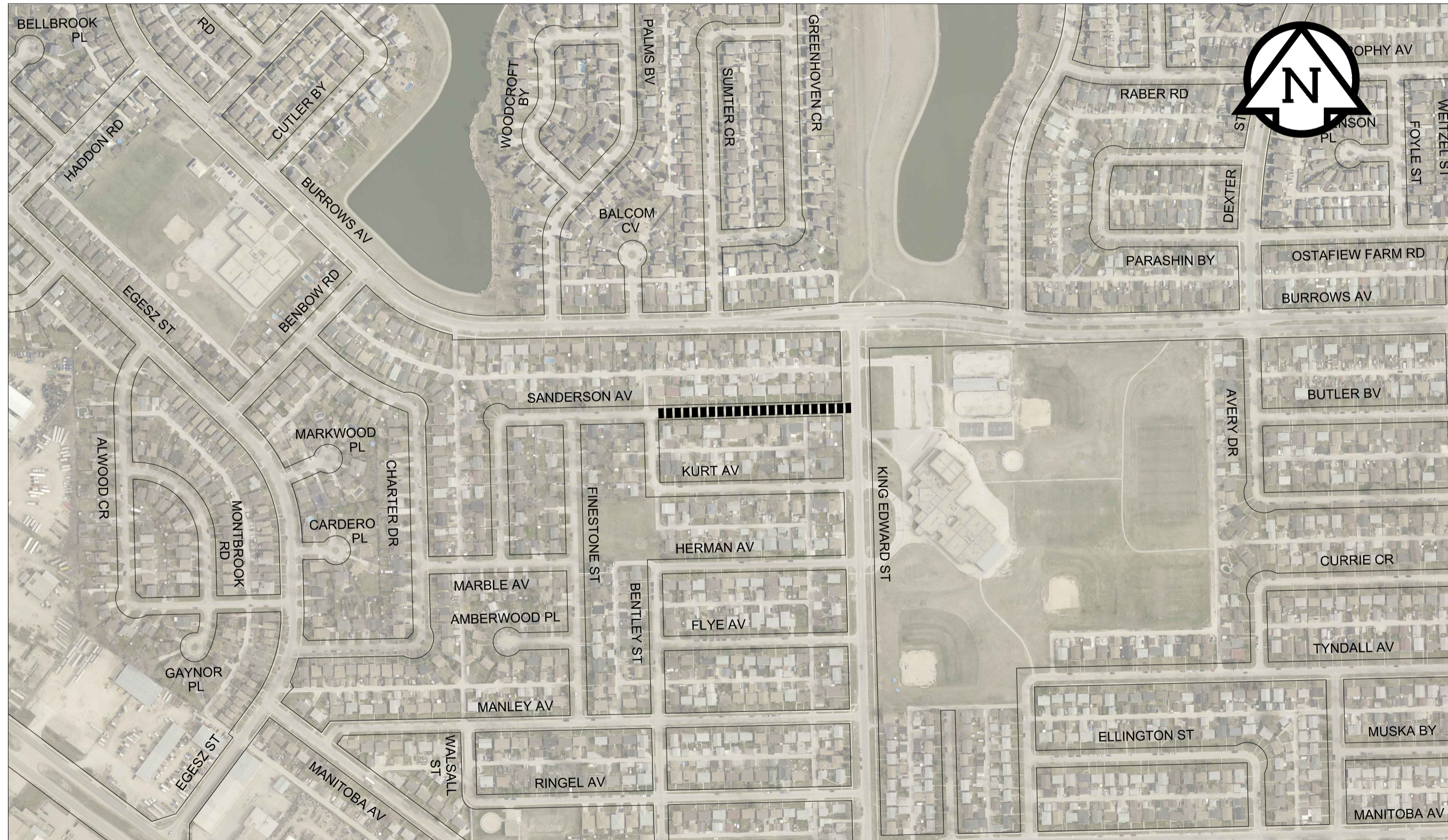


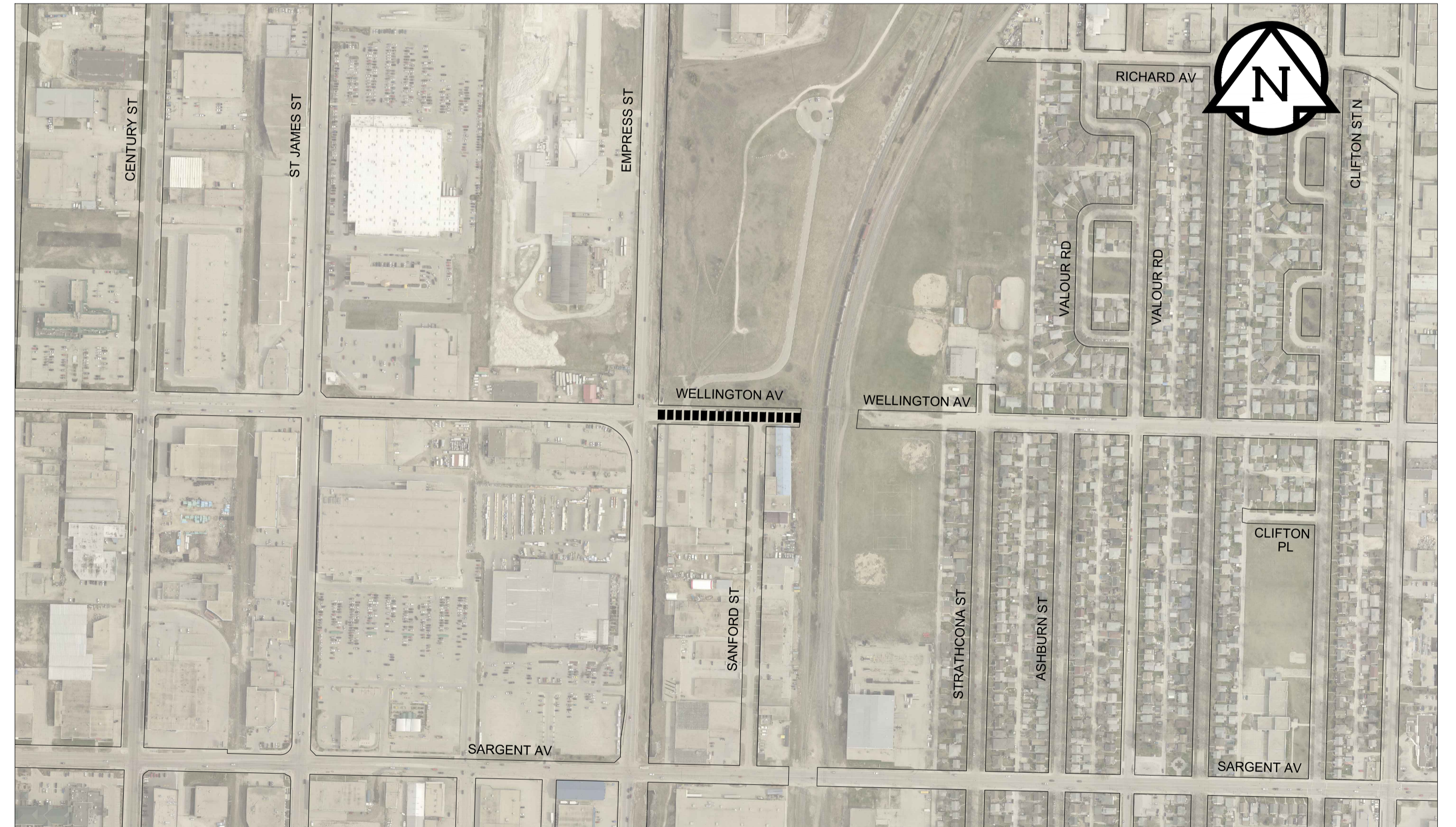
**MANSARD CLOSE - JEFFERSON AV TO JEFFERSON AV**



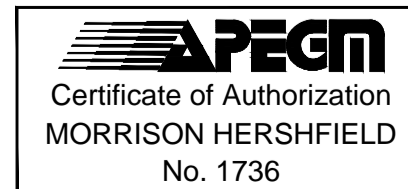
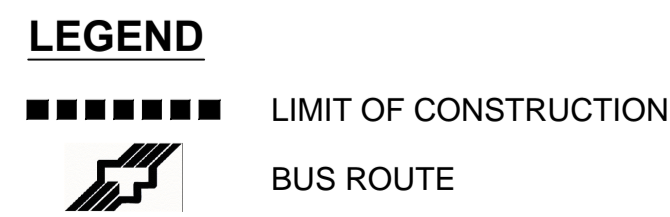
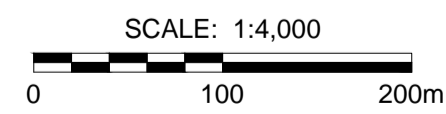
**MARQUIS CRESCENT - MARGATE RD TO MADRIGAL CL**



**SANDERSON AVENUE - KURT AV TO KING EDWARD AV**



**WELLINGTON AVENUE - EAST END TO EMPRESS ST**



**LOCATION APPROVED UNDERGROUND STRUCTURES**

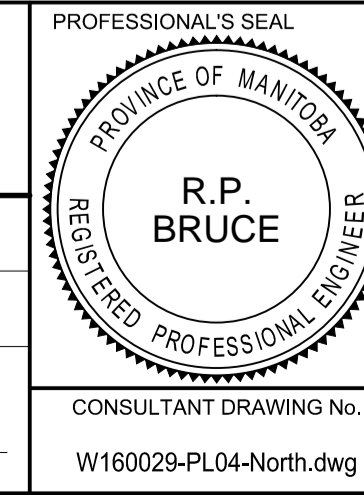
SUPR. U/G STRUCTURES COMMITTEE	DATE

NOTE: LOCATION OF UNDERGROUND STRUCTURES AS SHOWN ARE BASED ON THE BEST INFORMATION AVAILABLE. BUT NO GUARANTEE IS GIVEN THAT ALL EXISTING UTILITIES ARE SHOWN OR THAT THE GIVEN LOCATIONS ARE EXACT. CONFIRMATION OF EXISTENCE AND EXACT LOCATION OF ALL SERVICES MUST BE OBTAINED FROM THE INDIVIDUAL UTILITIES BEFORE PROCEEDING WITH CONSTRUCTION.

ISSUED FOR TENDER	DATE	BY
A	16/07/26	RPB
No. REVISIONS	YYMMDD	BY

**MORRISON HERSHFIELD**

DESIGNED BY	JGK	CHECKED BY	RPB
DRAWN BY	DML	APPROVED BY	BWB
HOR. SCALE	1:4000	RELEASED FOR CONSTRUCTION	
VERT. SCALE	N/A	DATE	16/07/11



BID OPPORTUNITY No. 654-2016

**THE CITY OF WINNIPEG**  
PUBLIC WORKS DEPARTMENT  
ENGINEERING DIVISION

**2016 THIN BITUMINOUS OVERLAY (TBO) PROGRAM, NORTH CONTRACT**

**MANSARD CS, MARQUIS CR, SANDERSON AV & WELLINGTON AV**

CITY DRAWING NUMBER	N/A
SHEET	4 OF 4
DRAWING No.	4
REV	A