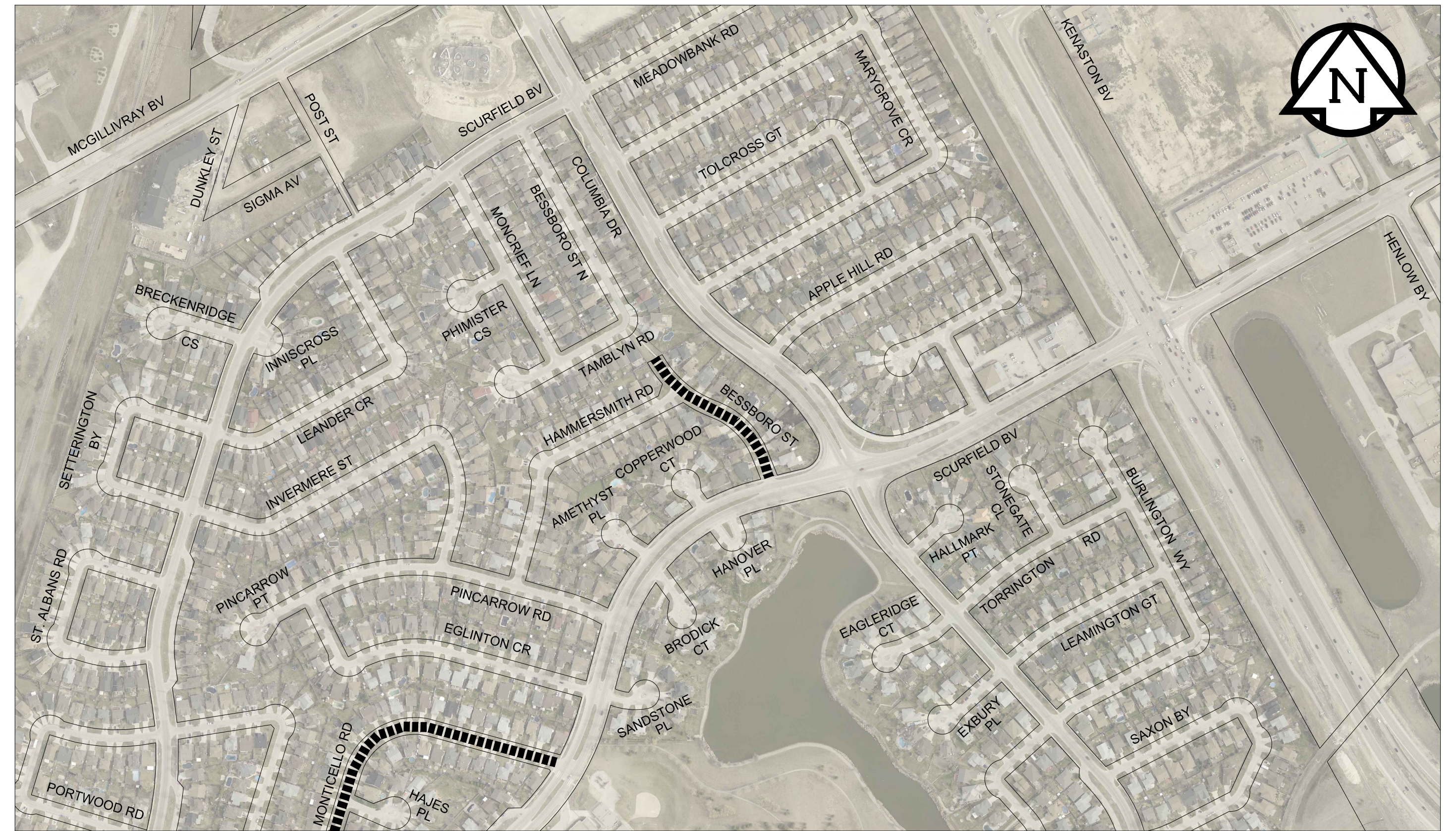
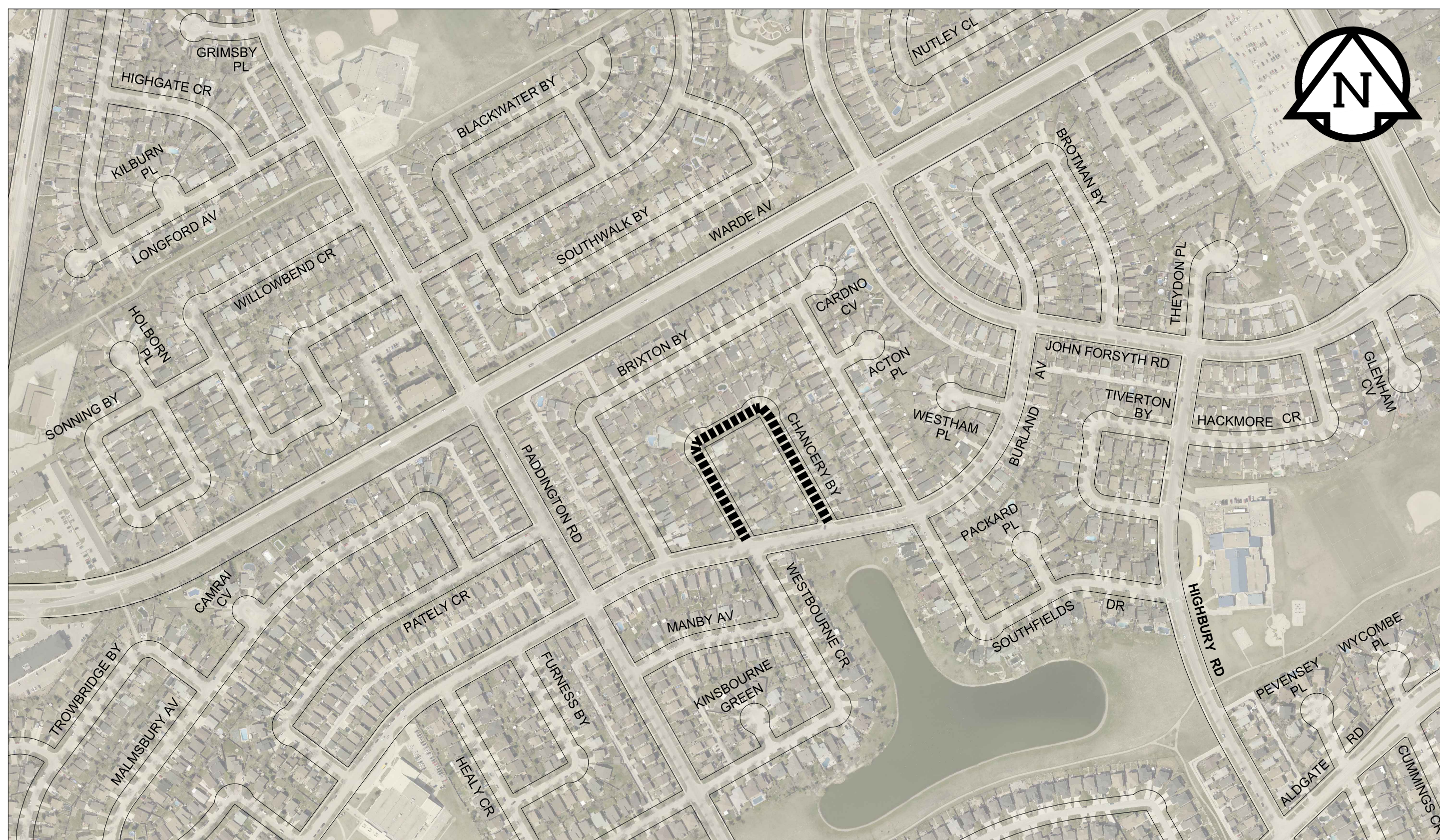


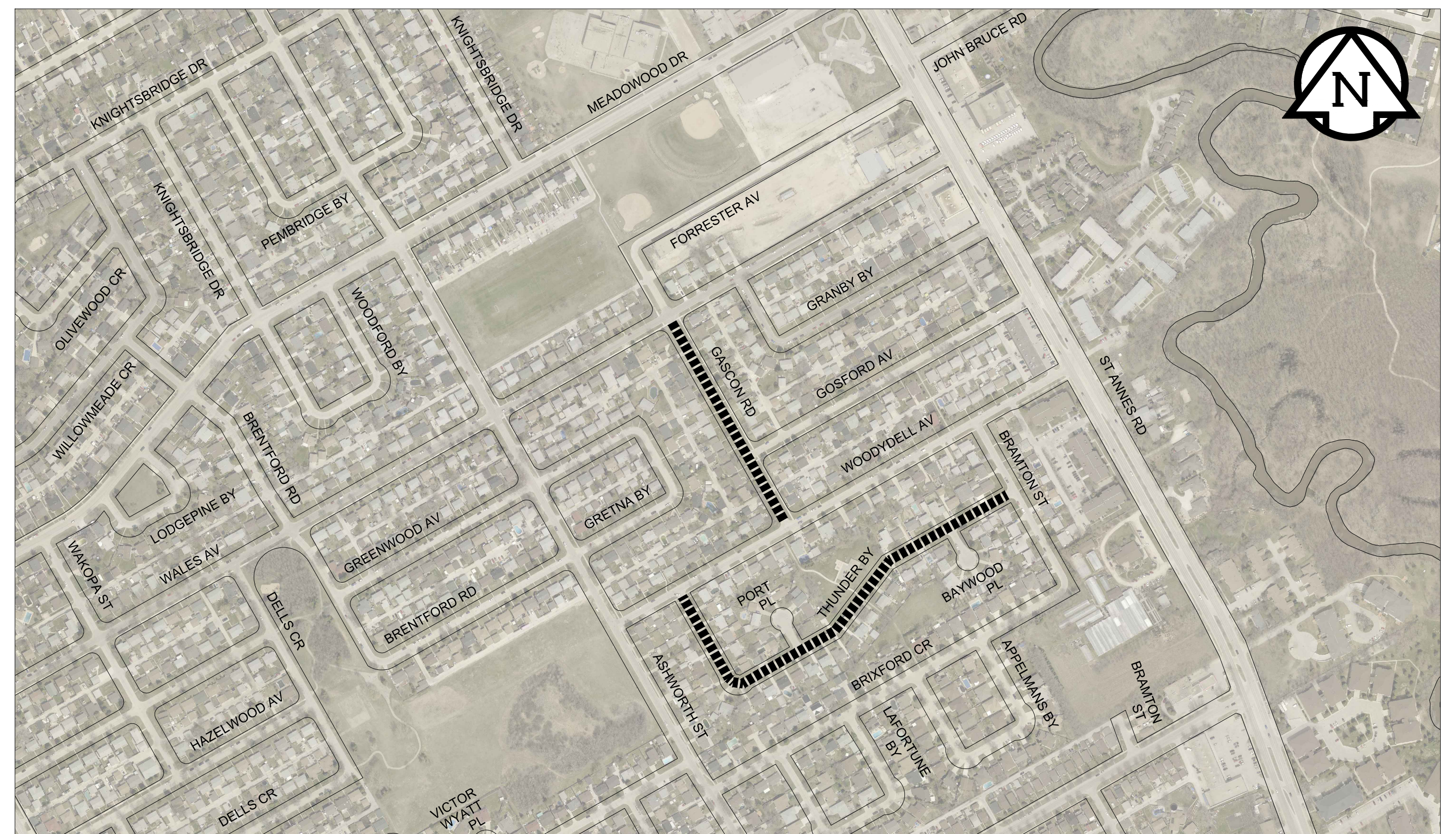
**BELLEMER DRIVE - GRANDMONT BV TO LE MAIRE ST**



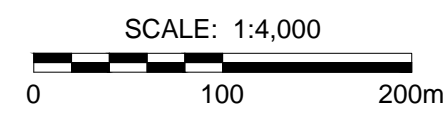
**BESSBORO STREET - NORTH END TO SCURFIELD BV**



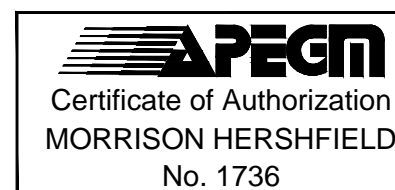
**CHANCERY BAY - BURLAND AV TO BURLAND AV**



**GASCON ROAD - FORRESTER AV TO WOODYDELL AV**



**LEGEND**  
 LIMIT OF CONSTRUCTION  
 BUS ROUTE



**LOCATION APPROVED UNDERGROUND STRUCTURES**

SUPR. U/G STRUCTURES COMMITTEE DATE  
 NOTE:  
 LOCATION OF UNDERGROUND STRUCTURES AS SHOWN ARE BASED ON THE BEST INFORMATION AVAILABLE. BUT NO GUARANTEE IS GIVEN THAT ALL EXISTING UTILITIES ARE SHOWN OR THAT THE GIVEN LOCATIONS ARE EXACT. CONFIRMATION OF EXISTENCE AND EXACT LOCATION OF ALL SERVICES MUST BE OBTAINED FROM THE INDIVIDUAL UTILITIES BEFORE PROCEEDING WITH CONSTRUCTION.

NO.	ISSUED FOR TENDER	DATE	BY
A	ISSUED FOR TENDER	16/07/26	RPB
No.	REVISIONS	YYMMDD	BY

DESIGNED BY	JGK
CHECKED BY	RPB
DRAWN BY	DML
APPROVED BY	BWB
HOR. SCALE	1:4000
VERT. SCALE	N/A
DATE	16/07/11

PROFESSIONAL'S SEAL  
 PROVINCE OF MANITOBA  
  
 REGISTERED PROFESSIONAL ENGINEER  
 CONSULTANT DRAWING No.  
 W160029-PL01-South.dwg

BID OPPORTUNITY No. 655-2016  
  
**THE CITY OF WINNIPEG**  
 PUBLIC WORKS DEPARTMENT  
 ENGINEERING DIVISION  
**2016 THIN BITUMINOUS OVERLAY (TBO) PROGRAM, SOUTH CONTRACT**  
**BELLEMER DR, BESSBORO ST, CHANCERY BY & GASCON RD**  
 CITY DRAWING NUMBER N/A  
 SHEET 1 OF 4  
 DRAWING No. 1 REV A

**METRIC**  
 WHOLE NUMBERS INDICATE MILLIMETRES  
 DECIMALIZED NUMBERS INDICATE METRES