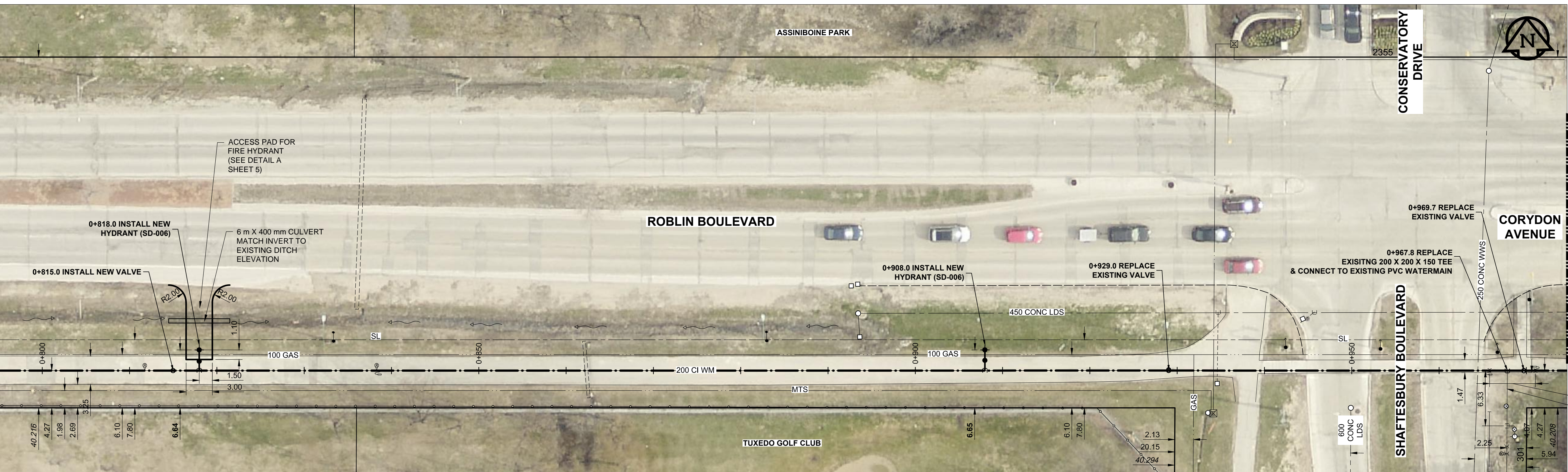
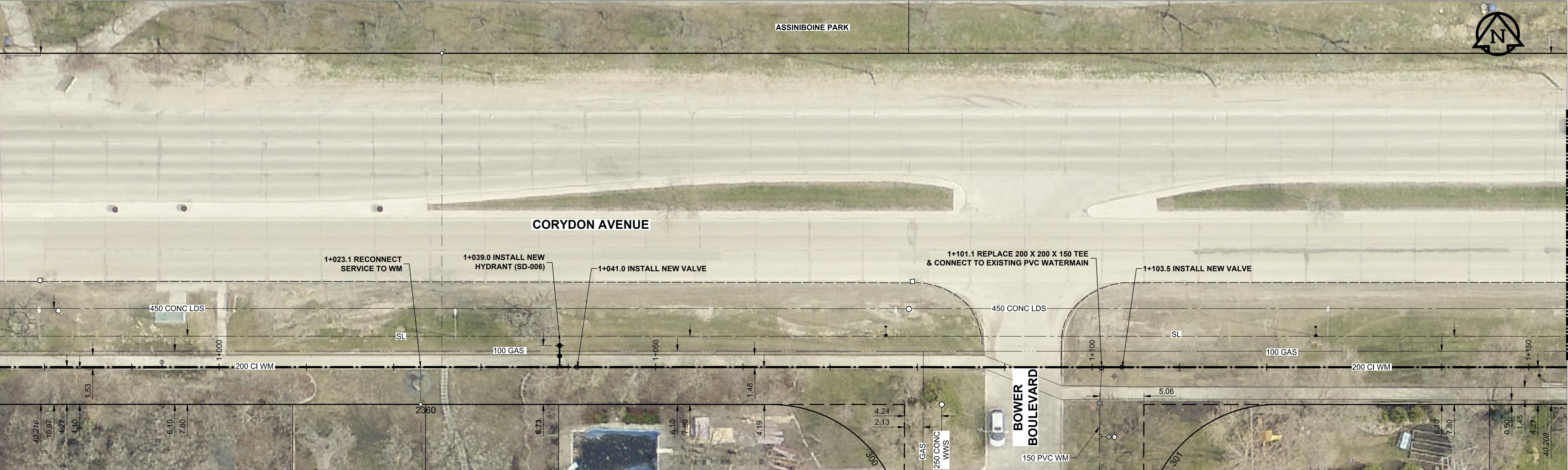


MATCHLINE AT STA 0+795 REFER TO SHEET 3



MATCHLINE AT STA 0+675 REFER TO SHEET 4

MATCHLINE AT STA 0+675 REFER TO SHEET 4



MATCHLINE AT STA 1+154 REFER TO SHEET 5

AECOM
 Certificate of Authorization
 AECOM Canada Ltd.
 No. 4671 Date: 2016/7/14

METRIC
 WHOLE NUMBERS INDICATE MILLIMETRES
 DECIMALIZED NUMBERS INDICATE METRES

1:250

ALL VALVES ARE CLOCKWISE TO CLOSE (BLACK OPERATING NUT)

LOCATION APPROVED
 UNDERGROUND STRUCTURES

SUPR. U/G STRUCTURES	DATE

LOCATION OF UNDERGROUND STRUCTURES AS SHOWN ARE BASED ON THE BEST INFORMATION AVAILABLE. BUT NO GUARANTEE IS GIVEN THAT ALL EXISTING UTILITIES ARE SHOWN OR THAT THE GIVEN LOCATIONS ARE EXACT. CONFIRMATION OF EXISTENCE AND EXACT LOCATION OF ALL SERVICES MUST BE OBTAINED FROM THE INDIVIDUAL UTILITIES BEFORE PROCEEDING WITH CONSTRUCTION.

BENCHMARK: 652233 234.327 CORYDON AVE AND SHAFESBURY BLVD, IN MEDIAN, TBLT. IN 7.5 m CONC PILE, BENEATH VALVE BOX IN LEFT TURN LANE 4.2 m S OF CL OF W BOUND TRAFFIC LANE OF CORYDON AVE AND 10.4 m E OF CL OF PAVT OF SHAFESBURY BLVD

NO.	ISSUED FOR TENDER	16/07/14	SE
NO.	REVISIONS	YY/MM/DD	BY

AECOM

DESIGNED BY	GSK	CHECKED BY	<i>[Signature]</i>
DRAWN BY	SE	APPROVED BY	<i>[Signature]</i>
HOR. SCALE	1:250	RELEASED FOR CONSTRUCTION	
VERT. SCALE	N/A	DATE	

PROFESSIONAL'S SEAL
PROVINCE OF MANITOBA
 14 July 2016
C. C. MACEY
 REGISTERED ENGINEER
 CONSULTANT DRAWING NO.
 C-0004

THE CITY OF WINNIPEG
 WATER AND WASTE DEPARTMENT
 ENGINEERING DIVISION

WATERMAIN REHABILITATION
 ROBLIN BOULEVARD / CORYDON AVENUE
 1134.7m WEST OF SHAFESBURY BLVD TO 44m EAST OF BOWER BLVD

SHEET	5	OF	6
CITY DRAWING NUMBER	D-14387		
REV	0		