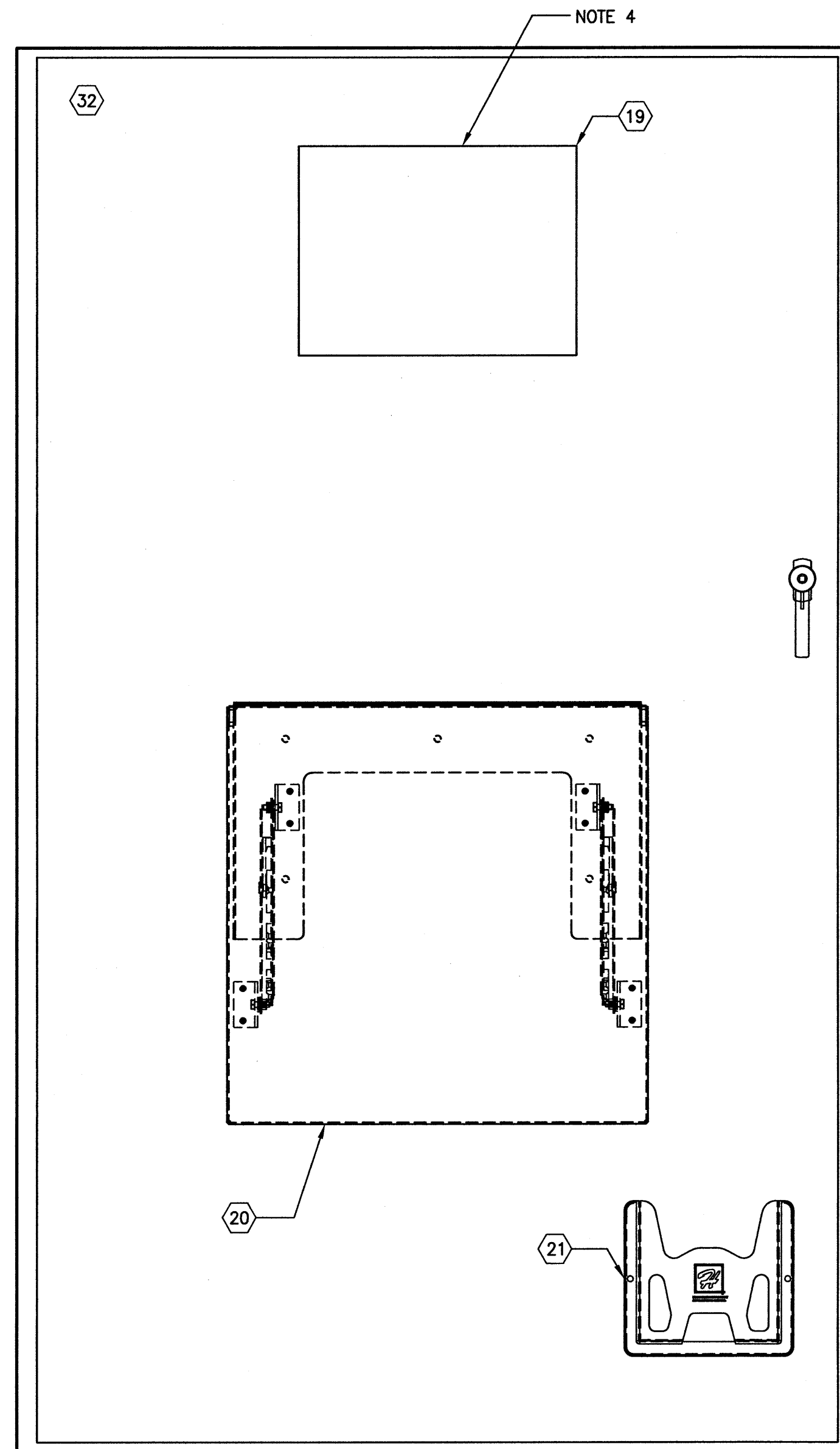
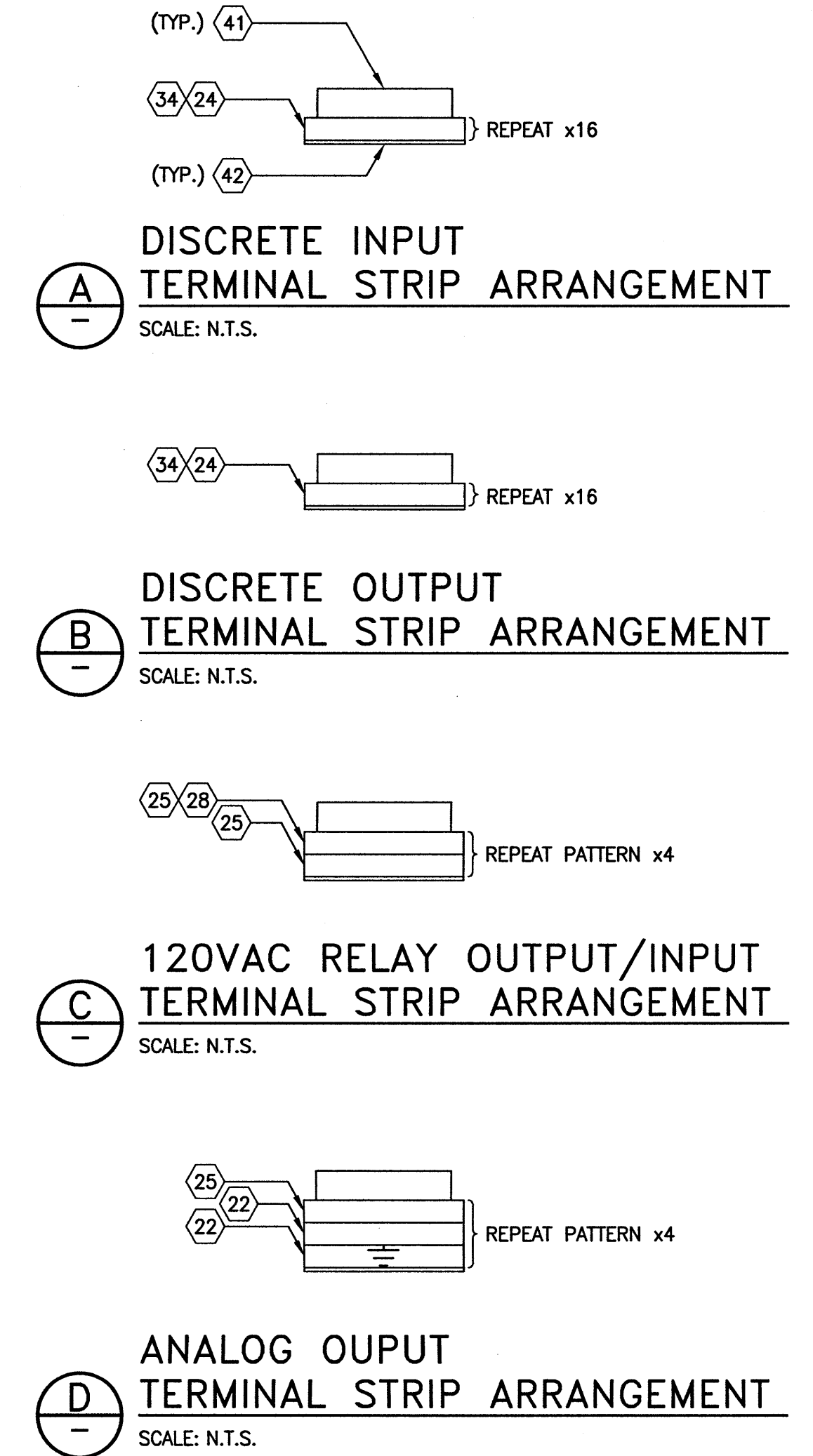


1
ENCLOSURE INTERNAL VIEW
AND DEVICE ARRANGEMENT
SCALE: 1:5mm (A1)



2
ENCLOSURE EXTERNAL VIEW
SCALE: 1:5mm (A1)

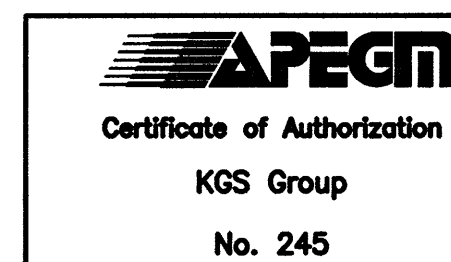


NOTES:

1. PROVIDE MOUNTING RAIL TO MAXIMUM AVAILABLE LENGTH.
2. FLUORESCENT FIXTURES CONTROLLED FROM DOOR ACTIVATED LIMIT SWITCH.
3. REFER TO DRAWING 1-0103-ACBD-Z002 FOR BILL OF MATERIALS.
4. POSITION OF MAGELIS HMI. DIMENSIONED FOR CUT OUT SIZE.
5. REFER TO DRAWING 1-0103-ACBD-Z003.
6. PROVIDE LAMACOID LABEL ABOVE RECEPTACLE STATING "EFFLUENT FLOW SIGNAL, 24VDC SOURCED WITHIN CP-Z800 PLC PANEL, 4-20mA SIGNAL REPRESENTS 0 TO 2000 L/S, WHITE WIRE = POSITIVE, BLACK WIRE = NEGATIVE, GREEN WIRE = GROUNDED SHIELD."

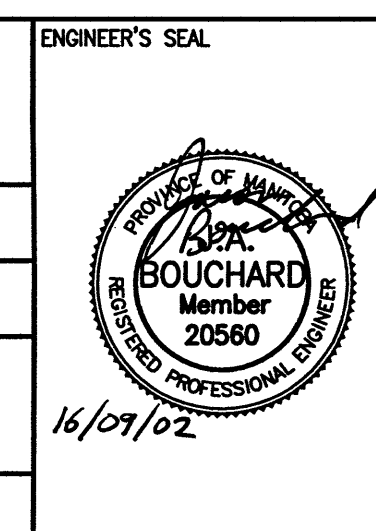
LEGEND

◻ ITEM NUMBER
REFER TO DWG 1-0103-ACBD-Z002



B.M.	-
ELEV.	-
00	ISSUED FOR CONSTRUCTION
NO.	REVISIONS
DATE	DESIGN CHECK

DESIGNED BY: C. S. ROBINSON	CHECKED BY: J.A. BOUCHARD
DRAWN BY: S. GUSE	APPROVED BY: J.A. BOUCHARD
SCALE: AS NOTED	ISSUED FOR CONSTRUCTION
DATE: 2016/06/01	BY: DATE:
CONSULTANT NO.: 15-0107-019_E20	



WEST END SEWAGE TREATMENT PLANT EFFLUENT MONITORING STATION CABINET LAYOUT CP-Z800 PLC PANEL		
CITY DRAWING NUMBER 1-0103-ACBD-Z001	SHEET 00	REV. SIZE A1