

# **APPENDIX 'A'**

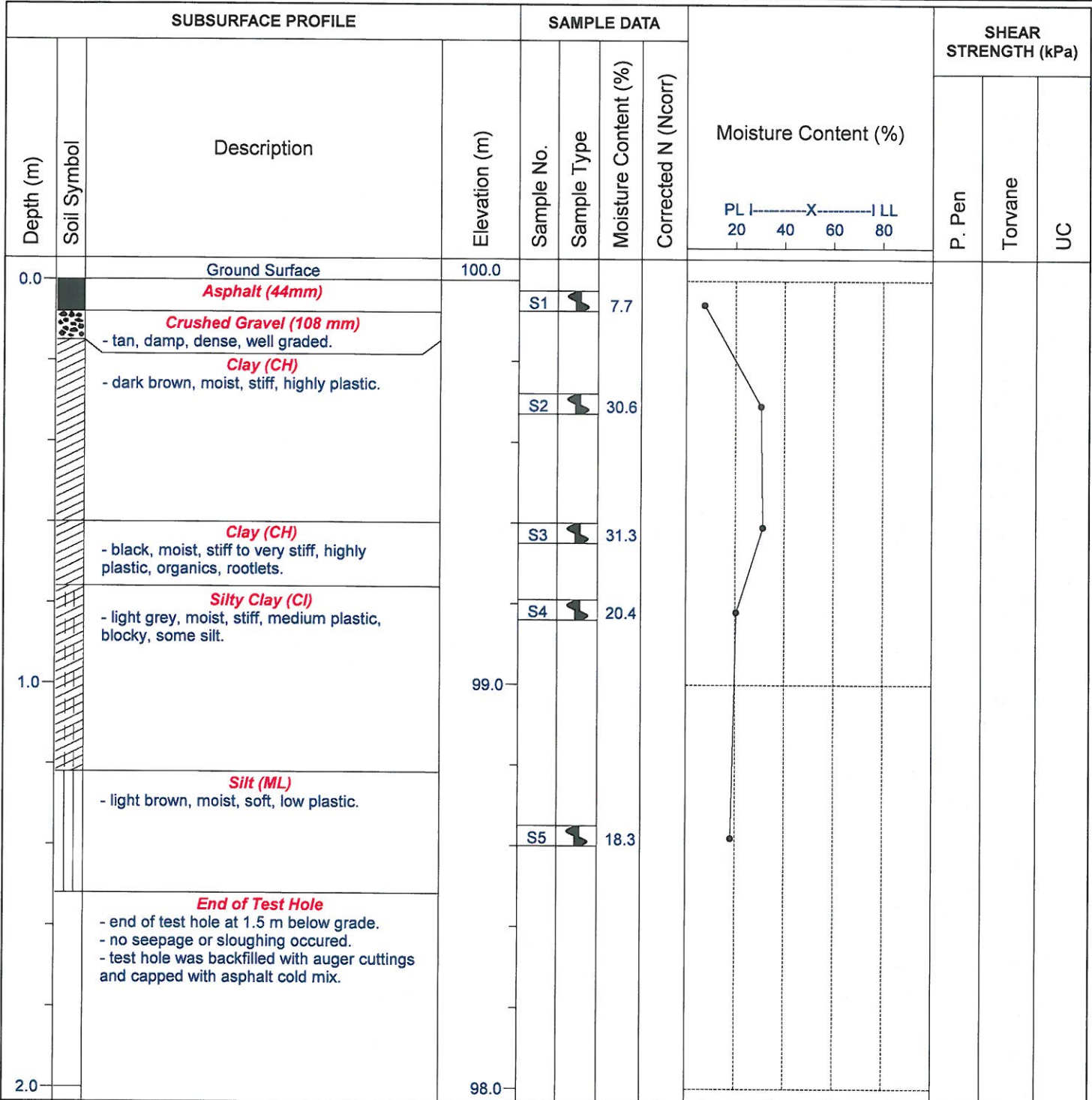
## **GEOTECHNICAL REPORT**



Engineering And Testing  
Solutions That Work For You

**Test Hole #: TH2**  
**Client:** City of Winnipeg  
**Site:** Thelma J Call Park  
**Location:** See Figure 1  
**Project:** Soils Investment - Four Tennis Courts, Winnipeg, MB

**File No.:** 16-217-02  
**Date Drilled:** May 25, 2016  
**Grade Elevation:** 100.0 m (local)  
**Water Elevation:** - -



ENG-TECH Consulting Limited

Logged by: ERM

Reviewed by:

Drilled By: ENG-TECH Consulting Limited

Drill Rig: Hand Auger

Auger Size: 50 mm diameter

Completion Depth: 1.5 m

Completion Elevation: 98.5 m

Sheet: 1 of 1

SAMPLE TYPE



SPLIT BARREL



SHELBY TUBE



AUGER CUTTINGS



SPLIT SPOON



Engineering And Testing  
Solutions That Work For You

**Test Hole #: TH4**

**Client:** City of Winnipeg

**Site:** Linden Woods Community Centre

**Location:** See Figure 1

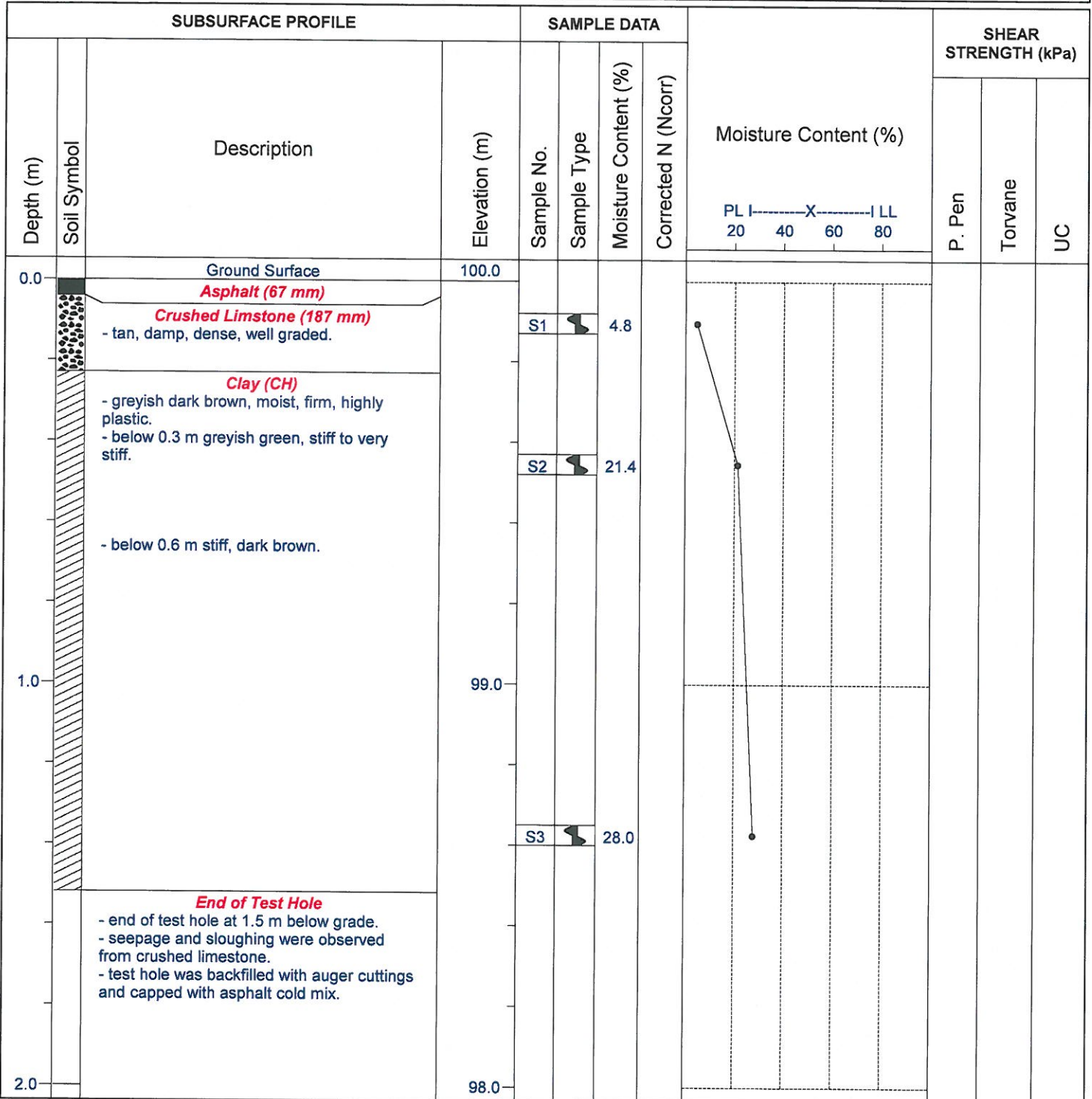
**Project:** Soils Investment - Four Tennis Courts, Winnipeg, MB

**File No.:** 16-217-02

**Date Drilled:** May 25, 2016

**Grade Elevation:** 100.0 m (local)

**Water Elevation:** 99.8 m



ENG-TECH Consulting Limited

Logged by: ERM

Reviewed by: *GA*

Drilled By: ENG-TECH Consulting Limited

Drill Rig: Hand Auger

Auger Size: 50 mm diameter

Completion Depth: 1.5 m

Completion Elevation: 98.5 m

Sheet: 1 of 1

SAMPLE TYPE



SPLIT BARREL



SHELBY TUBE



AUGER CUTTINGS



SPLIT SPOON