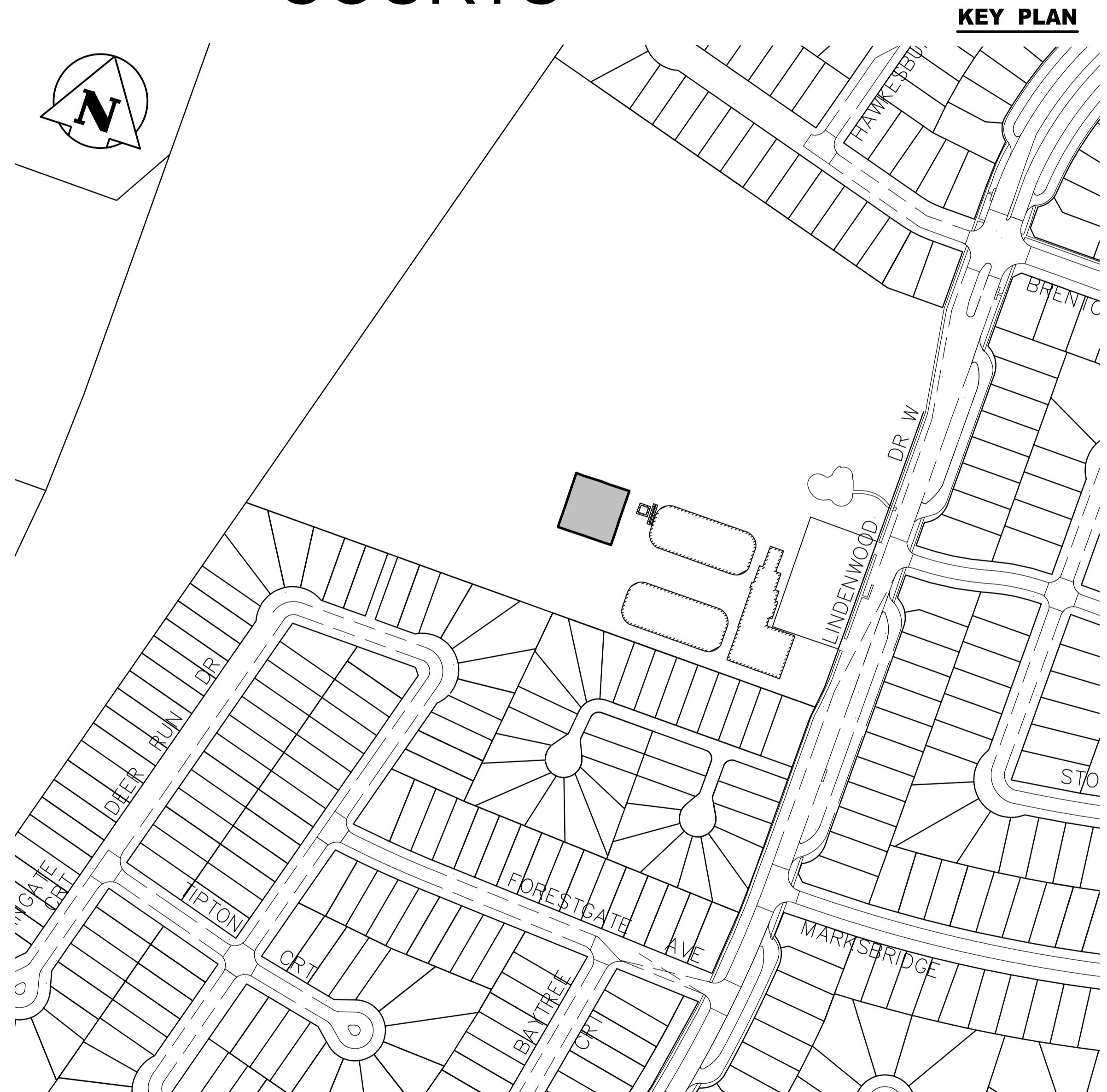




CITY OF WINNIPEG

2016 PARKS CAPITAL PROGRAM

RECONSTRUCTION OF THELMA CALL TENNIS COURTS AND OVERLAY OF LINDEN WOODS COMMUNITY CENTER TENNIS COURTS



KEY PLAN



KEY PLAN

DRAWING INDEX

- T.7-B COVER SHEET AND LOCATION PLAN
- T.7-C THELMA J. CALL PARK - HORIZONTAL GEOMETRY & GRADING PLAN
- L.26-E LINDEN WOODS TENNIS COURTS - HORIZONTAL GEOMETRY & GRADING PLAN
- T.7-D PAVEMENT CROSS SECTION PLAN
- T.7-E DETAIL PLAN

RELEASED FOR
CONSTRUCTION BY:

PHILIP D'AUTEUIL, C.E.T.

DATE

SEPTEMBER 21, 2016

THE CITY OF WINNIPEG PLANNING, PROPERTY & DEVELOPMENT DEPARTMENT	
2016 PREP CAPITAL PROGRAM	BID OPPORTUNITY NUMBER 688-2016
COVER SHEET & LOCATION PLAN	SHEET 1 OF 5 CITY DRAWING NUMBER T.7-B

V:\Design\Branch\Projects\2016_10_Linden_Wood_&_Thelma_J_Call_Tennis_Courts\0300_drawing\sheet_files\LINTEG-101-2016.dwg