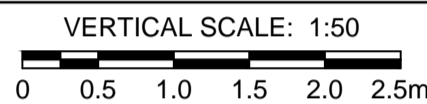
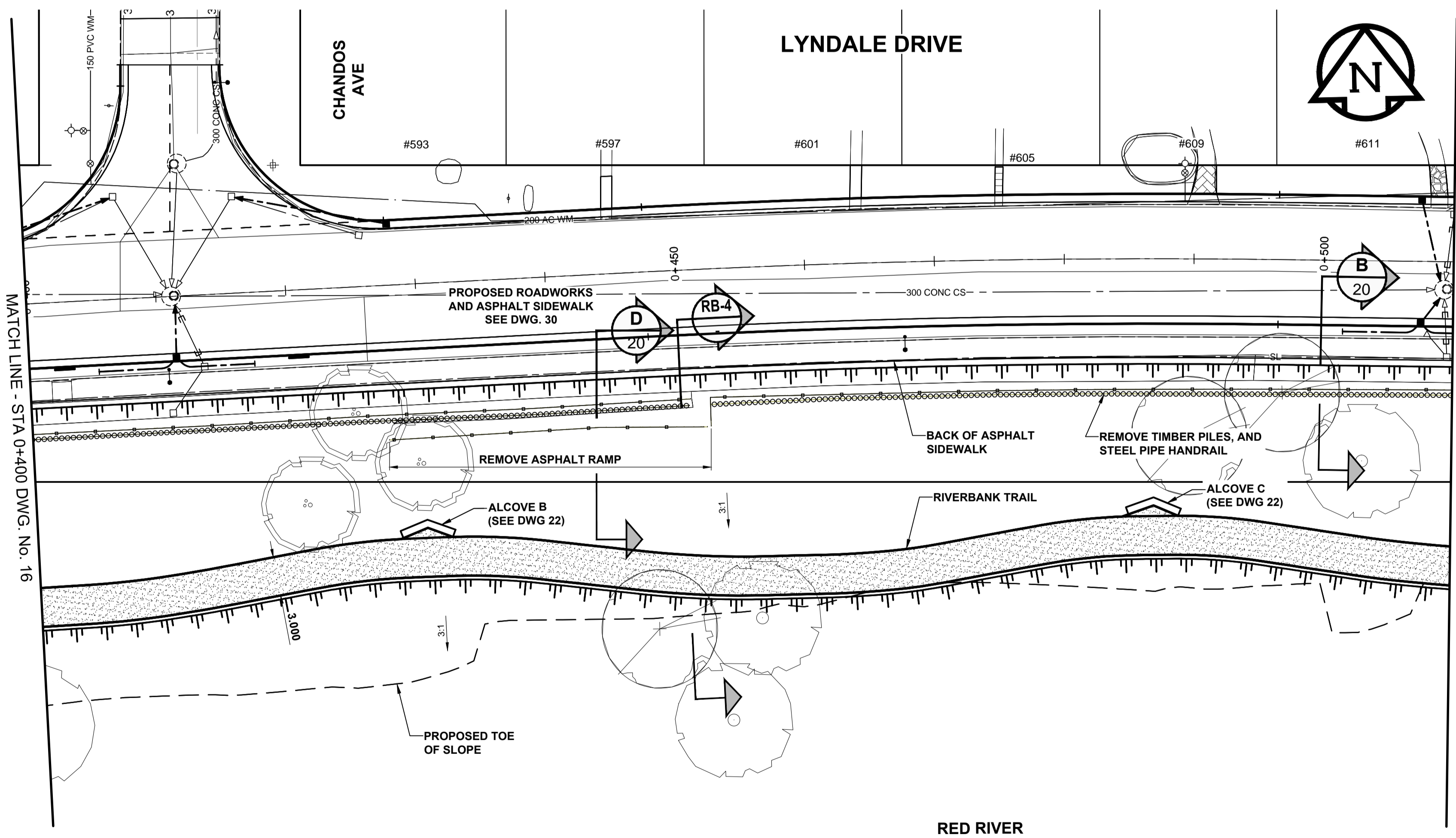


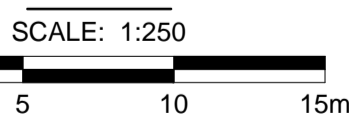
RIVERBANK TRAIL PROFILE



CHAINAGE ALONG PROPOSED PAVEMENT

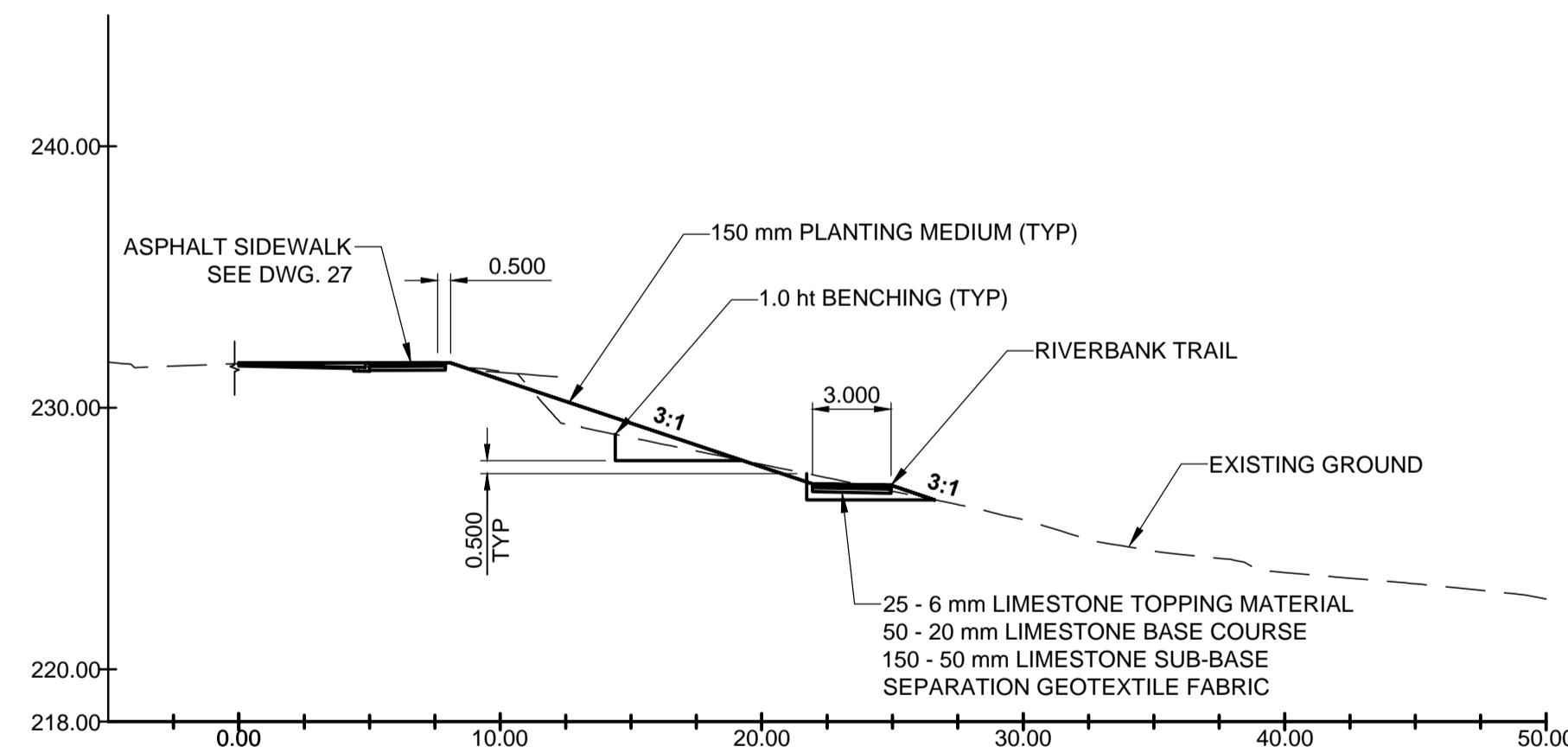


PLAN



PLANT SPECIFICATION LIST

Symbol	Quantity	Botanical / Common Name	Size / Remarks
Deciduous Trees			
	11	<i>Acer negundo</i> / Manitoba Maple	60mm cal., 3.7 to 4.0m ht., 11 major branches in well formed head 2.0m above grade, B&B or tree mover, wire basket. Double stake.
	9	<i>Ulmus Americana</i> / American Elm	60mm cal., 3.7 to 4.0m ht., 11 major branches in well formed head 2.0m above grade, B&B or tree mover, wire basket. Double stake.
	8	<i>Tilia americana</i> / Basswood	Multi-stem, 3.7 to 4.0m ht., 11 major branches in well formed head 2.0m above grade, B&B or tree mover, wire basket. Double stake.
	11	<i>Populus deltoides</i> / Cottonwood (male - seedless)	60mm cal., 3.7 to 4.0m ht., 11 major branches in well formed head 2.0m above grade, B&B or tree mover, wire basket. Double stake.
	8	<i>Salix amygdaloides</i> 'Andersson' / Peachleaf Willow	Multi-stem, 3.7 to 4.0m ht., 11 major branches in well formed head 2.0m above grade, B&B or tree mover, wire basket. Double stake.



RB-4 RIVERBANK TRAIL SECTION

GRAVEL STRUCTURE
STATION 0+450.000
SCALE: HOR 1:250 VER 1:250

METRIC
WHOLE NUMBERS INDICATE MILLIMETRES
DECIMALIZED NUMBERS INDICATE METRES

	GAS		MANHOLE		CONCRETE PAVEMENT
	MTS HANDWELL/PEDESTAL		CATCH BASIN/CATCH PIT		CONC SIDEWALK/MEDIAN
	HYDRO HANDWELL/CABINET		CURB INLET WITH BOX		ASPHALT PAVEMENT
	CATV/FIBRE OPTIC		TREE		PAVING STONE
	TRAFFIC SIGNALS/PIT		TEST HOLE		GRAVEL
	LAND DRAINAGE SEWER		PROPERTY LINE		RAMP CURB
	SANITARY/COMBINED SEWER		SURVEY BAR		PLANING/REMOVAL
	CB LEAD/SSP/DCP		FENCE		
	WATERMAIN		BOC/EDGE OF PAVEMENT		
	SUBDRAIN		ELEVATION (33.333)		
	DITCH		TRAFFIC SIGN		
	EXISTING		LEGEND - PLAN		EXISTING
	NEW		LEGEND - PLAN		NEW

LOCATION APPROVED
UNDERGROUND STRUCTURES

DATE: _____

NOTE:
LOCATION OF UNDERGROUND STRUCTURES AS SHOWN ARE BASED ON THE BEST INFORMATION AVAILABLE BUT NO GUARANTEE IS GIVEN THAT ALL EXISTING UTILITIES ARE SHOWN OR THAT THE GIVEN LOCATIONS ARE EXACT. CONFIRMATION OF EXISTENCE AND EXACT LOCATION OF ALL SERVICES MUST BE OBTAINED FROM THE INDIVIDUAL UTILITIES BEFORE PROCEEDING WITH CONSTRUCTION.

BM 34-004	ELEV 229.873m
C	ISSUED FOR TENDER 16/09/29 JGK
B	ISSUED FOR FINAL REVIEW 16/09/13 JGK
A	ISSUED FOR 75% REVIEW 16/08/17 JGK
No.	REVISIONS YY/MM/DD BY DATE

MORRISON HERSHFIELD	
DESIGNED BY: JGK	CHECKED BY: MVH
DRAWN BY: DID	APPROVED BY: BWB
BY: _____	DATE: 16/09/06

PROFESSIONAL'S SEAL
PROVINCE OF MANITOBA
J.G. KENNEDY
Member
22326
REGISTERED PROFESSIONAL ENGINEER

CONSULTANT FILE NAME
5160047-Lyndale-PP-17.dwg

THE CITY OF WINNIPEG
PUBLIC WORKS DEPARTMENT
ENGINEERING DIVISION

LYNDALE DRIVE RIVERBANK STABILIZATION AND ASSOCIATED WORKS
MONCK AVENUE TO GAUVIN STREET
RIVERBANK GRADING AND TRAIL
STA 0+400 TO STA 0+510

CITY DRAWING NUMBER: RW751-2016-17
SHEET 17 OF 32
DRAWING No. 17 REV C

BID OPPORTUNITY No. 721-2016